
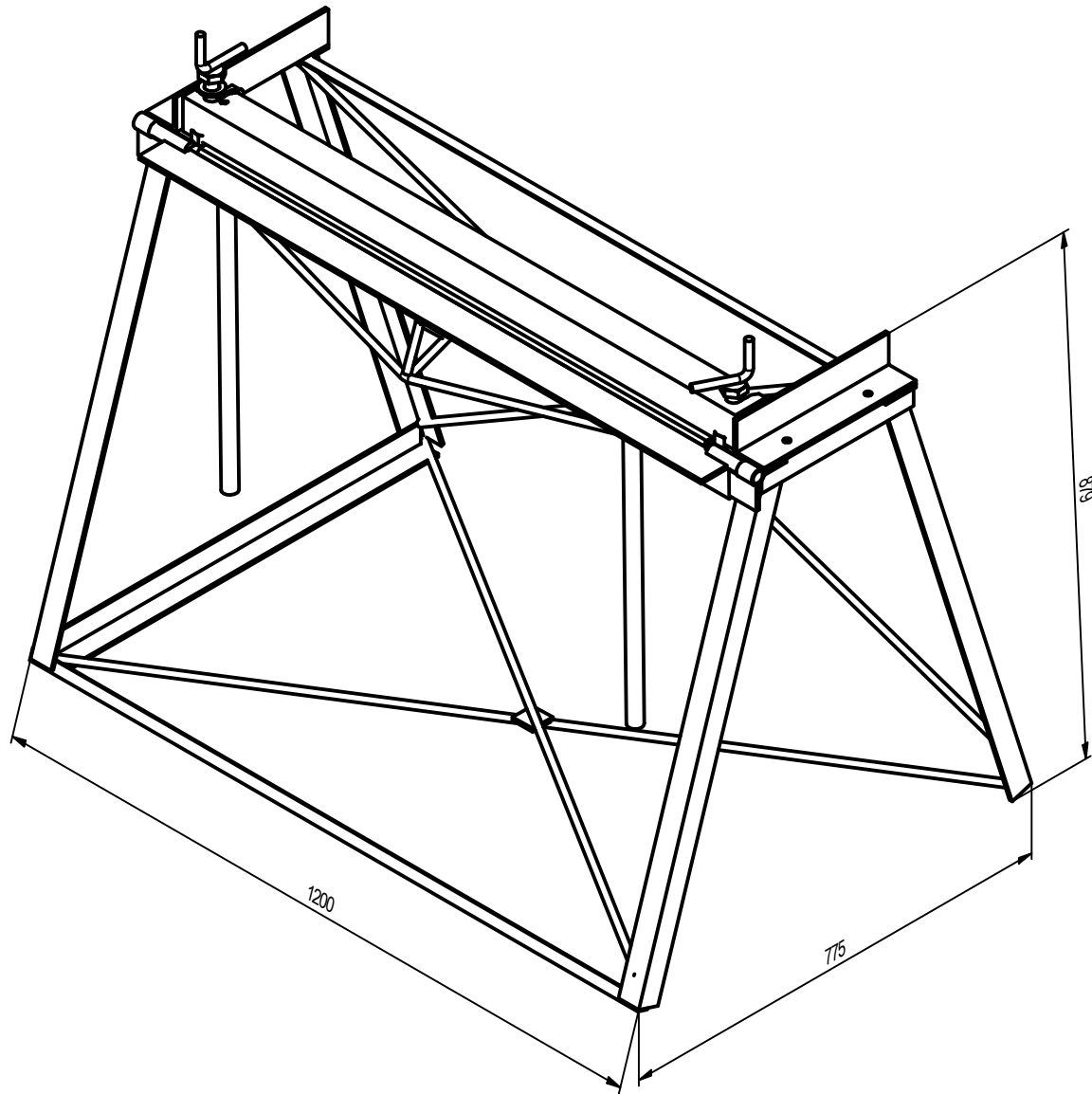

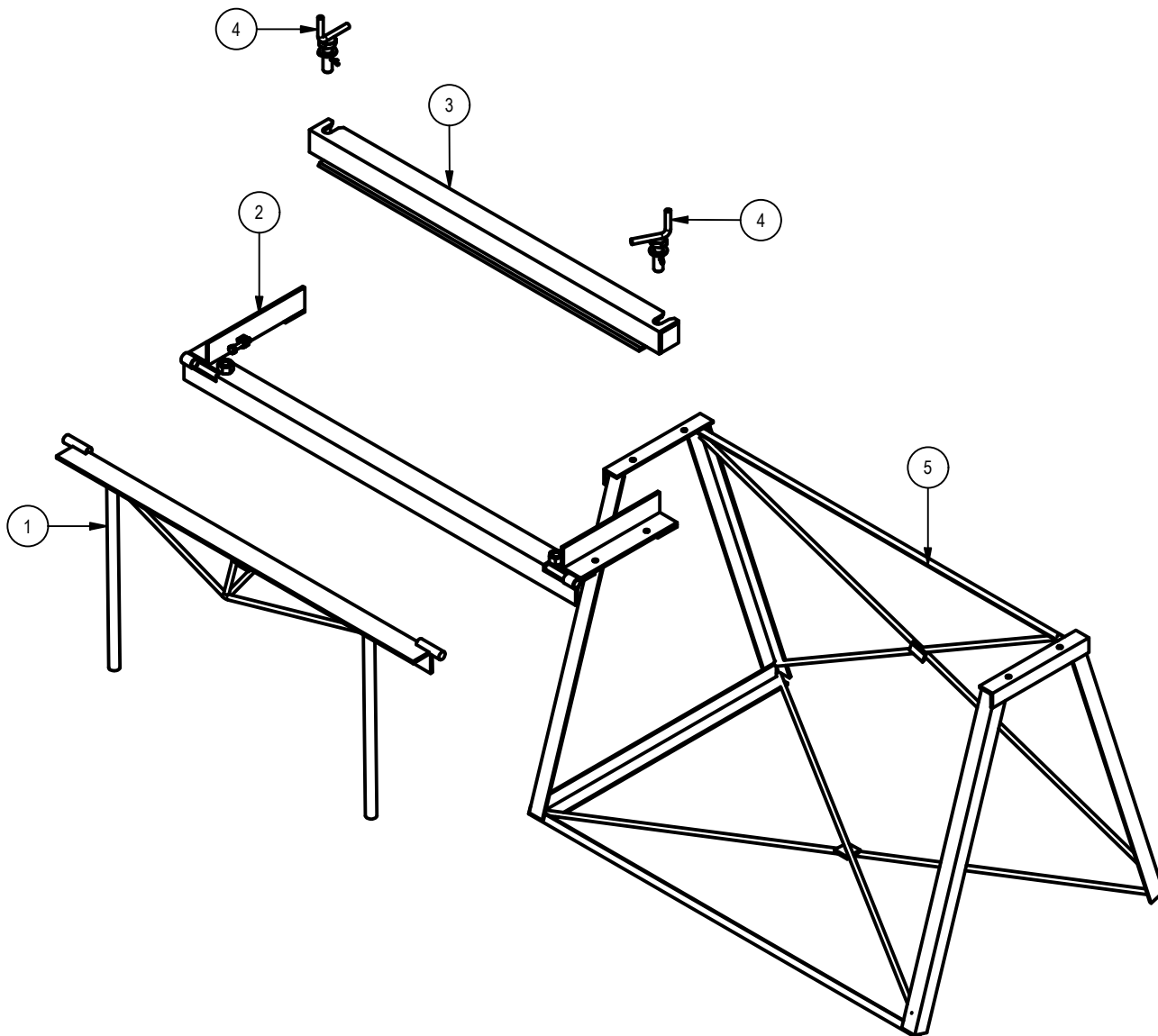



PROJECT Metal Folding Machine		CREATED BY A. PARDO		APPROVED BY D. Jaeger			
PART NAME Metal Folding Machine		PART CODE A1		DOCUMENT TYPE ASSEMBY			
 <p>Open Source Ecology e.V. Knobelsdorffstr. 22 14059 Berlin www.ose-germany.de +49 (0) 30 / 92282426</p>		LICENSE CERN-OHL		FILE NAME Metal Folding Machine.iam			
		SCALE 1 / 10		VERSION 1.0		QUANTITY	
				SHEET 1		DATE 15/11/2020	




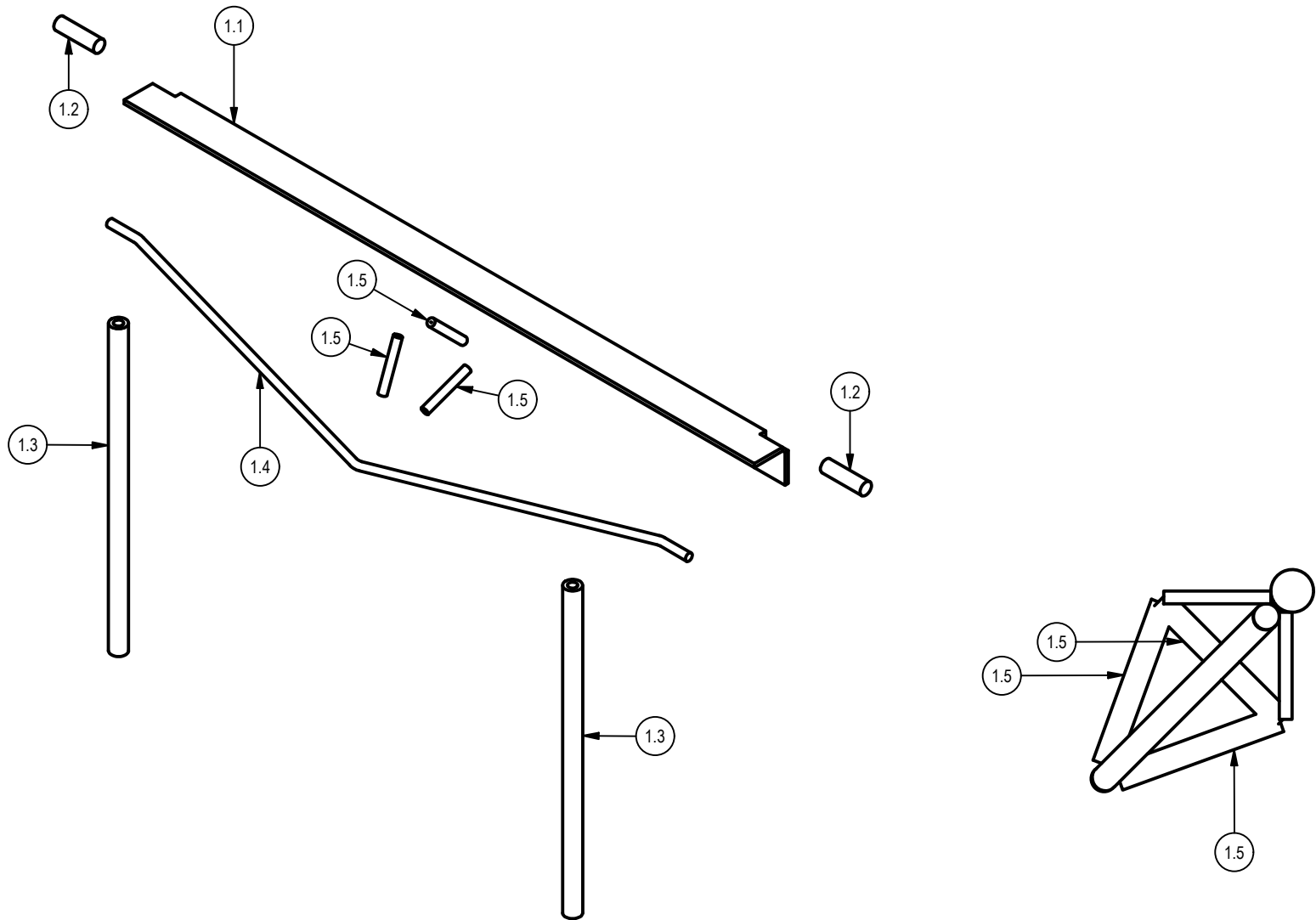
PROJECT Metal Folding Machine		CREATED BY A. PARDO		APPROVED BY D. Jaeger	
PART NAME Metal Folding Machine		PART CODE A1		DOCUMENT TYPE ASSEMBY	
 <p>Open Source Ecology e.V. Knobelsdorffstr. 22 14059 Berlin www.ose-germany.de +49 (0) 30 / 92282426</p>		LICENSE CERN-OHL		FILE NAME Metal Folding Machine.iam	
				SCALE 1 / 10	
		VERSION 1.0		QUANTITY	
		SHEET 1		DATE 15/11/2020	




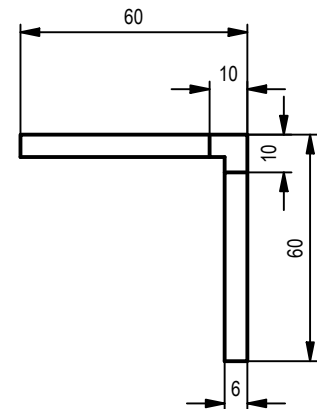
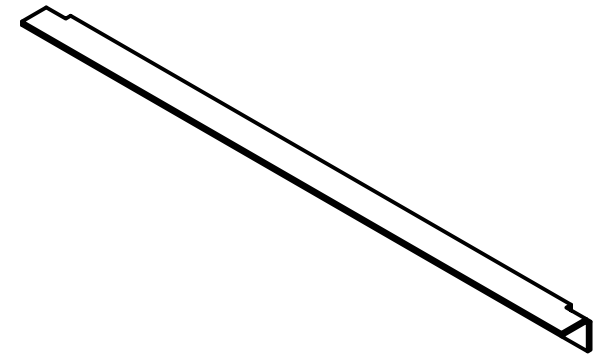
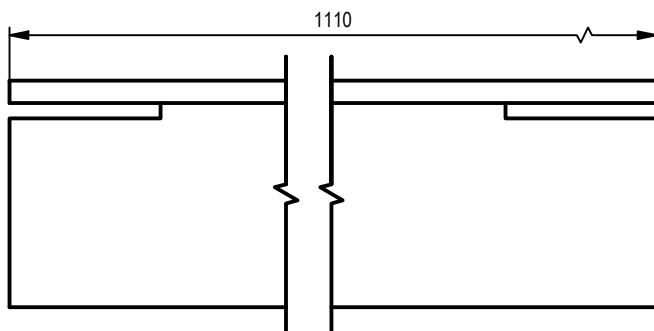
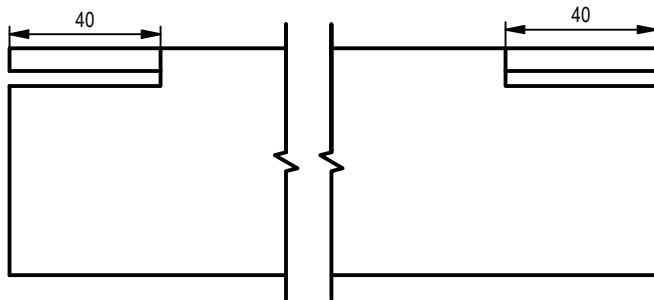
PROJECT Metal Folding Machine		CREATED BY A. PARDO		APPROVED BY D. Jaeger	
PART NAME Metal Folding Machine		PART CODE A1		DOCUMENT TYPE ASSEMBY	
 <p>Open Source Ecology e.V. Knobelsdorffstr. 22 14059 Berlin www.ose-germany.de +49 (0) 30 / 92282426</p>		LICENSE CERN-OHL		FILE NAME Metal Folding Machine.iam	
		SCALE 1 / 15		VERSION 1.0	
		SHEET 2		QUANTITY DATE 15/11/2020	


PARTS LIST							
POS.	POS. OLD	QTY	PART NAME	FILE NAME	PART TYPE	SPECIFICATION	SHEET
A1		1	METAL FOLDING MACHINE	METAL FOLDING MACHINE.iam	Production	Steel ASTM A36, steel S235JR	1
A1		1	METAL FOLDING MACHINE	METAL FOLDING MACHINE.iam	Production	Steel ASTM A36, steel S235JR	2
B1		1	PART LIST	PARTS LIST METAL FOLDING MACHINE.iam	Production	Steel ASTM A36, steel S235JR	3
1.0		1	SUB-METAL FOLDING MACHINE 1	Assembly1-metal folding.iam	Production	Steel ASTM A36, steel S235JR	4
1.1	5	1	FOLDING BEAM	FOLDING BEAM.ipt	Production	FIXED BEAM	5
1.2	6	2	PIVOT BAR	PIVOT BAR.ipt	Production	PIVOT BAR	6
1.3	7	2	HANDLE	HANDLE.ipt	Production	HANDLE	7
1.4	8	1	BEAM TIE	BEAM TIE.ipt	Production	BEAM TIE	8
1.5	9	3	BEAM STRUT	BEAM STRUT.ipt	Production	BEAM STRUT	9
2		1	SUB-METAL FOLDING MACHINE 2	Assembly2-metal folding.iam	Production	Steel ASTM A36, steel S235JR	10
2.1	11	1	FIXED BEAM	FIXED BEAM.ipt	Production	FIXED BEAM	11
2.2	12	2	FRAME SLIDE	FRAME SLIDE.ipt	Production	FRAME SLIDE	12
2.3	13	1	FRAME SPACER	FRAME SPACER.ipt	Production	FRAME SPACER	13
2.4	14	1	CLAMP SPACER	CLAMP SPACER.ipt	Production	CLAMP SPACER	14
2.5	15	1	PIVOT TUBE	PIVOT TUBE.ipt	Production	CLAMP TUBE	15
2.6		6	ANSI B18.2.4.5M - M10 x 1.5	ANSI B18.2.4.5M - M10 x 1.5 - 16.ipt	Standard	Hex Jam Nut	
2.7		2	ANSI B 18.2.4.1 M - M20 x 2,5	ANSI B 18.2.4.1 M - M20 x 2,5Style 1.ipt	Standard	Hex Nut	
2.8		2	ANSI B18.2.3.5M - M10 x 1,5 x 50	ANSI B18.2.3.5M - M10 x 1,5 x 50.ipt	Standard	Hex Bolt	
3		1	SUB-METAL FOLDING MACHINE 3	Assembly3-metal folding.iam	Production	Steel ASTM A36, steel S235JR	16
3.1	17	1	CLAMP TOP	CLAMP TOP.ipt	Production	CLAMP TOP	17
3.2	18	1	CLAMP BOTTOM	CLAMP BOTTOM.ipt	Production	CLAMP BOTTOM	18
3.3	19	1	CLAMP WEB	CLAMP WEB.ipt	Production	CLAMP WEB	19
4		1	SUB-METAL FOLDING MACHINE 4	Assembly4-metal folding.iam	Production	Steel ASTM A36, steel S235JR	20
4.1		2	ANSI B18.2.3.3M - M20x2,5 x 70	ANSI B18.2.3.3M - M20x2,5 x 70.ipt	Standard	Heavy Hex Screw (Regular Thread - Metric)	
4.2	21	2	CLAMP TUBE	CLAMP TUBE.ipt	Production	CLAMP TUBE	21
4.3		2	ANSI B18.22M - 20 N	ANSI B18.22M - 20 N.ipt	Standard	Metric Plain Washers	
4.4	22	1	CLAMP HANDLE	CLAMP HANDLE.ipt	Production	CLAMP HANDLE	22
4.5		2	SAE J487a - 3/16 x 1 3/4 Extended Prong Square Cut Type	SAE J487a - 3_16 x 1_3_4 Extended Prong Square Cut Type.ipt	Standard	Pin - Cotter	
5		1	SUB-METAL FOLDING MACHINE 5	Assembly5-metal folding.iam	Production	Steel ASTM A36, steel S235JR	23
5.1	24	1	STAND LEG	STAND LEG.ipt	Production	STAND LEG	24
5.2	25	2	STAND TOP	STAND TOP.ipt	Production	STAND TOP	25
5.3	26	1	STAND BOTTON	STAND BOTTON.ipt	Production	STAND BOTTON	26
5.4	27	1	STAND TIE	STAND TIE.ipt	Production	STAND TIE	27
5.5	28	1	STAND PLATE	STAND PLATE.ipt	Production	STAND PLATE	28
5.6	29	1	STAND SUPPORT	STAND SUPPORT.ipt	Production	STAND SUPPORT	29

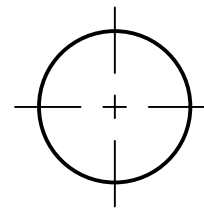
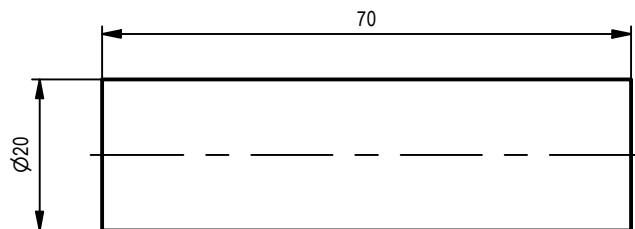
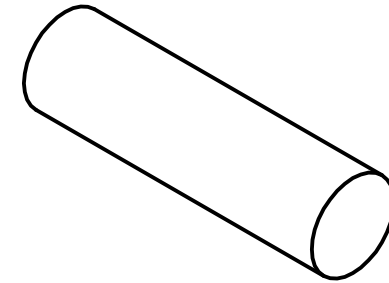
PROJECT METAL FOLDING MACHINE		CREATED BY A. PARDO	APPROVED BY D. Jaeger		
PART NAME parts list metal folding machine		PART CODE B1	DOCUMENT TYPE ASSEMBY	MATERIAL	
 Open Source Ecology e.V. Knobelsdorffstr. 22 14059 Berlin www.ose-germany.de +49 (0) 30 / 92282426		LICENSE CERN-OHL	FILE NAME parts list metal folding machine.iam	VERSION 1.0	QUANTITY
			SCALE	SHEET 3	DATE 25/10/2020




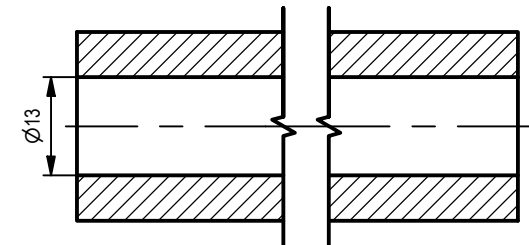
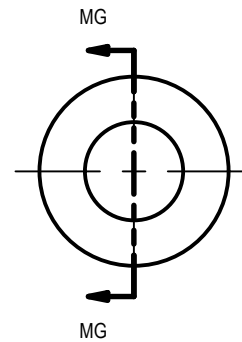
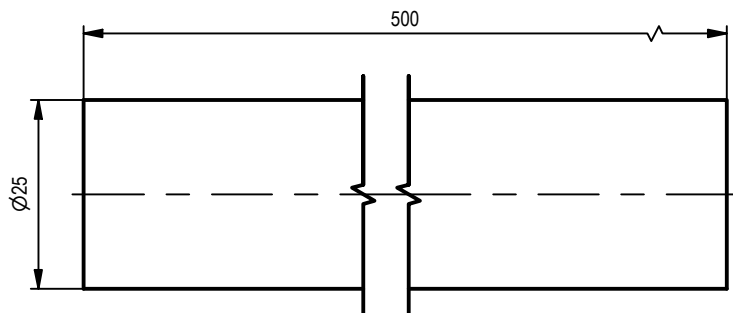
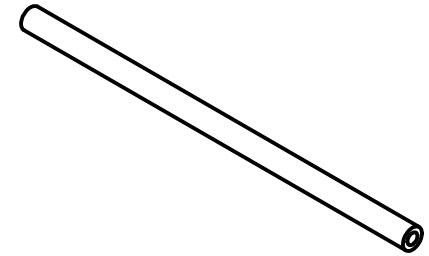
PROJECT METAL FOLDING MACHINE		CREATED BY A. PARDO		APPROVED BY D. Jaeger	
PART NAME Assembly1-metal folding		PART CODE 1		DOCUMENT TYPE ASSAMBY	
 Open Source Ecology e.V. Knobelsdorffstr. 22 14059 Berlin www.ose-germany.de +49 (0) 30 / 92282426		LICENSE CERN-OHL		FILE NAME Assembly1-metal folding.iam	
				SCALE 1 / 8	
				SHEET 4	
				DATE 25/10/2020	
				QUANTITY	




PROJECT METAL FOLDING MACHINE	CREATED BY A. PARDO	APPROVED BY D. Jaeger		
PART NAME FIXED BEAM	PART CODE 1.1	DOCUMENT TYPE Production	MATERIAL Steel ASTM A36, steel S235JR	
 <p>Open Source Ecology e.V. Knobelsdorffstr. 22 14059 Berlin www.os-e-germany.de +49 (0) 30 / 92282426</p>	LICENSE CERN-OHL	FILE NAME FOLDING BEAM.ipt	VERSION 1.0	QUANTITY 1
		SCALE 1 : 2	SHEET 5	DATE 19/10/2020

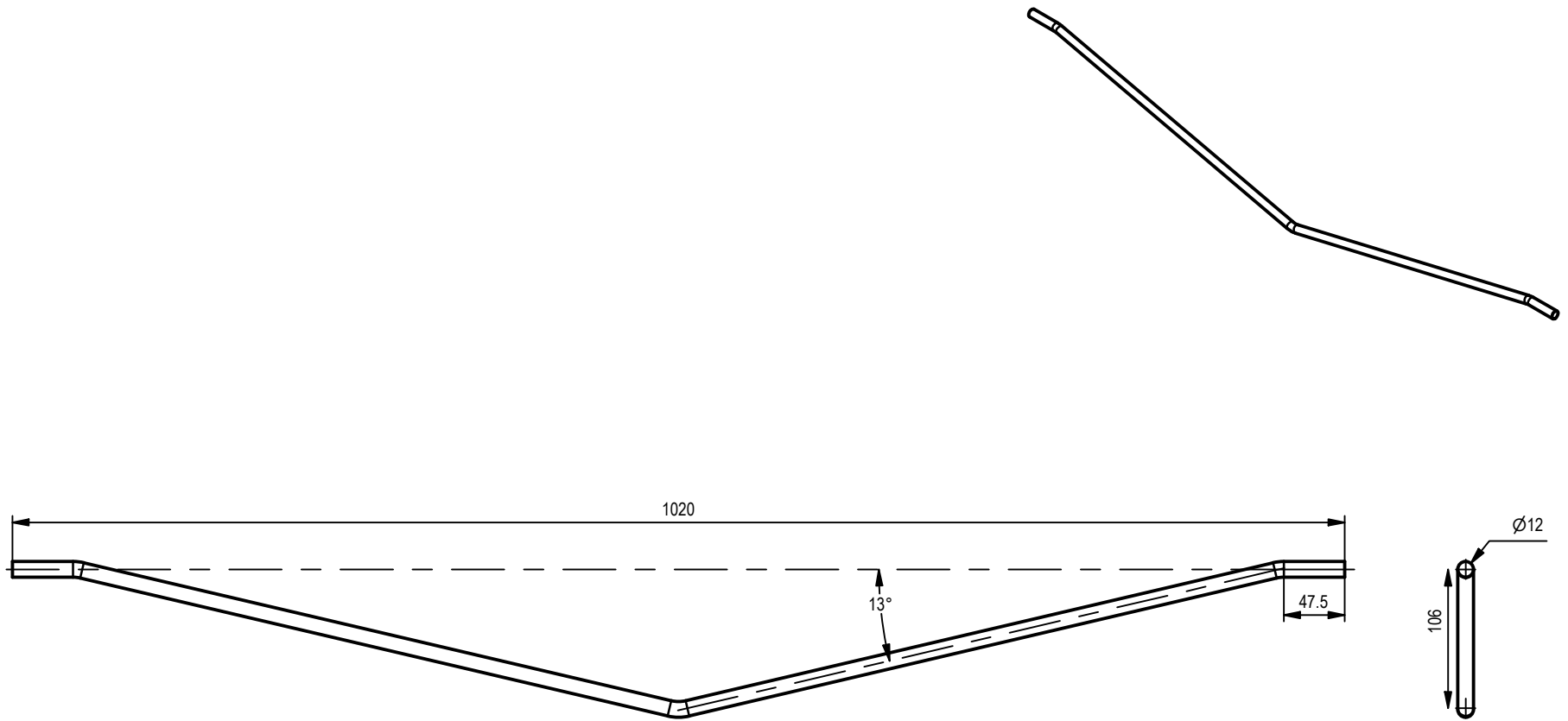



PROJECT METAL FOLDING MACHINE		CREATED BY A. PARDO		APPROVED BY D. Jaeger		
PART NAME PIVOT BAR		PART CODE 1.2	DOCUMENT TYPE Production		MATERIAL Steel ASTM A36, steel S235JR	
 Open Source Ecology e.V. Knobelsdorffstr. 22 14059 Berlin www.ose-germany.de +49 (0) 30 / 92282426		LICENSE CERN-OHL	FILE NAME PIVOT BAR.ipt		VERSION 1.0	QUANTITY 1
			SCALE 1 : 1	SHEET 6	DATE 19/10/2020	

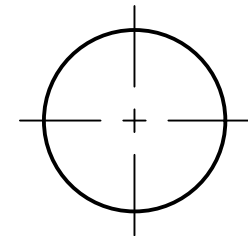
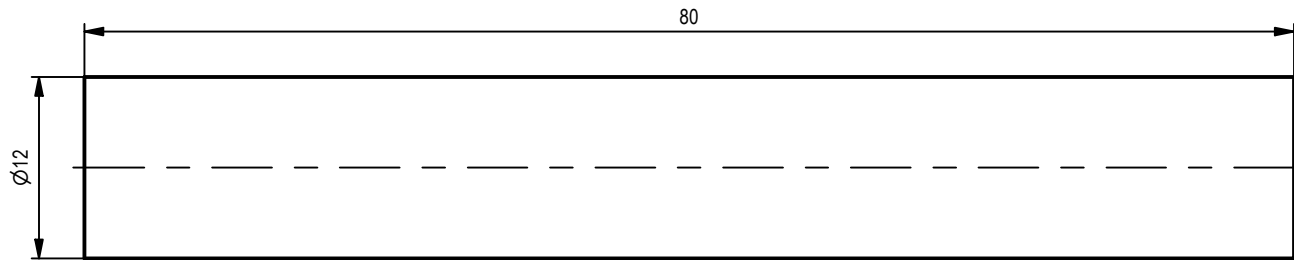
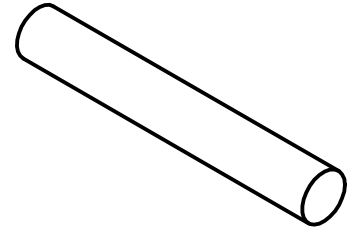



SECTION MG-MG
SCALE 1 : 1

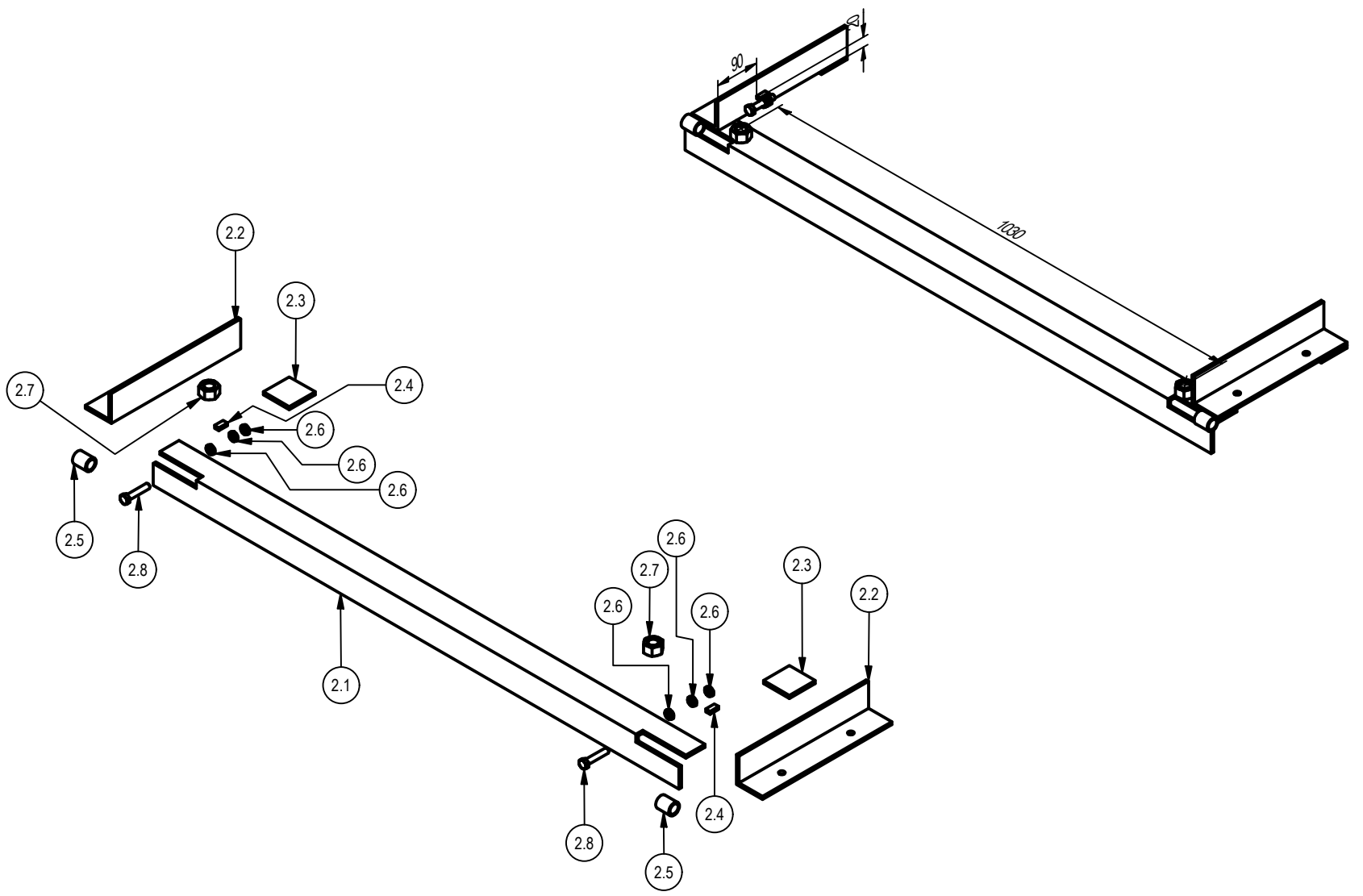
PROJECT METAL FOLDING MACHINE		CREATED BY A. PARDO		APPROVED BY D. Jaeger	
PART NAME HANDLE		PART CODE 1.3		DOCUMENT TYPE Production	
 Open Source Ecology e.V. Knobelsdorffstr. 22 14059 Berlin www.os-e-germany.de +49 (0) 30 / 92282426		LICENSE CERN-OHL		MATERIAL Steel ASTM A36, steel S235JR	
		FILE NAME HANDLE.ipt		VERSION 1.0	
		SCALE 1 : 1		SHEET 7	
				DATE 19/10/2020	




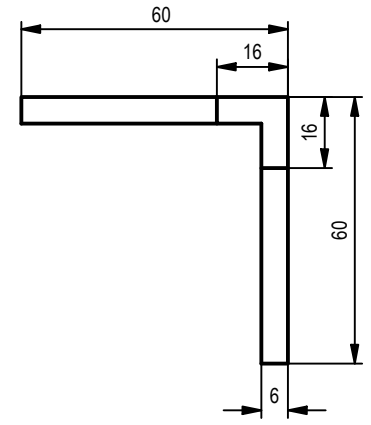
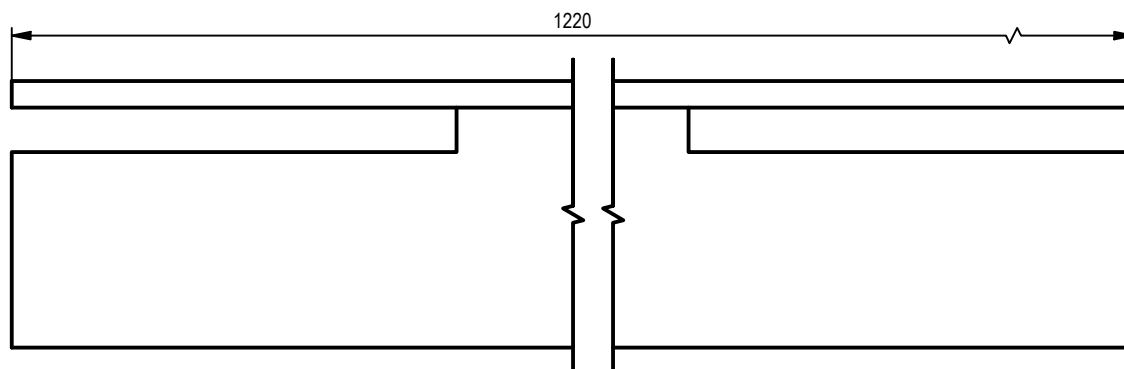
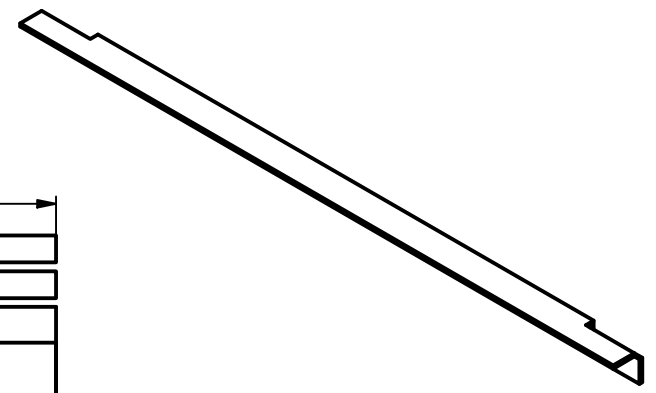
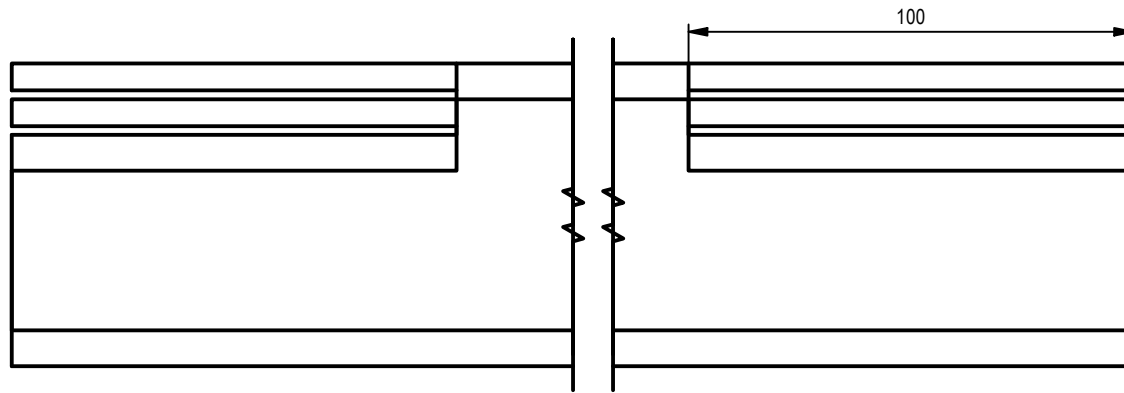
PROJECT METAL FOLDING MACHINE	CREATED BY A. PARDO	APPROVED BY D. Jaeger		
PART NAME BEAM TIE	PART CODE 1.4	DOCUMENT TYPE Production	MATERIAL Steel ASTM A36, steel S235JR	
 Open Source Ecology e.V. Knobelsdorffstr. 22 14059 Berlin www.ose-germany.de +49 (0) 30 / 92282426	LICENSE CERN-OHL	FILE NAME BEAM TIE.ipt	VERSION 1.0	QUANTITY 1
		SCALE 1 / 5	SHEET 8	DATE 19/10/2020




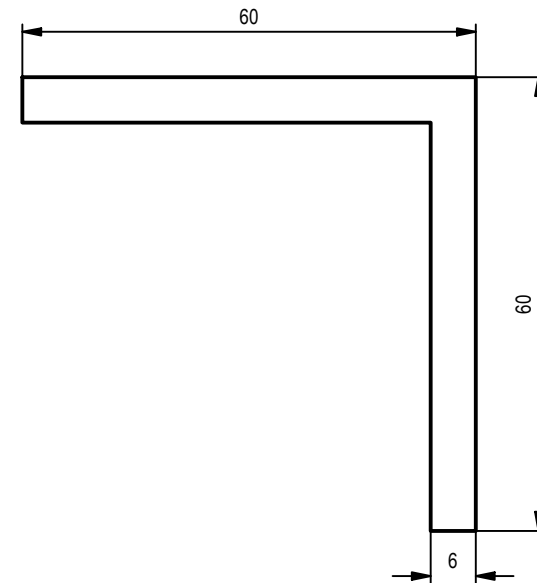
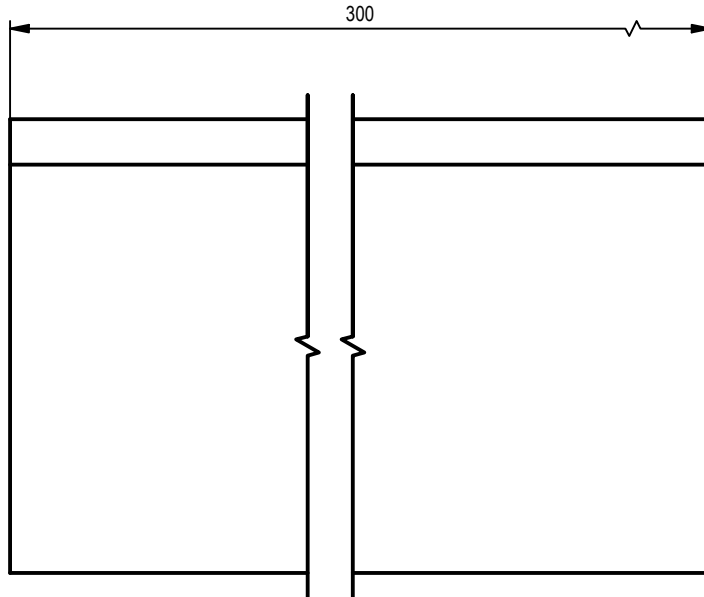
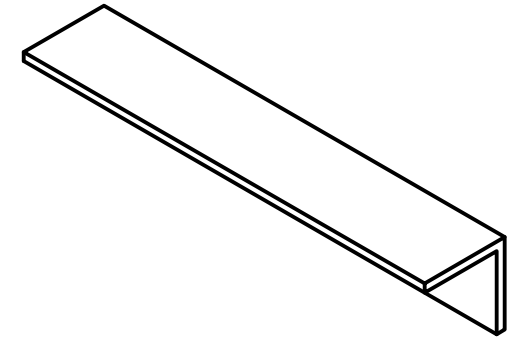
PROJECT METAL FOLDING MACHINE		CREATED BY A. PARDO		APPROVED BY D. Jaeger	
PART NAME BEAM STRUT		PART CODE 1.5		DOCUMENT TYPE Production	
 Open Source Ecology e.V. Knobelsdorffstr. 22 14059 Berlin www.ose-germany.de +49 (0) 30 / 92282426		LICENSE CERN-OHL		FILE NAME BEAM STRUT.ipt	
		SCALE 2 : 1		MATERIAL Steel ASTM A36, steel S235JR	
		VERSION 1.0		QUANTITY 1	
		SHEET 9		DATE 19/10/2020	




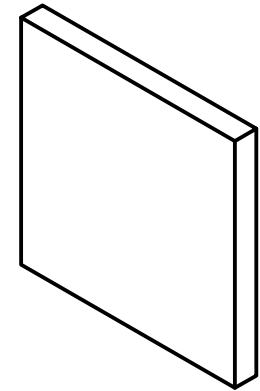
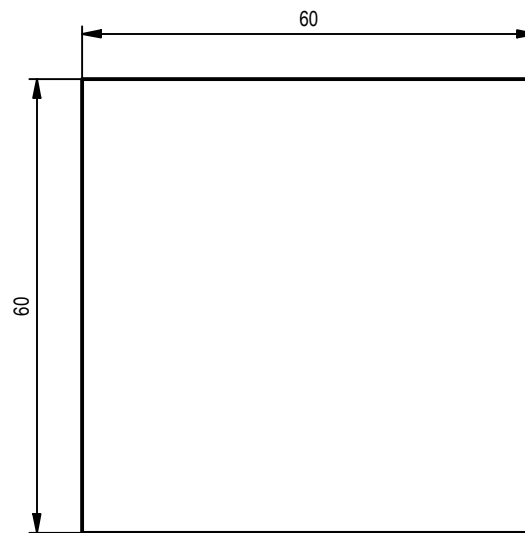
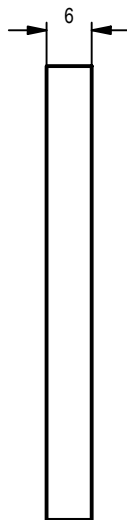
PROJECT METAL FOLDING MACHINE		CREATED BY A. PARDO		APPROVED BY D. Jaeger	
PART NAME Assembly2-metal folding		PART CODE 2		DOCUMENT TYPE ASSAMBY	
 Open Source Ecology e.V. Knobelsdorffstr. 22 14059 Berlin www.ose-germany.de +49 (0) 30 / 92282426		LICENSE CERN-OHL		FILE NAME Assembly2-metal folding.iam	
		SCALE 1 / 10		VERSION 1.0	
				SHEET 10	
				DATE 12/11/2020	




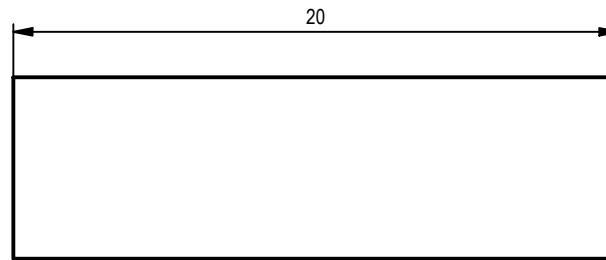
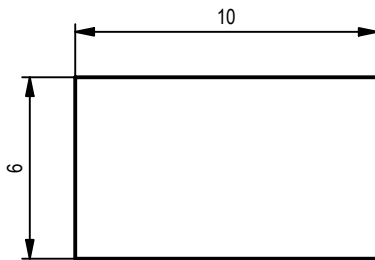
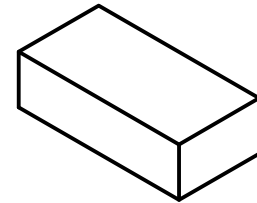
PROJECT METAL FOLDING MACHINE		CREATED BY A. PARDO		APPROVED BY D. Jaeger	
PART NAME FIXED BEAM		PART CODE 2.1		DOCUMENT TYPE Production	
 Open Source Ecology e.V. Knobelsdorffstr. 22 14059 Berlin www.ose-germany.de +49 (0) 30 / 92282426		LICENSE CERN-OHL		MATERIAL Steel ASTM A36, steel S235JR	
		FILE NAME FIXED BEAM.ipt		VERSION 1.0	
		SCALE 1 : 1.7		SHEET 11	
				DATE 19/10/2020	




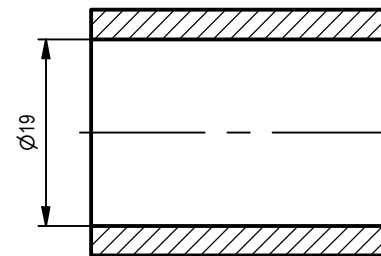
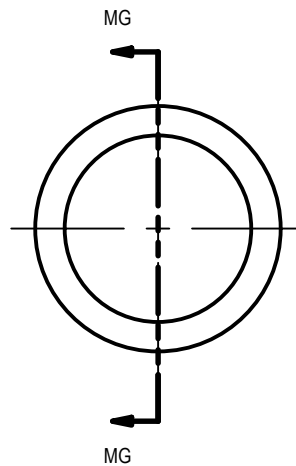
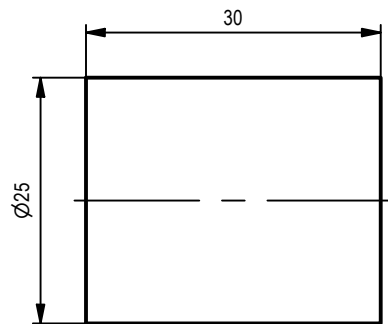
PROJECT METAL FOLDING MACHINE		CREATED BY A. PARDO		APPROVED BY D. Jaeger	
PART NAME FRAME SLIDE		PART CODE 2.2		DOCUMENT TYPE Production	
 Open Source Ecology e.V. Knobelsdorffstr. 22 14059 Berlin www.ose-germany.de +49 (0) 30 / 92282426		LICENSE CERN-OHL		MATERIAL Steel ASTM A36, steel S235JR	
		FILE NAME FRAME SLIDE.ipt		VERSION 1.0	
		SCALE 1:1		QUANTITY 1	
		SHEET 12		DATE 19/10/2020	



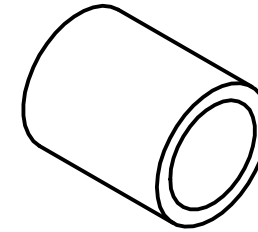
PROJECT METAL FOLDING MACHINE		CREATED BY A. PARDO		APPROVED BY D. Jaeger	
PART NAME FRAME SPACER		PART CODE 2.3		DOCUMENT TYPE Production	
 <p>Open Source Ecology e.V. Knobelsdorffstr. 22 14059 Berlin www.os-e-germany.de +49 (0) 30 / 92282426</p>		LICENSE CERN-OHL		MATERIAL Steel ASTM A36, steel S235JR	
		FILE NAME FRAME SPACER.ipt		VERSION 1.0	QUANTITY 1
		SCALE 1 : 1		SHEET 13	DATE 19/10/2020




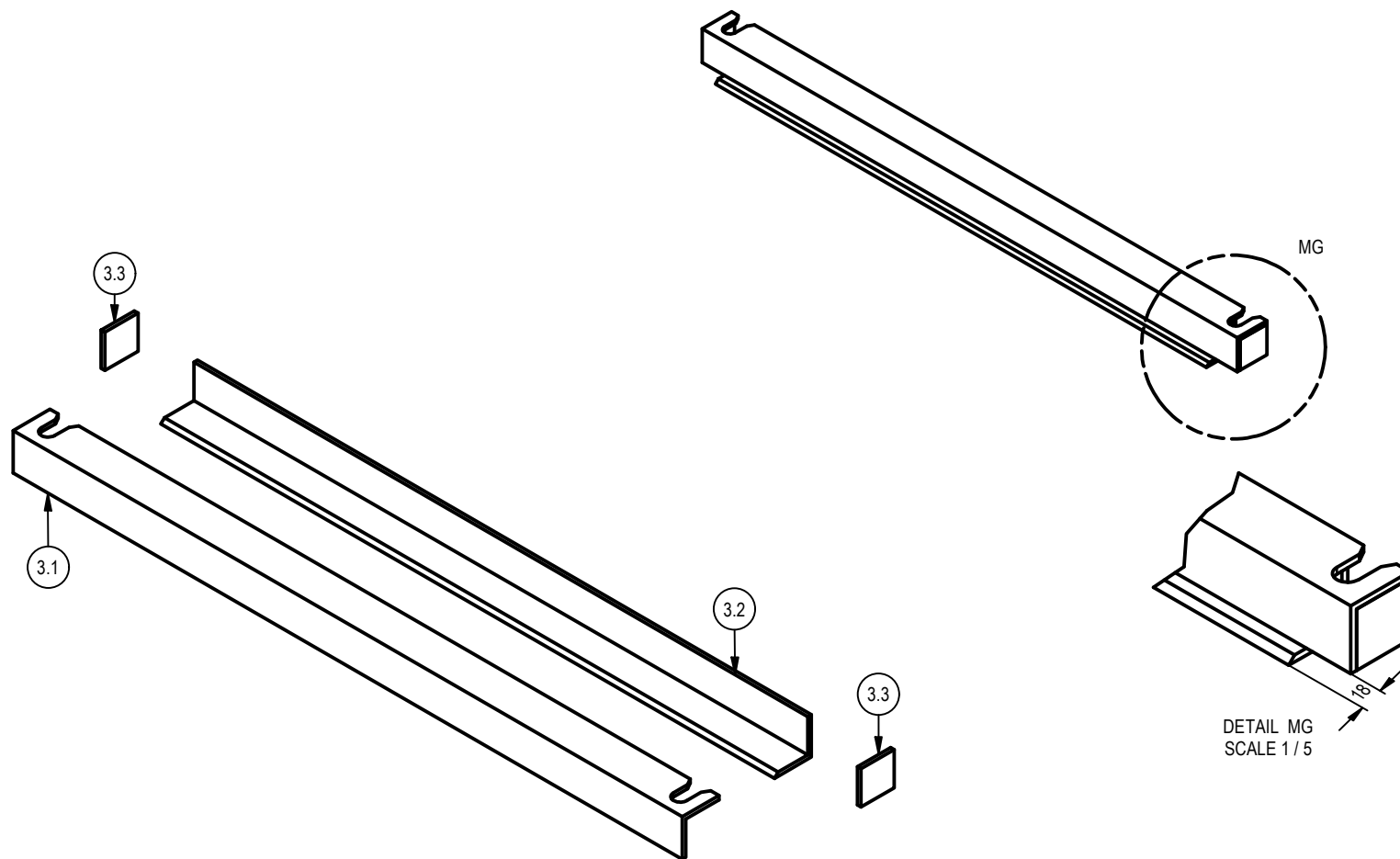
PROJECT METAL FOLDING MACHINE		CREATED BY A. PARDO		APPROVED BY D. Jaeger	
PART NAME CLAMP SPACER		PART CODE 2.4		DOCUMENT TYPE Production	
 Open Source Ecology e.V. Knobelsdorffstr. 22 14059 Berlin www.ose-germany.de +49 (0) 30 / 92282426		LICENSE CERN-OHL		MATERIAL Steel ASTM A36, steel S235JR	
		FILE NAME CLAMP SPACER.ipt		VERSION 1.0	
		SCALE 4 : 1		SHEET 14	
				DATE 19/10/2020	




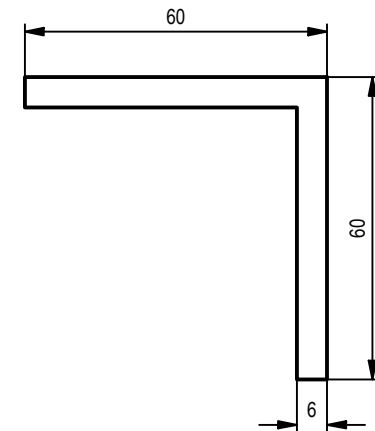
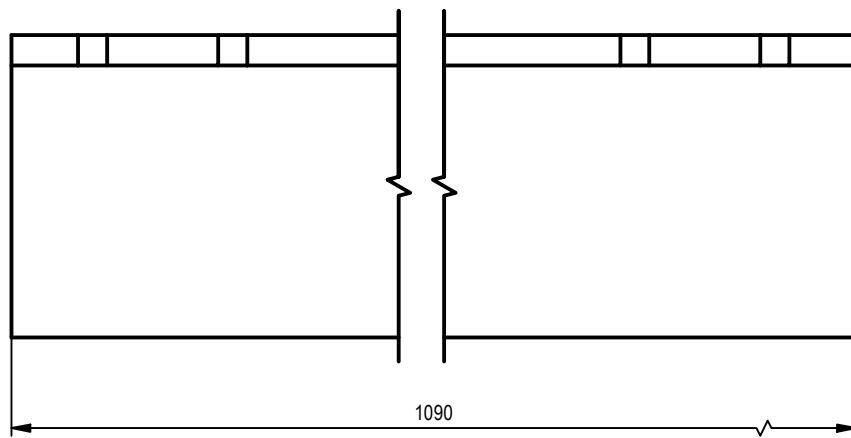
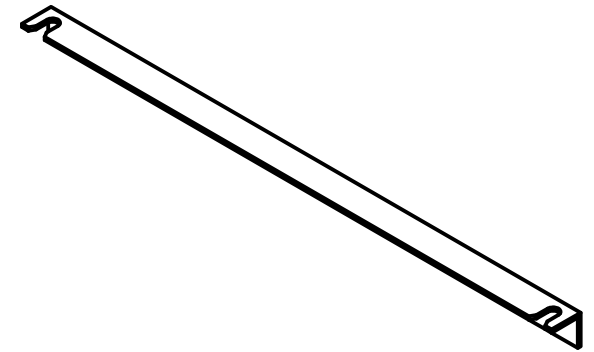
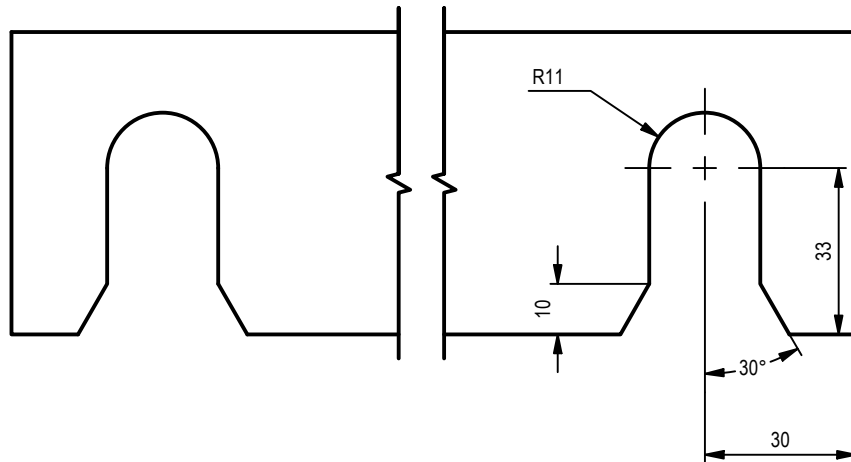
SECTION MG-MG
SCALE 1.3 : 1




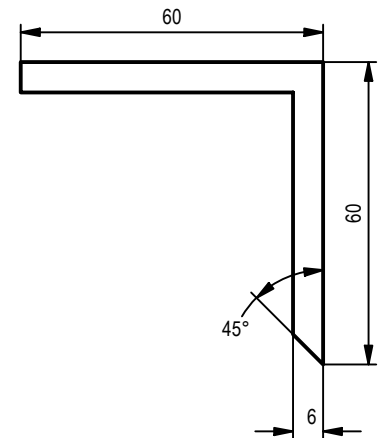
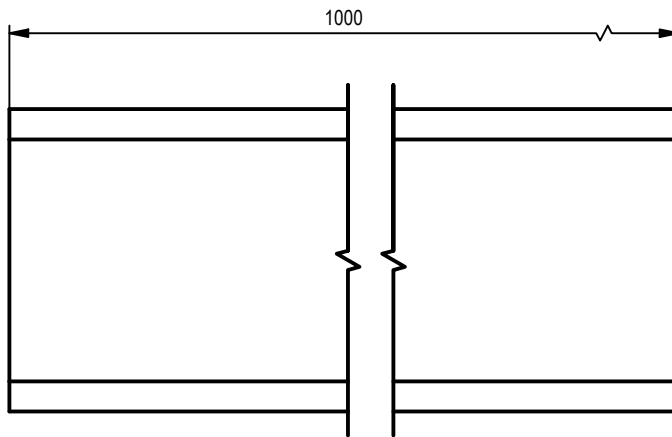
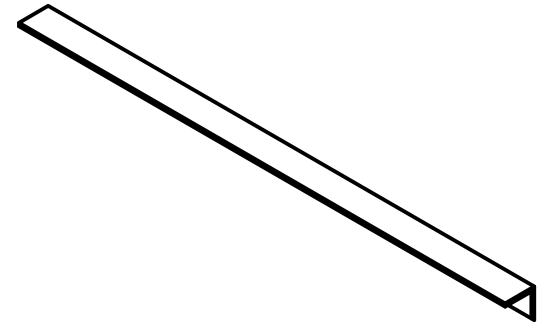
PROJECT METAL FOLDING MACHINE		CREATED BY A. PARDO		APPROVED BY D. Jaeger	
PART NAME CLAMP TUBE		PART CODE 2.5		DOCUMENT TYPE Production	
 <p>Open Source Ecology e.V. Knobelsdorffstr. 22 14059 Berlin www.ose-germany.de +49 (0) 30 / 92282426</p>		LICENSE CERN-OHL		MATERIAL Steel ASTM A36, steel S235JR	
		FILE NAME PIVOT TUBE.ipt		VERSION 1.0	
		SCALE 1.3 : 1		SHEET 15	
				DATE 19/10/2020	




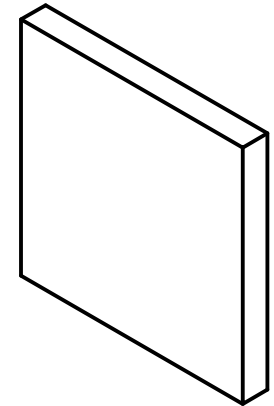
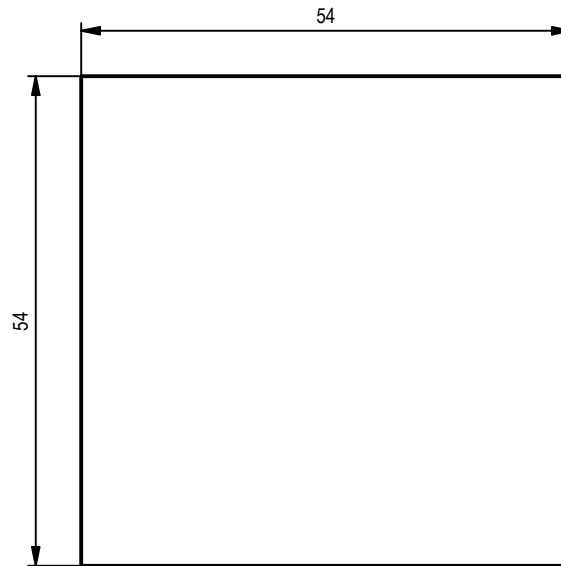
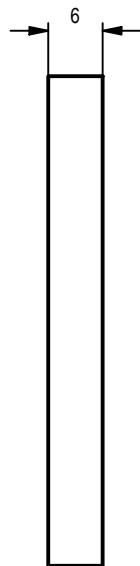
PROJECT METAL FOLDING MACHINE		CREATED BY A. PARDO		APPROVED BY D. Jaeger	
PART NAME Assembly3-metal folding		PART CODE 3		DOCUMENT TYPE ASSAEMBY	
 Open Source Ecology e.V. Knobelendorffstr. 22 14059 Berlin www.ose-germany.de +49 (0) 30 / 92282426		LICENSE CERN-OHL		FILE NAME Assembly3-metal folding.iam	
		SCALE 1 / 8		VERSION 1.0	
		SHEET 16		QUANTITY DATE 12/11/2020	




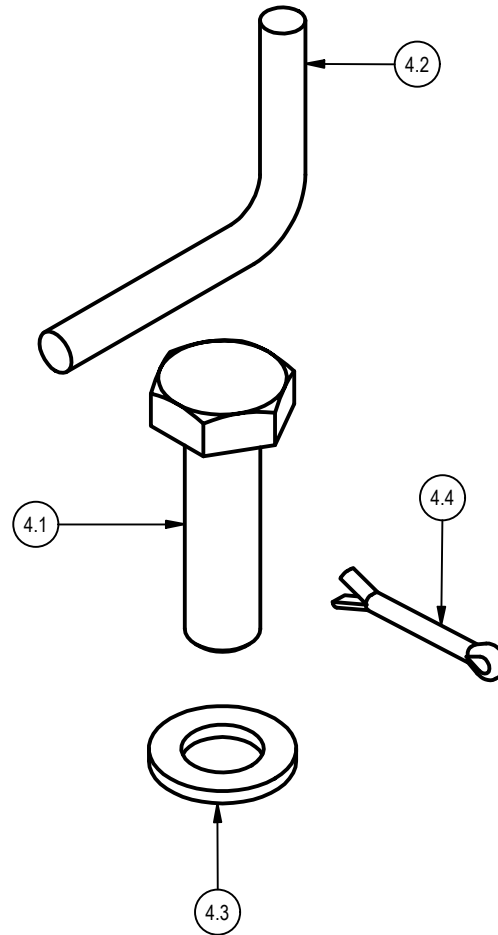
PROJECT METAL FOLDING MACHINE		CREATED BY A. PARDO		APPROVED BY D. Jaeger	
PART NAME CLAMP TOP		PART CODE 3.1		DOCUMENT TYPE Production	
 Open Source Ecology e.V. Knobelsdorffstr. 22 14059 Berlin www.ose-germany.de +49 (0) 30 / 92282426		LICENSE CERN-OHL		FILE NAME CLAMP TOP.ipt	
		SCALE 1 : 1.5		MATERIAL Steel ASTM A36, steel S235JR	
		VERSION 1.0		QUANTITY 1	
		SHEET 17		DATE 19/10/2020	




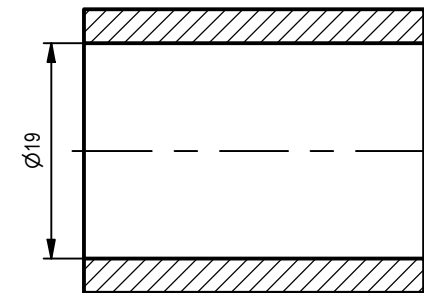
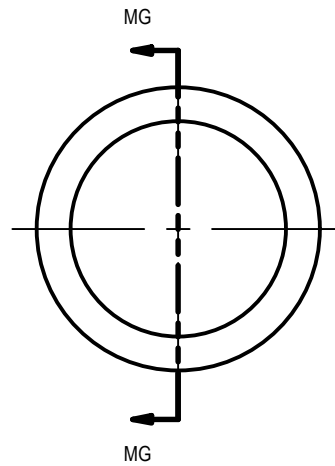
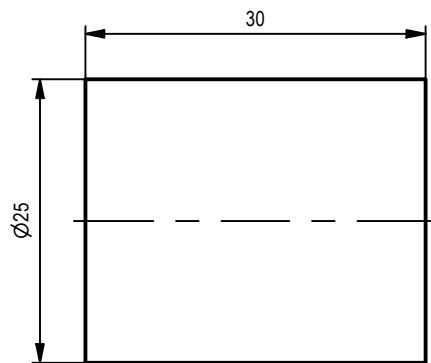
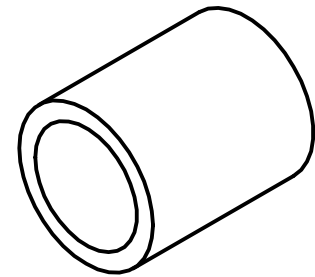
PROJECT METAL FOLDING MACHINE		CREATED BY A. PARDO		APPROVED BY D. Jaeger	
PART NAME CLAMP BOTTOM		PART CODE 3.2		DOCUMENT TYPE Production	
 Open Source Ecology e.V. Knobelsdorffstr. 22 14059 Berlin www.ose-germany.de +49 (0) 30 / 92282426		LICENSE CERN-OHL		MATERIAL Steel ASTM A36, steel S235JR	
		FILE NAME CLAMP BOTTOM.ipt		VERSION 1.0	
		SCALE 1 : 1.5		QUANTITY 1	
		SHEET 18		DATE 19/10/2020	




PROJECT METAL FOLDING MACHINE		CREATED BY A. PARDO		APPROVED BY D. Jaeger	
PART NAME CLAMP WEB		PART CODE 3.3		DOCUMENT TYPE Production	
 Open Source Ecology e.V. Knobelsdorffstr. 22 14059 Berlin www.ose-germany.de +49 (0) 30 / 92282426		LICENSE CERN-OHL		MATERIAL Steel ASTM A36, steel S235JR	
		FILE NAME CLAMP WEB.ipt		VERSION 1.0	
		SCALE 1.2 : 1		SHEET 19	
				DATE 19/10/2020	

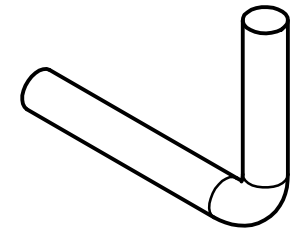
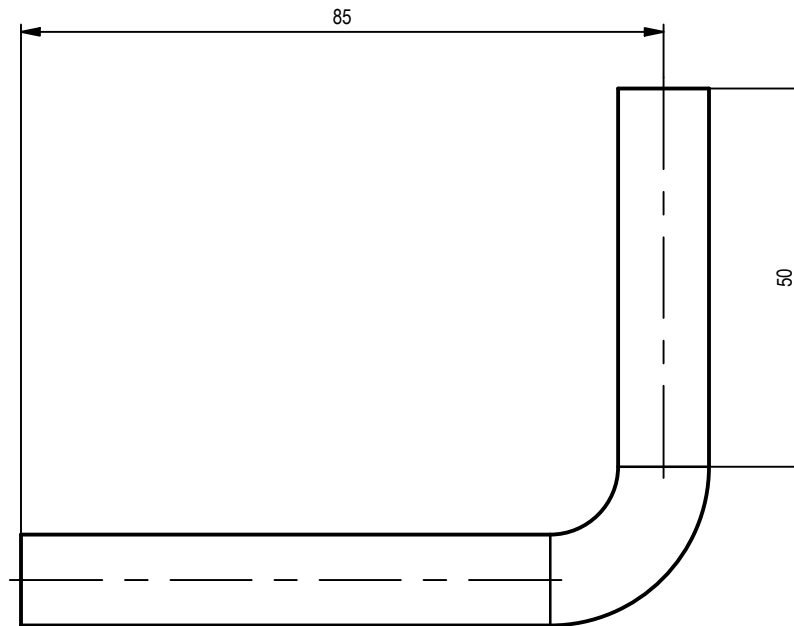
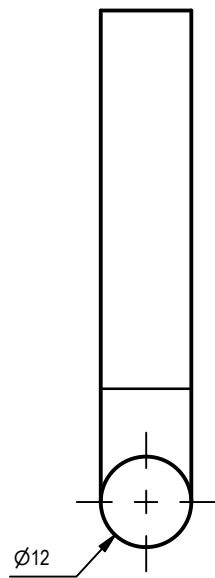



PROJECT METAL FOLDING MACHINE		CREATED BY A. PARDO		APPROVED BY D. Jaeger	
PART NAME Assembly4-metal folding		PART CODE 4		DOCUMENT TYPE ASAMBY	
 Open Source Ecology e.V. Knobelsdorffstr. 22 14059 Berlin www.ose-germany.de +49 (0) 30 / 92282426		LICENSE CERN-OHL		FILE NAME Assembly4-metal folding.iam	
		SCALE 1 / 2		VERSION 1.0	
		SHEET 20		QUANTITY DATE 12/11/2020	

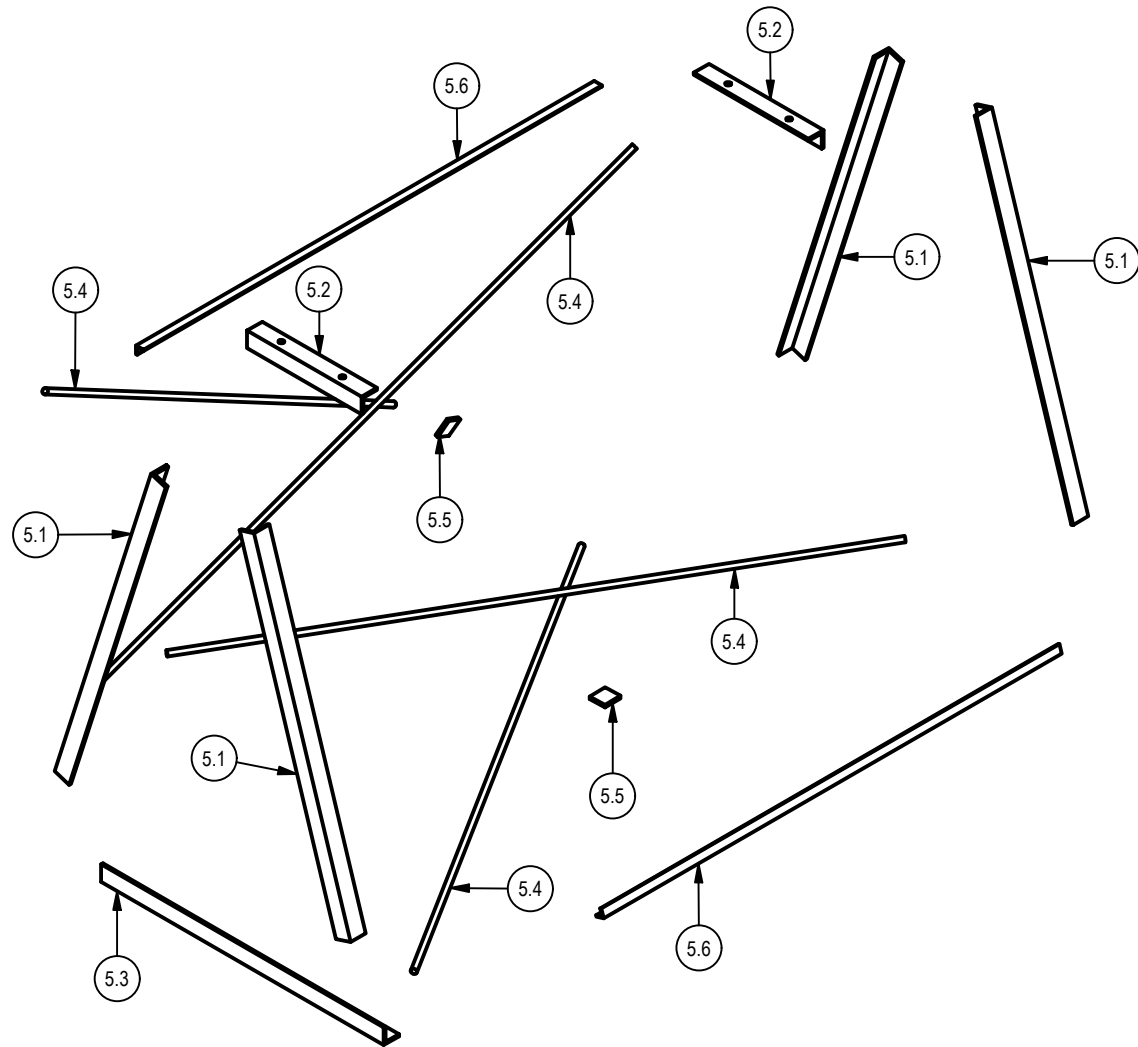



SECTION MG-MG
SCALE 1.5: 1

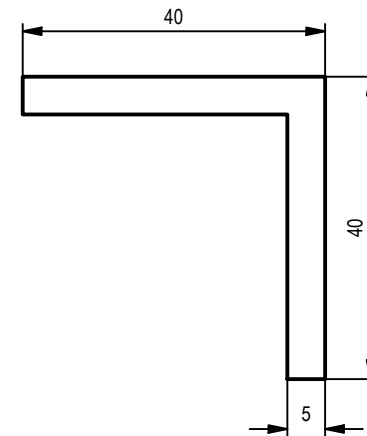
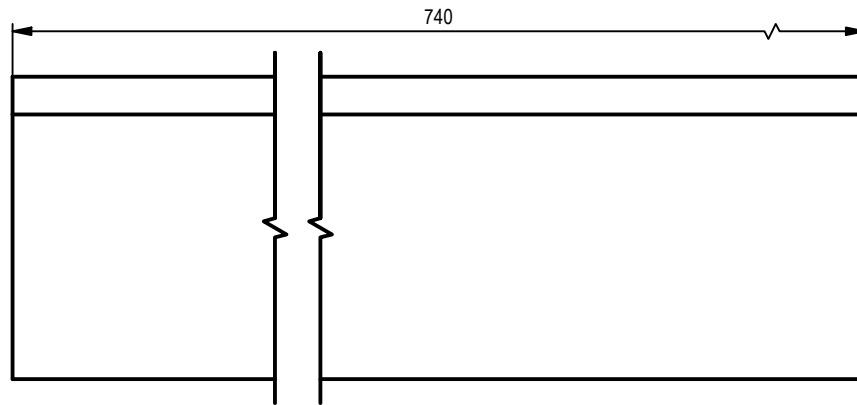
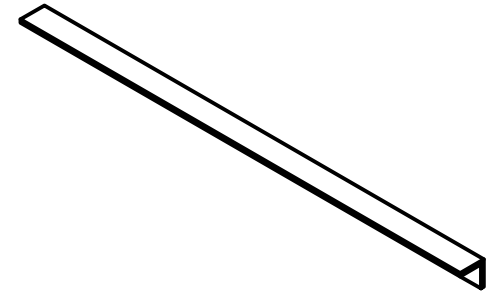
PROJECT METAL FOLDING MACHINE		CREATED BY A. PARDO		APPROVED BY D. Jaeger	
PART NAME CLAMP TUBE		PART CODE 4.2		DOCUMENT TYPE Production	
 <p>Open Source Ecology e.V. Knobelsdorffstr. 22 14059 Berlin www.ose-germany.de +49 (0) 30 / 92282426</p>		LICENSE CERN-OHL		MATERIAL Steel ASTM A36, steel S235JR	
		FILE NAME CLAMP TUBE.ipt		VERSION 1.0	
		SCALE 1.5: 1		SHEET 21	
				DATE 19/10/2020	




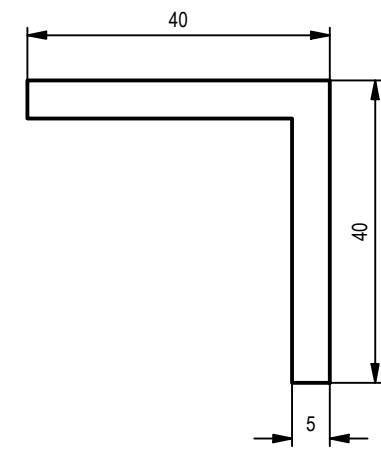
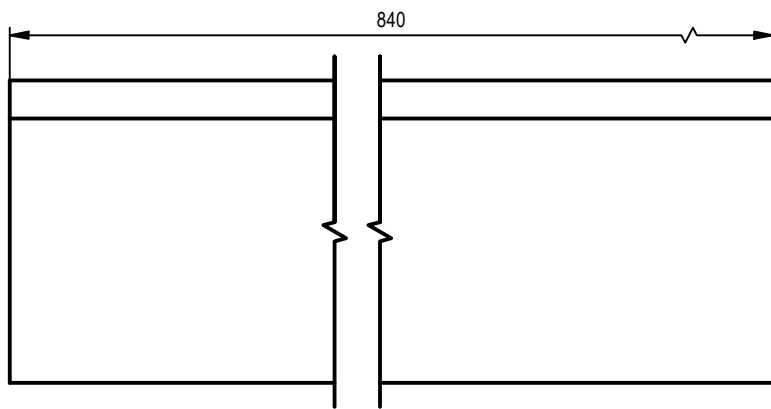
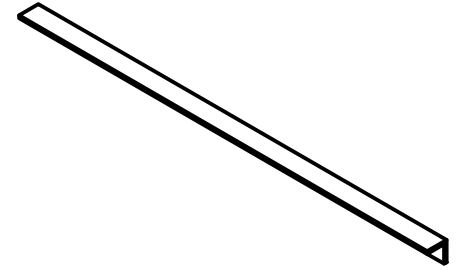
PROJECT METAL FOLDING MACHINE		CREATED BY A. PARDO		APPROVED BY D. Jaeger	
PART NAME CLAMP HANDLE		PART CODE 4.4		DOCUMENT TYPE Production	
 Open Source Ecology e.V. Knobelsdorffstr. 22 14059 Berlin www.ose-germany.de +49 (0) 30 / 92282426		LICENSE CERN-OHL		FILE NAME CLAMP_HANDLE.ipt	
		SCALE 1 : 1		MATERIAL Steel ASTM A36, steel S235JR	
		VERSION 1.0		QUANTITY 1	
		SHEET 22		DATE 19/10/2020	




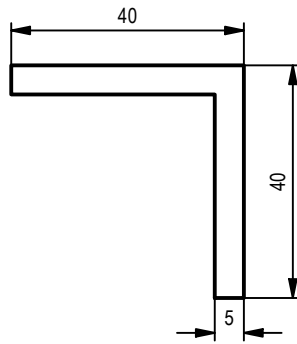
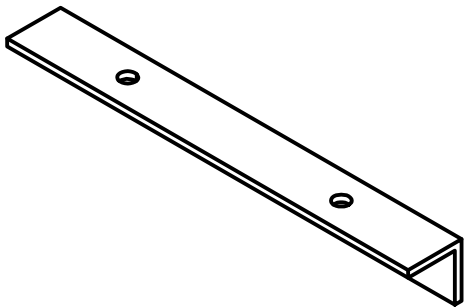
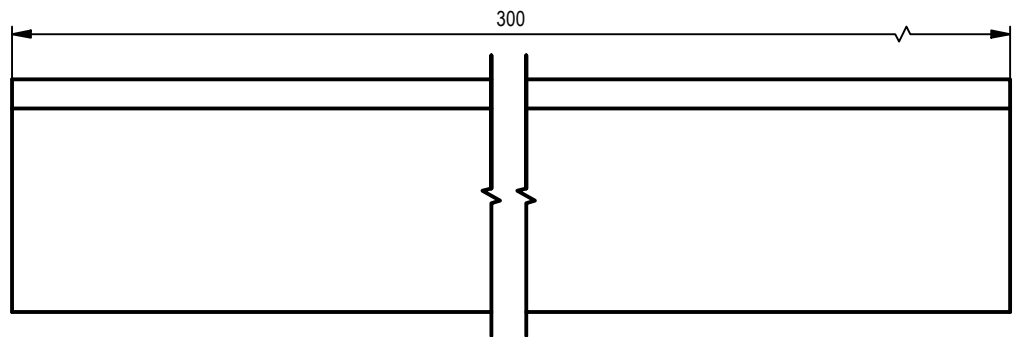
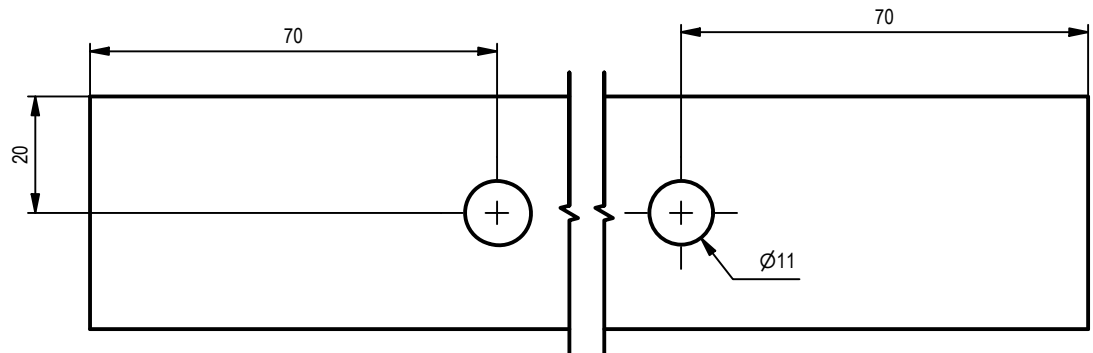
PROJECT MEATL FOLDING MACHINE		CREATED BY A. PARDO		APPROVED BY D. Jaeger	
PART NAME Assembly5-metal folding		PART CODE 5		DOCUMENT TYPE ASSEMBY	
 <p>Open Source Ecology e.V. Knobelsdorffstr. 22 14059 Berlin www.o-se-germany.de +49 (0) 30 / 92282426</p>		LICENSE CERN-OHL		FILE NAME Assembly5-metal folding.iam	
		SCALE 1 / 14		VERSION 1.0	
		SHEET 23		QUANTITY DATE 12/11/2020	




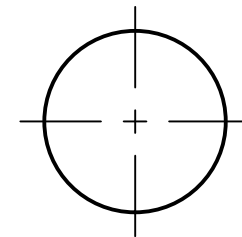
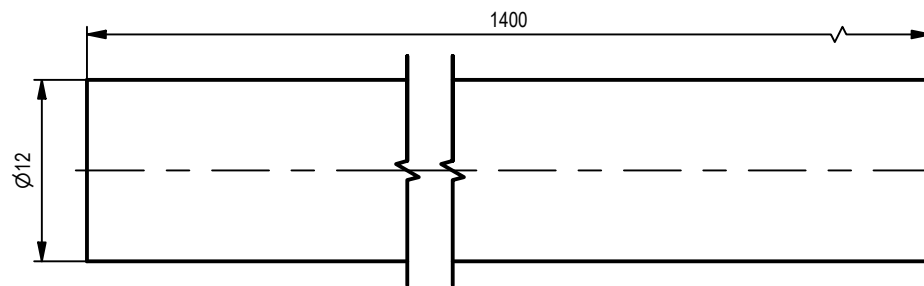
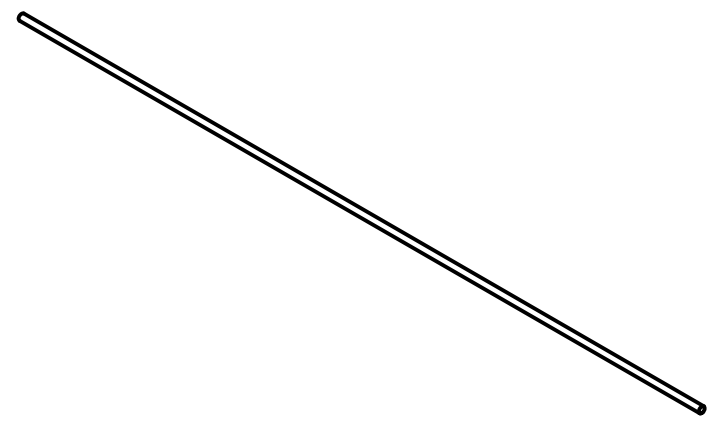
PROJECT METAL FOLDING MACHINE		CREATED BY A. PARDO		APPROVED BY D. Jaeger		
PART NAME STAND BOTTON		PART CODE 5.3	DOCUMENT TYPE Production		MATERIAL Steel ASTM A36, steel S235JR	
 Open Source Ecology e.V. Knobelsdorffstr. 22 14059 Berlin www.ose-germany.de +49 (0) 30 / 92282426		LICENSE CERN-OHL	FILE NAME STAND BOTTON.ipt		VERSION 1.0	QUANTITY 1
			SCALE 1 : 1	SHEET 26	DATE 19/10/2020	




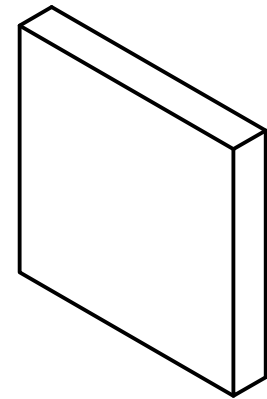
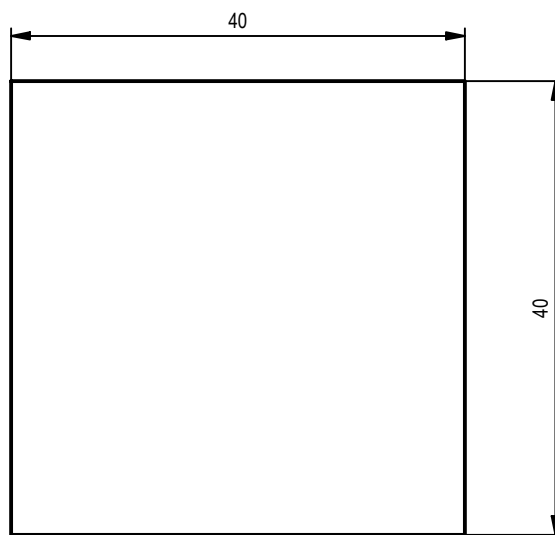
PROJECT METAL FOLDING MACHINE		CREATED BY A. PARDO		APPROVED BY D. Jaeger		
PART NAME STAND LEG		PART CODE 5.1	DOCUMENT TYPE Production		MATERIAL Steel ASTM A36, steel S235JR	
 Open Source Ecology e.V. Knobelsdorfstr. 22 14059 Berlin www.os-e-germany.de +49 (0) 30 / 92282426		LICENSE CERN-OHL	FILE NAME STAND_LEG.ipt		VERSION 1.0	QUANTITY 1
			SCALE 1:1	SHEET 24	DATE 19/10/2020	




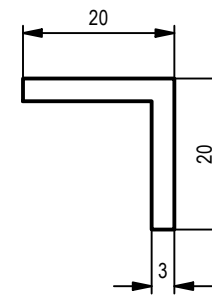
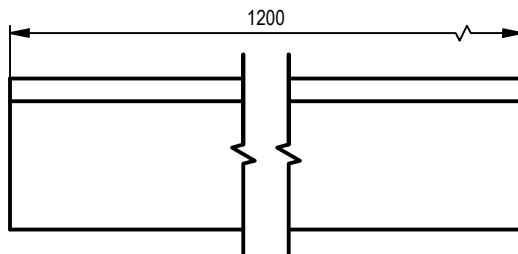
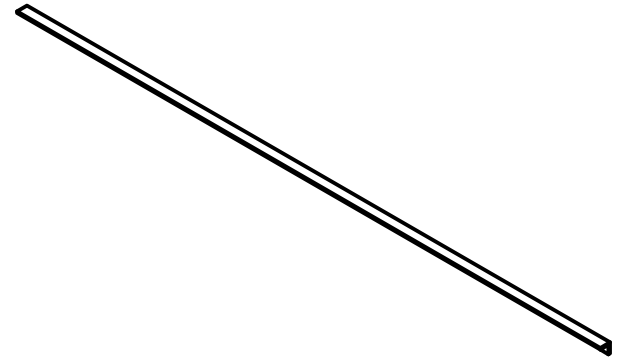
PROJECT METAL FOLDING MACHINE		CREATED BY A. PARDO		APPROVED BY D. Jaeger	
PART NAME STAND TOP		PART CODE 5.2		DOCUMENT TYPE Production	
 Open Source Ecology e.V. Knobelsdorffstr. 22 14059 Berlin www.os-e-germany.de +49 (0) 30 / 92282426		LICENSE CERN-OHL		FILE NAME STAND TOP.ipt	
		SCALE 1 : 1.3		MATERIAL Steel ASTM A36, steel S235JR	
		VERSION 1.0		QUANTITY 1	
		SHEET 25		DATE 19/10/2020	




PROJECT METAL FOLDING MACHINE		CREATED BY A. PARDO		APPROVED BY D. Jaeger	
PART NAME STAND TIE		PART CODE 5.4		DOCUMENT TYPE Production	
 Open Source Ecology e.V. Knobelsdorffstr. 22 14059 Berlin www.o-se-germany.de +49 (0) 30 / 92282426		LICENSE CERN-OHL		MATERIAL Steel ASTM A36, steel S235JR	
		FILE NAME STAND TIE.ipt		VERSION 1.0	QUANTITY 1
		SCALE 2 : 1	SHEET 27	DATE 19/10/2020	



PROJECT METAL FOLDING MACHINE	CREATED BY A. PARDO	APPROVED BY D. Jaeger		
PART NAME STAND PLATE	PART CODE 5.5	DOCUMENT TYPE Production	MATERIAL Steel ASTM A36, steel S235JR	
 <p>Open Source Ecology e.V. Knobelsdorfstr. 22 14059 Berlin www.os-e-germany.de +49 (0) 30 / 92282426</p>	LICENSE CERN-OHL	FILE NAME STAND PLATE.ipt	VERSION 1.0	QUANTITY 1
		SCALE 1.5 : 1	SHEET 28	DATE 19/10/2020



PROJECT METAL FOLDING MACHINE		CREATED BY A. PARDO		APPROVED BY D. Jaeger	
PART NAME STAND SUPPORT		PART CODE 5.6		DOCUMENT TYPE Production	
 <p>Open Source Ecology e.V. Knobelsdorffstr. 22 14059 Berlin www.ose-germany.de +49 (0) 30 / 92282426</p>		LICENSE CERN-OHL		MATERIAL Steel ASTM A36, steel S235JR	
		FILE NAME STAND SUPPORT.ipt		VERSION 1.0	
		SCALE 1 : 1		SHEET 29	
				DATE 19/10/2020	