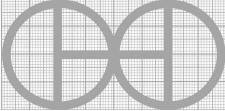
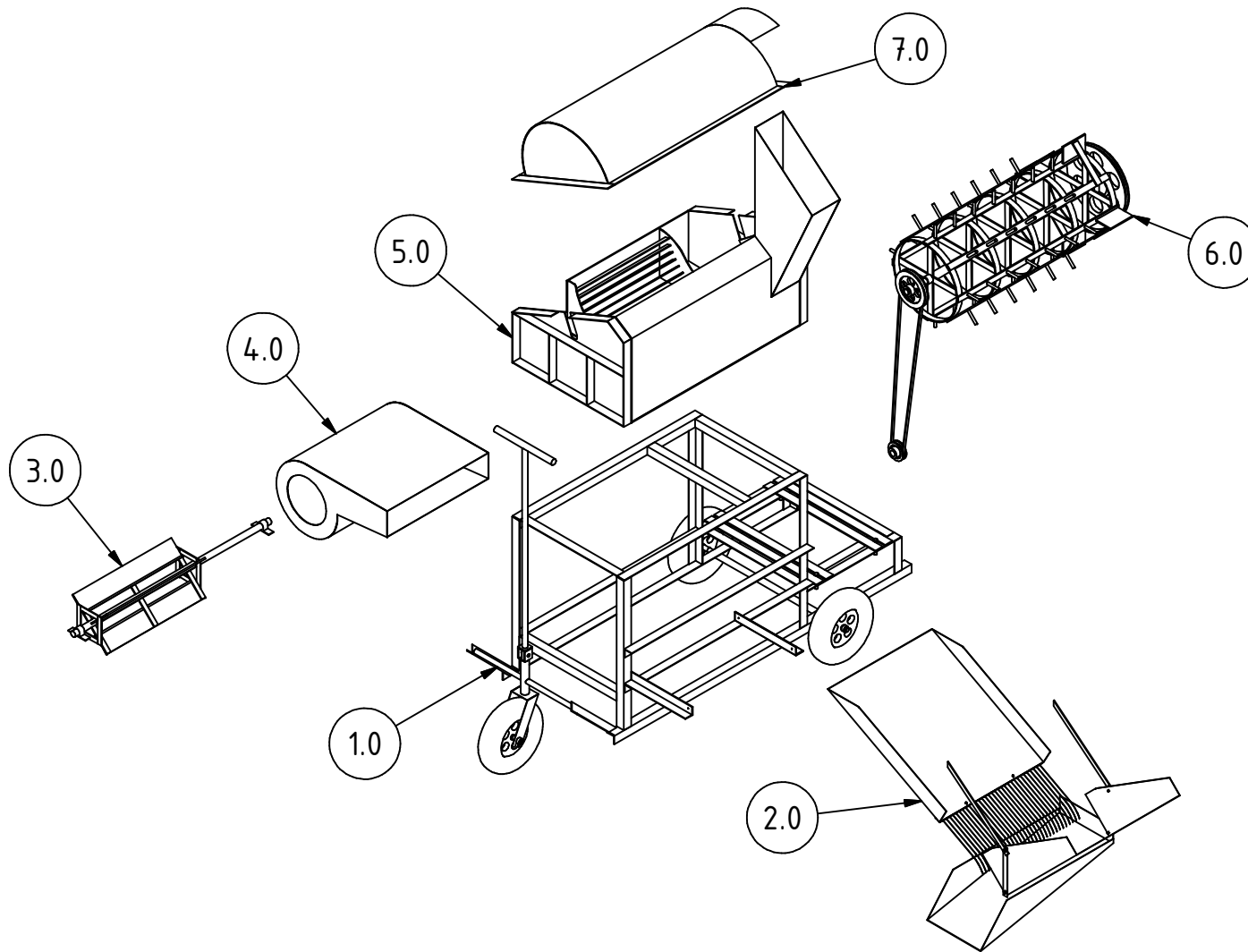


Note: All units in mm.

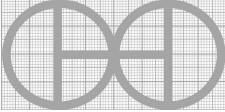
PROJECT Power Thresher for rice and wheat	CREATED BY J. Zeron	APPROVED BY A. Morillo	DATE 30/08/2021	VERSION 1.0
PART NAME	FILE NAME pac_ptp_power-thresher-for-paddy-and-others.iam			POS A1
3d views				
DEVELOPED BY	REDESIGNED BY	DOC. TYPE	MATERIAL	QUANTITY
		Assembly		
Practical Action	OHO e.V.	LICENCE CC-BY-SA 4.0	SCALE 1:25	SHEET 1 /43



PROJECT Power Thresher for rice and wheat		CREATED BY J. Zeron	APPROVED BY A. Morillo	DATE 30/08/2021	VERSION 1.0
PART NAME Exploded 3d view		FILE NAME pac_ptp_power-thresher-for-paddy-and-others.ipn			POS A2
DEVELOPED BY Practical Action	REDESIGNED BY OHO e.V.	DOC. TYPE Assembly	MATERIAL	LICENCE CC-BY-SA 4.0	QUANTITY SHEET 2 /43
			SCALE 1:25		

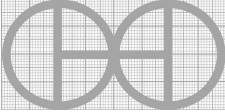
Parts list

POS	QTY	PART NAME	FILE NAME	PART TYPE	SPECIFICATIONS	SHEET
A1	-	3d views	pac_ptp_power-thresher-for-paddy-and-others.iam	-	-	1
A2	-	Exploded 3d view	pac_ptp_power-thresher-for-paddy-and-others.ipn	-	-	2
B1	-	Parts list	pac_ptp_power-thresher-for-paddy-and-others.csv	-	-	3-5
1.0	1	Frame	Frame.ipn	-	-	6
1.1	4	Angle A	-	Production	Steel A36 angle 38x38x3x676mm	-
1.2	2	Angle B	-	Production	Steel A36 angle 38x38x3x149mm	-
1.3	6	Angle C	-	Production	Steel A36 angle 38x38x3x508mm	-
1.4	4	Angle D	-	Production	Steel A36 angle 38x38x3x953mm	-
1.5	2	Angle E	Angle E.ipt	Production	Steel A36 angle 38x38x3x1554mm	7
1.6	4	Angle F	-	Production	Steel A36 angle 38x38x3x492mm	-
1.7	2	Angle G	-	Production	Steel A36 angle 38x38x3x319mm	-
1.8	4	Angle H	-	Production	Steel A36 platen 38x5x584mm	-
1.9	4	Bolt	-	Buy	Bolt M13x35 with nut	-
1.10	2	Angle I	Angle I.ipt	Production	Steel A36 angle 30x30x3mm	8
1.11	2	Rod tire A	-	Production	Steel A36 hardened 20x445mm	-
1.12	2	Sheet tire A	Sheet tire A.ipt	Production	Steel C45 gauge 0.75mm	9
1.13	1	Sheet tire B	-	Production	Steel C45 gauge 0.75mm 58x84mm	-
1.14	1	Frame shaft A	Frame shaft A.ipt	Production	Steel C45 hardened bar 25x100mm	10
1.15	1	Frame shaft B	Frame shaft B.ipt	Production	Steel C45 hardened bar 25x804mm	11
1.16	4	Nut A	-	Standard	DIN 431 nut 16mm	-
1.17	3	Tire	-	Buy	Tire 80x300mm	-
1.18	1	Rod tire B	Rod tire B.ipt	Production	Steel C45 hardened bar 32x203mm	12
1.19	2	Platen handle A	Platen handle A.ipt	Production	Steel A36 platen 38x5x45mm	13
1.20	1	Platen handle B	-	Production	Steel A36 platen 38x5x38mm	-
1.21	1	Pin rod	-	Production	Steel A36 bar 12x50mm	-
1.22	1	Bar handle A	-	Production	Steel C45 bar 20x911mm	-
1.23	1	Bar handle B	-	Production	Steel C45 bar 25x301mm	-

PROJECT Power Thresher for rice and wheat		CREATED BY J. Zeron		APPROVED BY A. Morillo		DATE 30/08/2021		VERSION 1.0	
PART NAME Parts list			FILE NAME pac_ptp_power-thresher-for-paddy-and-others.csv					POS B1	
DEVELOPED BY Practical Action		REDESIGNED BY  OHO e.V.		DOC. TYPE Parts list		MATERIAL		QUANTITY	
				LICENCE CC-BY-SA 4.0		SCALE		SHEET 3 /43	

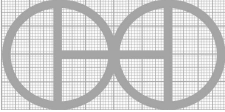
Parts list

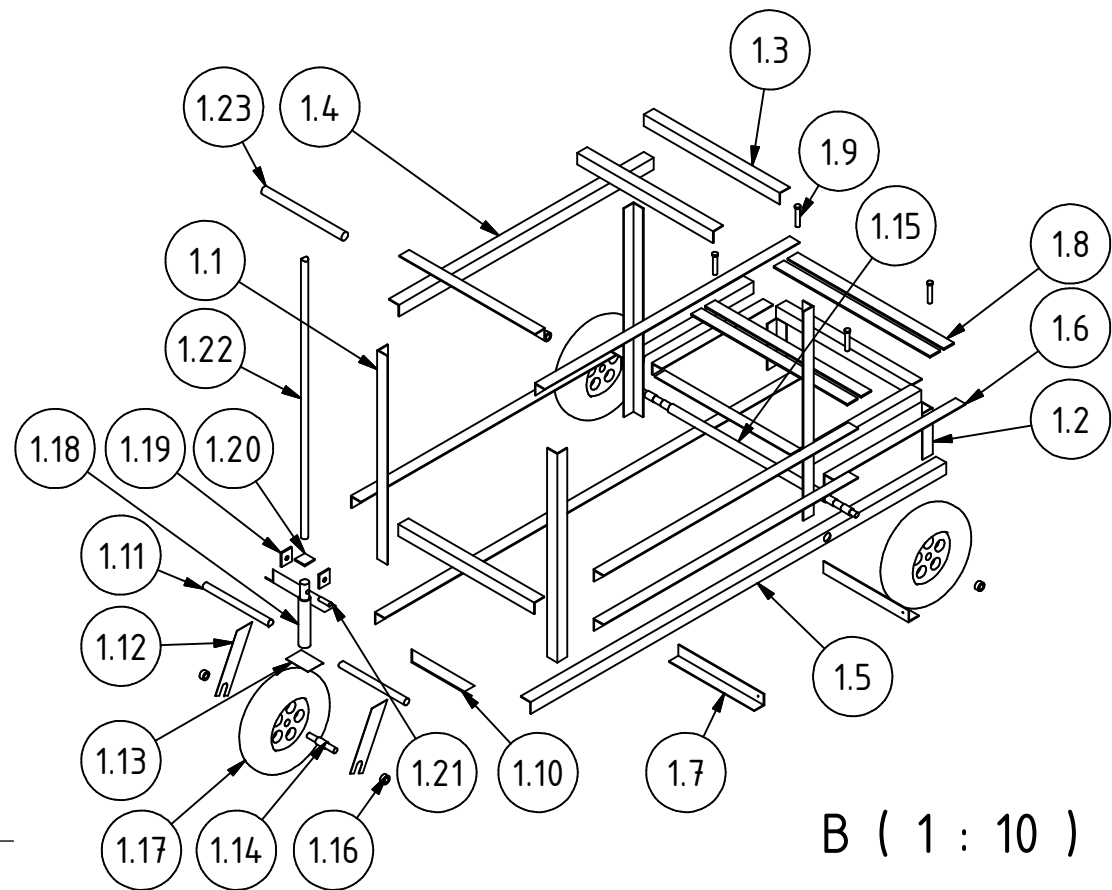
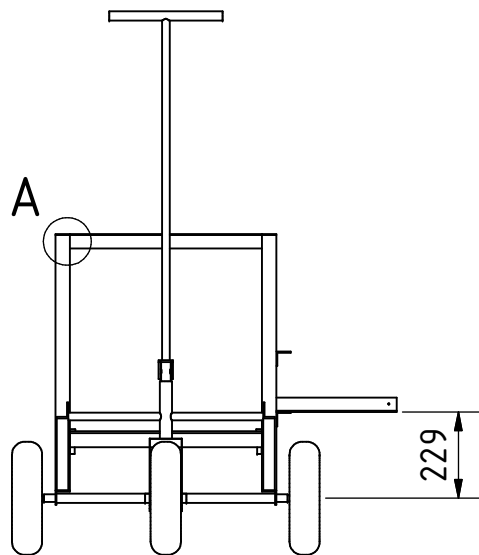
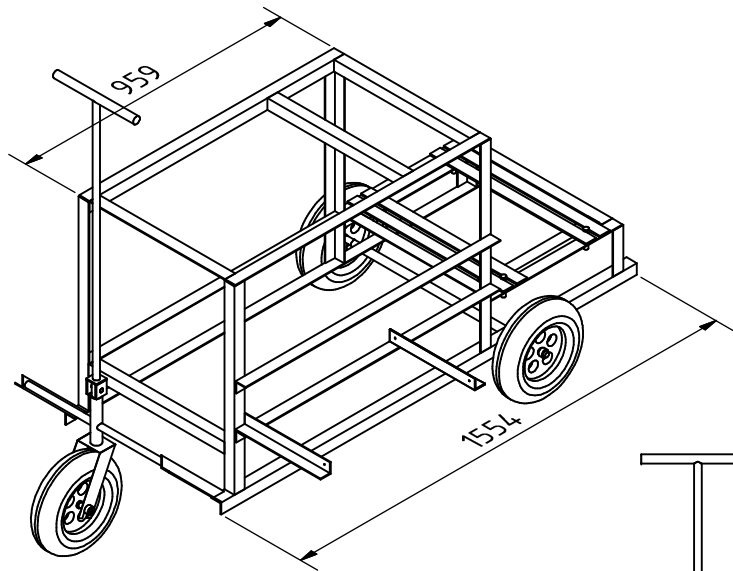
POS	QTY	PART NAME	FILE NAME	PART TYPE	SPECIFICATIONS	SHEET
2.0	1	Tray system	Tray system.ipn	-	-	14
2.1	1	Sheet	Sheet.ipt	Production	Steel C45 0.75mm	15
2.2	1	Flatbar	Flatbar.ipt	Production	Steel A36 platen 25x5x538mm	16
2.3	31	Wire	-	Buy	Wire gauge #8 4x250mm	-
2.4	1	Delivery chute	Delivery chute.ipt	Production	Steel C45 0.75mm	17
2.5	1	Dust tray	Dust tray.ipt	Production	Steel C45 0.75mm	18
2.6	2	Flat bar dust tray A	Flat bar dust tray A.ipt	Production	Steel A36 platen 3mm	19
2.7	2	Flat bar dust tray B	Flat bar dust tray B.ipt	Production	Steel A36 platen 3mm	20
2.8	4	Rivet	-	Buy	Rivet 3mm	-
2.9	2	Screw	-	Standard	DIN 1207 M3.5x5mm	-
3.0	1	Blower fan	Blower fan.ipn	-	-	21
3.1	1	Blower shaft	-	Production	Steel A36 bar 25x1025mm	-
3.2	12	Flat bar A	Flat bar A.ipt	Production	Steel A36 platen 19x5x114mm	-
3.3	4	Blade	Blade.ipt	Production	Steel C45 0.75mm	22
3.4	4	Flat bar B	-	Production	Steel A36 platen 19x5x127mm	-
3.5	4	Flat bar C	-	Production	Steel A36 platen 19x5x89mm	-
3.6	2	Pillow block A	-	Buy	Pillow block bearing 25mm bore diameter, cast iron	-
4.0	1	Blower cover	Blower cover.ipn	-	-	23
4.1	1	Cover A	Cover A.ipt	Production	Steel C45 0.75mm	24
4.2	1	Cover B	-	Production	Steel C45 0.75x262x527mm	-
4.3	1	Side sheet A	Side sheet A.ipt	Production	Steel C45 2mm	25
4.4	1	Side sheet B	Side sheet B.ipt	Production	Steel C45 2mm	26
5.0	1	Lower Concave	Lower Concave.ipn	-	-	27
5.1	1	Bottom cover	Bottom cover.ipt	Production	Steel C45 3mm	28
5.2	2	Side cover	Side cover.ipt	Production	Steel C45 3mm	29
5.3	4	Side platen A	-	Production	Steel A36 platen 38x3x578xmm	-
5.4	2	Side platen B	-	Production	Steel A36 platen 38x3x379xmm	-
5.5	6	Side platen C	-	Production	Steel A36 platen 38x3x229xmm	-
5.6	4	Side platen D	-	Production	Steel A36 platen 38x3x222xmm	-
5.7	2	Side platen E	-	Production	Steel A36 platen 38x3x102xmm	-
5.8	1	Back cover	Back cover.ipt	Production	Steel C45 3mm	30

PROJECT Power Thresher for rice and wheat		CREATED BY J. Zeron	APPROVED BY A. Morillo	DATE 30/08/2021	VERSION 1.0
PART NAME Parts list		FILE NAME pac_ptp_power-thresher-for-paddy-and-others.csv			POS B1
DEVELOPED BY Practical Action	REDESIGNED BY  OHO e.V.	DOC. TYPE Parts list	MATERIAL LICENCE CC-BY-SA 4.0	SCALE	QUANTITY SHEET 4 /43

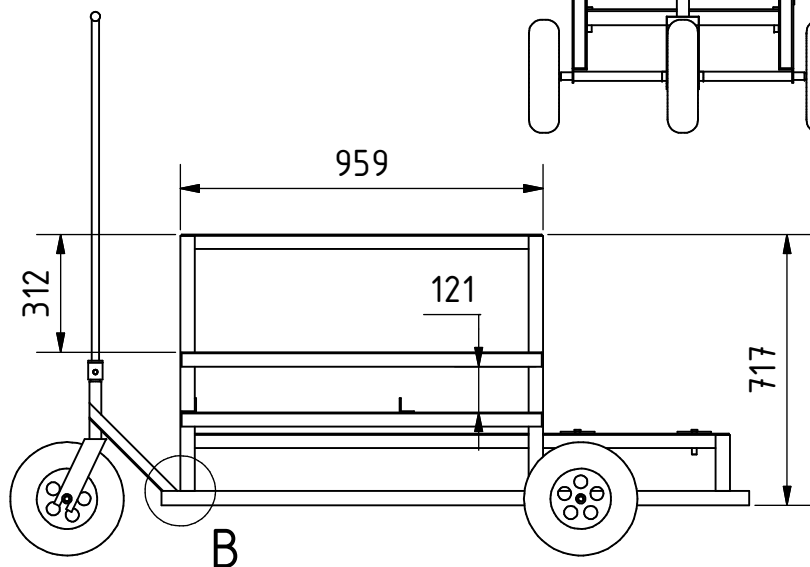
Parts list

POS	QTY	PART NAME	FILE NAME	PART TYPE	SPECIFICATIONS	SHEET
5.9	1	Front cover	Front cover.ipt	Production	Steel C45 3mm	31
5.10	1	Straw outlet A	-	Production	Steel C45 0.75mm	-
5.11	1	Straw outlet B	-	Production	Steel C45 0.75mm	-
5.12	2	Straw outlet C	Straw outlet C.ipt	Production	Steel C45 0.75mm	32
5.13	1	Divided plate	Divided plate.ipt	Production	Steel C45 3mm	33
5.14	1	Inlet support plate	Inlet support plate.ipt	Production	Steel C45 3mm	34
5.15	16	Flat bar inlet A	-	Production	Steel A36 platen 19x5x481xmm	-
5.16	11	Flat bar inlet B	-	Production	Steel A36 platen 19x5x728xmm	-
6.0	1	Thresher cylinder	Thresher cylinder.ipn	-	-	35
6.1	1	Thresher Shaft	Thresher Shaft.ipt	Production	Steel C45 hardened bar 32mm	36
6.2	20	Thresher Flat bar A	-	Production	Steel A36 platen 19x5x155xmm	-
6.3	5	Thresher Flat bar B	Thresher Flat bar B.ipt	Production	Steel A36 platen 25x5x1052xmm	37
6.4	8	Thresher Flat bar C	-	Production	Steel A36 platen 19x5x834xmm	-
6.5	4	Thresher Flat bar D	-	Production	Steel A36 platen 176x5x115xmm	-
6.6	4	Thresher Flat bar E	-	Production	Steel A36 platen 176x5x180xmm	-
6.7	52	Rod	-	Production	Steel A36 bar 10x60mm	-
6.8	2	Pillow block B	-	Buy	Pillow block bearing 25mm bore diameter, cast iron	-
6.9	1	Pulley A	-	Buy	Bore single groove 25x305mm	-
6.10	1	Pulley B	-	Buy	Bore single groove 25x152mm	-
6.11	1	Pulley C	-	Buy	Bore single groove 25x76mm	-
6.12	3	Nut B	-	Standard	DIN 431 nut 25mm	-
6.13	1	Belt	-	Buy	Belt 10mm DIN7721 length 776mm	-
7.0	1	Upper concave	Upper concave.ipn	-	-	38
7.1	1	Top cover upper	Top cover upper.ipt	Production	Steel C45 2.5mm	39
7.2	2	Side cover upper	Side cover upper.ipt	Production	Steel C45 2mm	40
7.3	1	Out sheet	Out sheet.ipt	Production	Steel C45 2mm	41
7.4	2	Platen A	-	Production	Steel A36 platen 38x3x883xmm	-
7.5	2	Platen B	-	Production	Steel A36 platen 38x3x541xmm	-
7.6	6	Spiral sheet A	Spiral sheet A.ipt	Production	Steel C45 2mm	42
7.7	1	Spiral sheet B	Spiral sheet B.ipt	Production	Steel C45 2mm	43

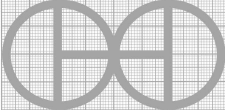
PROJECT Power Thresher for rice and wheat		CREATED BY J. Zeron	APPROVED BY A. Morillo	DATE 30/08/2021	VERSION 1.0
PART NAME Parts list		FILE NAME pac_ptp_power-thresher-for-paddy-and-others.csv			POS B1
DEVELOPED BY Practical Action	REDESIGNED BY  OHO e.V.	DOC. TYPE Parts list	MATERIAL LICENCE CC-BY-SA 4.0	SCALE	QUANTITY SHEET 5 /43

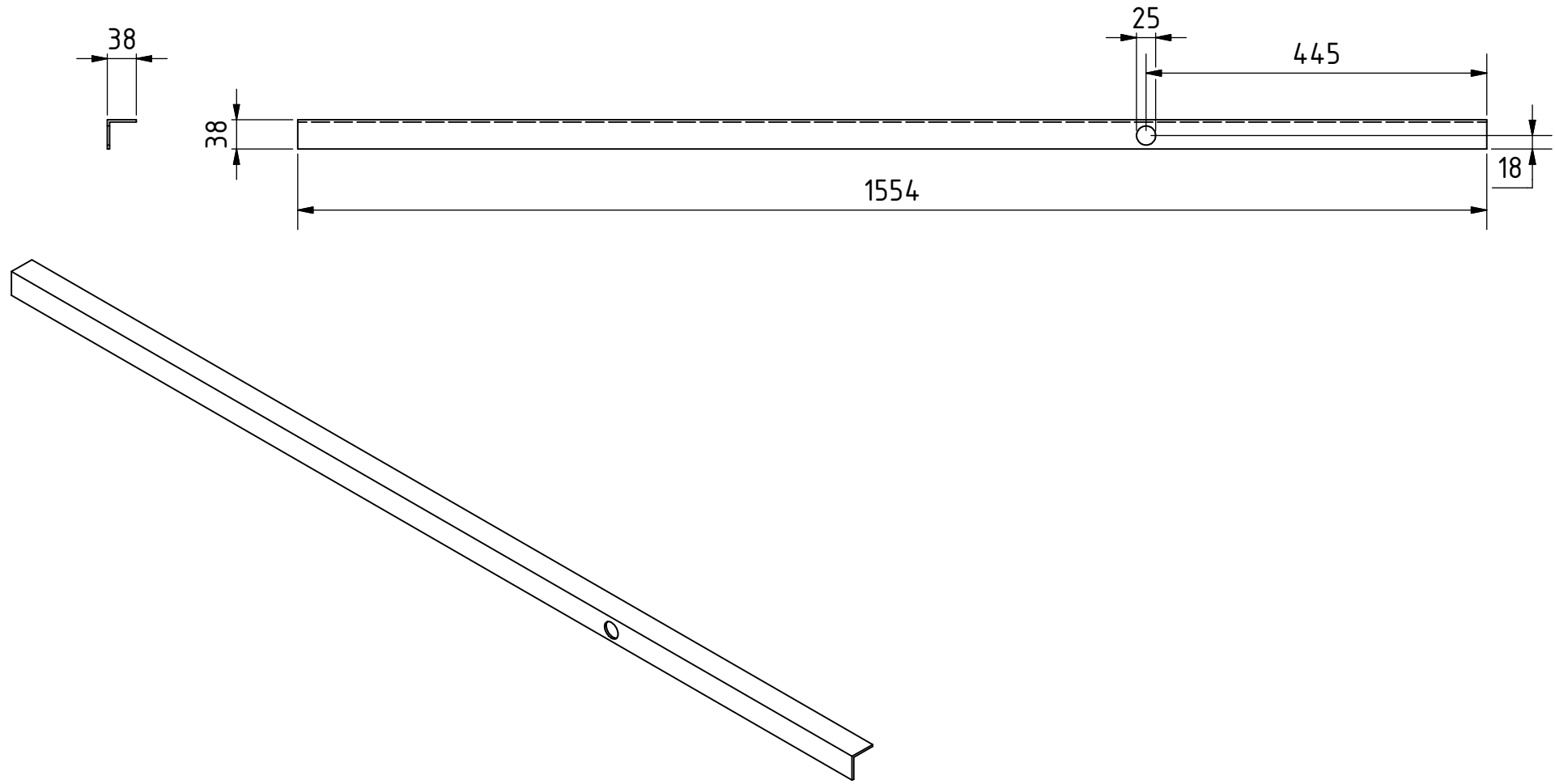


A (1 : 10)

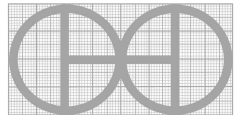


All metal parts are welded.
Note: All units in mm.

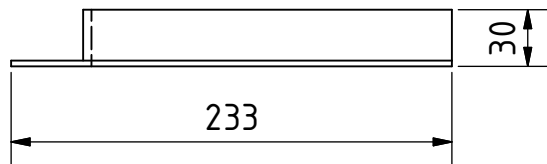
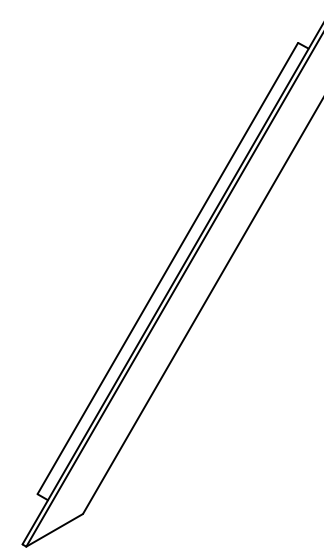
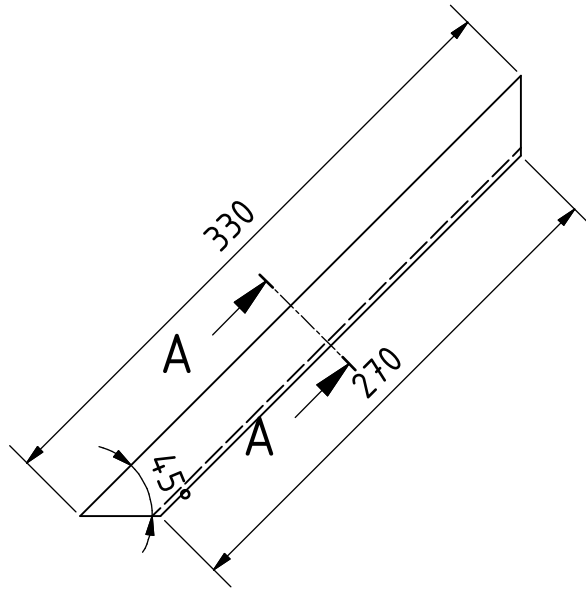
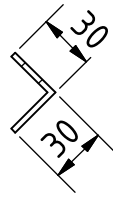
PROJECT Power Thresher for rice and wheat	CREATED BY J. Zeron	APPROVED BY A. Morillo	DATE 30/08/2021	VERSION 1.0
PART NAME Frame	FILE NAME Frame.ipn			POS 1.0
DEVELOPED BY	REDESIGNED BY 	DOC. TYPE Assembly	MATERIAL	QUANTITY 1
Practical Action	OHO e.V.	LICENCE CC-BY-SA 4.0	SCALE 1:20	SHEET 6 /43



Note: All units in mm.

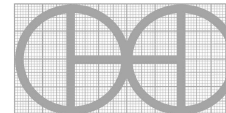
PROJECT Power Thresher for rice and wheat		CREATED BY J. Zeron		APPROVED BY A. Morillo		DATE 30/08/2021		VERSION 1.0		
PART NAME Angle E		FILE NAME Angle E.ipt							POS 1.5	
DEVELOPED BY Practical Action		REDESIGNED BY OHO e.V.		DOC. TYPE Part		MATERIAL Steel A36		QUANTITY 2		
				LICENCE CC-BY-SA 4.0		SCALE 1:8		SHEET 7 /43		

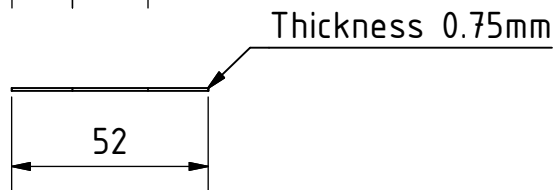
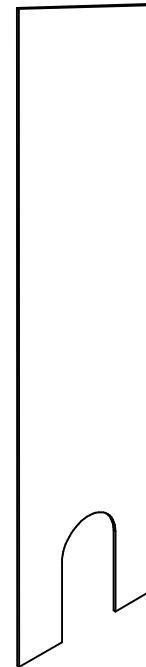
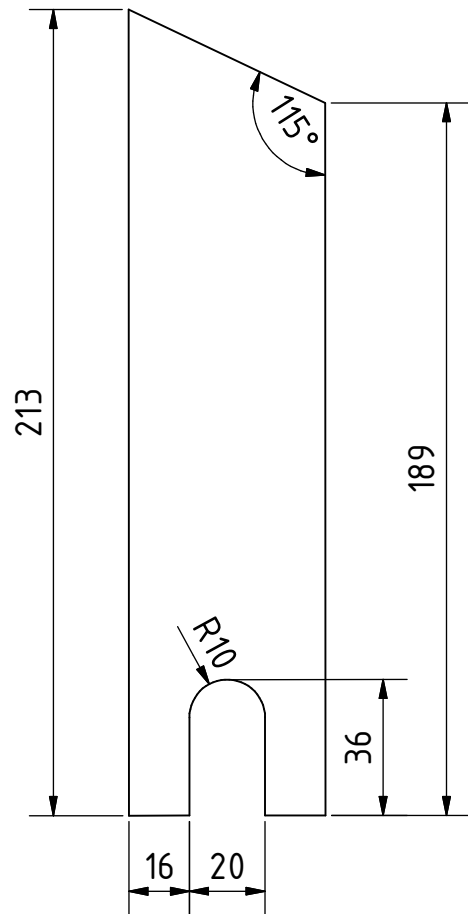
A-A (1 : 4)



Note: All units in mm.

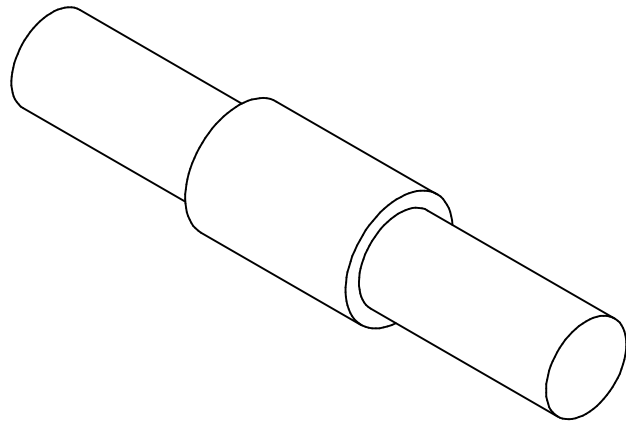
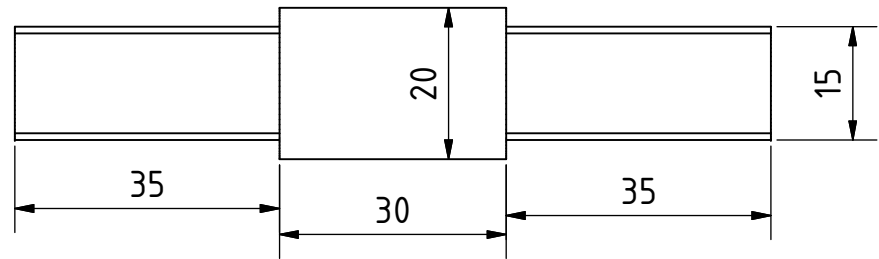
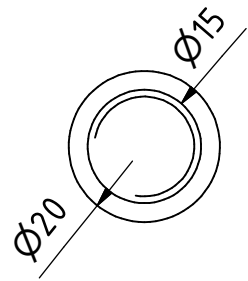
PROJECT Power Thresher for rice and wheat		CREATED BY J. Zeron	APPROVED BY A. Morillo	DATE 30/08/2021	VERSION 1.0
PART NAME Angle I		FILE NAME Angle I.ipt			POS 1.10
DEVELOPED BY Practical Action	REDESIGNED BY OHO e.V.	DOC. TYPE Part	MATERIAL Steel A36	QUANTITY 2	
		LICENCE CC-BY-SA 4.0	SCALE 1:4	SHEET 8 /43	





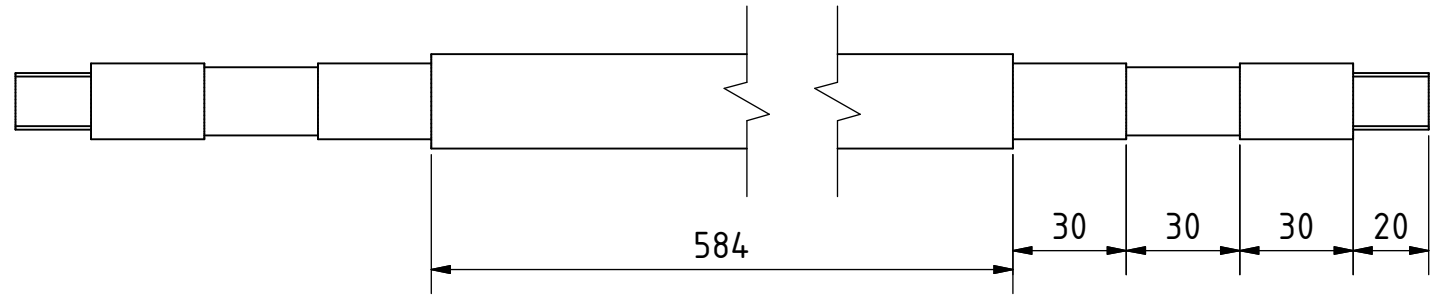
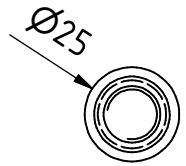
Note: All units in mm.

PROJECT Power Thresher for rice and wheat		CREATED BY J. Zeron		APPROVED BY A. Morillo		DATE 30/08/2021		VERSION 1.0	
PART NAME Sheet tire A		FILE NAME Sheet tire A.ipt						POS 1.12	
DEVELOPED BY Practical Action		REDESIGNED BY OHO e.V.		DOC. TYPE Part		MATERIAL Steel C45		QUANTITY 2	
				LICENCE CC-BY-SA 4.0		SCALE 1:2		SHEET 9 /43	

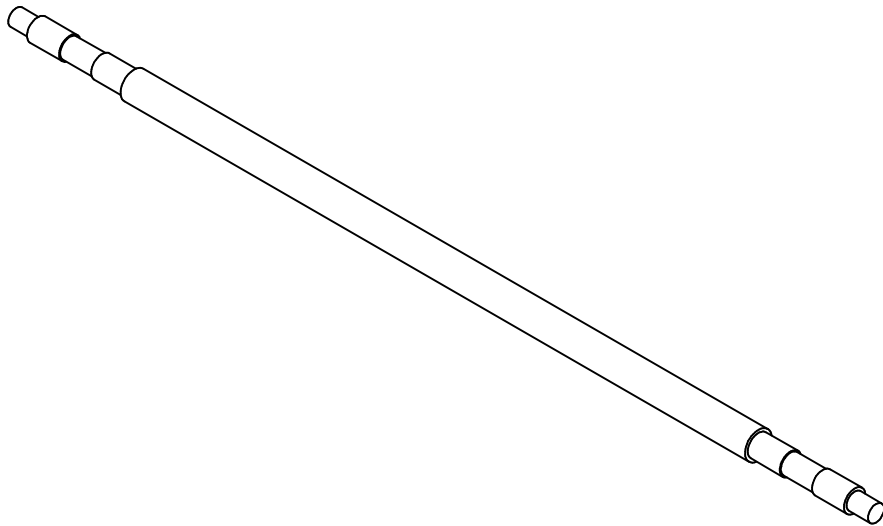


Note: All units in mm.

PROJECT Power Thresher for rice and wheat	CREATED BY J. Zeron	APPROVED BY A. Morillo	DATE 30/08/2021	VERSION 1.0
PART NAME Frame shaft A	FILE NAME Frame shaft A.ipt			POS 1.14
DEVELOPED BY Practical Action	REDESIGNED BY OHO e.V.	DOC. TYPE Part	MATERIAL Steel C45	QUANTITY 1
		LICENCE CC-BY-SA 4.0	SCALE 1:1	SHEET 10 /43

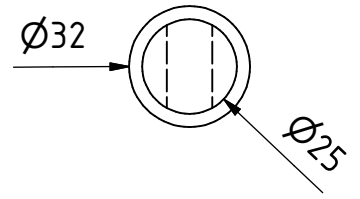
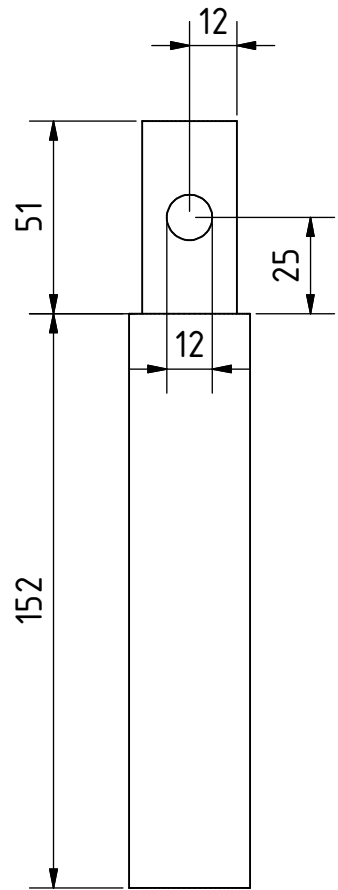


ISOMETRIC (1 : 5)



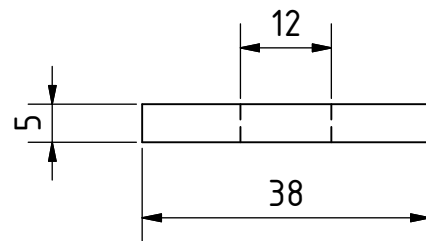
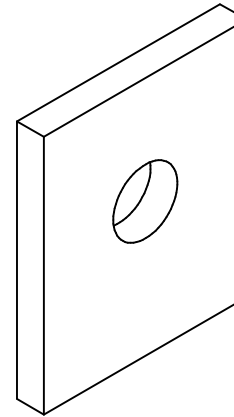
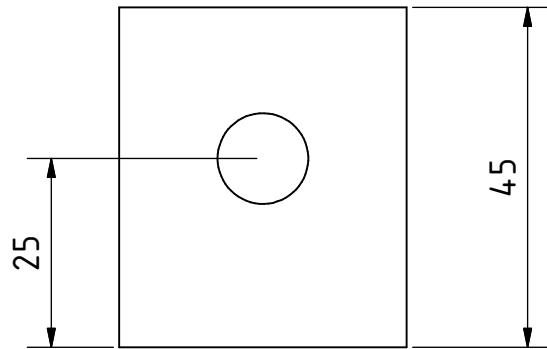
Note: All units in mm.

PROJECT Power Thresher for rice and wheat	CREATED BY J. Zeron	APPROVED BY A. Morillo	DATE 30/08/2021	VERSION 1.0
PART NAME Frame shaft B	FILE NAME Frame shaft B.ipt			POS 1.15
DEVELOPED BY Practical Action	REDESIGNED BY OHO e.V.	DOC. TYPE Part	MATERIAL Steel C45	QUANTITY 1
		LICENCE CC-BY-SA 4.0	SCALE 1:2	SHEET 11 /43



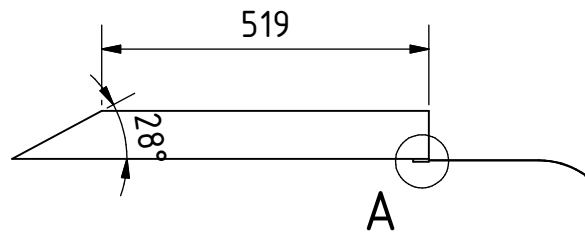
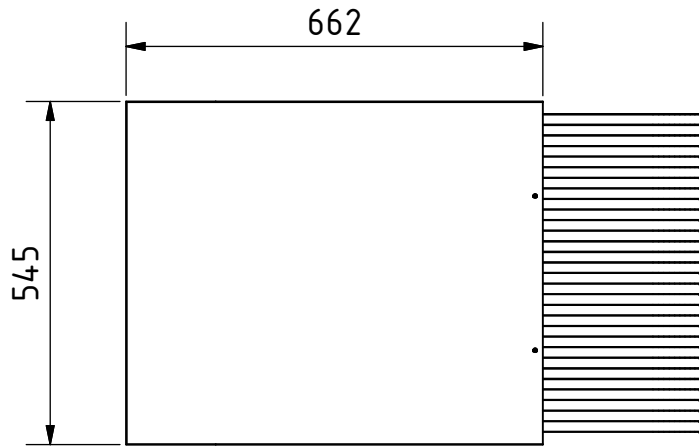
Note: All units in mm.

PROJECT Power Thresher for rice and wheat		CREATED BY J. Zeron	APPROVED BY A. Morillo	DATE 30/08/2021	VERSION 1.0
PART NAME Rod tire B		FILE NAME Rod tire B.ipt			POS 1.18
DEVELOPED BY Practical Action	REDESIGNED BY OHO e.V.	DOC. TYPE Part	MATERIAL Steel C45	QUANTITY 1	
		LICENCE CC-BY-SA 4.0	SCALE 1:2	SHEET 12 /43	

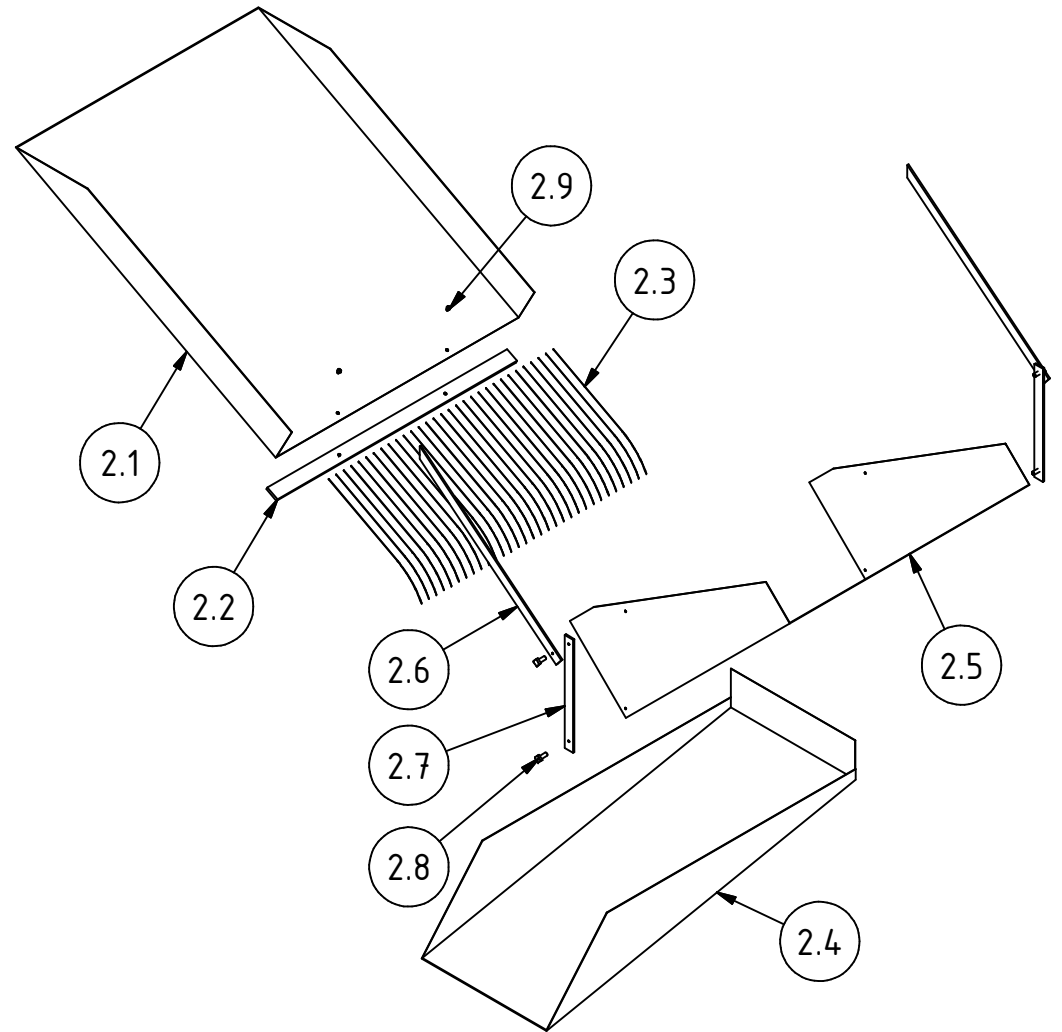
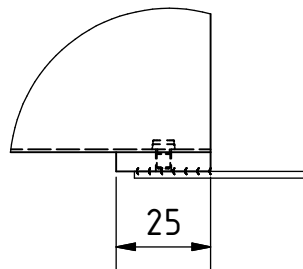


Note: All units in mm.

PROJECT Power Thresher for rice and wheat		CREATED BY J. Zeron	APPROVED BY A. Morillo	DATE 30/08/2021	VERSION 1.0
PART NAME Platen handle A		FILE NAME Platen handle A.ipt			POS 1.19
DEVELOPED BY Practical Action	REDESIGNED BY OHO e.V.	DOC. TYPE Part	MATERIAL Steel A36	QUANTITY 2	
		LICENCE CC-BY-SA 4.0	SCALE 1:1	SHEET 13 /43	

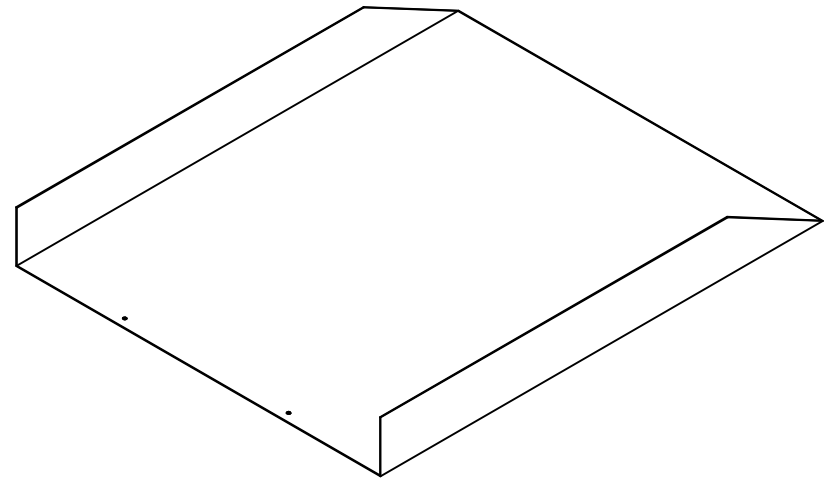
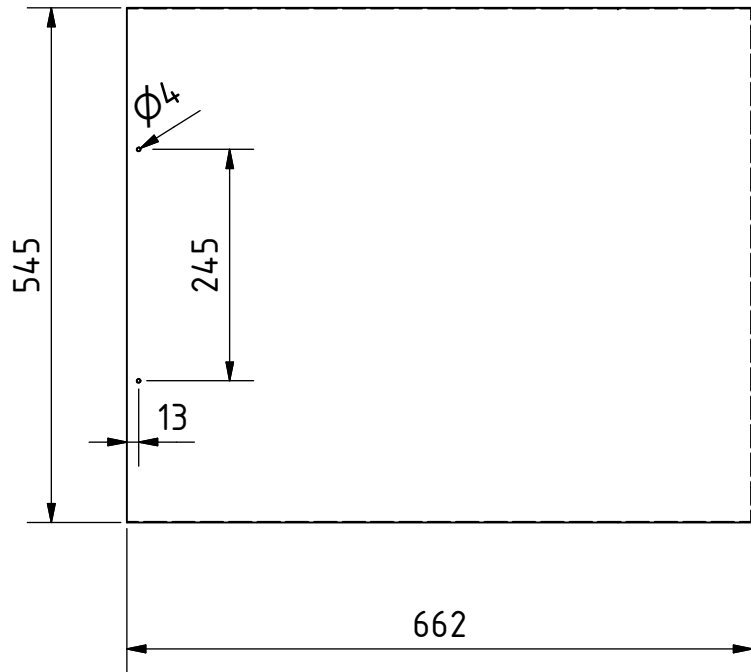
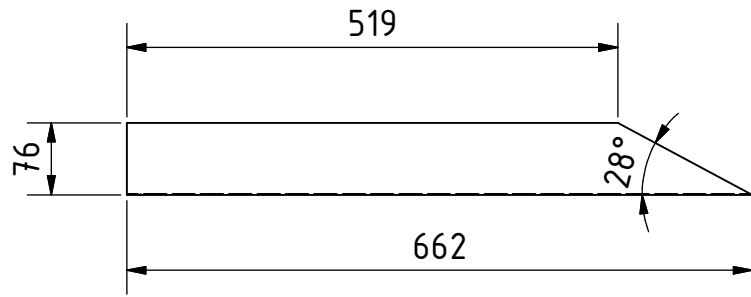


A (1 : 2)



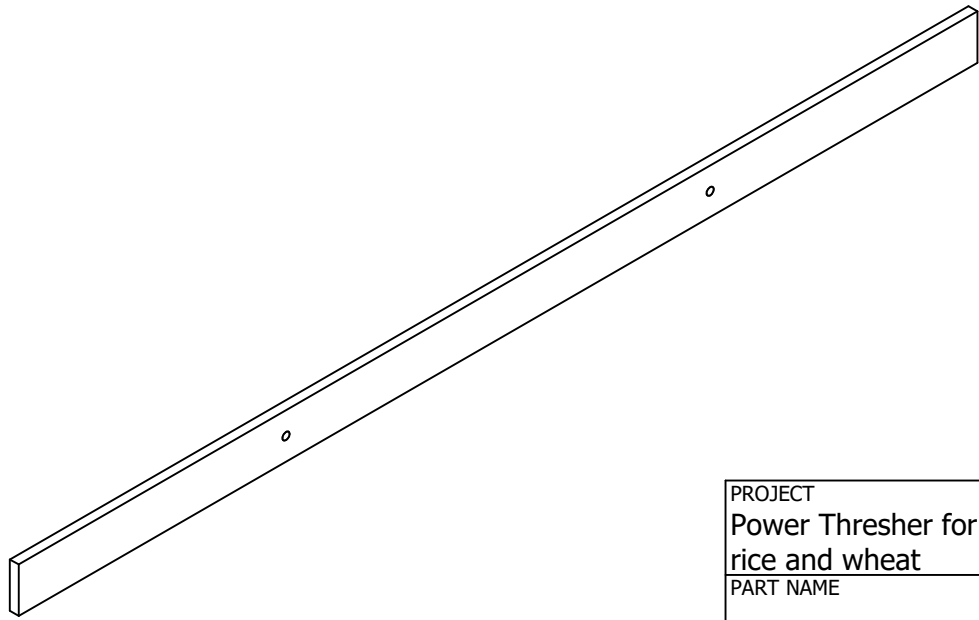
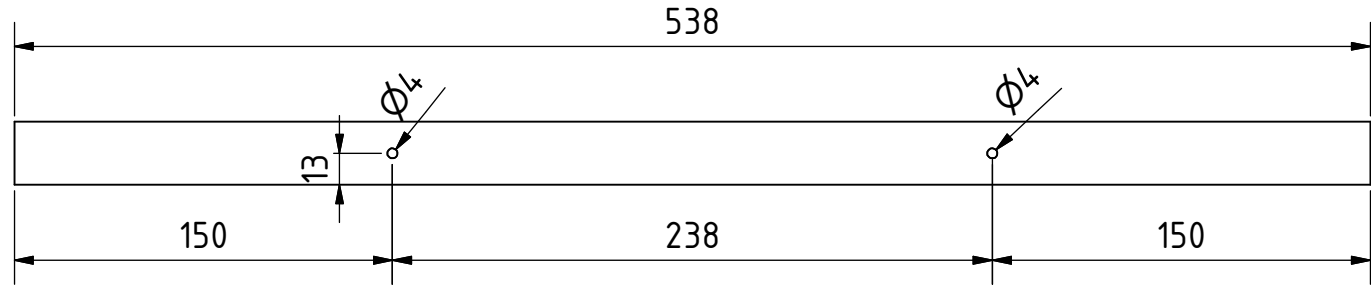
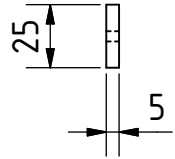
All metal parts are welded.
Note: All units in mm.

PROJECT Power Thresher for rice and wheat	CREATED BY J. Zeron	APPROVED BY A. Morillo	DATE 30/08/2021	VERSION 1.0
PART NAME Tray system	FILE NAME Tray system.ipn			POS 2.0
DEVELOPED BY Practical Action	REDESIGNED BY OHO e.V.	DOC. TYPE Assembly	MATERIAL	QUANTITY 1
		LICENCE CC-BY-SA 4.0	SCALE 1:12	SHEET 14 /43

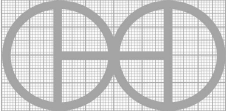


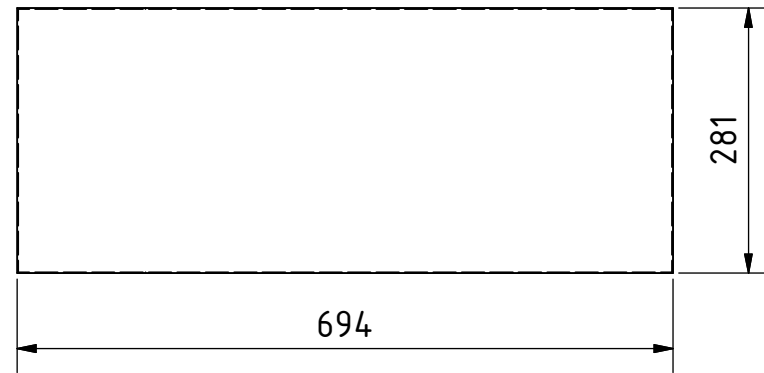
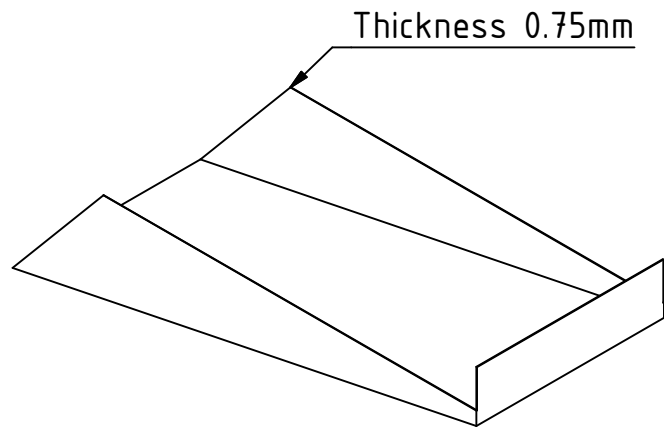
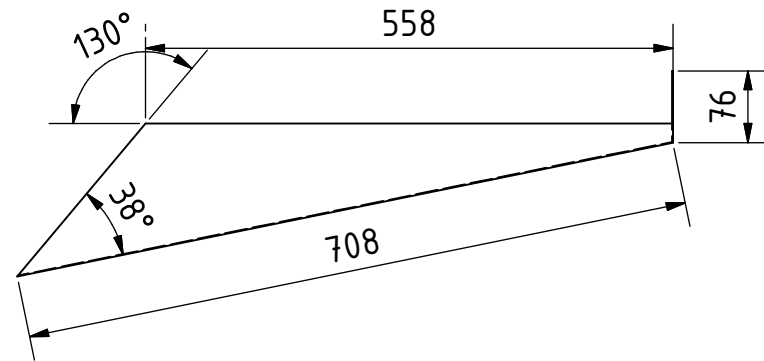
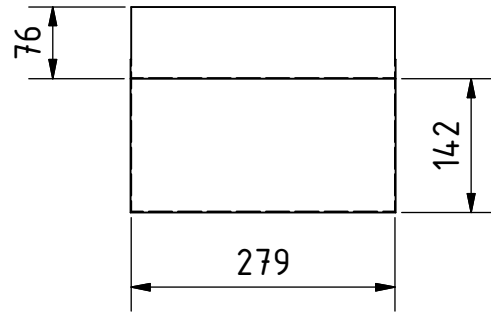
Note: All units in mm.

PROJECT Power Thresher for rice and wheat	CREATED BY J. Zeron	APPROVED BY A. Morillo	DATE 30/08/2021	VERSION 1.0
PART NAME Sheet	FILE NAME Sheet.ipt			POS 2.1
DEVELOPED BY Practical Action	REDESIGNED BY OHO e.V.	DOC. TYPE Part	MATERIAL Steel C45	QUANTITY 1
		LICENCE CC-BY-SA 4.0	SCALE 1:8	SHEET 15 /43



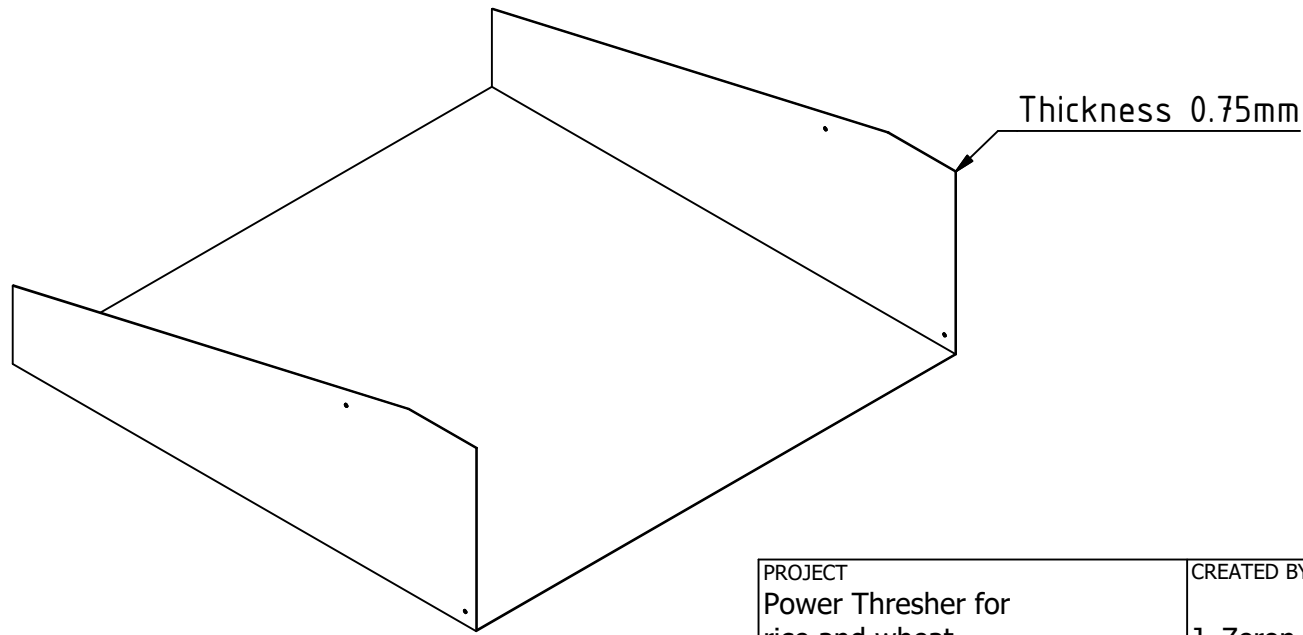
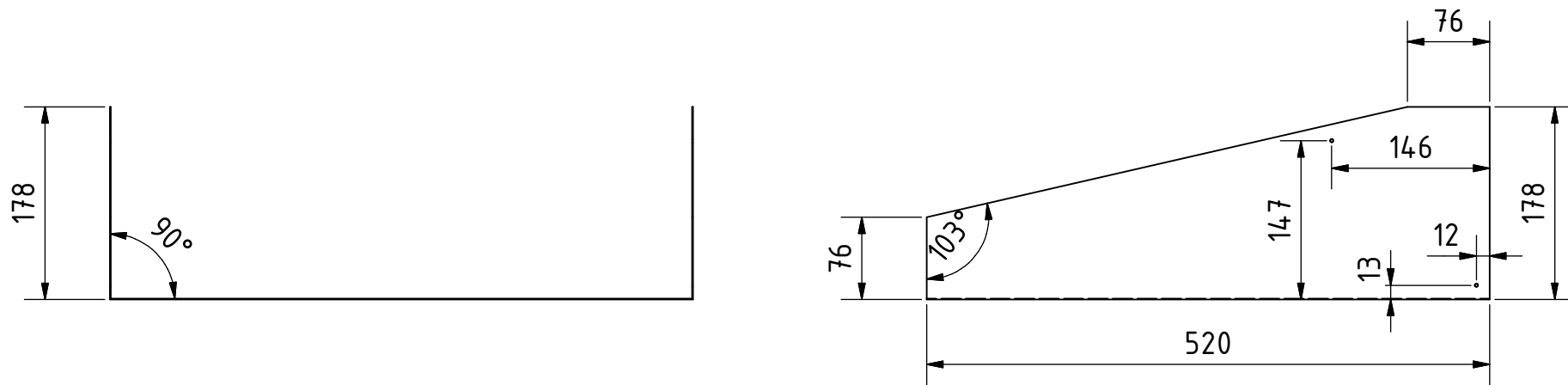
Note: All units in mm.

PROJECT Power Thresher for rice and wheat		CREATED BY J. Zeron	APPROVED BY A. Morillo	DATE 30/08/2021	VERSION 1.0
PART NAME Flatbar		FILE NAME Flatbar.ipt			POS 2.2
DEVELOPED BY	REDESIGNED BY	DOC. TYPE	MATERIAL	QUANTITY	
		Part	Steel A36	1	
Practical Action	OHO e.V.	LICENCE CC-BY-SA 4.0	SCALE 1:3	SHEET 16 /43	



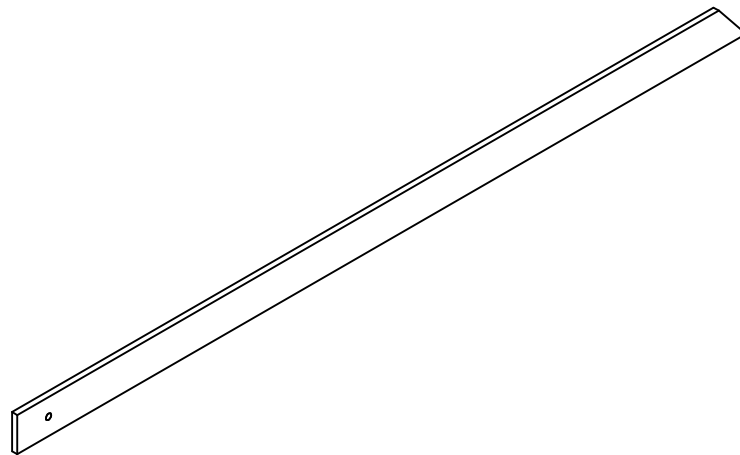
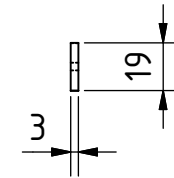
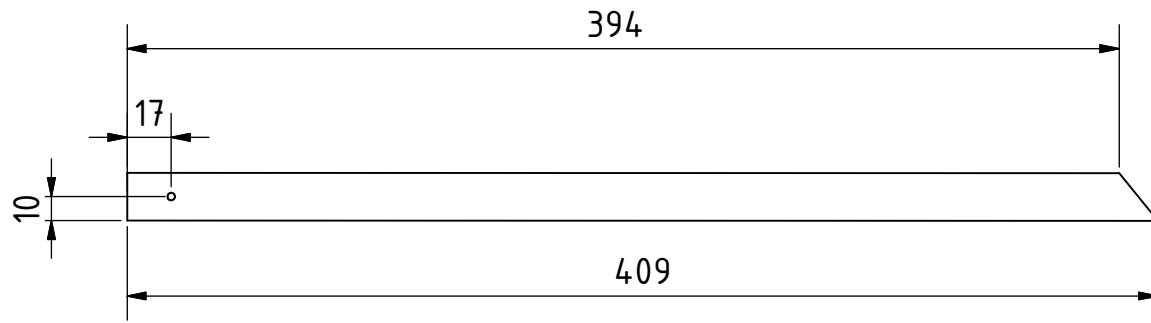
Note: All units in mm.

PROJECT Power Thresher for rice and wheat	CREATED BY J. Zeron	APPROVED BY A. Morillo	DATE 30/08/2021	VERSION 1.0
PART NAME Delivery chute	FILE NAME Delivery chute.ipt			POS 2.4
DEVELOPED BY Practical Action	REDESIGNED BY OHO e.V.	DOC. TYPE Part	MATERIAL Steel C45	QUANTITY 1
		LICENCE CC-BY-SA 4.0	SCALE 1:8	SHEET 17 /43



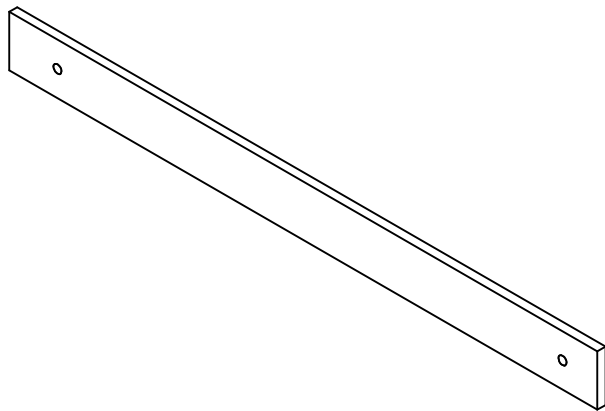
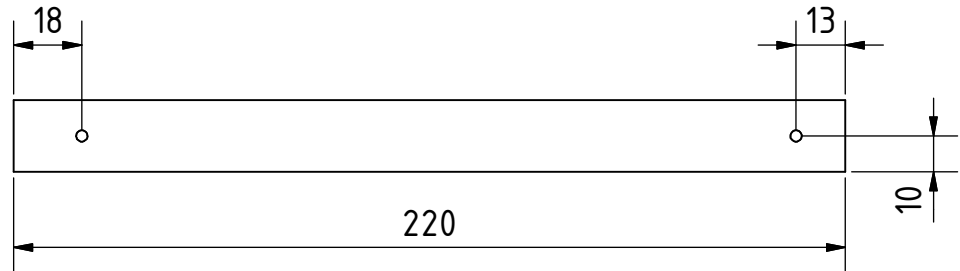
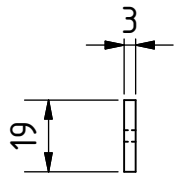
Note: All units in mm.

PROJECT Power Thresher for rice and wheat		CREATED BY J. Zeron	APPROVED BY A. Morillo	DATE 30/08/2021	VERSION 1.0
PART NAME Dust tray		FILE NAME Dust tray.ipt			POS 2.5
DEVELOPED BY Practical Action	REDESIGNED BY OHO e.V.	DOC. TYPE Part	MATERIAL Steel C45	QUANTITY 1	
		LICENCE CC-BY-SA 4.0	SCALE 1:6	SHEET 18 /43	



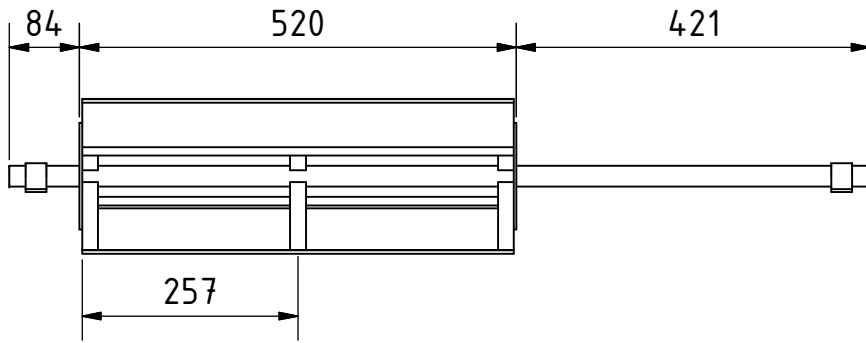
Note: All units in mm.

PROJECT Power Thresher for rice and wheat	CREATED BY J. Zeron	APPROVED BY A. Morillo	DATE 30/08/2021	VERSION 1.0
PART NAME Flat bar dust tray A	FILE NAME Flat bar dust tray A.ipt			POS 2.6
DEVELOPED BY Practical Action	REDESIGNED BY OHO e.V.	DOC. TYPE Part	MATERIAL Steel A36	QUANTITY 2
		LICENCE CC-BY-SA 4.0	SCALE 1:3	SHEET 19 /43

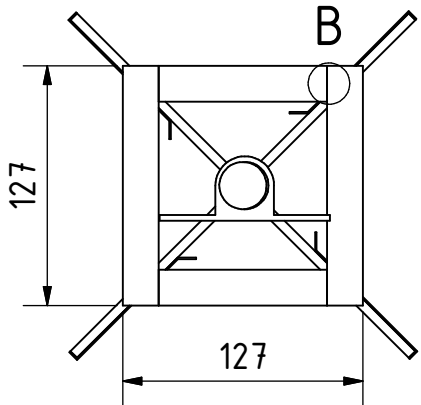


Note: All units in mm.

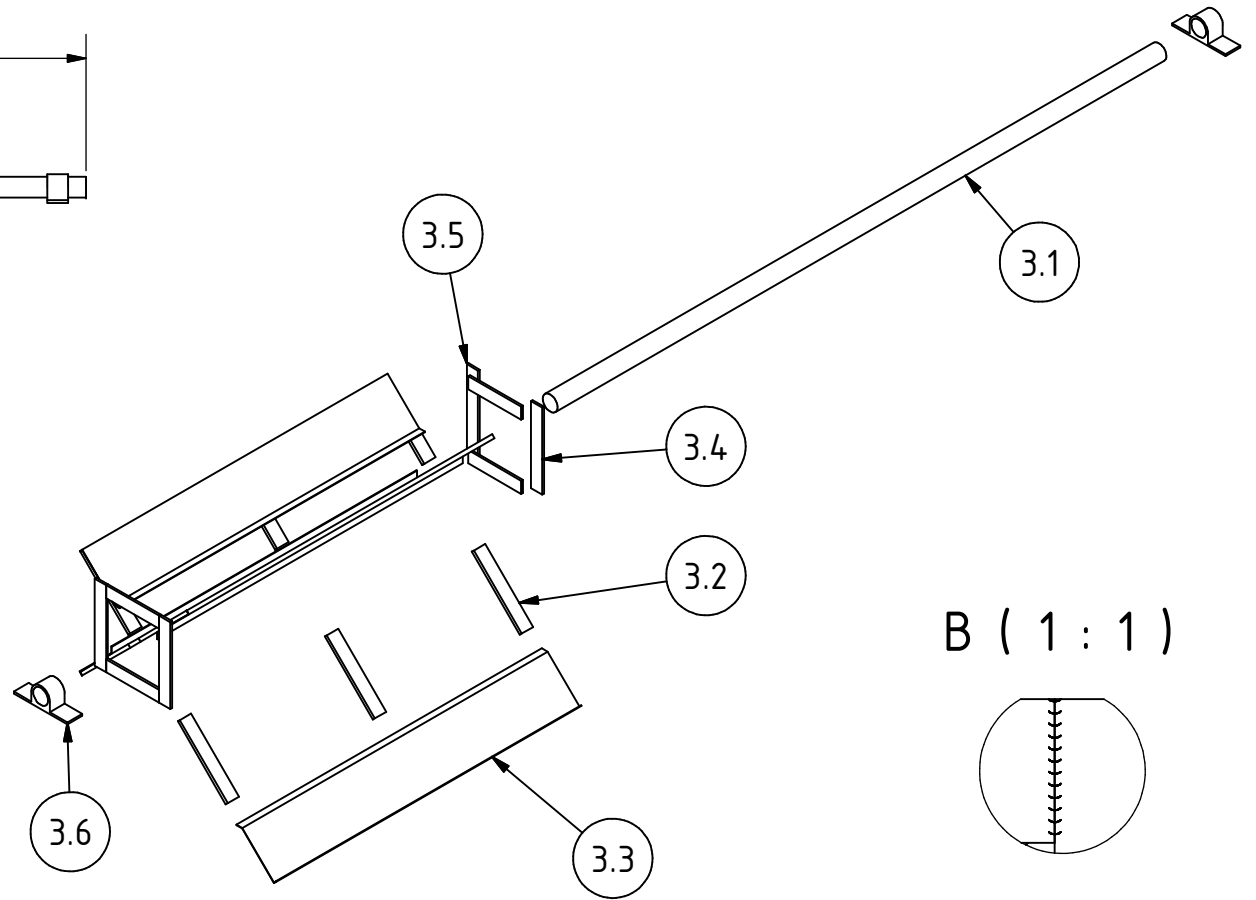
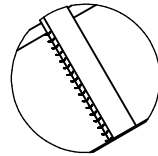
PROJECT Power Thresher for rice and wheat		CREATED BY J. Zeron	APPROVED BY A. Morillo	DATE 30/08/2021	VERSION 1.0
PART NAME Flat bar dust tray B		FILE NAME Flat bar dust tray B.ipt			POS 2.7
DEVELOPED BY Practical Action	REDESIGNED BY OHO e.V.	DOC. TYPE Part	MATERIAL Steel A36	QUANTITY 2	
		LICENCE CC-BY-SA 4.0	SCALE 1:2	SHEET 20 /43	



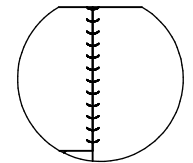
FRONT (1 : 4)



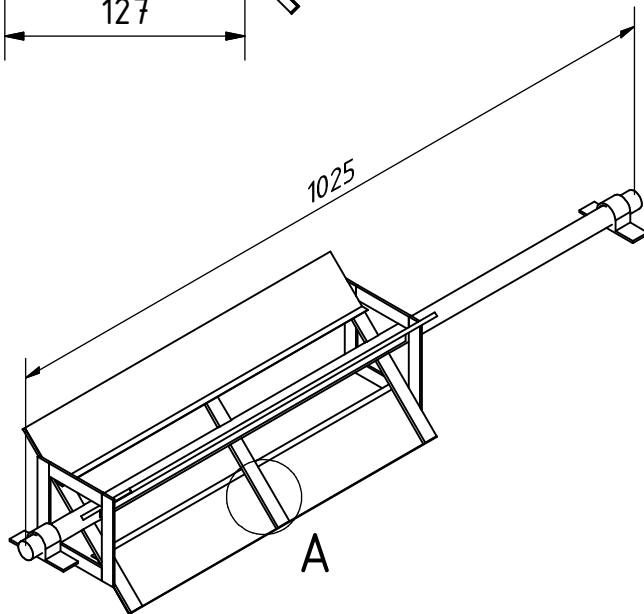
A (0,22 : 1)



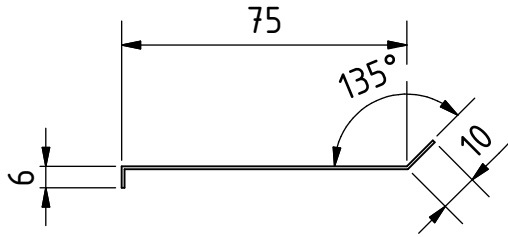
B (1 : 1)



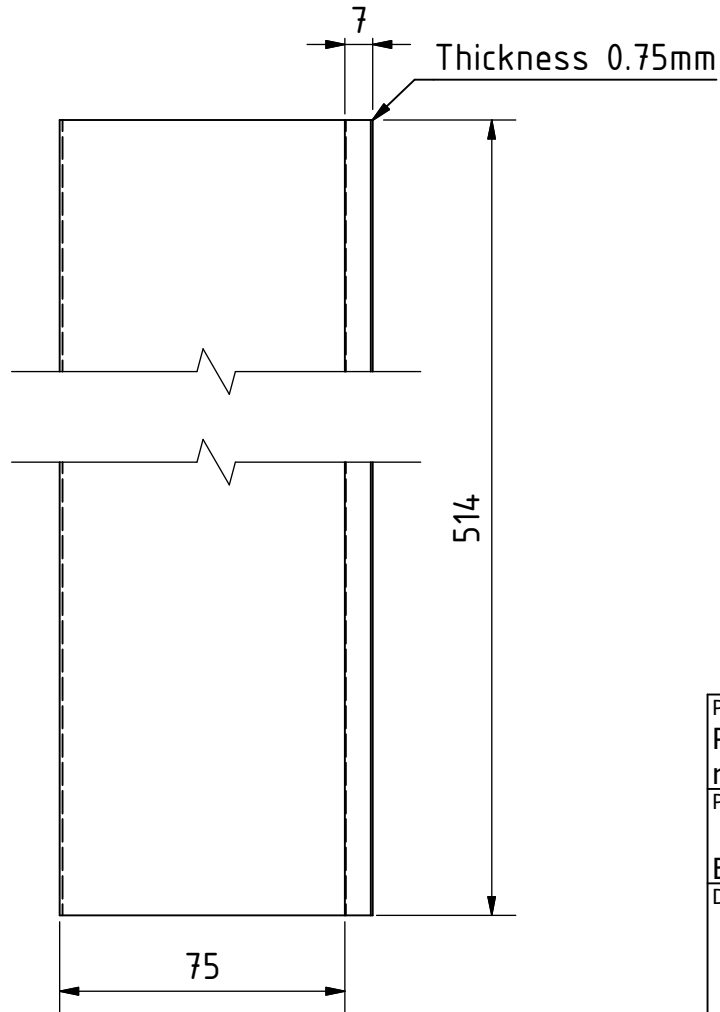
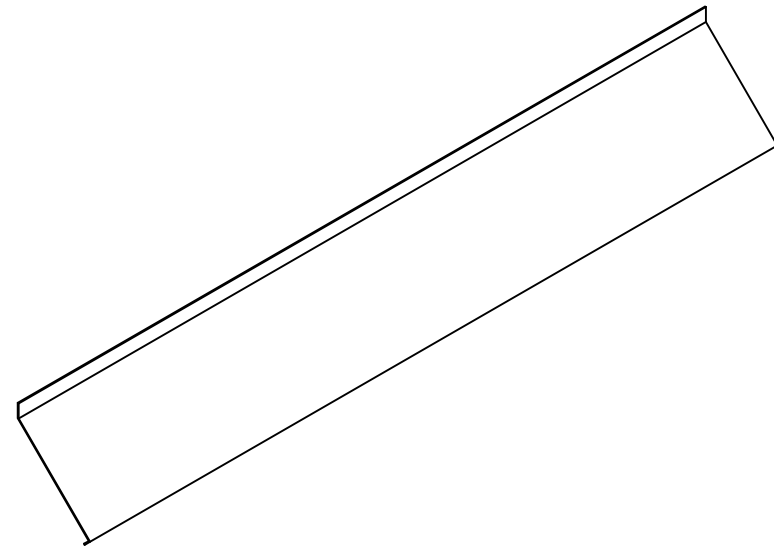
All metal parts are welded.
Note: All units in mm.



PROJECT Power Thresher for rice and wheat	CREATED BY J. Zeron	APPROVED BY A. Morillo	DATE 30/08/2021	VERSION 1.0
PART NAME Blower fan	FILE NAME Blower fan.ipn			POS 3.0
DEVELOPED BY Practical Action	REDESIGNED BY OHO e.V.	DOC. TYPE Assembly	MATERIAL	QUANTITY 1
		LICENCE CC-BY-SA 4.0	SCALE 1:9	SHEET 21 /43

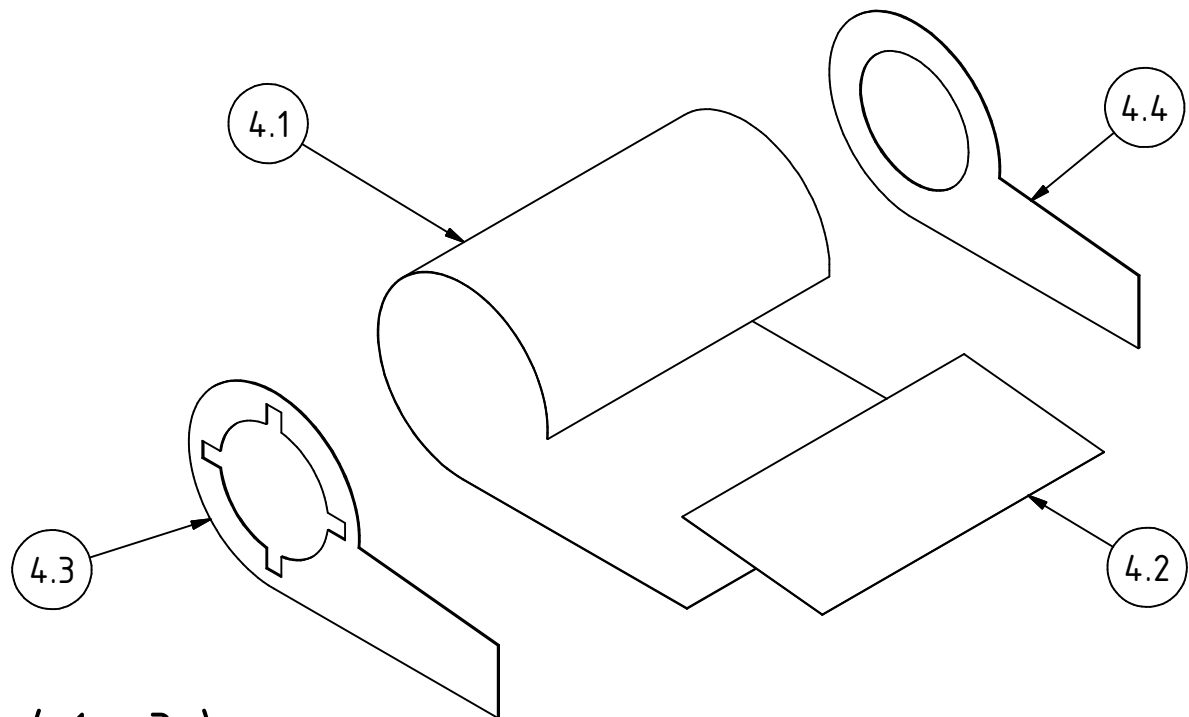
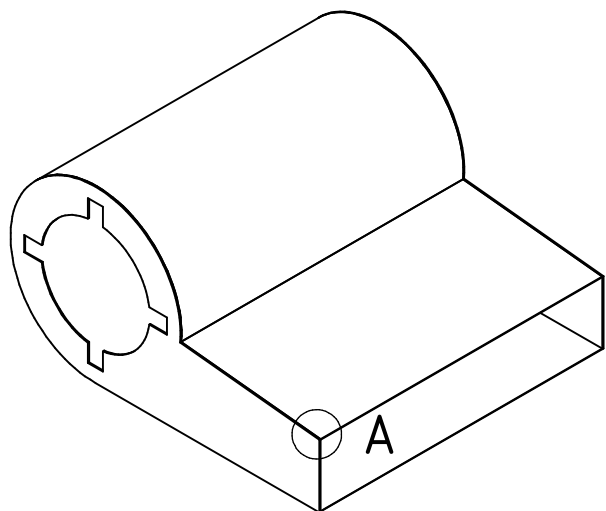
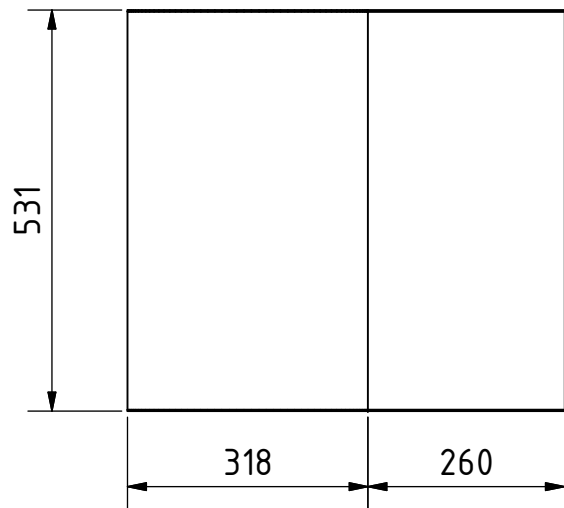
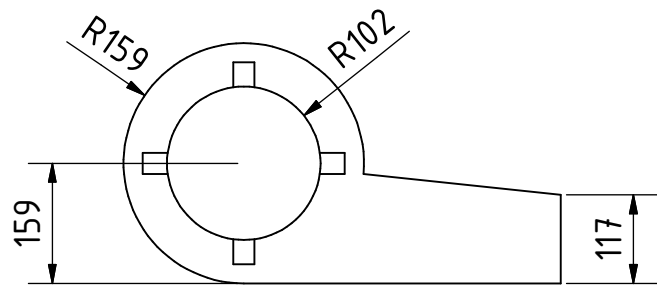


ISOMETRIC (1 : 4)

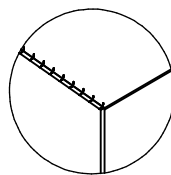


Note: All units in mm.

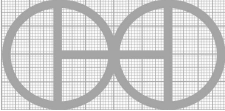
PROJECT Power Thresher for rice and wheat		CREATED BY J. Zeron	APPROVED BY A. Morillo	DATE 30/08/2021	VERSION 1.0
PART NAME Blade		FILE NAME Blade.ipt			POS 8.4
DEVELOPED BY Practical Action	REDESIGNED BY OHO e.V.	DOC. TYPE Part	MATERIAL Steel C45	QUANTITY 4	
		LICENCE CC-BY-SA 4.0	SCALE 1:2	SHEET 22 /43	

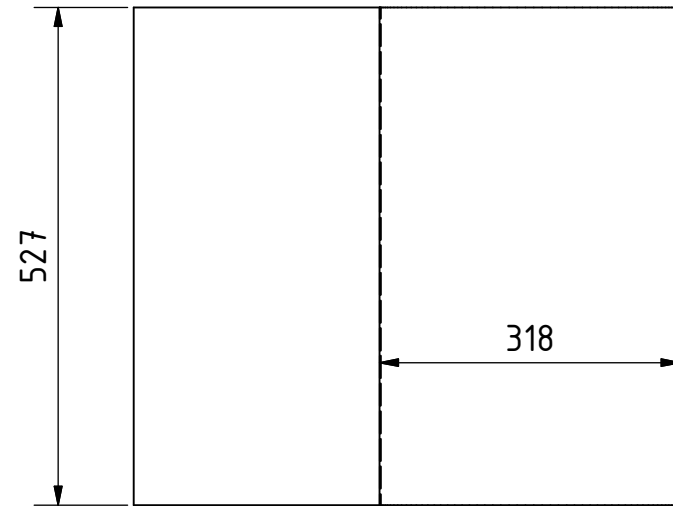
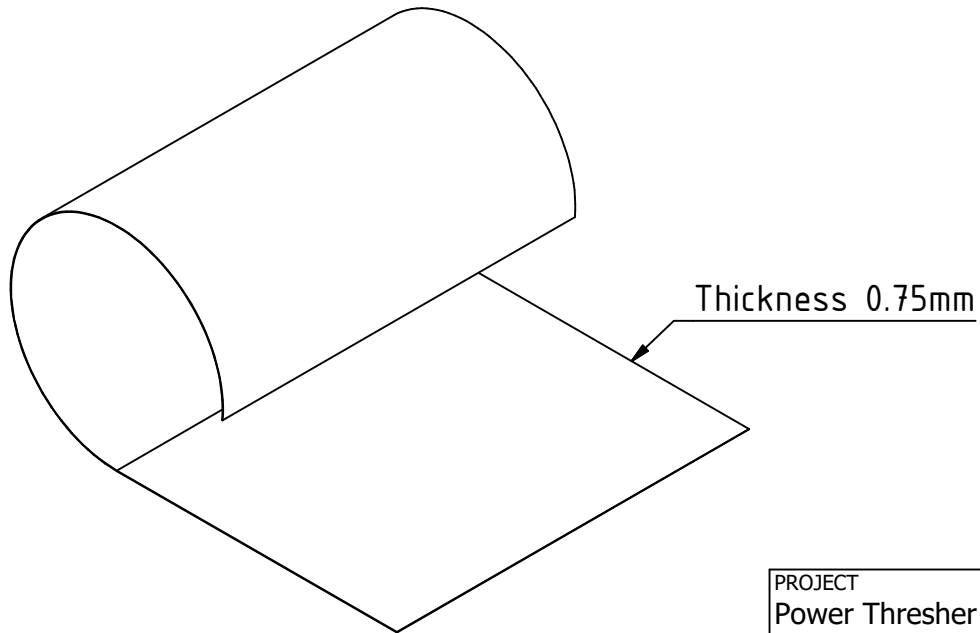
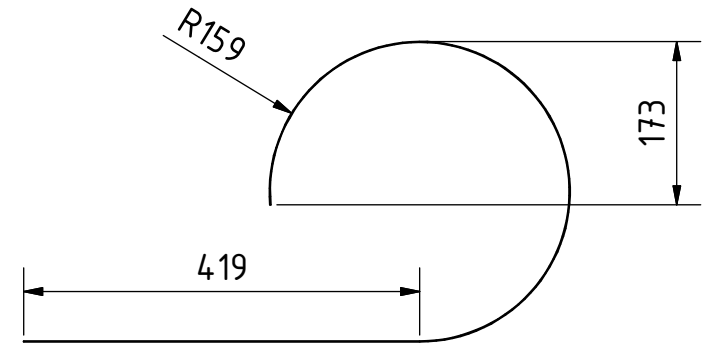
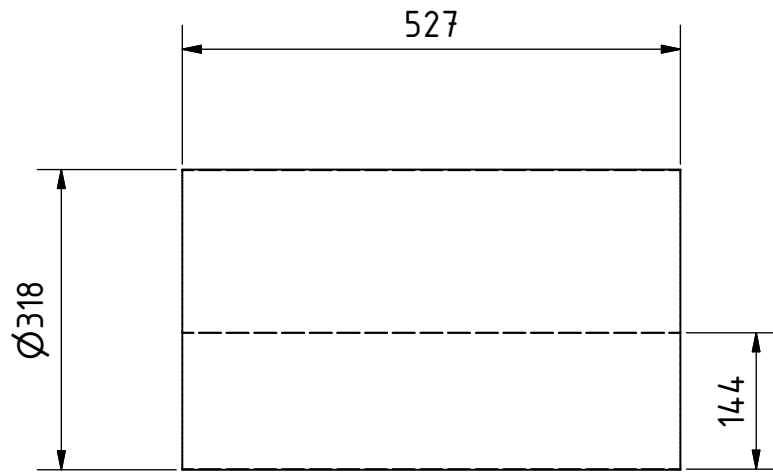


A (1 : 3)



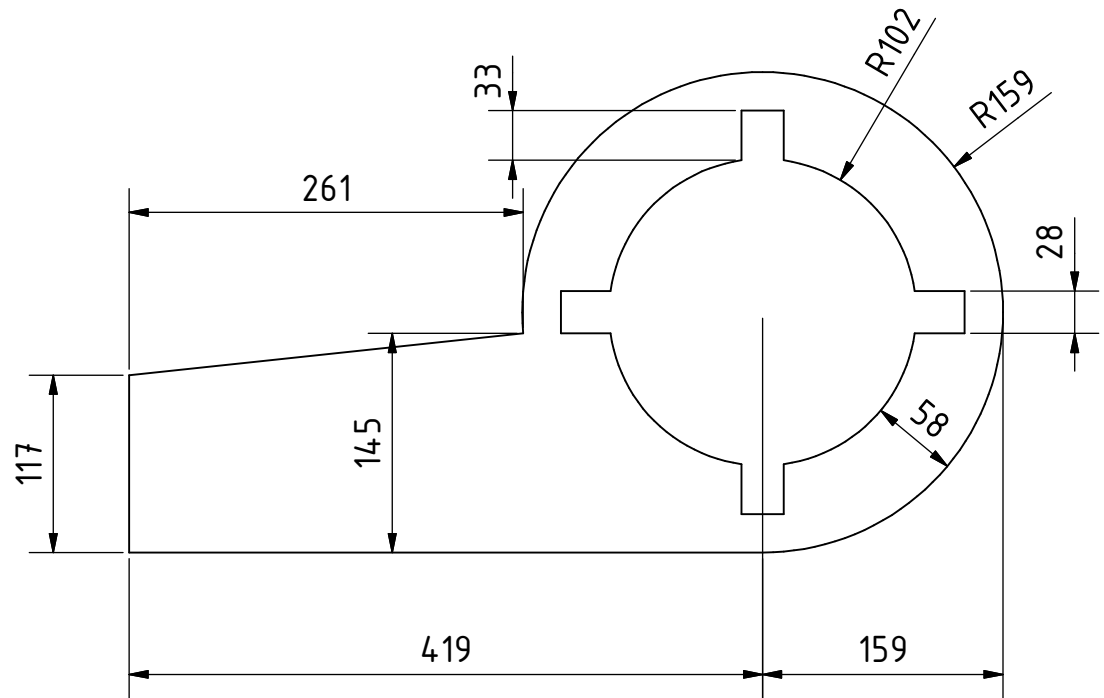
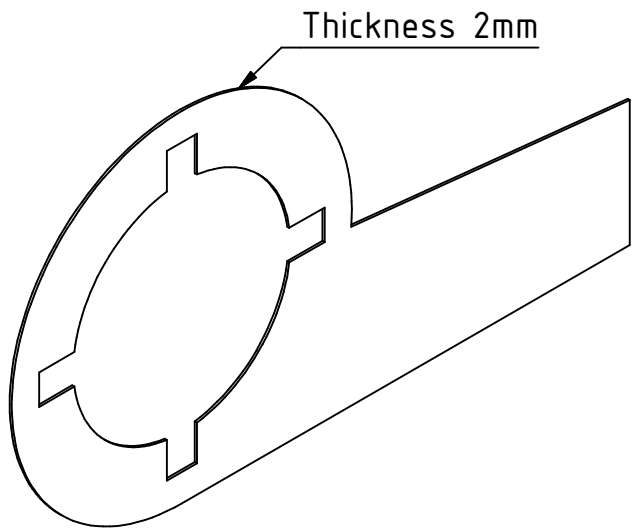
All metal parts are welded.
Note: All units in mm.

PROJECT Power Thresher for rice and wheat	CREATED BY J. Zeron	APPROVED BY A. Morillo	DATE 30/08/2021	VERSION 1.0
PART NAME Blower cover	FILE NAME Blower cover.ipn			POS 4.0
DEVELOPED BY	REDESIGNED BY 	DOC. TYPE Assembly	MATERIAL	QUANTITY 1
Practical Action	OHO e.V.	LICENCE CC-BY-SA 4.0	SCALE 1:10	SHEET 23 /43

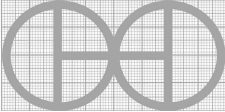


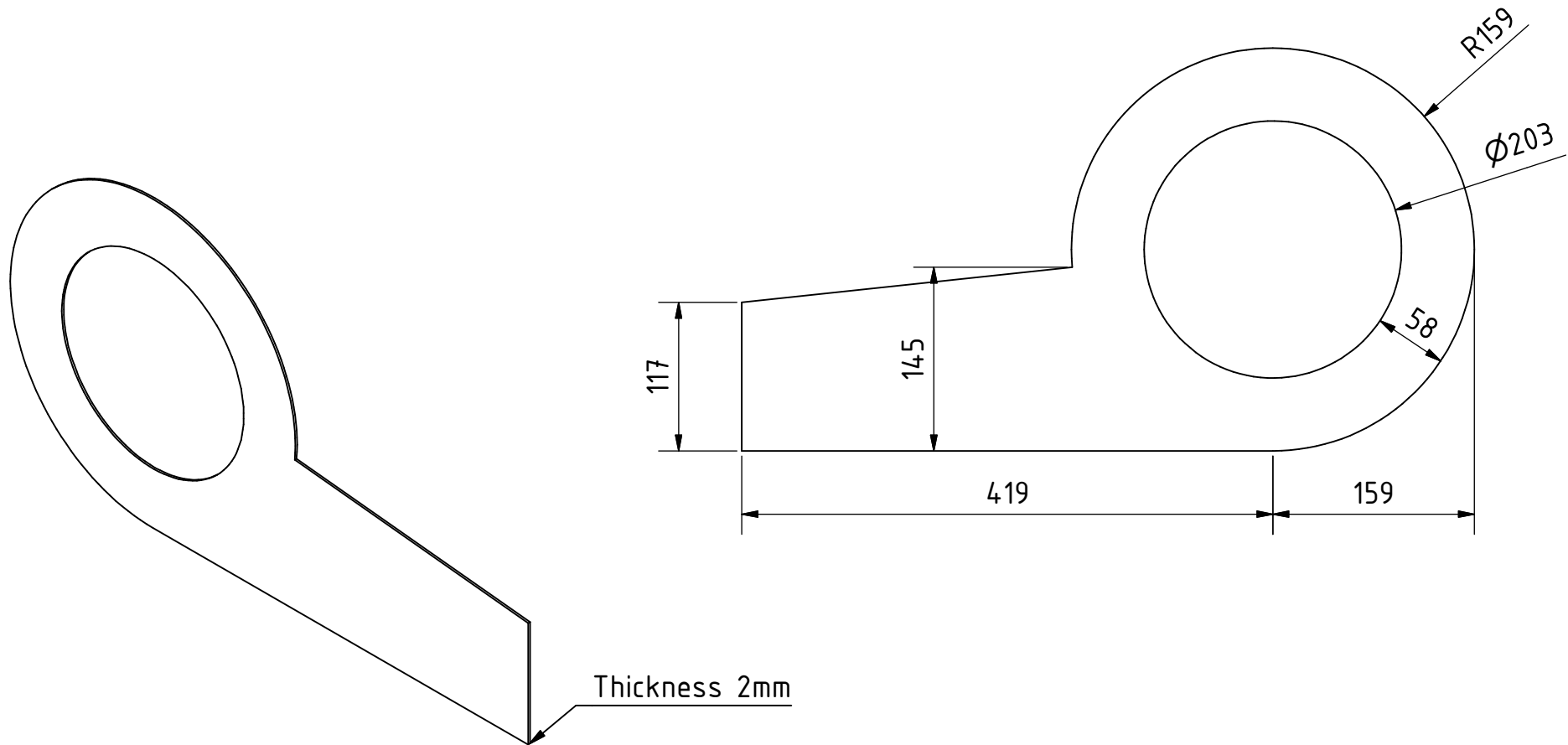
Note: All units in mm.

PROJECT Power Thresher for rice and wheat		CREATED BY J. Zeron	APPROVED BY A. Morillo	DATE 30/08/2021	VERSION 1.0
PART NAME Cover A		FILE NAME Cover A.ipt			POS 4.1
DEVELOPED BY Practical Action	REDESIGNED BY OHO e.V.	DOC. TYPE Part	MATERIAL Steel C45	QUANTITY 1	
		LICENCE CC-BY-SA 4.0	SCALE 1:8	SHEET 24 /43	

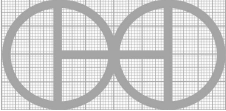


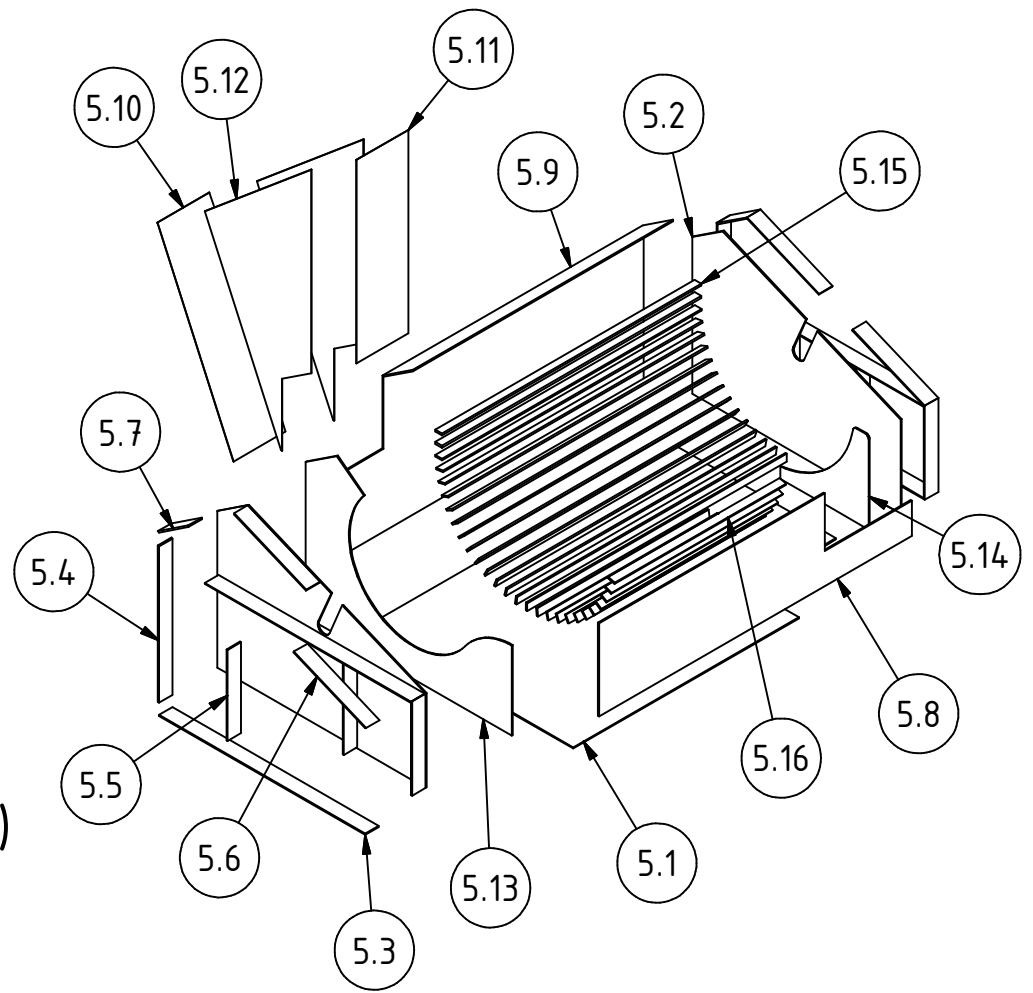
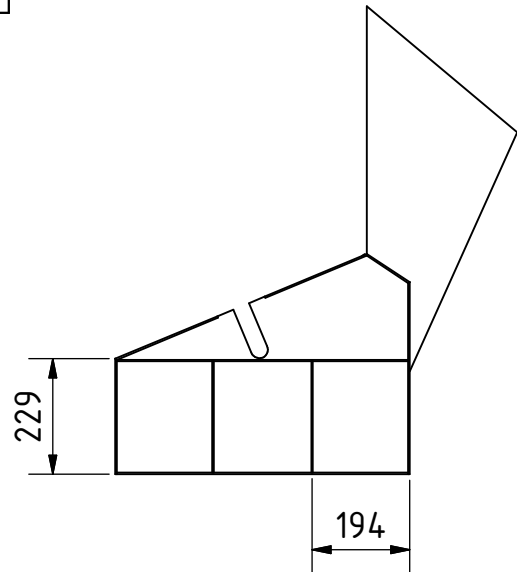
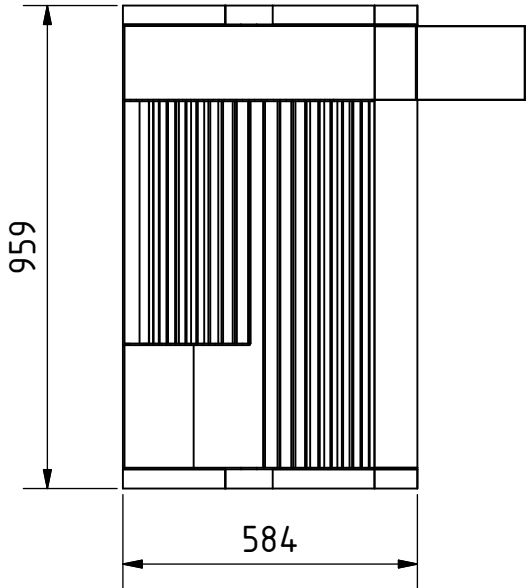
Note: All units in mm.

PROJECT Power Thresher for rice and wheat	CREATED BY J. Zeron	APPROVED BY A. Morillo	DATE 30/08/2021	VERSION 1.0
PART NAME Side sheet A	FILE NAME Side sheet A.ipt			POS 4.3
DEVELOPED BY	REDESIGNED BY 	DOC. TYPE Part	MATERIAL Steel C45	QUANTITY 1
Practical Action	OHO e.V.	LICENCE CC-BY-SA 4.0	SCALE 1:5	SHEET 25 /43

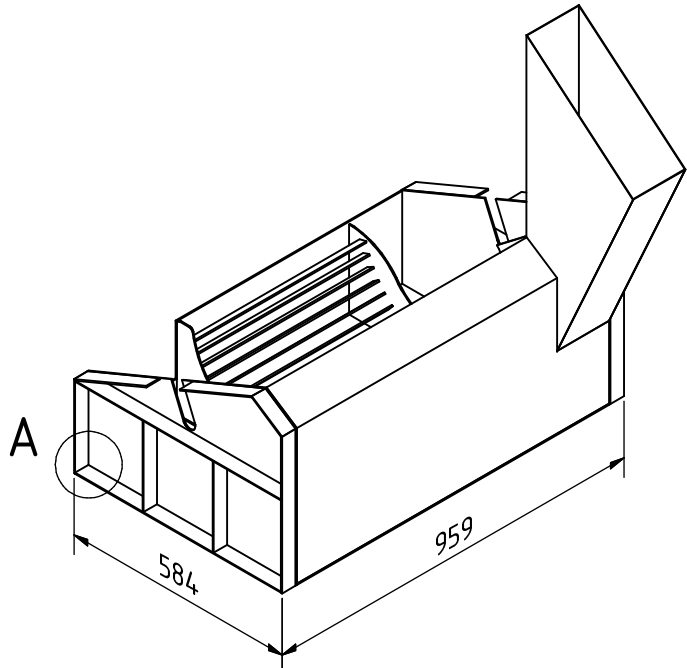
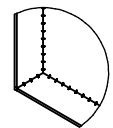


Note: All units in mm.

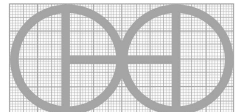
PROJECT Power Thresher for rice and wheat	CREATED BY J. Zeron	APPROVED BY A. Morillo	DATE 30/08/2021	VERSION 1.0
PART NAME Side sheet B	FILE NAME Side sheet B.ipt			POS 4.4
DEVELOPED BY Practical Action	REDESIGNED BY  OHO e.V.	DOC. TYPE Part	MATERIAL Steel C45	QUANTITY 1
		LICENCE CC-BY-SA 4.0	SCALE 1:5	SHEET 26 /43

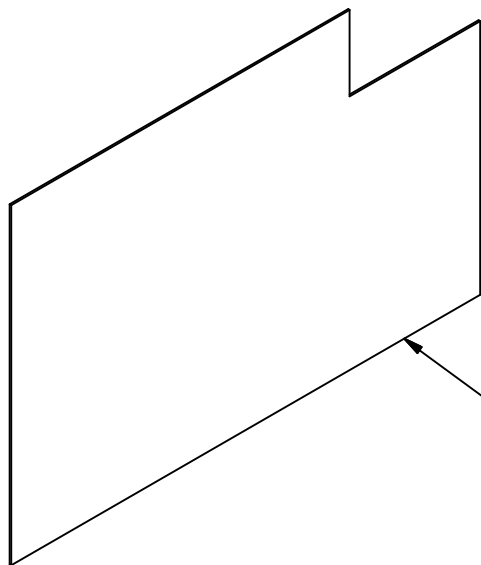


A (0,13 : 1)

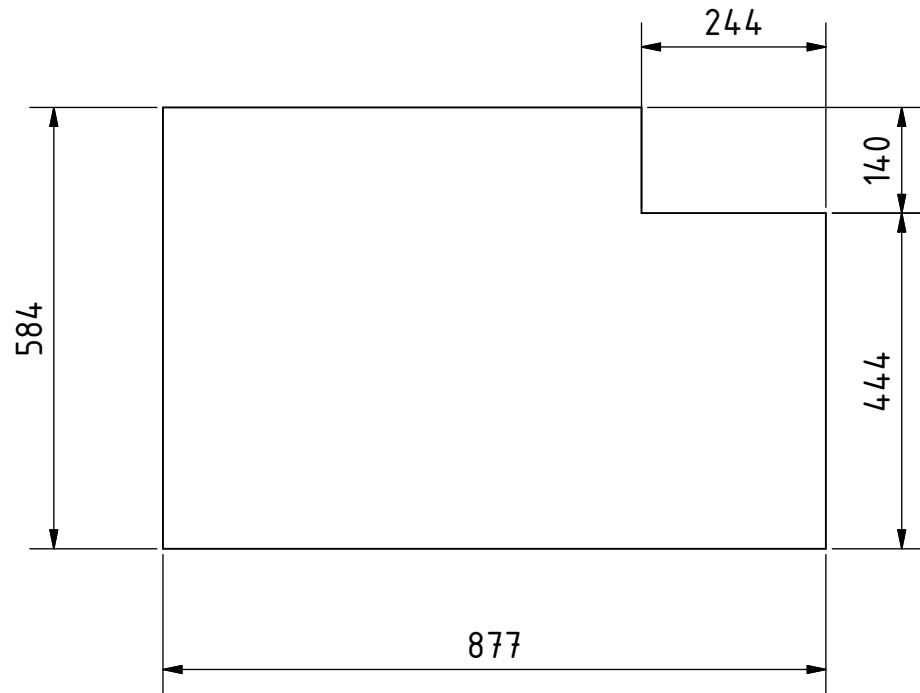


All metal parts are welded.
Note: All units in mm.

PROJECT Power Thresher for rice and wheat		CREATED BY J. Zeron		APPROVED BY A. Morillo		DATE 30/08/2021		VERSION 1.0	
PART NAME Lower concave		FILE NAME Lower concave.ipn						POS 5.0	
DEVELOPED BY Practical Action		REDESIGNED BY OHO e.V.		DOC. TYPE Assembly		MATERIAL		QUANTITY 1	
				LICENCE CC-BY-SA 4.0		SCALE 1:15		SHEET 27 /43	

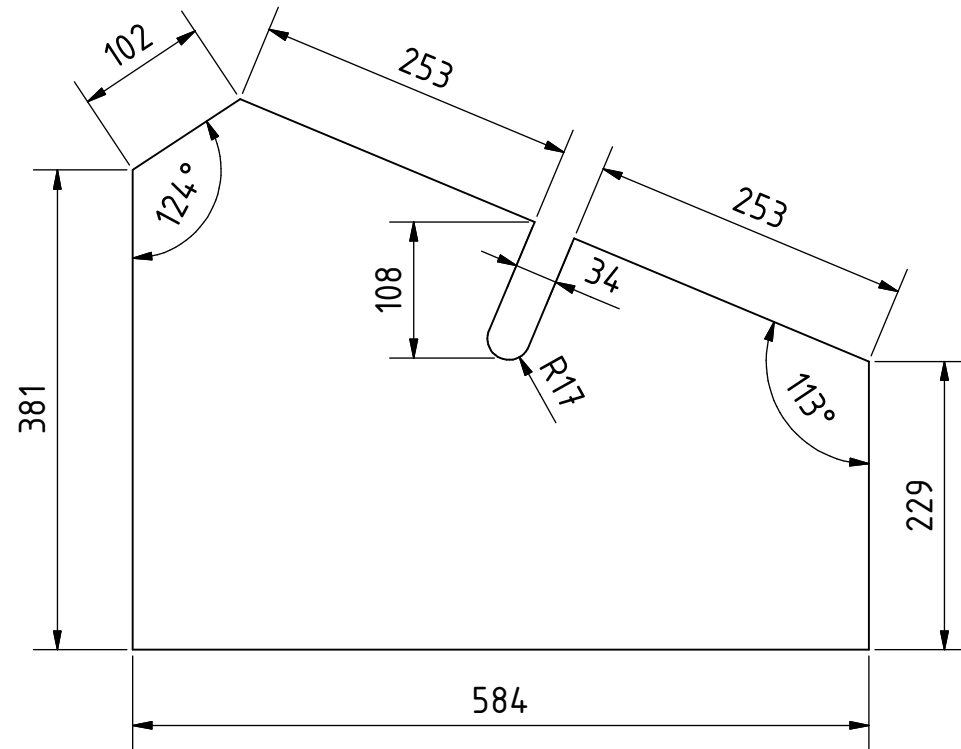
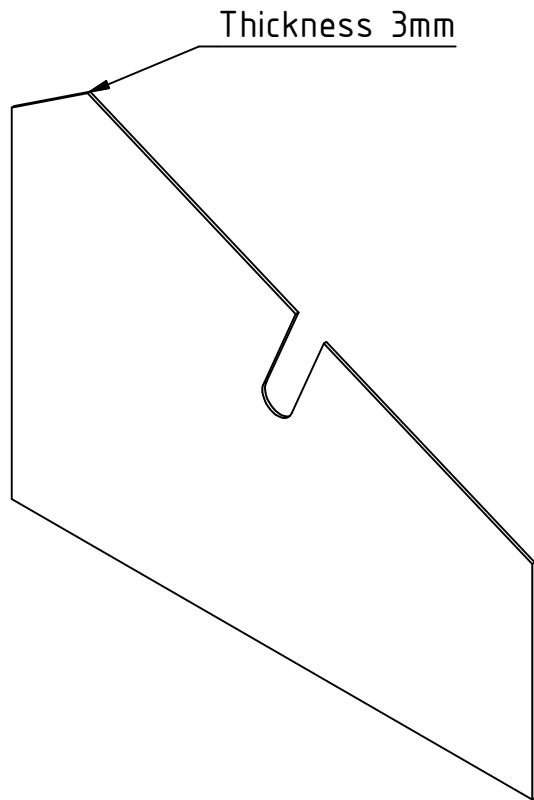


Thickness 3mm



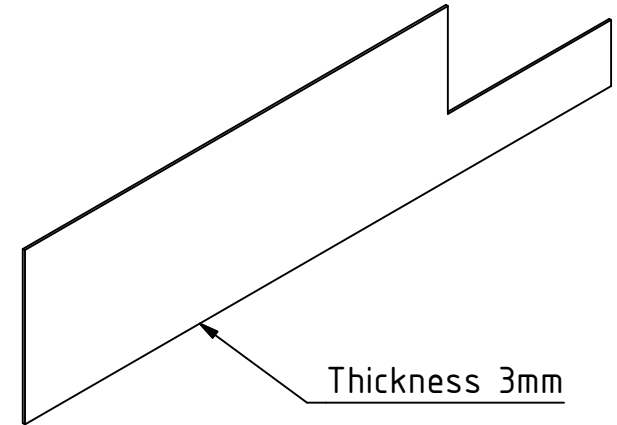
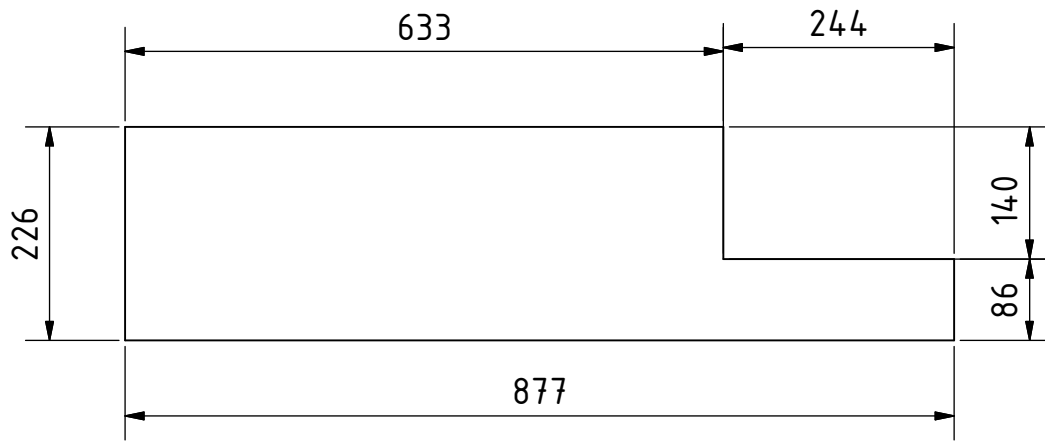
Note: All units in mm.

PROJECT Power Thresher for rice and wheat		CREATED BY J. Zeron	APPROVED BY A. Morillo	DATE 30/08/2021	VERSION 1.0
PART NAME Bottom cover		FILE NAME Bottom cover.ipt			POS 5.1
DEVELOPED BY Practical Action	REDESIGNED BY OHO e.V.	DOC. TYPE Part	MATERIAL Steel C45	QUANTITY 1	
		LICENCE CC-BY-SA 4.0	SCALE 1.10	SHEET 28 /43	



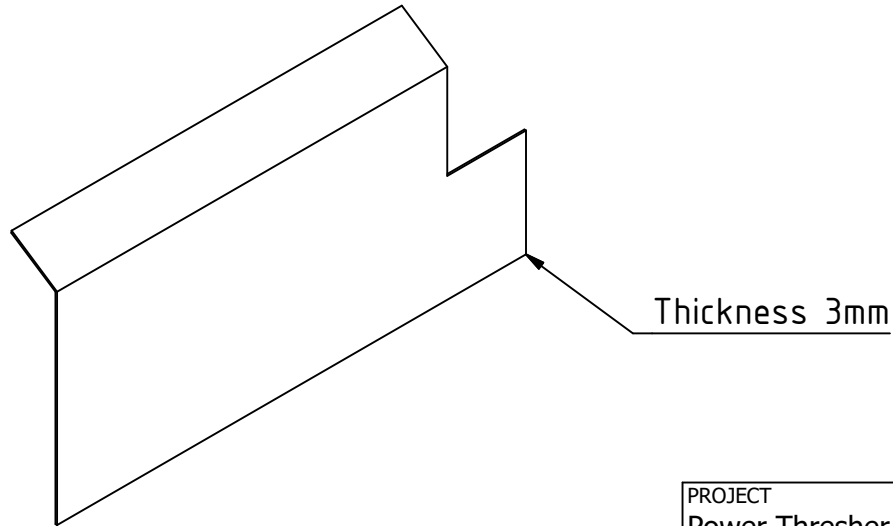
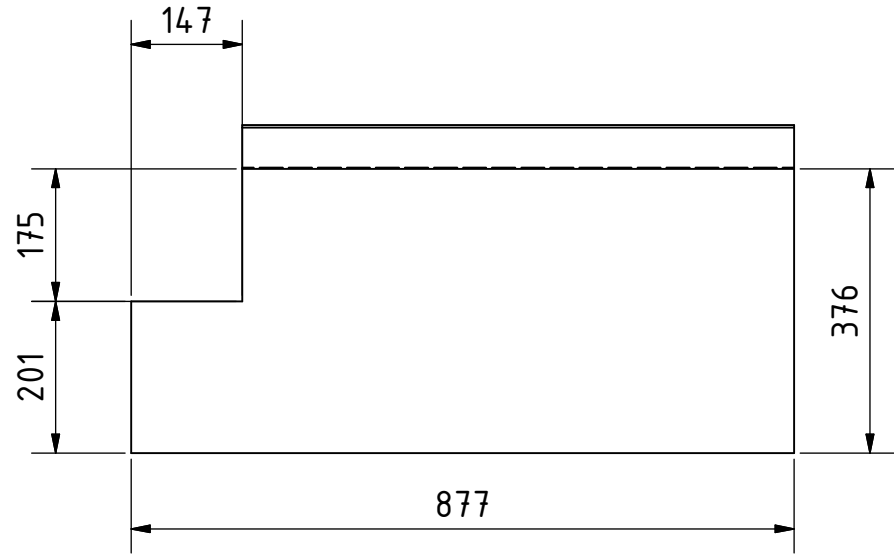
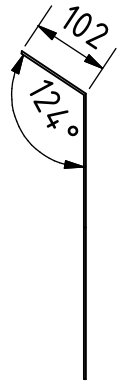
Note: All units in mm.

PROJECT Power Thresher for rice and wheat		CREATED BY J. Zeron		APPROVED BY A. Morillo		DATE 30/08/2021		VERSION 1.0		
PART NAME Side cover		FILE NAME Side cover.ipt							POS 5.2	
DEVELOPED BY Practical Action		REDESIGNED BY OHO e.V.		DOC. TYPE Part		MATERIAL Steel C45		QUANTITY 2		
				LICENCE CC-BY-SA 4.0		SCALE 1:6		SHEET 29 /43		



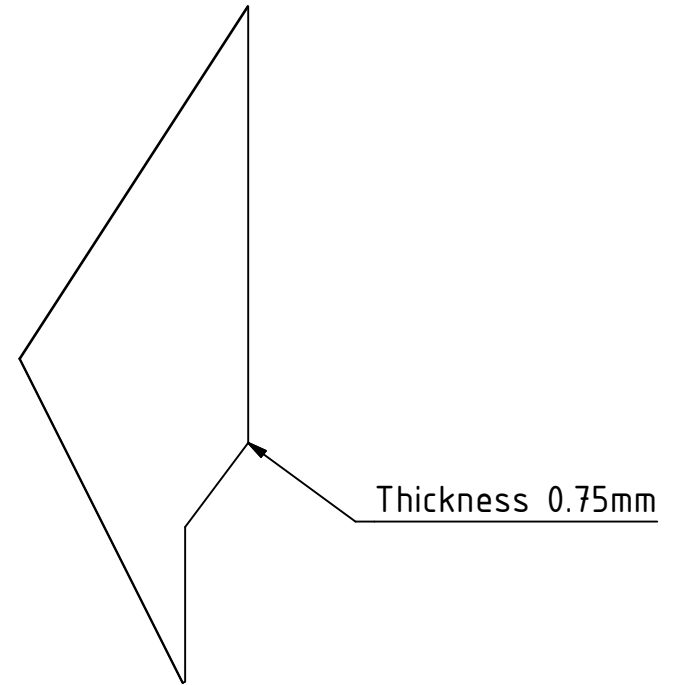
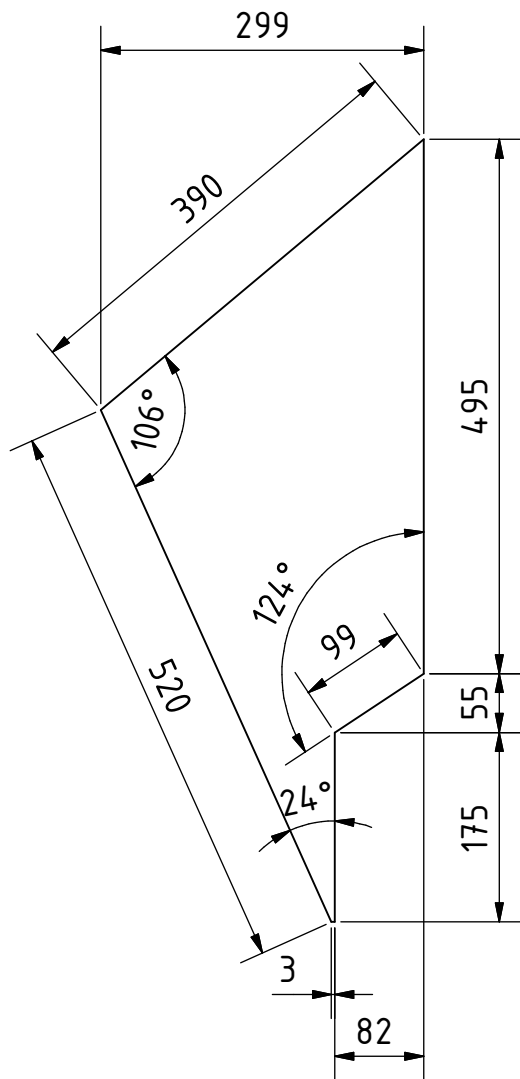
Note: All units in mm.

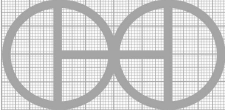
PROJECT Power Thresher for rice and wheat		CREATED BY J. Zeron	APPROVED BY A. Morillo	DATE 30/08/2021	VERSION 1.0
PART NAME Back cover		FILE NAME Back cover.ipt			POS 5.8
DEVELOPED BY Practical Action	REDESIGNED BY OHO e.V.	DOC. TYPE Part	MATERIAL Steel C45	QUANTITY 1	
		LICENCE CC-BY-SA 4.0	SCALE 1:8	SHEET 30 /43	



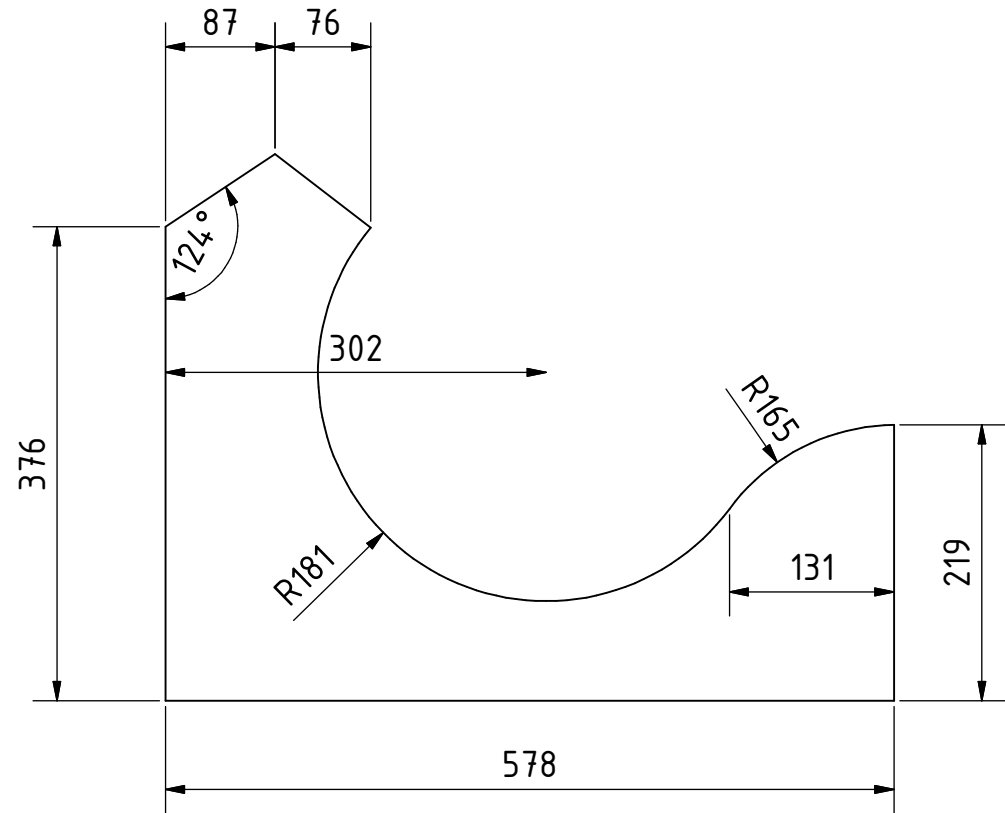
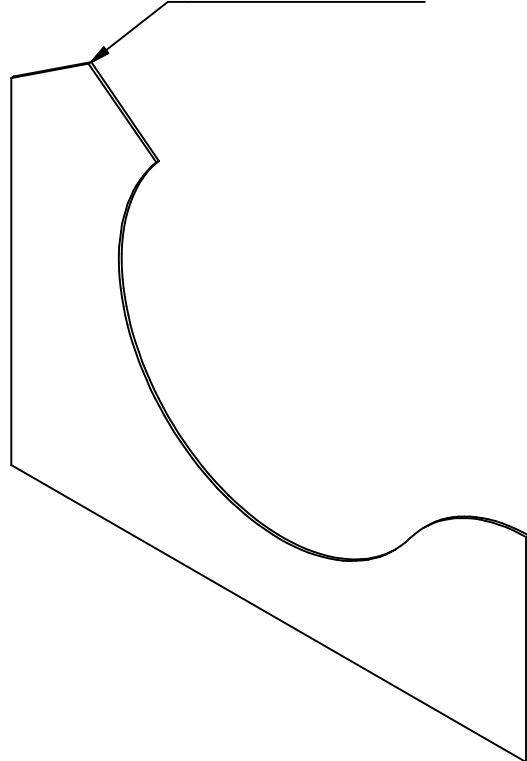
Note: All units in mm.

PROJECT Power Thresher for rice and wheat		CREATED BY J. Zeron		APPROVED BY A. Morillo		DATE 30/08/2021	VERSION 1.0	
PART NAME Front cover		FILE NAME Front cover.ipt					POS 5.9	
DEVELOPED BY Practical Action		REDESIGNED BY OHO e.V.		DOC. TYPE Part	MATERIAL Steel C45		QUANTITY 1	
				LICENCE CC-BY-SA 4.0		SCALE 1:10	SHEET 31 /43	



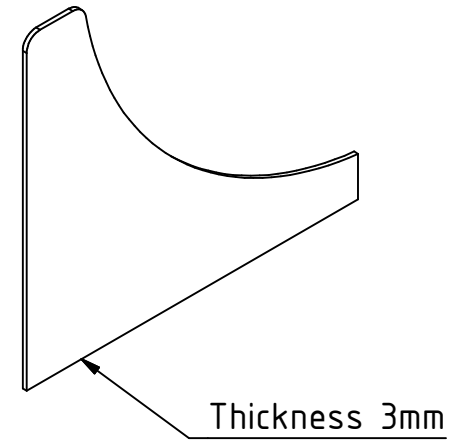
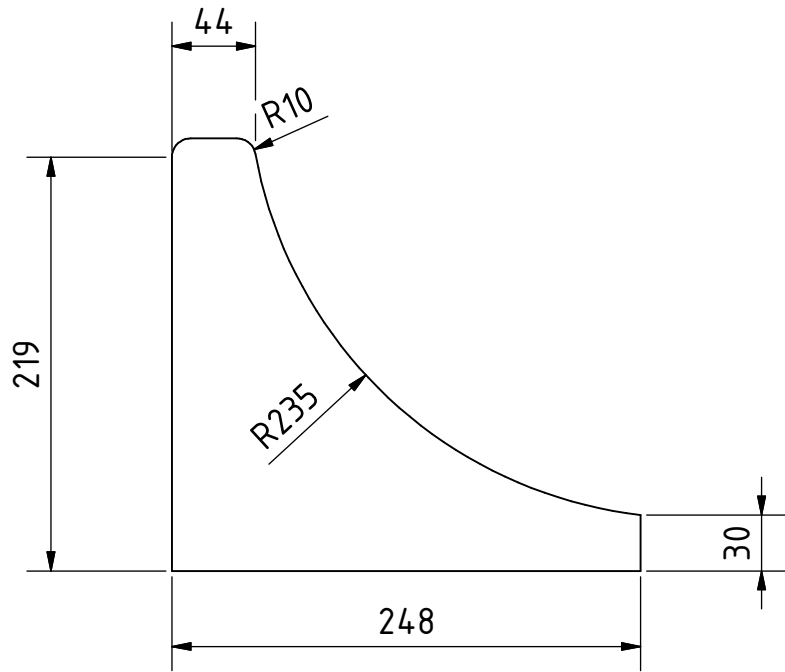
PROJECT Power Thresher for rice and wheat	CREATED BY J. Zeron	APPROVED BY A. Morillo	DATE 30/08/2021	VERSION 1.0
PART NAME Straw outlet C	FILE NAME Straw outlet C.ipt			POS 5.12
DEVELOPED BY Practical Action	REDESIGNED BY  OHO e.V.	DOC. TYPE Part	MATERIAL Steel C45	QUANTITY 2
		LICENCE CC-BY-SA 4.0	SCALE 1:7	SHEET 32 /43

Thickness 3mm



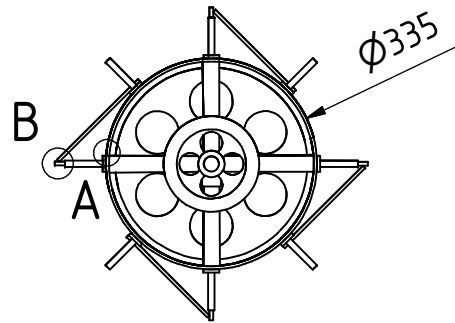
Note: All units in mm.

PROJECT Power Thresher for rice and wheat		CREATED BY J. Zeron	APPROVED BY A. Morillo	DATE 30/08/2021	VERSION 1.0
PART NAME Divided plate		FILE NAME Divided plate.ipt			POS 5.13
DEVELOPED BY Practical Action	REDESIGNED BY OHO e.V.	DOC. TYPE Part	MATERIAL Steel C45	QUANTITY 1	
		LICENCE CC-BY-SA 4.0	SCALE 1:6	SHEET 33 /43	



Note: All units in mm.

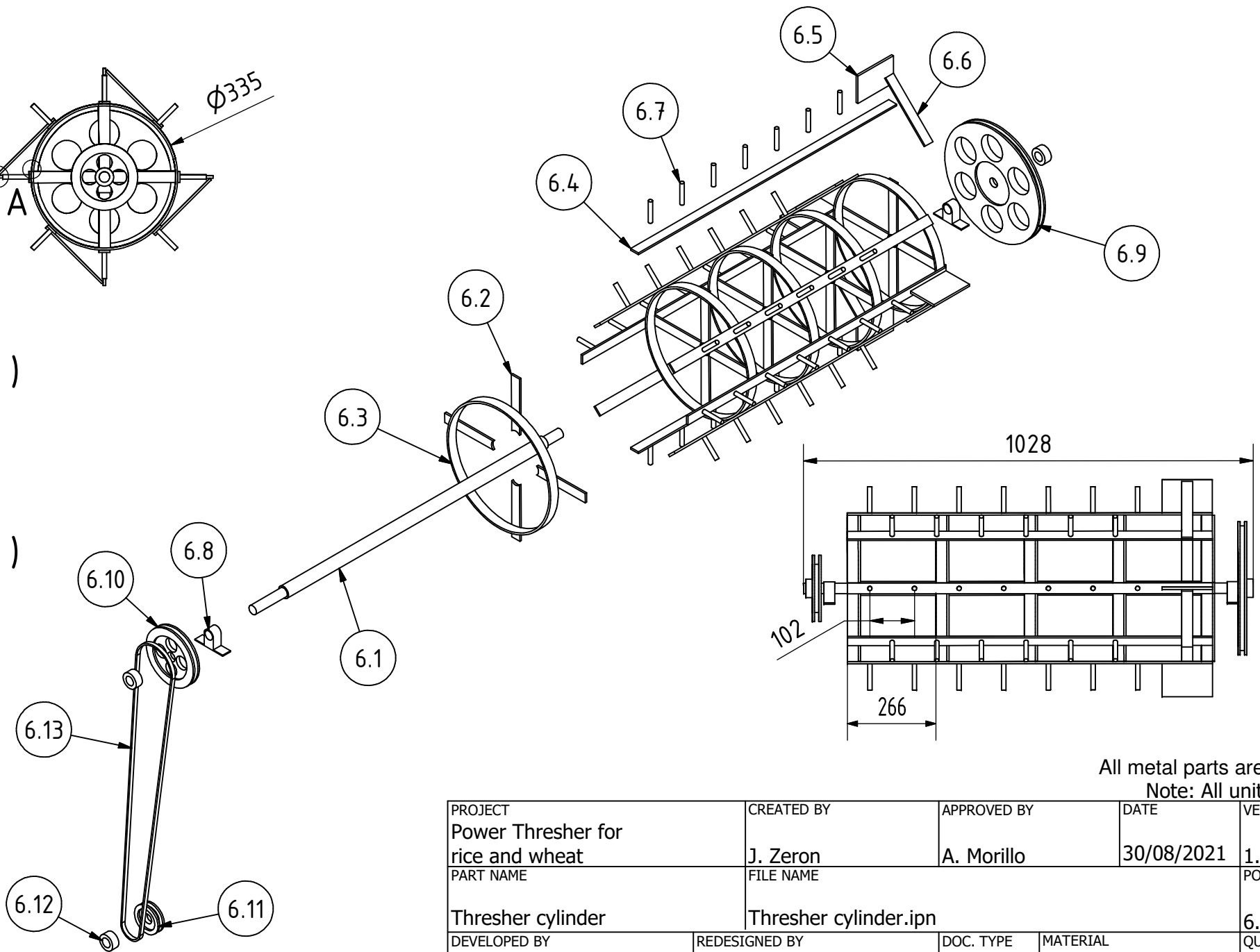
PROJECT Power Thresher for rice and wheat		CREATED BY J. Zeron	APPROVED BY A. Morillo	DATE 30/08/2021	VERSION 1.0
PART NAME Inlet support plate		FILE NAME Inlet support plate.ipt			POS 5.14
DEVELOPED BY Practical Action	REDESIGNED BY OHO e.V.	DOC. TYPE Part	MATERIAL Steel C45	QUANTITY 1	
		LICENCE CC-BY-SA 4.0	SCALE 1:4	SHEET 34 /43	



A (1 : 3)

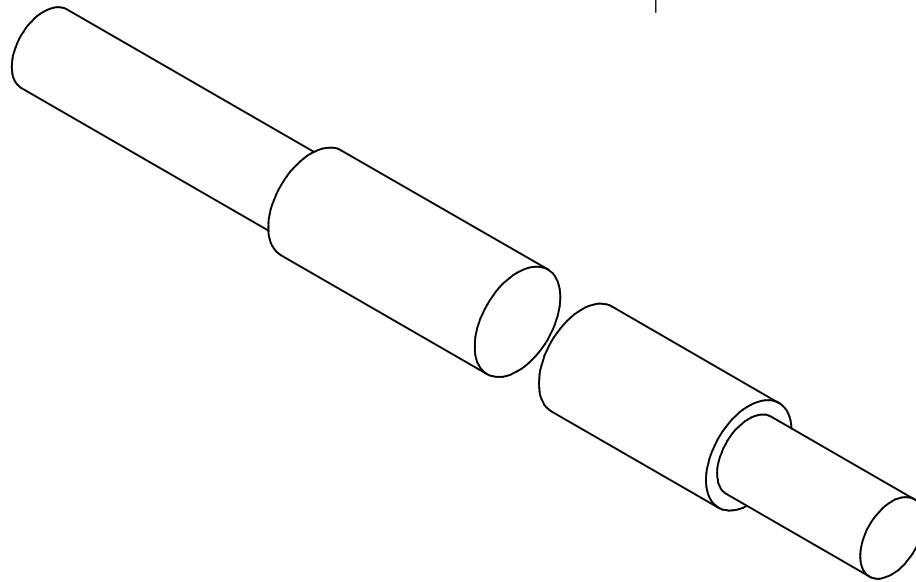
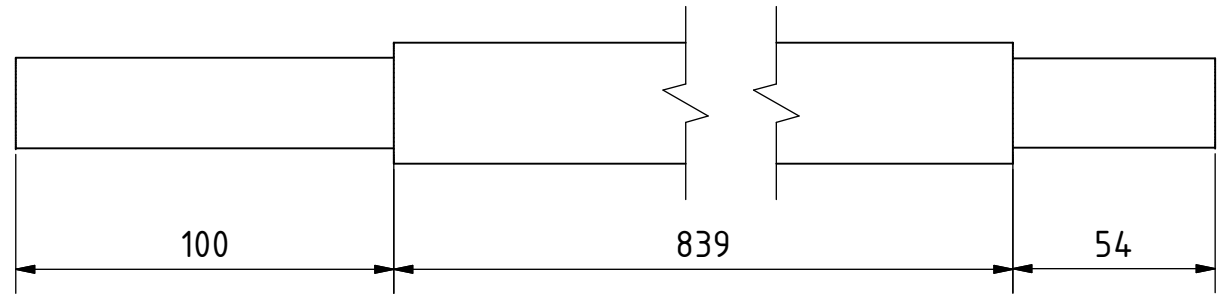
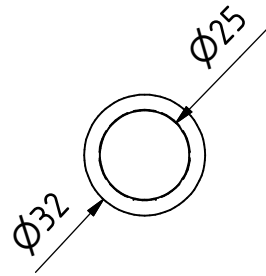


B (1 : 3)

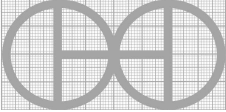


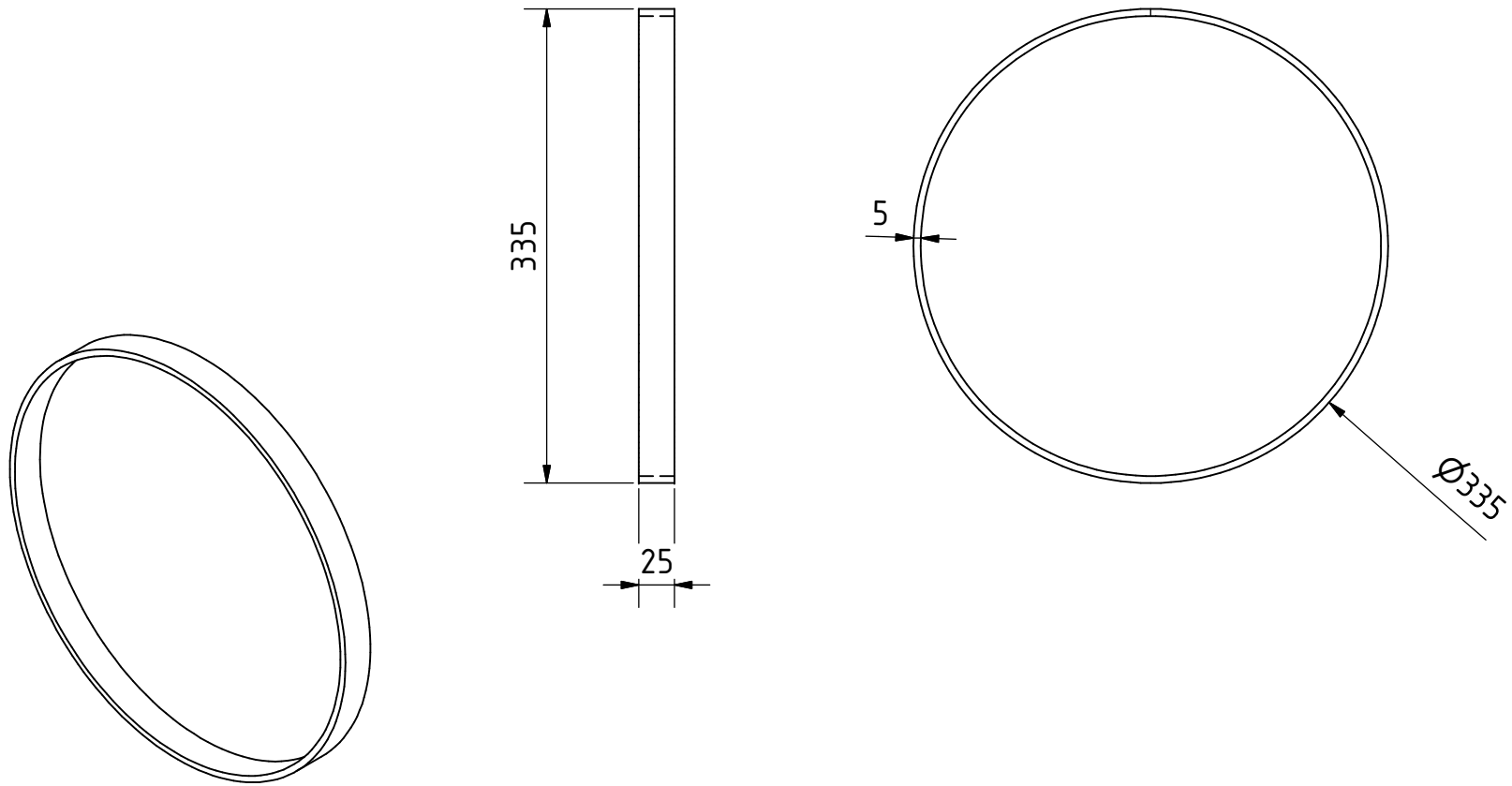
All metal parts are welded.
Note: All units in mm.

PROJECT Power Thresher for rice and wheat	CREATED BY J. Zeron	APPROVED BY A. Morillo	DATE 30/08/2021	VERSION 1.0
PART NAME Thresher cylinder	FILE NAME Thresher cylinder.ipn			POS 6.0
DEVELOPED BY Practical Action	REDESIGNED BY OHO e.V.	DOC. TYPE Assembly	MATERIAL	QUANTITY 1
		LICENCE CC-BY-SA 4.0	SCALE 1:12	SHEET 35 /43



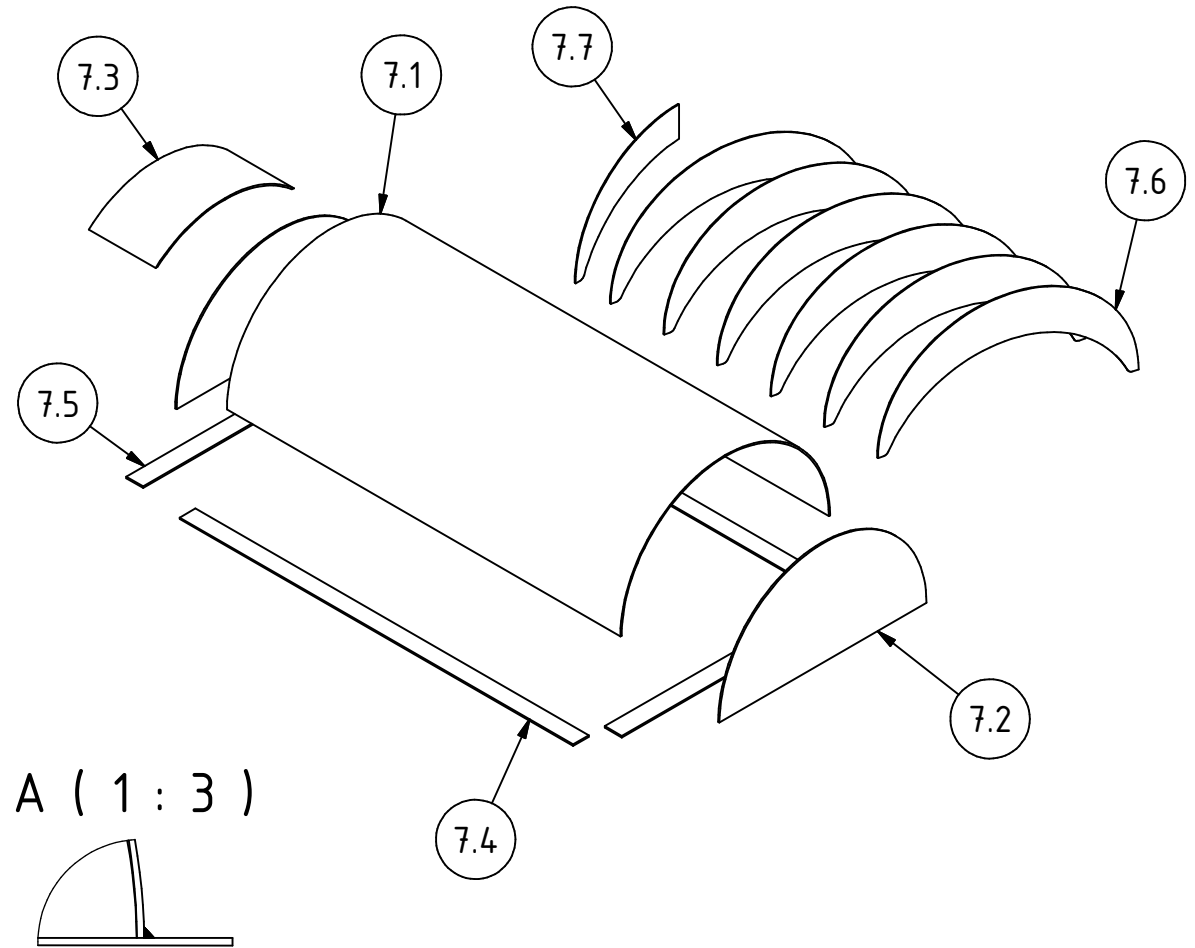
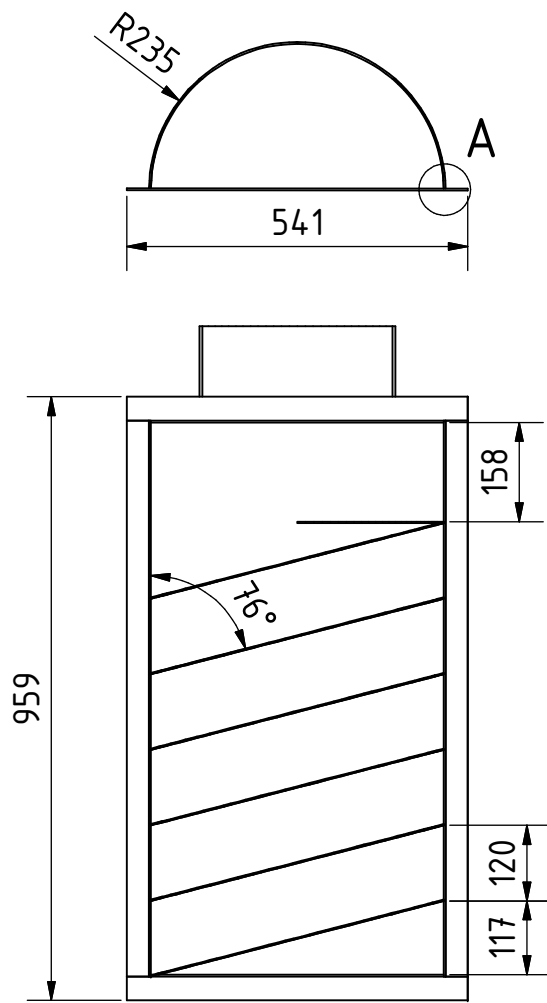
Note: All units in mm.

PROJECT Power Thresher for rice and wheat	CREATED BY J. Zeron	APPROVED BY A. Morillo	DATE 30/08/2021	VERSION 1.0
PART NAME Thresher Shaft	FILE NAME Thresher Shaft.ipt			POS 6.1
DEVELOPED BY Practical Action	REDESIGNED BY  OHO e.V.	DOC. TYPE Part	MATERIAL Steel C45	QUANTITY 1
		LICENCE CC-BY-SA 4.0	SCALE 1:2	SHEET 36 /43

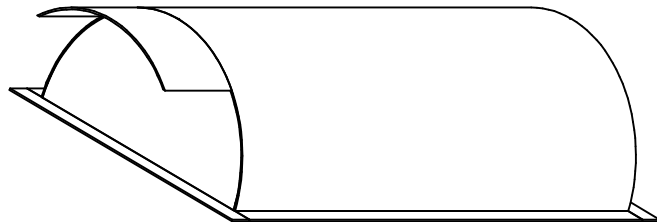


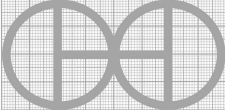
Note: All units in mm.

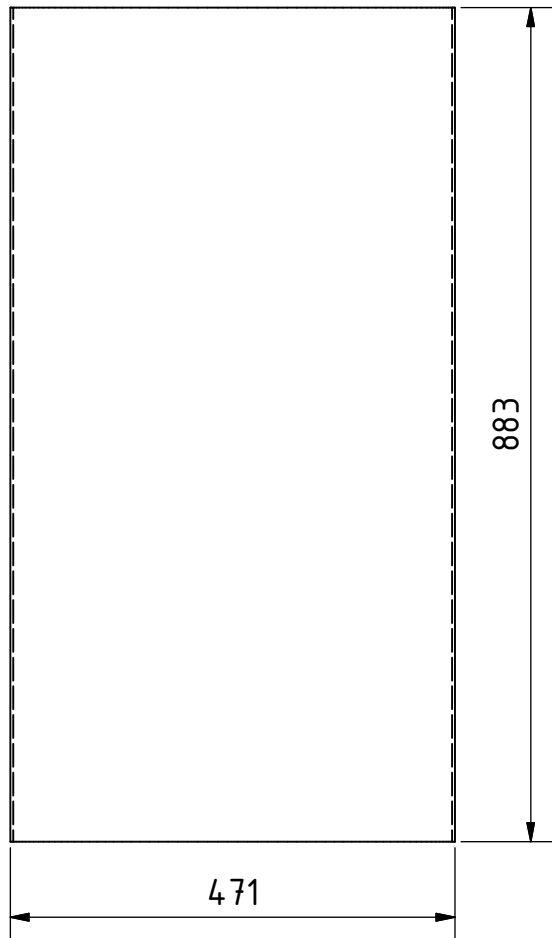
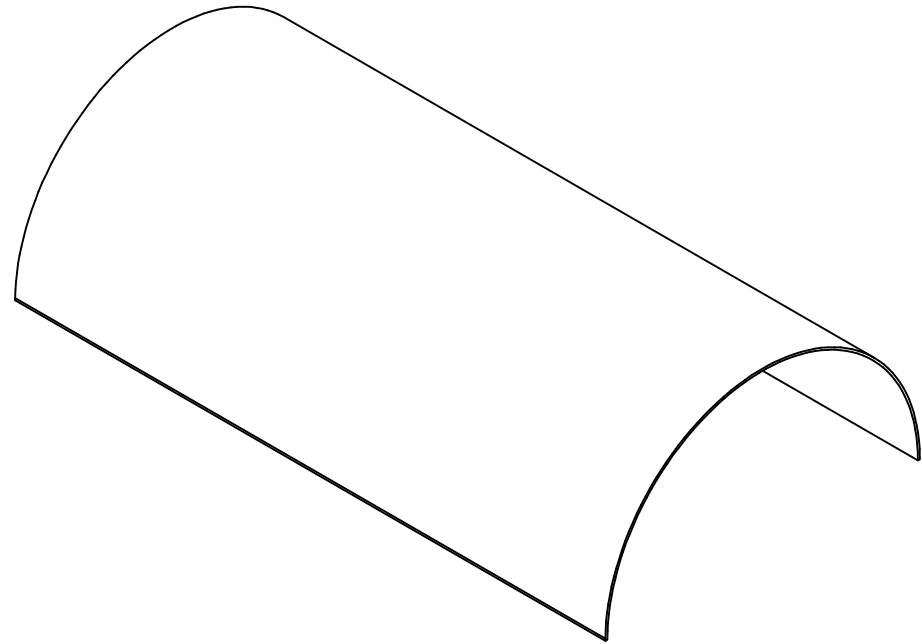
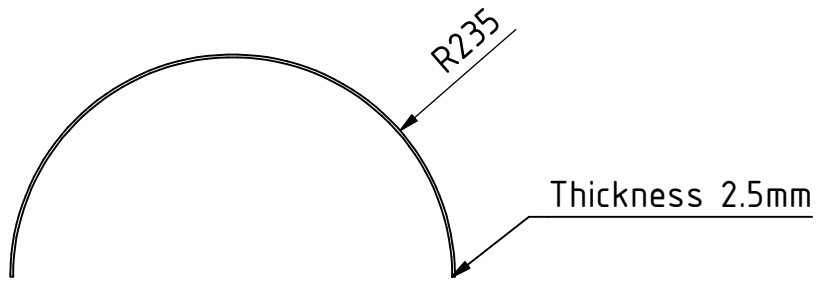
PROJECT Power Thresher for rice and wheat		CREATED BY J. Zeron	APPROVED BY A. Morillo	DATE 30/08/2021	VERSION 1.0
PART NAME Thresher Flat bar B		FILE NAME Thresher Flat bar B.ipt			POS 6.3
DEVELOPED BY Practical Action	REDESIGNED BY OHO e.V.	DOC. TYPE Part	MATERIAL Steel A36	QUANTITY 5	
		LICENCE CC-BY-SA 4.0	SCALE 1:5	SHEET 37 /43	



All metal parts are welded.
Note: All units in mm.

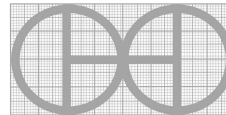


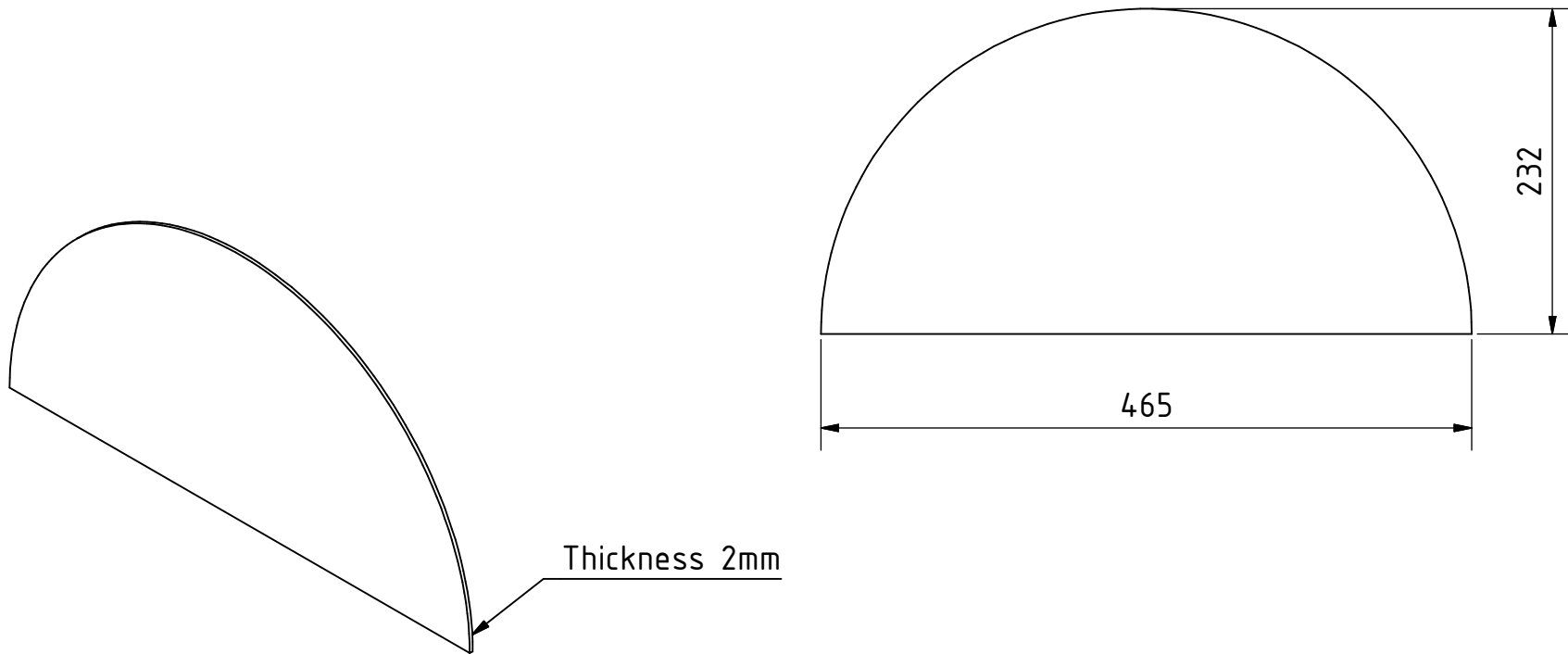
PROJECT Power Thresher for rice and wheat	CREATED BY J. Zeron	APPROVED BY A. Morillo	DATE 30/08/2021	VERSION 1.0
PART NAME Upper concave	FILE NAME Upper concave.ipn			POS 7.0
DEVELOPED BY	REDESIGNED BY 	DOC. TYPE Assembly	MATERIAL	QUANTITY 1
Practical Action	OHO e.V.	LICENCE CC-BY-SA 4.0	SCALE 1:12	SHEET 38 /43



Note: All units in mm.

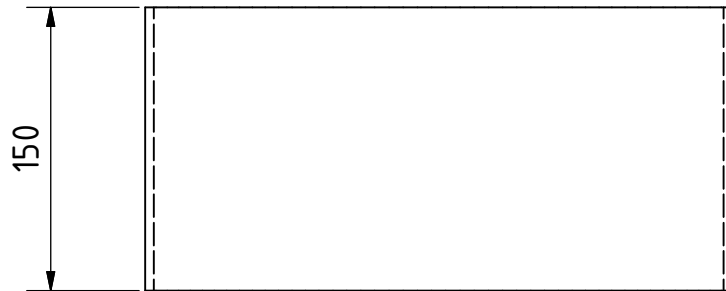
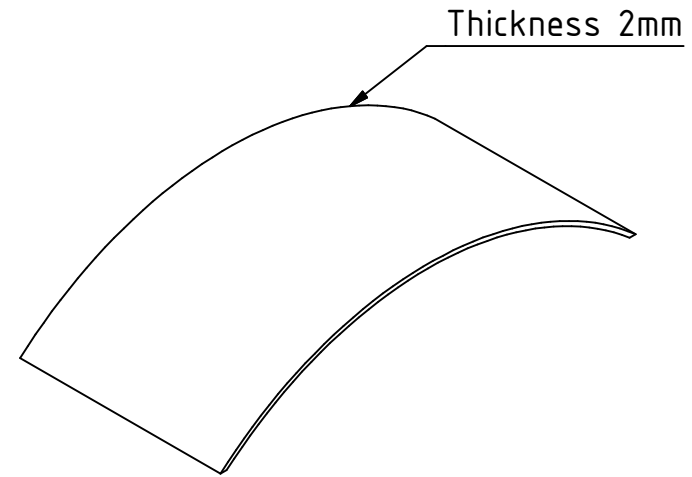
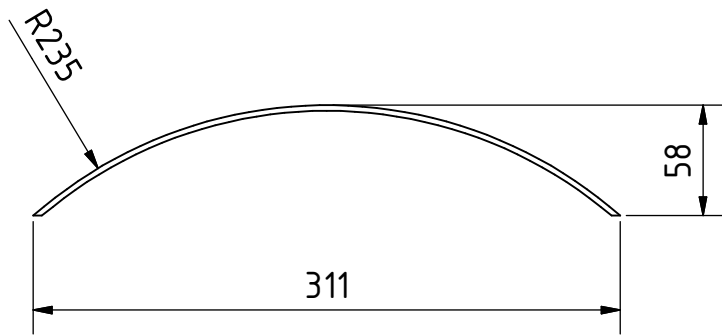
PROJECT Power Thresher for rice and wheat	CREATED BY J. Zeron	APPROVED BY A. Morillo	DATE 30/08/2021	VERSION 1.0
PART NAME Top cover upper	FILE NAME Top cover upper.ipt			POS 7.1
DEVELOPED BY Practical Action	REDESIGNED BY OHO e.V.	DOC. TYPE Part	MATERIAL Steel C45	QUANTITY 1
		LICENCE CC-BY-SA 4.0	SCALE 1:8	SHEET 39 /43





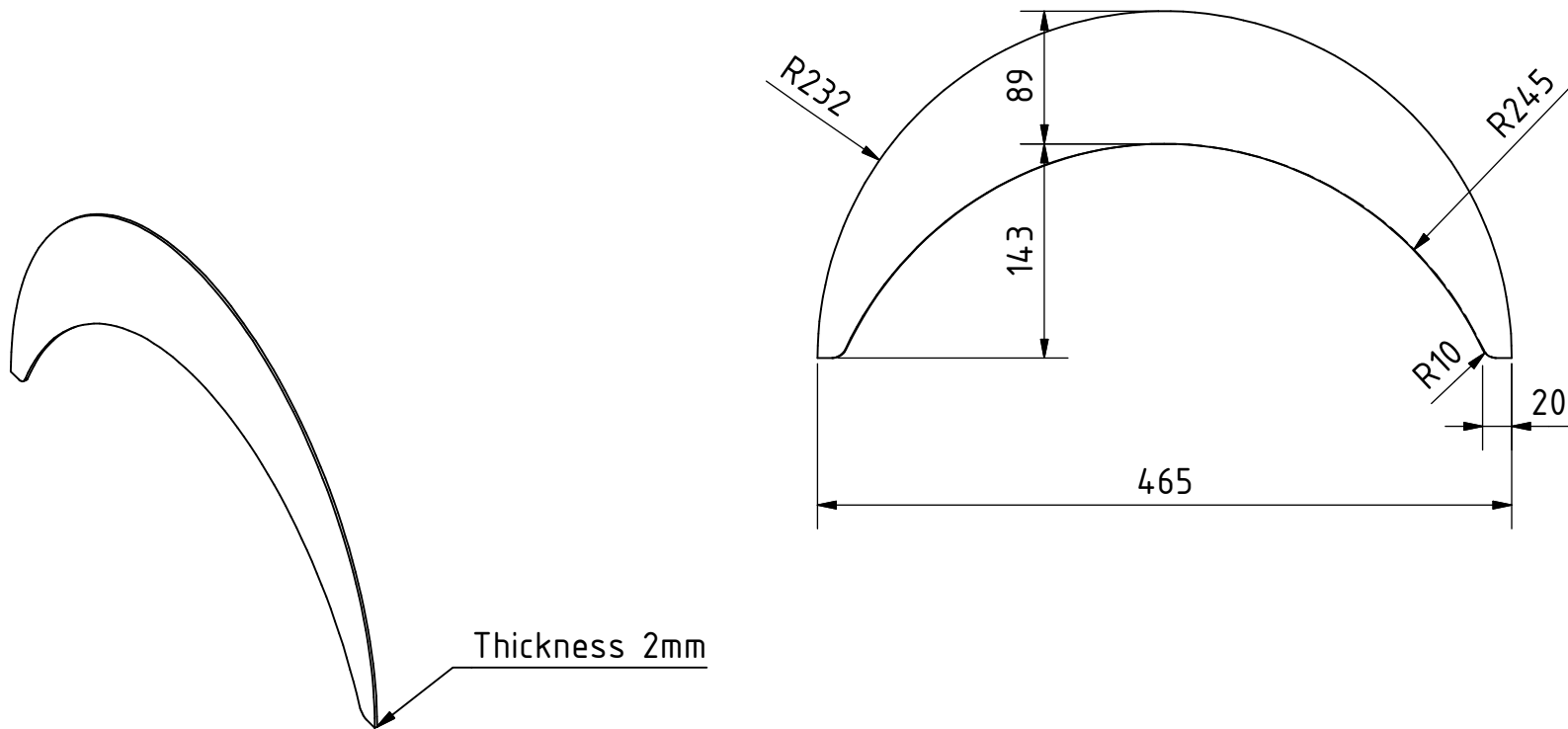
Note: All units in mm.

PROJECT Power Thresher for rice and wheat	CREATED BY J. Zeron	APPROVED BY A. Morillo	DATE 30/08/2021	VERSION 1.0
PART NAME Side cover upper	FILE NAME Side cover upper.ipt			POS 7.2
DEVELOPED BY Practical Action	REDESIGNED BY OHO e.V.	DOC. TYPE Part	MATERIAL Steel C45	QUANTITY 2
		LICENCE CC-BY-SA 4.0	SCALE 1:5	SHEET 40 /43



Note: All units in mm.

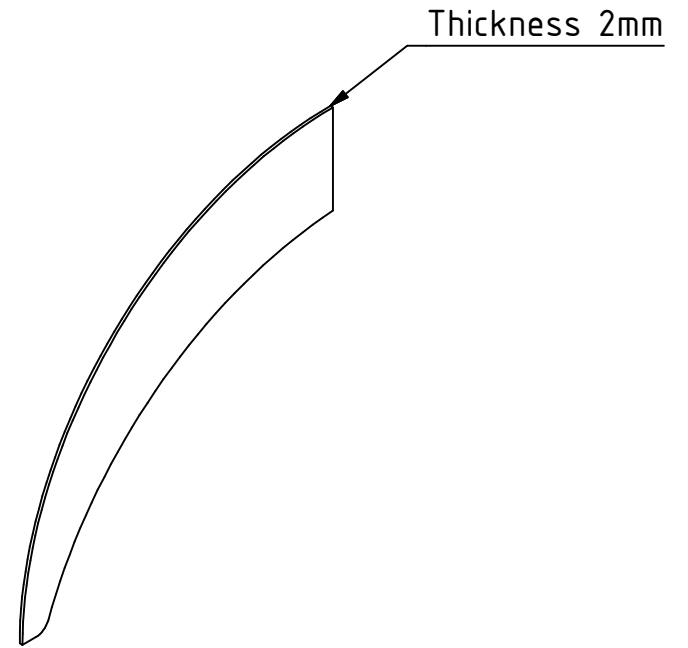
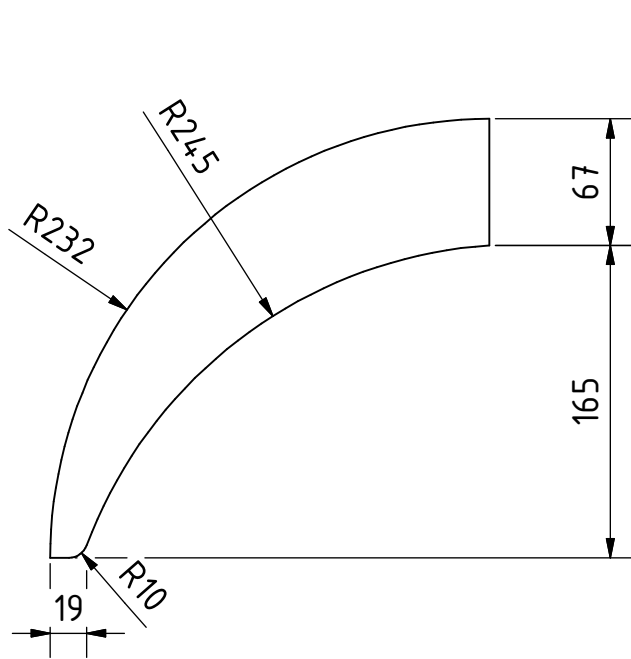
PROJECT Power Thresher for rice and wheat	CREATED BY J. Zeron	APPROVED BY A. Morillo	DATE 30/08/2021	VERSION 1.0
PART NAME Out sheet	FILE NAME Out sheet.ipt			POS 7.3
DEVELOPED BY Practical Action	REDESIGNED BY OHO e.V.	DOC. TYPE Part	MATERIAL Steel C45	QUANTITY 1
		LICENCE CC-BY-SA 4.0	SCALE 1:4	SHEET 41 /43



Thickness 2mm

Note: All units in mm.

PROJECT Power Thresher for rice and wheat		CREATED BY J. Zeron	APPROVED BY A. Morillo	DATE 30/08/2021	VERSION 1.0
PART NAME Spiral sheet A		FILE NAME Spiral sheet A.ipt			POS 7.6
DEVELOPED BY Practical Action	REDESIGNED BY OHO e.V.	DOC. TYPE Part	MATERIAL Steel C45	QUANTITY 6	
		LICENCE CC-BY-SA 4.0	SCALE 1:5	SHEET 42 /43	



Note: All units in mm.

PROJECT Power Thresher for rice and wheat	CREATED BY J. Zeron	APPROVED BY A. Morillo	DATE 30/08/2021	VERSION 1.0
PART NAME Spiral sheet B	FILE NAME Spiral sheet B.ipt			POS 7.7
DEVELOPED BY Practical Action	REDESIGNED BY OHO e.V.	DOC. TYPE Part	MATERIAL Steel C45	QUANTITY 1
		LICENCE CC-BY-SA 4.0	SCALE 1:4	SHEET 43 /43