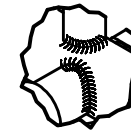
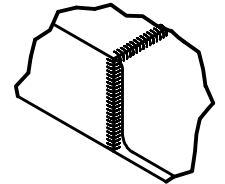


M (1:6)

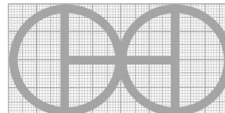


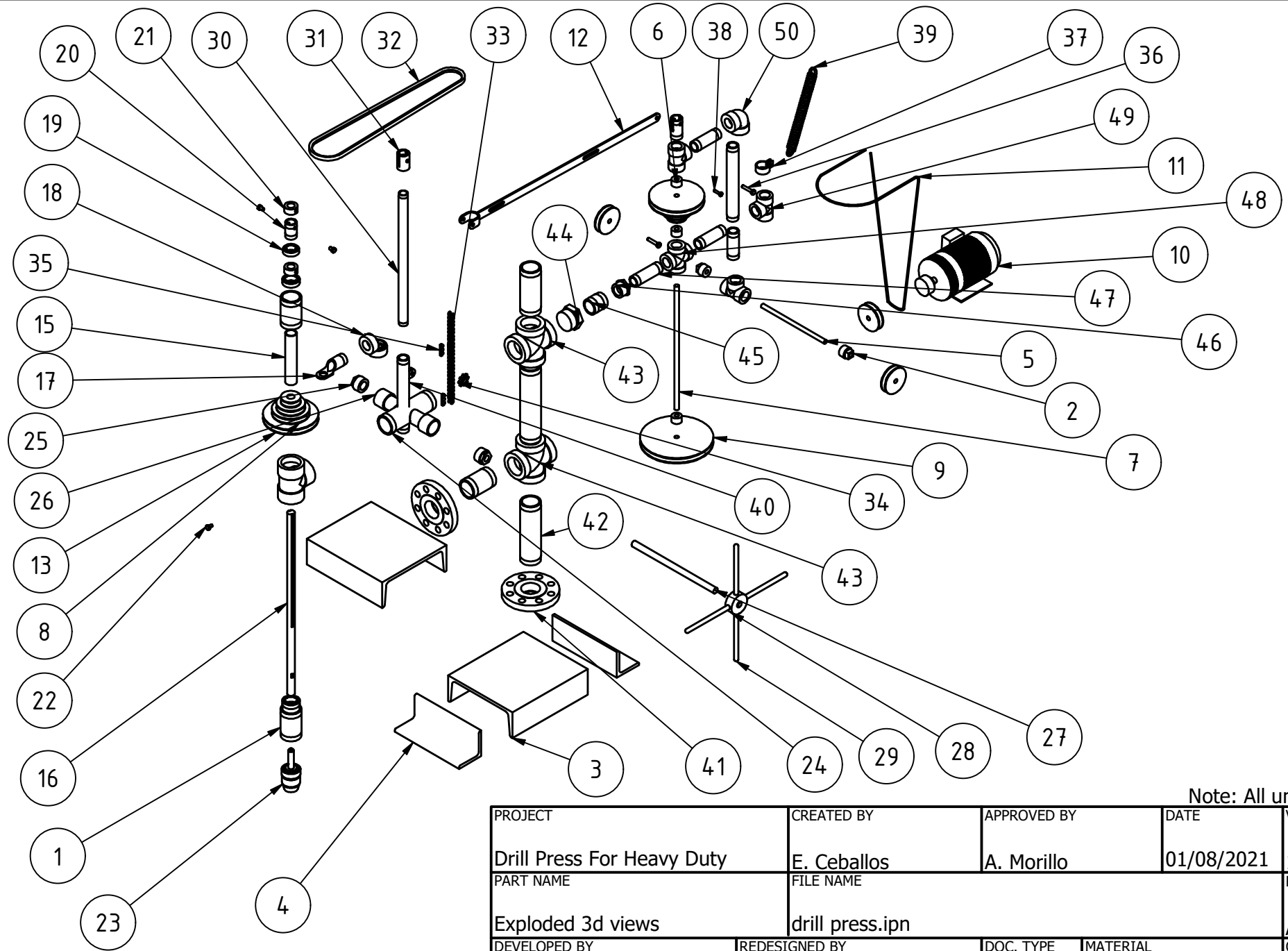
L (1:6)



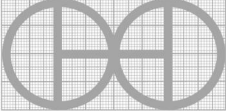
K (1:6)

Note: All units in mm.

PROJECT	CREATED BY	APPROVED BY	DATE	VERSION
Drill Press For Heavy Duty	E. Ceballos	A. Morillo	01/08/2021	1.0
PART NAME	FILE NAME	POS		
3d views	drill press.iam	A1		
DEVELOPED BY	REDESIGNED BY	DOC. TYPE	MATERIAL	QUANTITY
Popular Mechanics	OHO e.V. 	Assembly		1
		LICENCE	SCALE	SHEET
		CC-BY-SA 4.0	1:15	1 / 20

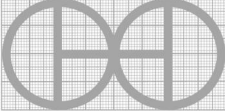


Note: All units in mm.

PROJECT	CREATED BY	APPROVED BY	DATE	VERSION
Drill Press For Heavy Duty	E. Ceballos	A. Morillo	01/08/2021	1.0
PART NAME	FILE NAME			POS
Exploded 3d views	drill press.ipn			A2
DEVELOPED BY	REDESIGNED BY	DOC. TYPE	MATERIAL	QUANTITY
		Assembly		1
Popular Mechanics	OHO e.V.	LICENCE	SCALE	SHEET
		CC-BY-SA 4.0	1:15	2 / 20

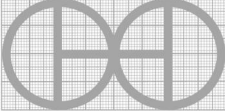
Parts list

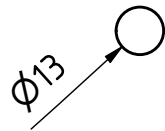
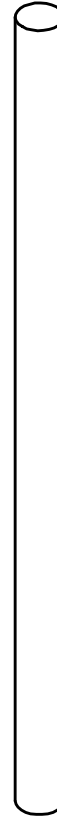
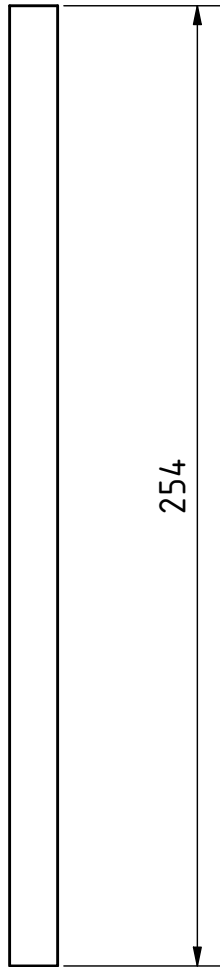
POS	QTY	PART NAME	FILE NAME	PART TYPE	SPECIFICATIONS	SHEET
A1	1	3d views	drill press.iam			1
A2	1	Exploded 3d view	drill press.ipn			2
B1		Parts list	part list.csv			3
B2		Parts list	part list.csv			4
1	1	Pipe 2"	pipe 2".ipt	Standard	Steel C45	
2	2	Square head plugs	square head plugs.ipt	Standard	Square head plugs ASME B16.11, steel C45	
3	2	Frame DIN1026-1 U 260	frame DIN 1026.ipt	Standard	Frame DIN1026-1 U 260- Large =304,8 mm	
4	2	Frame L90x90x10	frame L90x90x10.ipt	Standard	Frame ISO 657-1-L90x90x10. Large= 260 mm	
5	1	Shaft I 1/2"	shaft I 1/2".ipt	Production	Steel C45	5
6	3	Bushing	bushing.ipt	Standard	Steel C45	
7	1	Shaft II 1/2"	shaft II 1/2".ipt	Production	Steel C45	6
8	9	Pulley 2"	pulley 2".ipt	Standard	Pulley canal V 2", steel C45	
9	1	Pulley motor A	pulley motor A.ipt	Standard	Pulley canal V, steel C45	
10	5	Electric motor	electric motor.ipt	Standard	Electric motor 1/2 hp	
11	1	V-Belt motor	belt V.ipt	Standard	V- Belt, ANSI/RMA IP-20 A26	
12.0	1	Yoke	yoke.iam	Production		7
12.1	1	Yoke part A	yoke part A.ipt	Production	Steel C45	8
12.2	1	Yoke part B	yoke part B.ipt	Production	Steel C45	9
13	2	Pulley V, group 2",4",6",8"	pulley group.ipt	Standard	Steel C45	
14	2	Bearing (SKF 7100)	bearing (SKF 7100)	Standard	Bearing (SKF 7100)	
15	50"	Pipe 1" (ASME B36.10 M)	Pipe 1".ipt	Standard	Steel C45	
16	1	Drill spindle	drill spindle.ipt	Production	Steel C45	10
17	1	Pipe 1" with hole	Pipe 1" with hole.ipt	Production	Steel C45	11
18	1	Elbow modified (ASME B16.11)	Elbow modified.ipt	Production	Steel C45	12
19	1	Bearing (ANSI 16.2-25x47x14)	Bearing.ipt	Standard	Bearing (ANSI/AFBMA 16.1-25x47x14)	
20	1	Pipe yoke	pipe yoke.ipt	Production	Steel C45	13
21	2	Bushing 7/8"	bushing 7/8".ipt	Standard	Steel C45	
22	10	Screw (AS 1110-M8x12)	screw (AS 110-M8x12).ipt	Standard	Steel C45	
23	1	Geared chuck	geared chuck.ipt	Standard	Steel C45	
24	1	Pipe 2"	pipe 2".ipt	Standard	Steel C45	
25	2	Bushing (ANSI/ASME B16.15)	bushing (ANSI/ASME B16.15)	Standard	Steel C45	

PROJECT	CREATED BY	APPROVED BY	DATE	VERSION
Drill Press For Heavy Duty	E. Ceballos	A. Morillo	01/08/2021	1.0
PART NAME	FILE NAME			POS
Parts list	part list.csv			B1
DEVELOPED BY	REDESIGNED BY	DOC. TYPE	MATERIAL	QUANTITY
		Parts list		
Popular Mechanics	OHO e.V.	LICENCE	SCALE	SHEET
		CC-BY-SA 4.0		3 /20

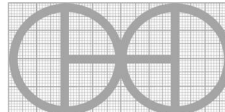
Parts list

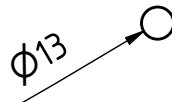
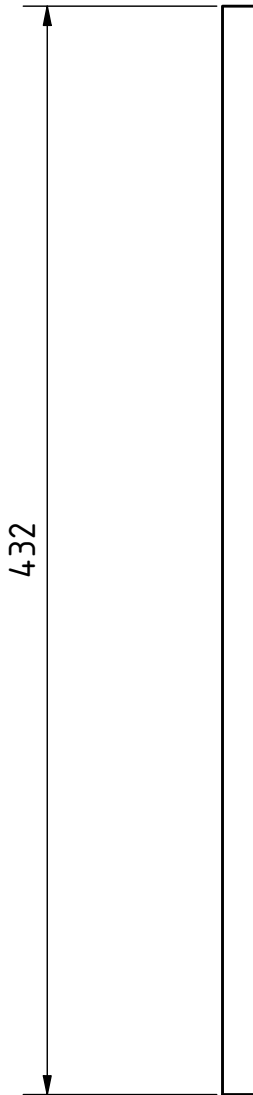
POS	QTY	PART NAME	FILE NAME	PART TYPE	SPECIFICATIONS	SHEET
26	1	Pipe 1 1/4" (ASTM D 1785)	Pipe 1 1/4".ipt	Standard	Steel C45	
27	1	Shaft 1/2"	shaft 1/2".ipt	Production	Steel C45	14
28	1	Hub	hub.ipt	Production	Steel C45	15
29	4	Hub bar 1/2"	hub bar 1/2".ipt	Standard	Steel C45	
30	4,25"	Pipe 3/4" (ASME B36.10)	Pipe 3/4".ipt	Standard	Steel C45	
31	1	Pipe coupling 3/4" (ASME B16.11)	Pipe coupling 3/4".ipt	Production	Steel C45	16
32	1	V-Belt trapezoidal	Belt trapezoidal.ipt	Standard	V- Belt trapezoidal, ANSI/RMA IP-20 A26	
33	1	Roller chain ANSI 40	Roller chain.ipt	Standard	Roller chain (ANSI 40)	
34	1	Pinion	pinion.ipt	Standard	Steel C45	
35	2	keys	keys.ipt	Production	Steel C45	17
36	10	Screw (AS 1110-M8x40)	screw.ipt	Standard	Steel C45	
37	1	Dlamp	clamp.ipt	Standard	Steel C45	
38	10	Screw (AS 1110-M6x25)	Screw M6x25.ipt	Standard	Steel C45	
39	1	Extension spring	Extension spring.ipt	Standard	Steel C45	
40.0	1	Pipe central chain and washer	pipe central chain and washer.iam	Production		18
40.1	1	Pipe central chain	pipe central chain.ipt	Production	Steel C45	19
40.2	2	Washer	washer.ipt	Production	Steel C45	20
41	2	Flange 2" ASME B16.5 class 300	flange 2" .ipt	Standard	Steel C45	
42	3	Pipe 2" (ASME B36.10)	pipe 2".ipt	Standard	Steel C45	
43	2	Cross 2" B16.3 class 300	cross 2".ipt	Standard	Steel C45	
44	1	Plug 2" B16.11	plug 2".ipt	Standard	Steel C45	
45	1	Pipe 1 3/4" (ASME B16.10)	pipe 1 3/4".ipt	Standard	Steel C45	
46	1	Reducer female 1 3/4"- 1" (B16.11)	reducer female.ipt	Standard	Steel C45	
47	1	Pipe 1" (ASME B16.10)	pipe 1".ipt	Standard	Steel C45	
48	1	Cross 1" B16.3 class 300	cross 1".ipt	Standard	Steel C45	
49	1	T 1" B16.3	t 1".ipt	Standard	Steel C45	
50	1	Eelbow 1" B16.3 class 300	elbow 1".ipt	Standard	Steel C45	

PROJECT		CREATED BY		APPROVED BY		DATE		VERSION		
Drill Press For Heavy Duty		E. Ceballos		A. Morillo		01/08/2021		1.0		
PART NAME			FILE NAME					POS		
Part list			Part list.csv					B2		
DEVELOPED BY			REDESIGNED BY			DOC. TYPE		MATERIAL		QUANTITY
Popular Mechanics			 OHO e.V.			Part list				
						LICENCE		SCALE		SHEET
						CC-BY-SA 4.0				4 /20




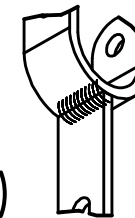
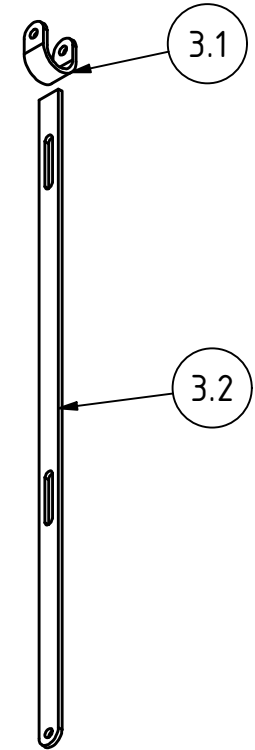
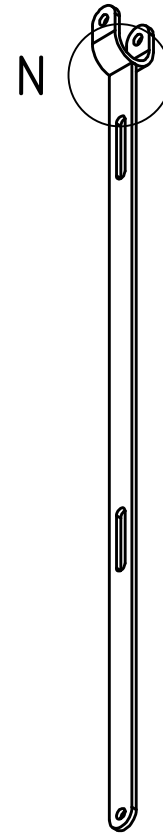
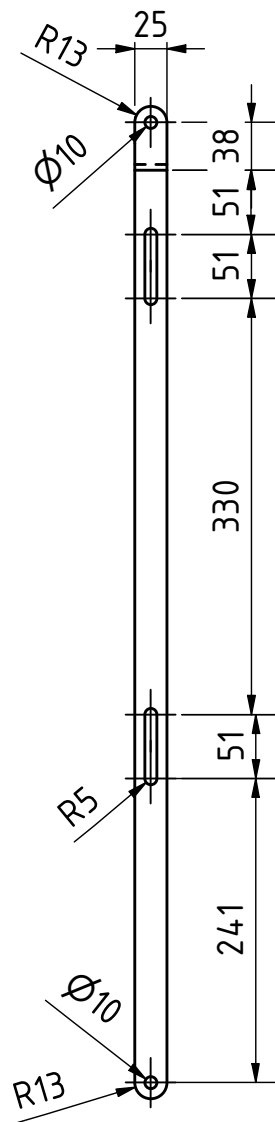
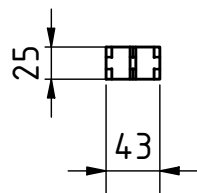
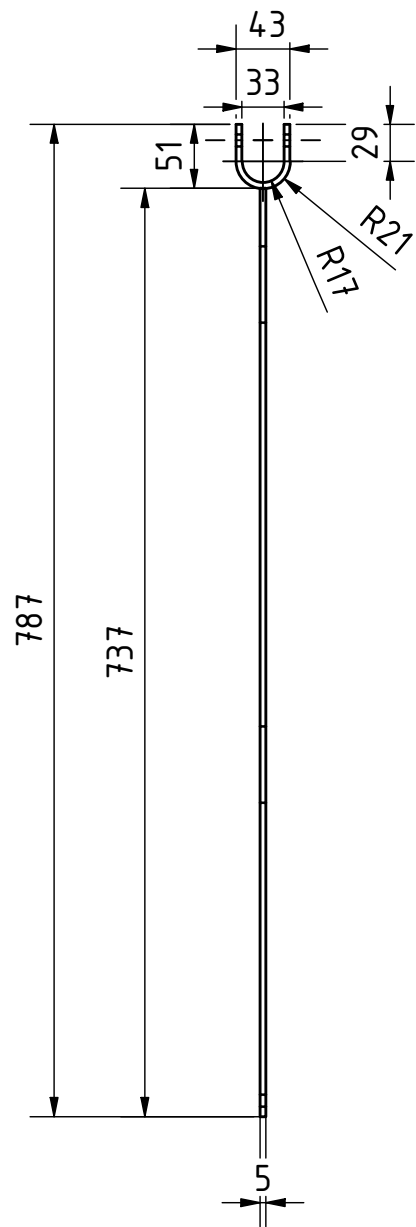
Note: All units in mm.

PROJECT	CREATED BY	APPROVED BY	DATE	VERSION
Drill Press For Heavy Duty	E. Ceballos	A. Morillo	01/08/2021	1.0
PART NAME	FILE NAME			POS
Shaft I 1/2"	shaft I 1/2".ipt			5
DEVELOPED BY	REDESIGNED BY	DOC. TYPE	MATERIAL	QUANTITY
Popular Mechanics	 OHO e.V.	PART	Steel C45	1
		LICENCE	SCALE	SHEET
		CC-BY-SA 4.0	1:2	5 /20




Note: All units in mm.

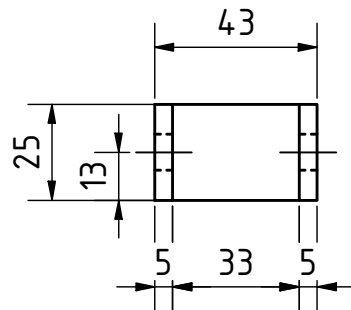
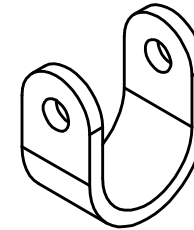
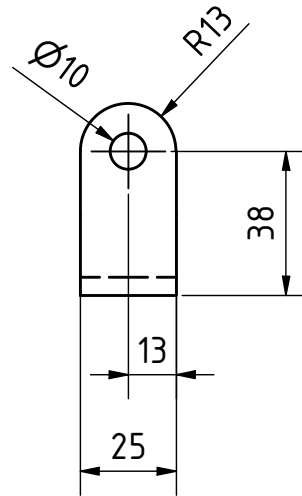
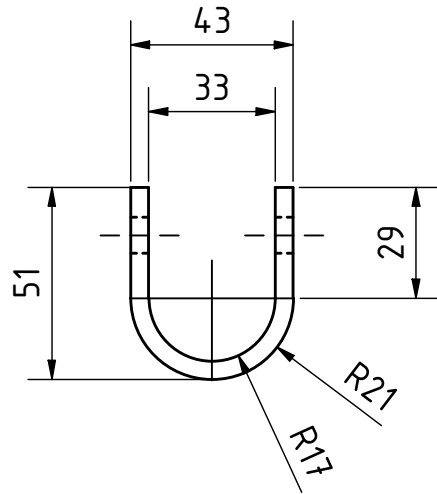
PROJECT	CREATED BY	APPROVED BY	DATE	VERSION
Drill Press For Heavy Duty	E. Ceballos	A. Morillo	01/08/2021	1.0
PART NAME	FILE NAME			POS
Shaft II 1/2"	shaft II 1/2".ipt			7
DEVELOPED BY	REDESIGNED BY	DOC. TYPE	MATERIAL	QUANTITY
Popular Mechanics	 OHO e.V.	PART	Steel C45	1
		LICENCE	SCALE	SHEET
		CC-BY-SA 4.0	1:3	6 /20




N (1 : 3)

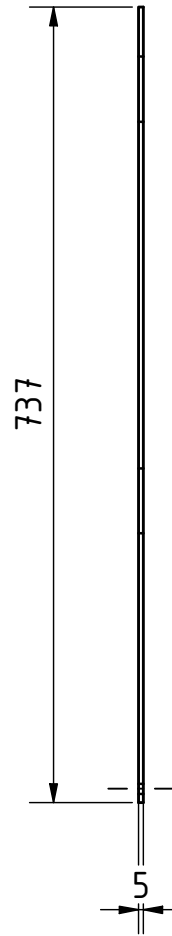
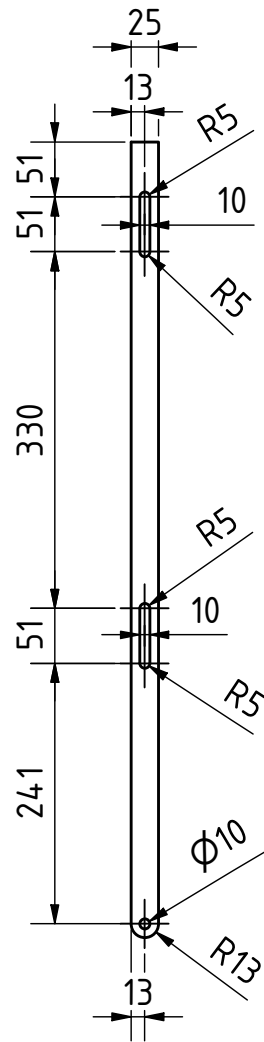
Note: all units in mm

PROJECT	CREATED BY	APPROVED BY	DATE	VERSION
Drill Press For Heavy Duty	E. Ceballos	A. Morillo	01/08/2021	1.0
PART NAME	FILE NAME			POS
Yoke	yoke.iam			12.0
DEVELOPED BY	REDESIGNED BY	DOC. TYPE	MATERIAL	QUANTITY
		ASSEMBLY	Steel C45	1
Popular Mechanics	OHO e.V.	LICENCE	SCALE	SHEET
		CC-BY-SA 4.0	1:6	7 /20




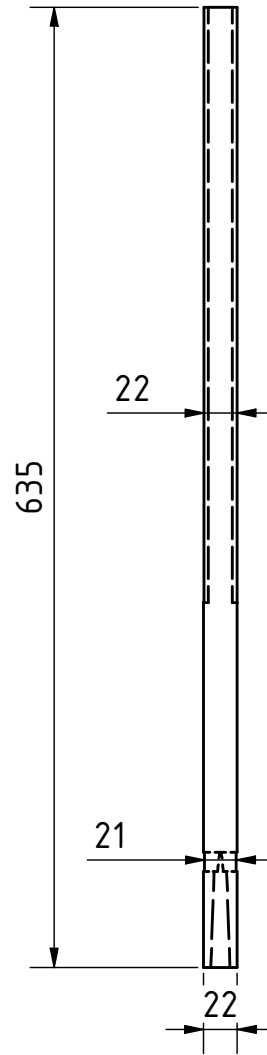
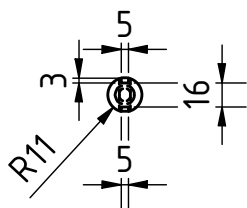
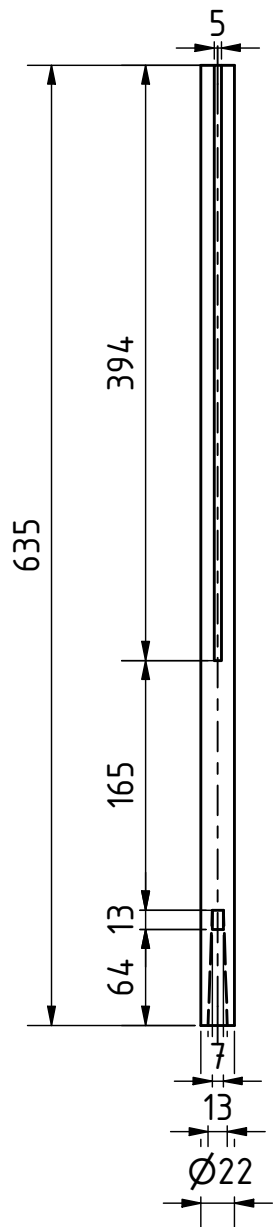
Note: all units in mm

PROJECT	CREATED BY	APPROVED BY	DATE	VERSION
Drill Press For Heavy Duty	E. Ceballos	A. Morillo	01/08/2021	1.0
PART NAME	FILE NAME			POS
Yoke part A	yoke part A			12.1
DEVELOPED BY	REDESIGNED BY	DOC. TYPE	MATERIAL	QUANTITY
		PART	Steel C45	1
Popular Mechanics	OHO e.V.	LICENCE	SCALE	SHEET
		CC-BY-SA 4.0	1:2	8 /20

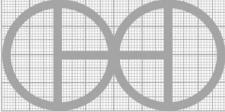


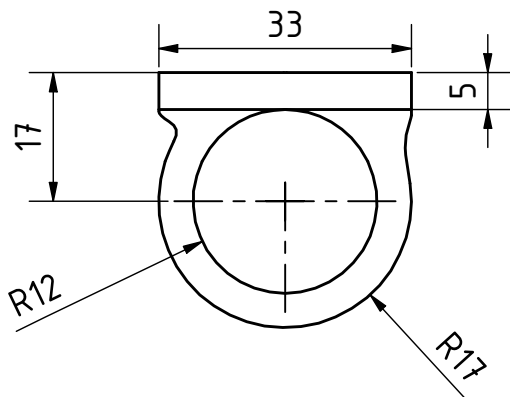
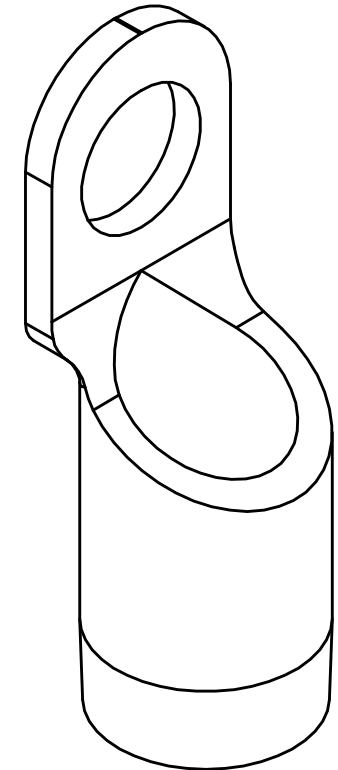
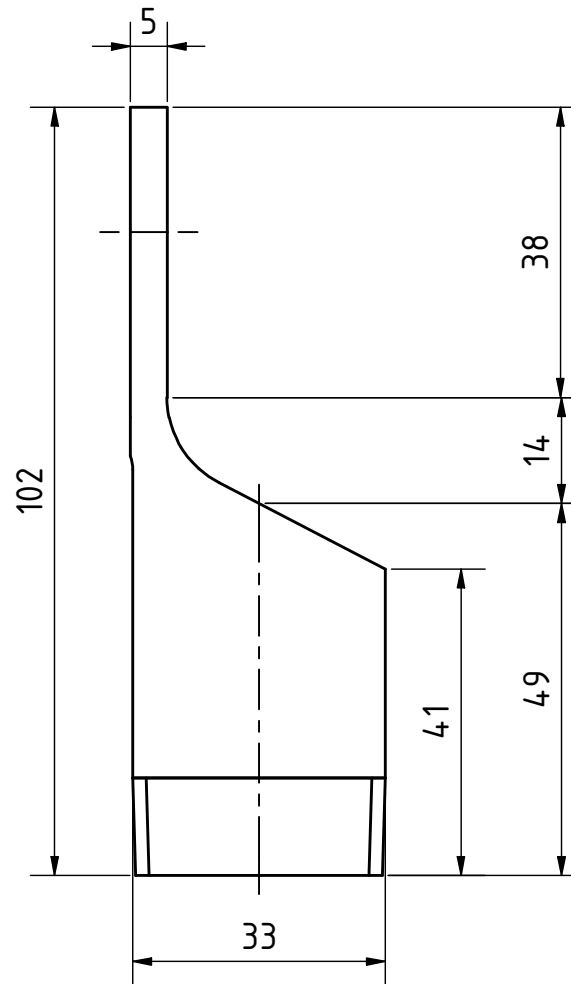
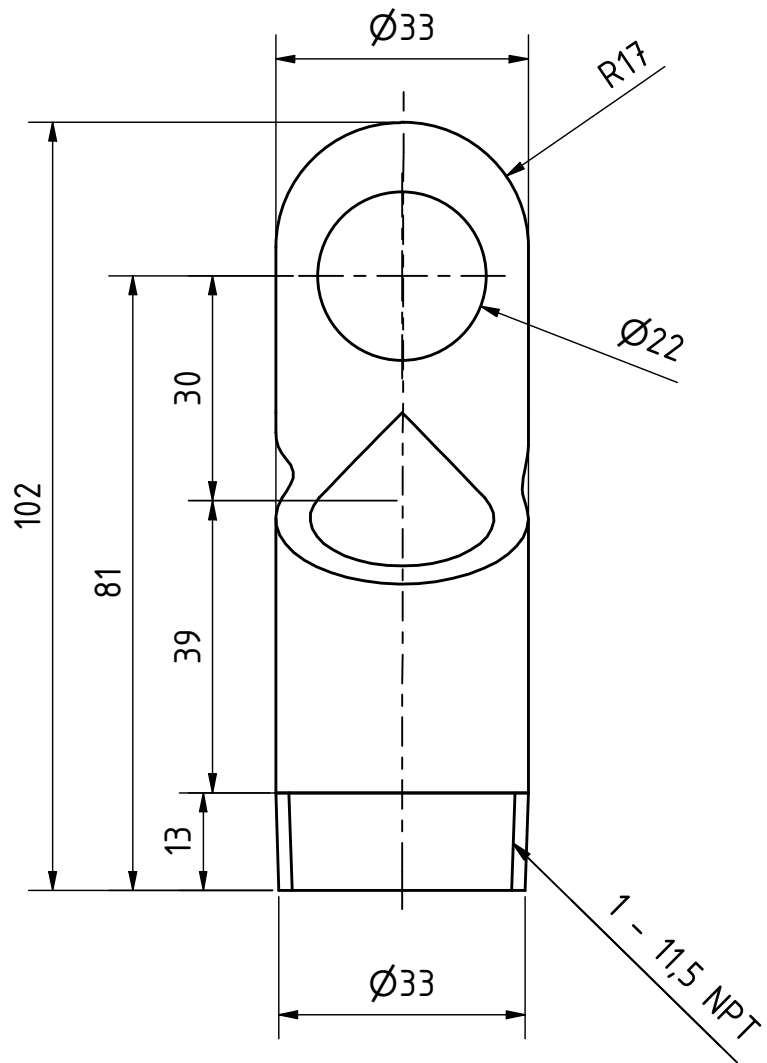
Note: all units in mm

PROJECT	CREATED BY	APPROVED BY	DATE	VERSION
Drill Press For Heavy Duty	E. Ceballos	A. Morillo	01/08/2021	1.0
PART NAME	FILE NAME			POS
Yoke part B	yoke part B.ipt			12.2
DEVELOPED BY	REDESIGNED BY	DOC. TYPE	MATERIAL	QUANTITY
		PART	Steel C45	1
Popular Mechanics	OHO e.V.	LICENCE	SCALE	SHEET
		CC-BY-SA 4.0	1:7	9 /20

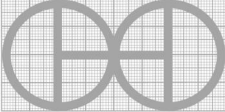


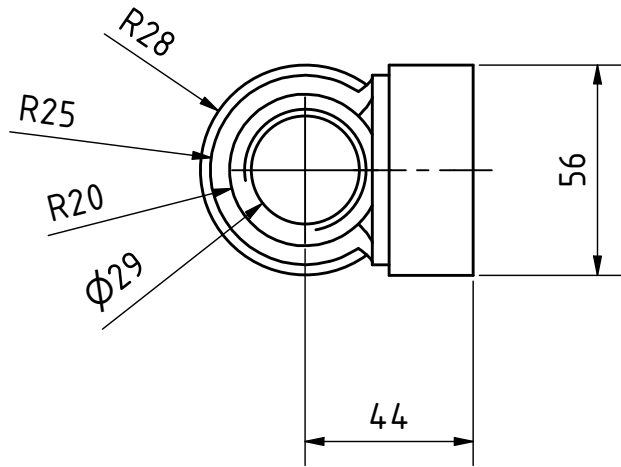
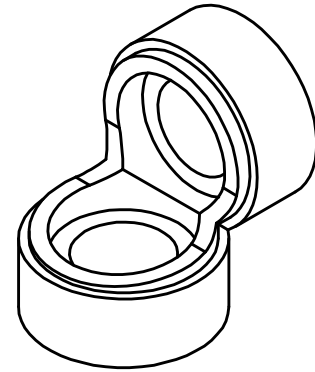
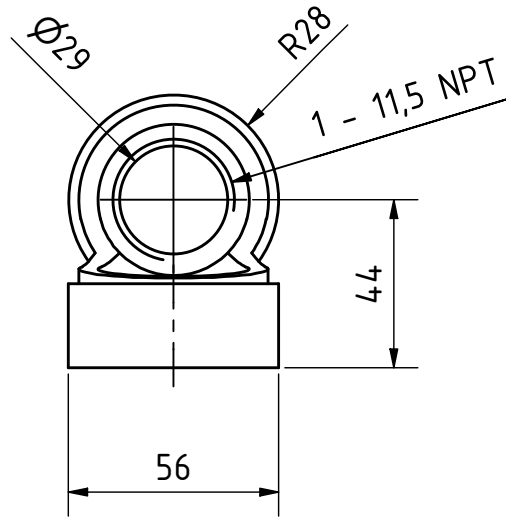
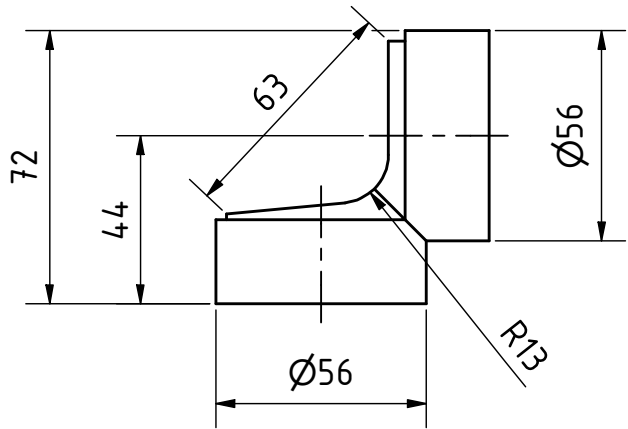
Note: Units. in mm

PROJECT	CREATED BY	APPROVED BY	DATE	VERSION
Drill Press For Heavy Duty	E. Ceballos	A. Morillo	01/08/2021	1.0
PART NAME	FILE NAME			POS
Drill spindle	drill spindle.ipt			16
DEVELOPED BY	REDESIGNED BY	DOC. TYPE	MATERIAL	QUANTITY
		PART	Steel C45	1
Popular Mechanics	OHO e.V.	LICENCE	SCALE	SHEET
		CC-BY-SA 4.0	1:10	10 /20




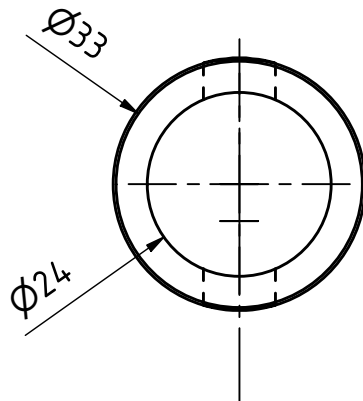
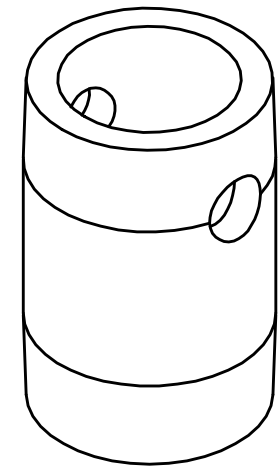
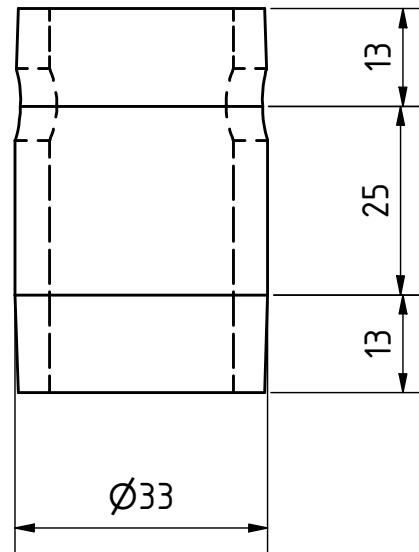
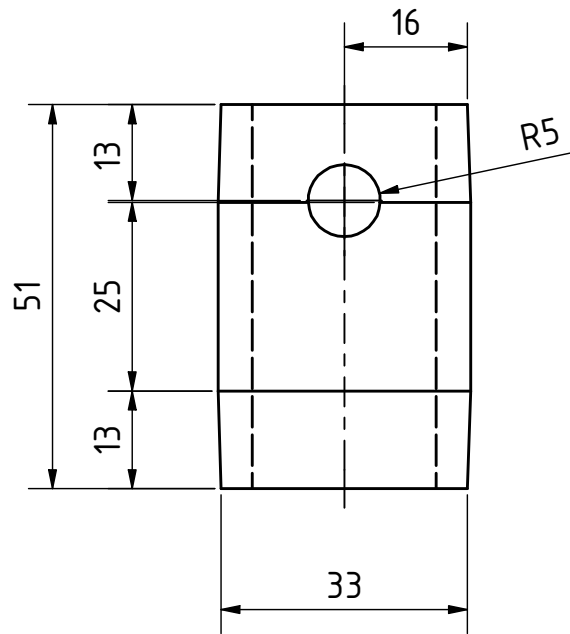
Note: all units. in mm

PROJECT	CREATED BY	APPROVED BY	DATE	VERSION
Drill Press For Heavy Duty	E. Ceballos	A. Morillo	01/08/2021	1.0
PART NAME	FILE NAME			POS
Pipe 1" with hole	pipe 1" with hole.ipt			17
DEVELOPED BY	REDESIGNED BY	DOC. TYPE	MATERIAL	QUANTITY
		PART	Steel C45	1
Popular Mechanics	OHO e.V.	LICENCE	SCALE	SHEET
		CC-BY-SA 4.0	1:1	11 /20




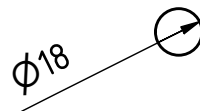
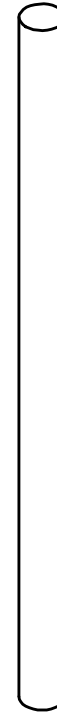
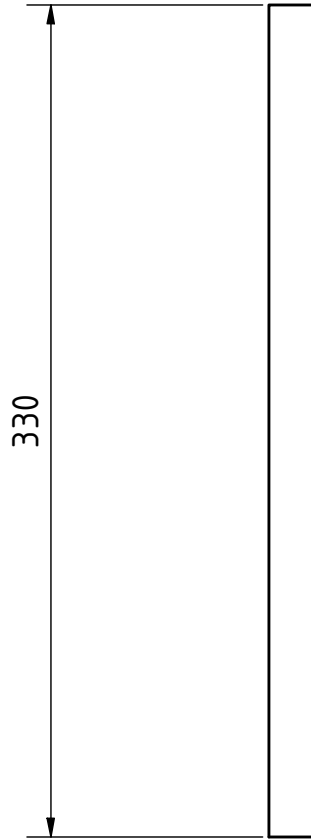
Note: all units. in mm

PROJECT	CREATED BY	APPROVED BY	DATE	VERSION
Drill Press For Heavy Duty	E. Ceballos	A. Morillo	01/08/2021	1.0
PART NAME	FILE NAME			POS
Elbow modified	elbow modified.ipt			18
DEVELOPED BY	REDESIGNED BY	DOC. TYPE	MATERIAL	QUANTITY
		PART	Steel C45	1
Popular Mechanics	OHO e.V.	LICENCE	SCALE	SHEET
		CC-BY-SA 4.0	1:2	12 /20

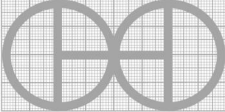


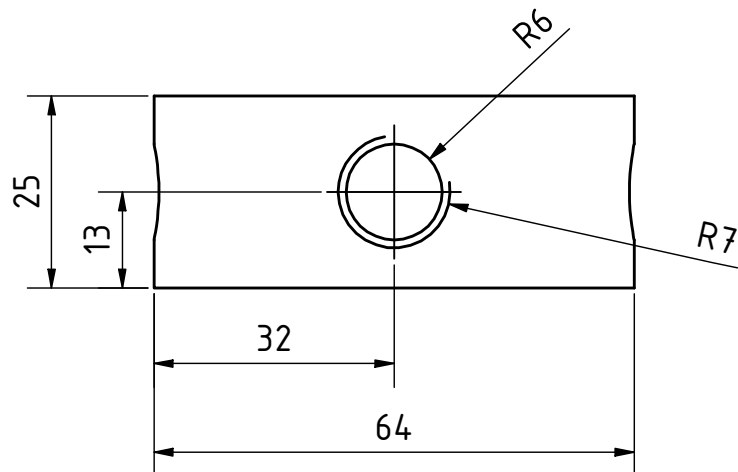
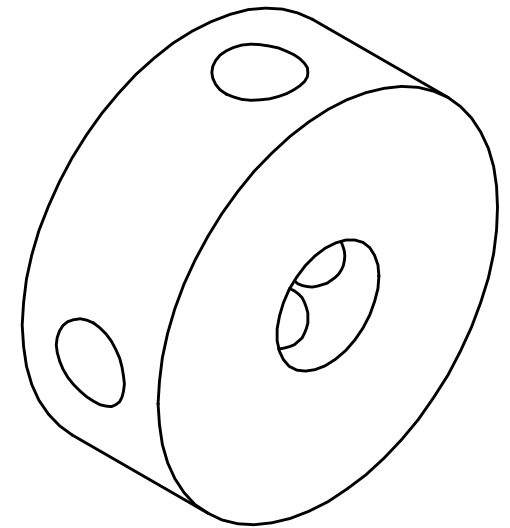
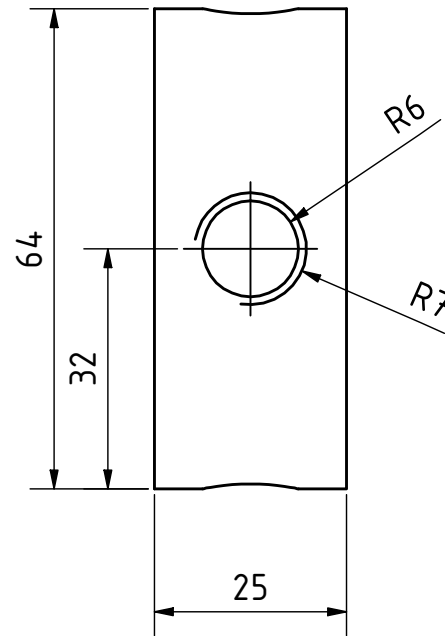
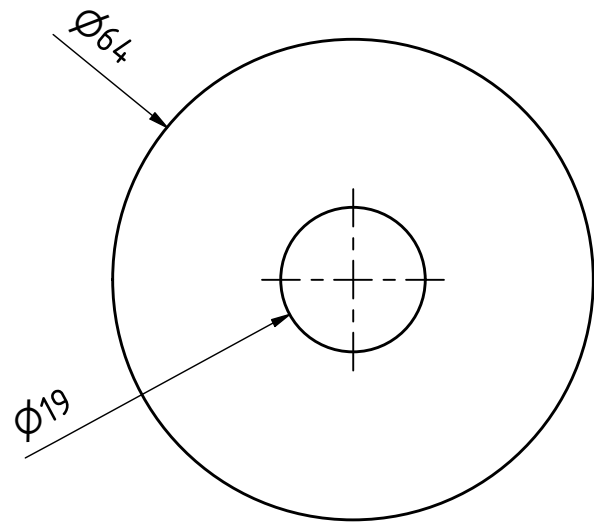
Note: all units in mm

PROJECT	CREATED BY	APPROVED BY	DATE	VERSION
Drill Press For Heavy Duty	E. Ceballos	A. Morillo	01/08/2021	1.0
PART NAME	FILE NAME			POS
Pipe 1" yoke	pipe 1" yoke.ipt			20
DEVELOPED BY	REDESIGNED BY	DOC. TYPE	MATERIAL	QUANTITY
		PART	Steel C45	1
		LICENCE	SCALE	SHEET
Popular Mechanics	OHO e.V.	CC-BY-SA 4.0	1:1	13 /20




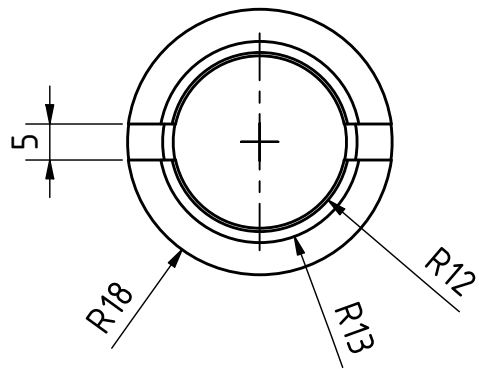
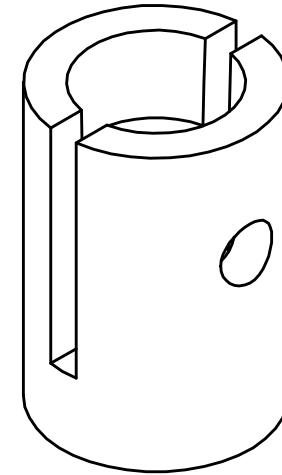
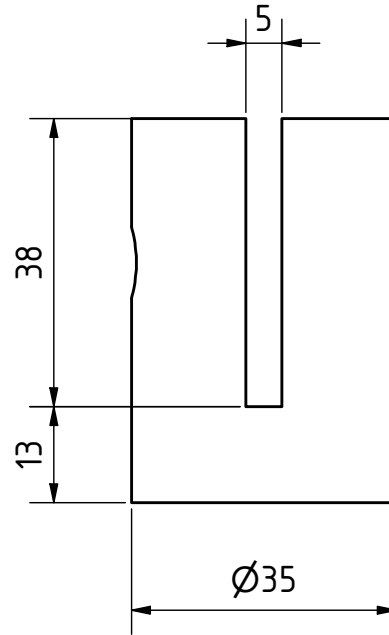
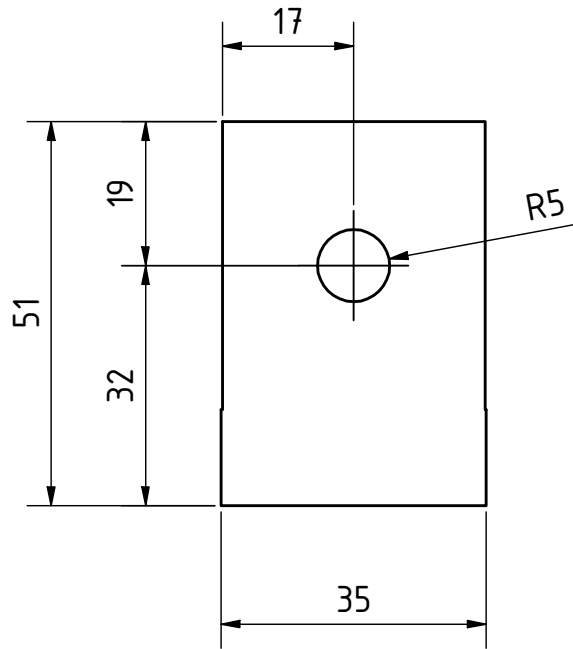
Note: all units in mm

PROJECT	CREATED BY	APPROVED BY	DATE	VERSION
Drill Press For Heavy Duty	E. Ceballos	A. Morillo	01/08/2021	1.0
PART NAME	FILE NAME			POS
Shaft 1/2"	shaft 1/2".ipt			27
DEVELOPED BY	REDESIGNED BY	DOC. TYPE	MATERIAL	QUANTITY
		PART	Steel C45	1
Popular Mechanics	OHO e.V.	LICENCE	SCALE	SHEET
		CC-BY-SA 4.0	1:3	14 /20

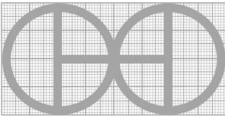


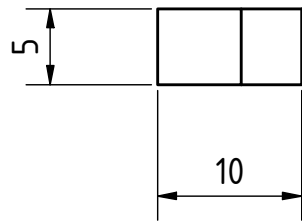
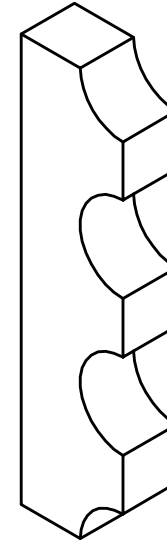
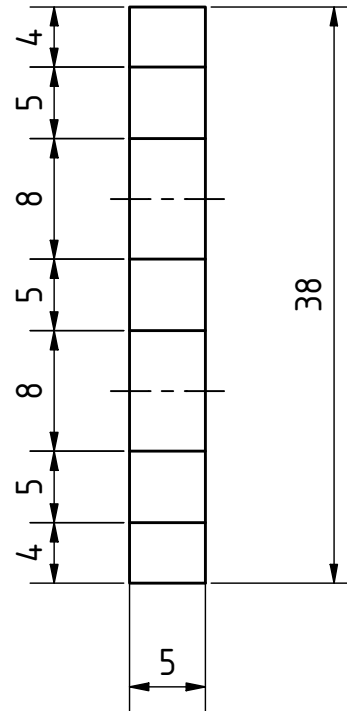
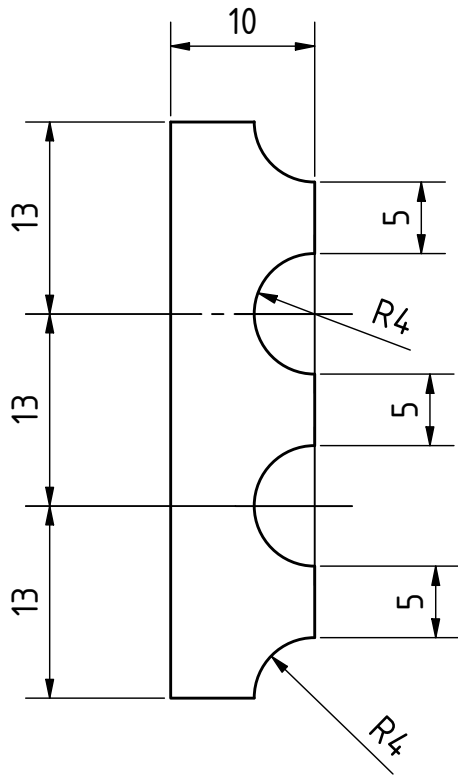
Note: all units in mm

PROJECT	CREATED BY	APPROVED BY	DATE	VERSION
Drill Press For Heavy Duty	E. Ceballos	A. Morillo	01/08/2021	1.0
PART NAME	FILE NAME			POS
Hub	hub.ipt			28
DEVELOPED BY	REDESIGNED BY	DOC. TYPE	MATERIAL	QUANTITY
		PART	Steel C45	1
Popular Mechanics	OHO e.V.	LICENCE	SCALE	SHEET
		CC-BY-SA 4.0	1:1	15 /20




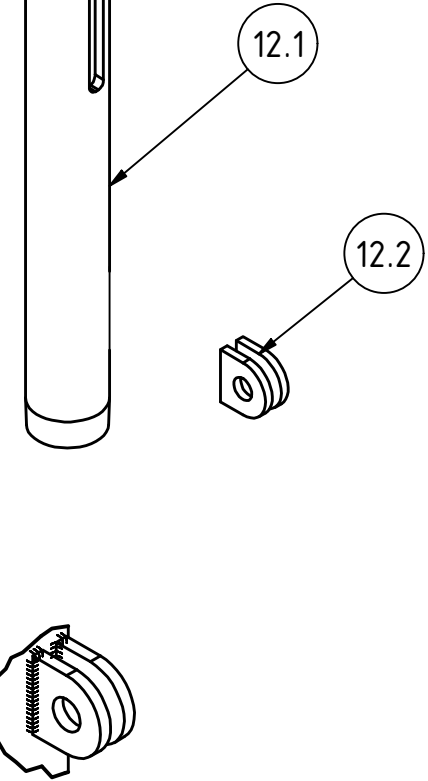
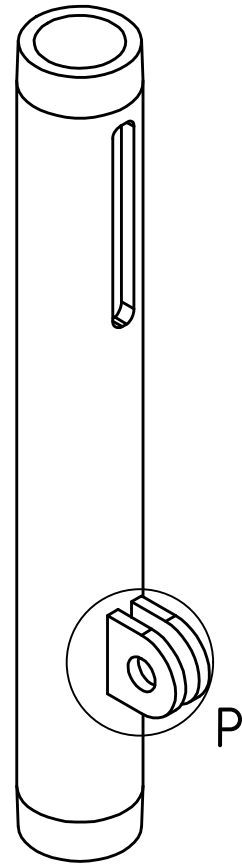
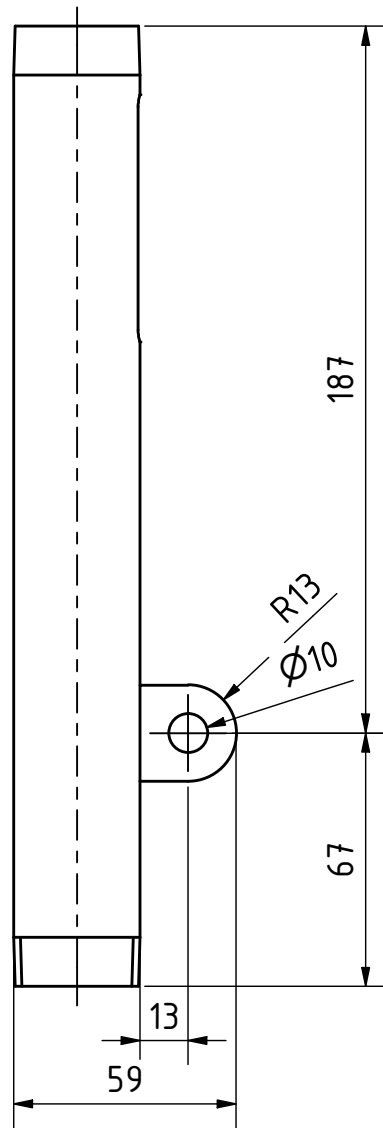
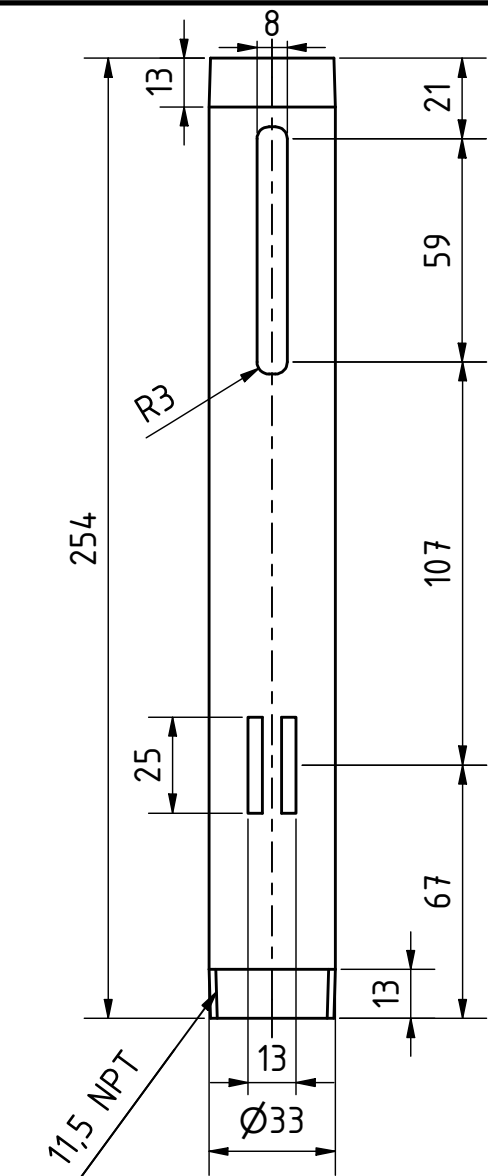
Note: all units in mm

PROJECT	CREATED BY	APPROVED BY	DATE	VERSION
Drill Press For Heavy Duty	E. Ceballos	A. Morillo	01/08/2021	1.0
PART NAME	FILE NAME			POS
Pipe coupling 3/4"	pipe coupling 3/4".ipt			31
DEVELOPED BY	REDESIGNED BY	DOC. TYPE	MATERIAL	QUANTITY
		PART	Steel C45	2
Popular Mechanics	OHO e.V.	LICENCE	SCALE	SHEET
		CC-BY-SA 4.0	1:1	16 /20



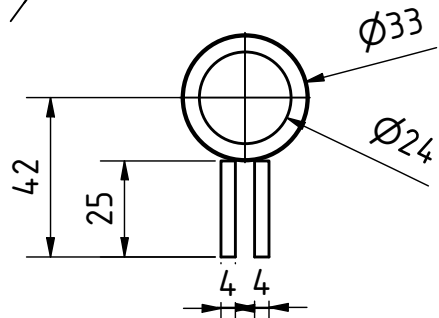
Note: all units. in mm

PROJECT	CREATED BY	APPROVED BY	DATE	VERSION
Drill Press For Heavy Duty	E. Ceballos	A. Morillo	01/08/2021	1.0
PART NAME	FILE NAME			POS
Key	key.ipt			35
DEVELOPED BY	REDESIGNED BY	DOC. TYPE	MATERIAL	QUANTITY
		PART	Steel C45	2
Popular Mechanics	OHO e.V.	LICENCE	SCALE	SHEET
		CC-BY-SA 4.0	2:1	17 /20

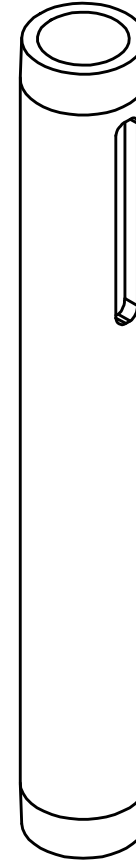
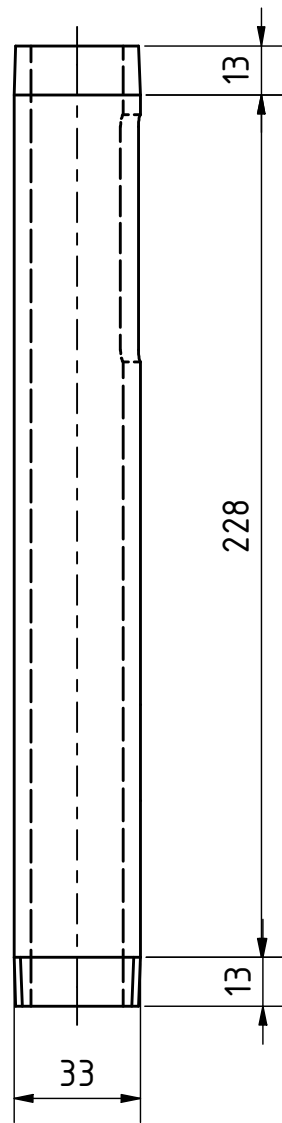
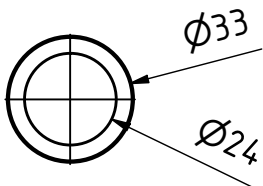
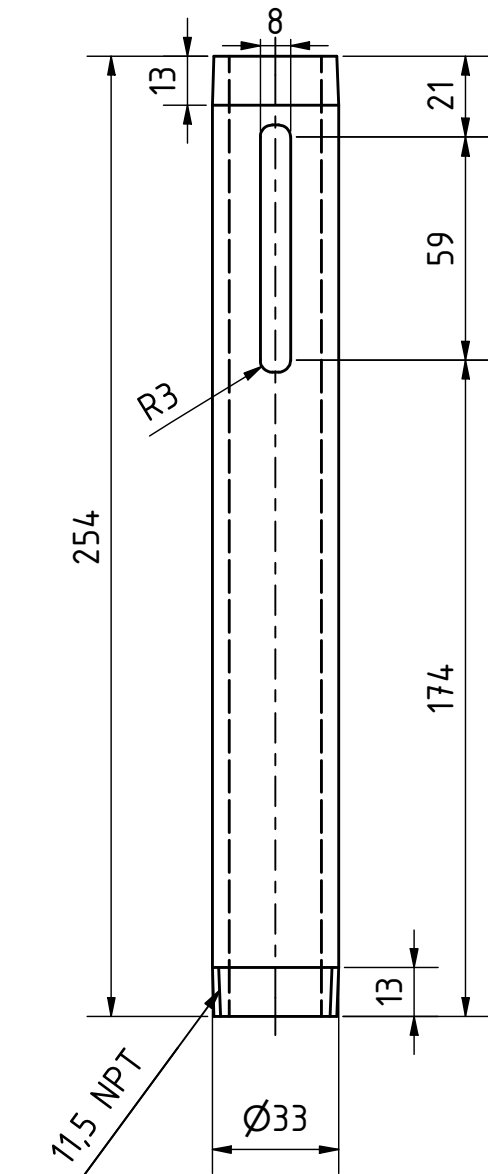


P (1 : 2)


Note: all units in mm

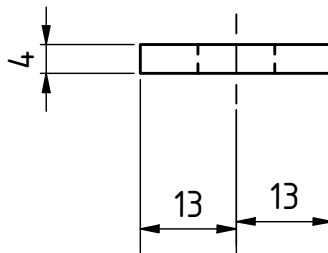
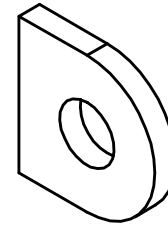
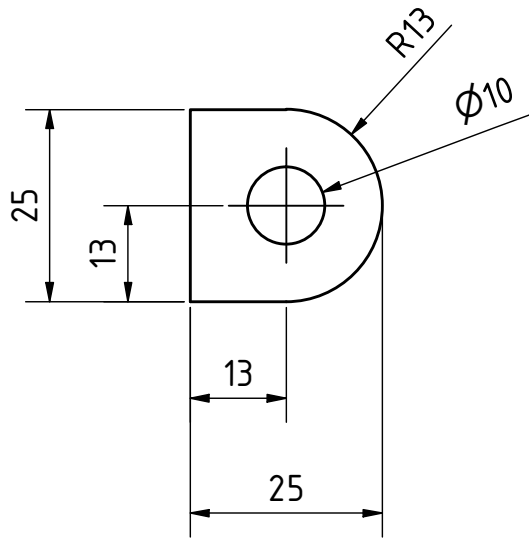


PROJECT	CREATED BY	APPROVED BY	DATE	VERSION
Drill Press For Heavy Duty	E. Ceballos	A. Morillo	01/08/2021	1.0
PART NAME	FILE NAME			POS
Pipe 1" central chain and washer	pipe 1" central chain and washer.iam			40.0
DEVELOPED BY	REDESIGNED BY	DOC. TYPE	MATERIAL	QUANTITY
Popular Mechanics	OHO e.V.	ASSEMBLY		1
		LICENCE	SCALE	SHEET
		CC-BY-SA 4.0	1:2	18 /20




Note: all units in mm

PROJECT	CREATED BY	APPROVED BY	DATE	VERSION
Drill Press For Heavy Duty	E. Ceballos	A. Morillo	01/08/2021	1.0
PART NAME	FILE NAME			POS
Pipe 1" central chain	pipe 1" central chain.ipt			40.1
DEVELOPED BY	REDESIGNED BY	DOC. TYPE	MATERIAL	QUANTITY
		PART	Steel C45	1
Popular Mechanics	OHO e.V.	LICENCE	SCALE	SHEET
		CC-BY-SA 4.0	1:2	19 /20



Note: all units in mm

PROJECT	CREATED BY	APPROVED BY	DATE	VERSION
Drill Press For Heavy Duty	E. Ceballos	A. Morillo	01/08/2021	1.0
PART NAME	FILE NAME			POS
Washer	washer.ipt			40.2
DEVELOPED BY	REDESIGNED BY	DOC. TYPE	MATERIAL	QUANTITY
		PART	Steel C45	2
		LICENCE	SCALE	SHEET
Popular Mechanics	OHO e.V.	CC-BY-SA 4.0	1:1	20 /20