

4

3

2

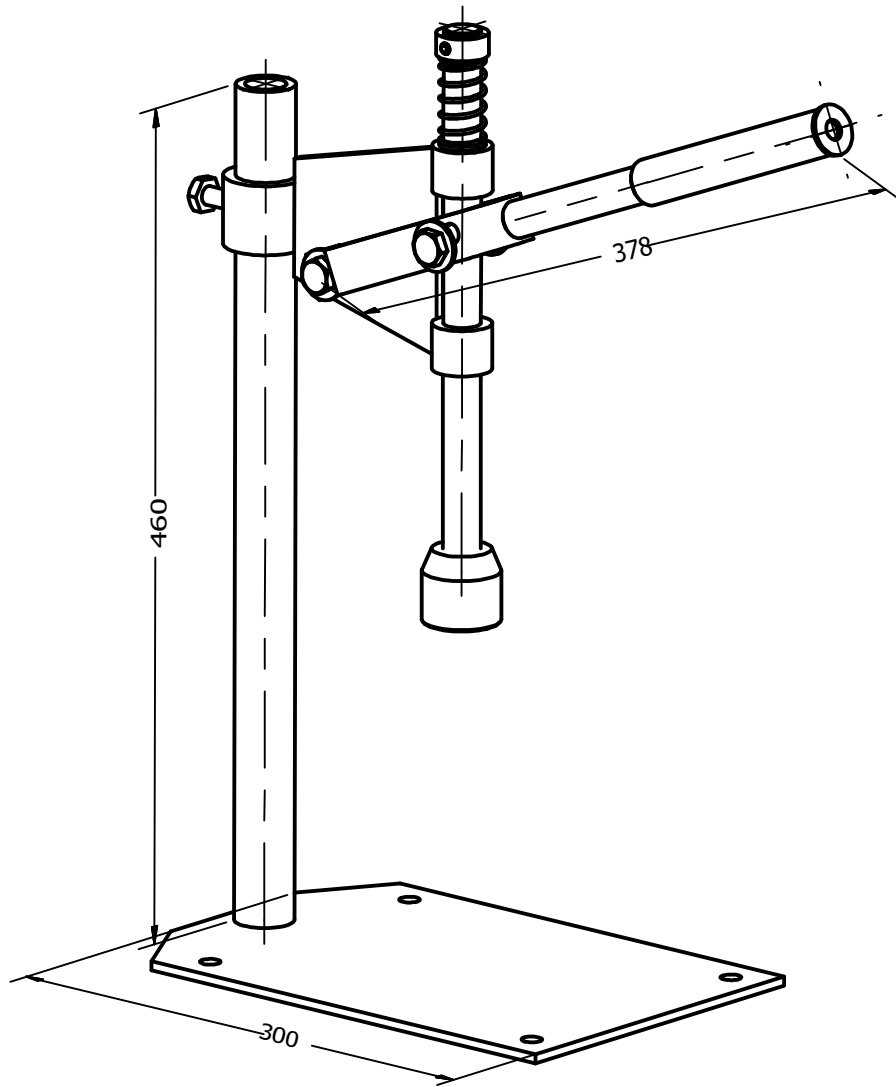
1


B

B

A

A



Project Crown cap machine		Created by D. Mosquera	Approved by D. Jeager			
Part Name Crown cap machine		Part Code A1	Document Type ASSEMBLY		Material	
Redesigned by  OPEN SOURCE ECOLOGY GERMANY	Original drawing from Practical ACTION	License CERN-OHL	File Name oseg_ccm_A1_cap-machine.iam		Version 1.0	Quantity
			Scale 1:6	Sheet 1	Date 16.11.20	

4

3

2

1

4

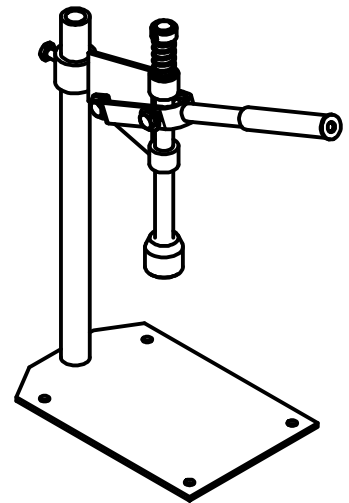
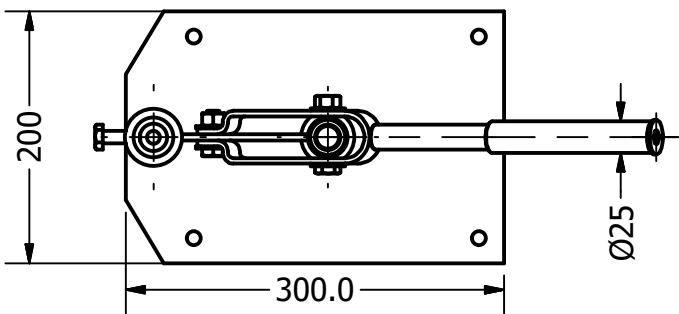
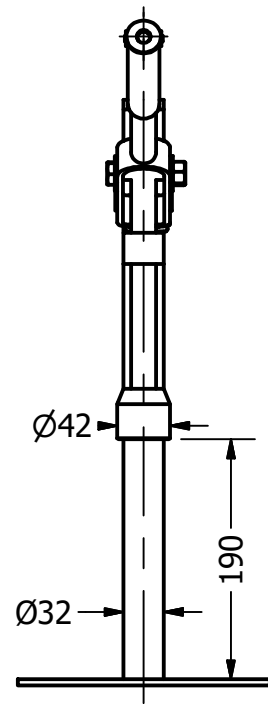
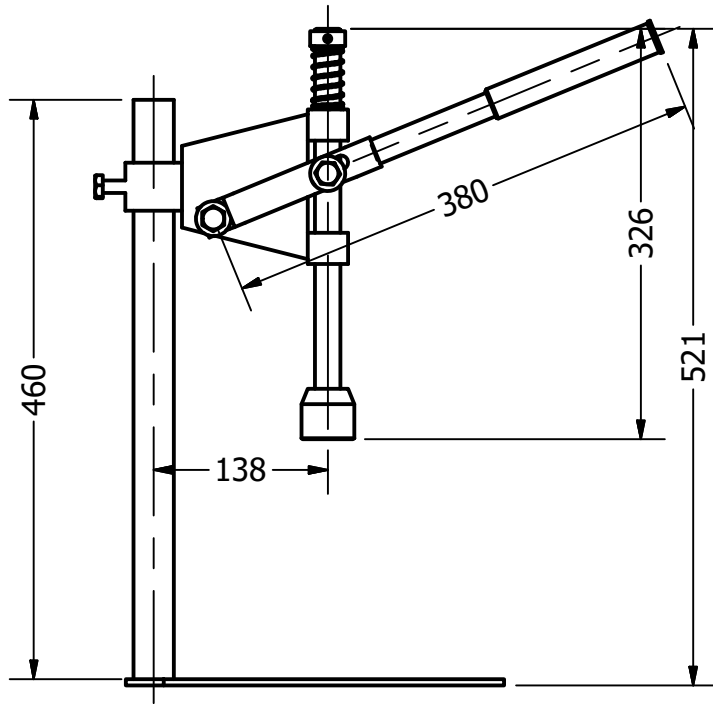
3

2

1


B

B



A

A

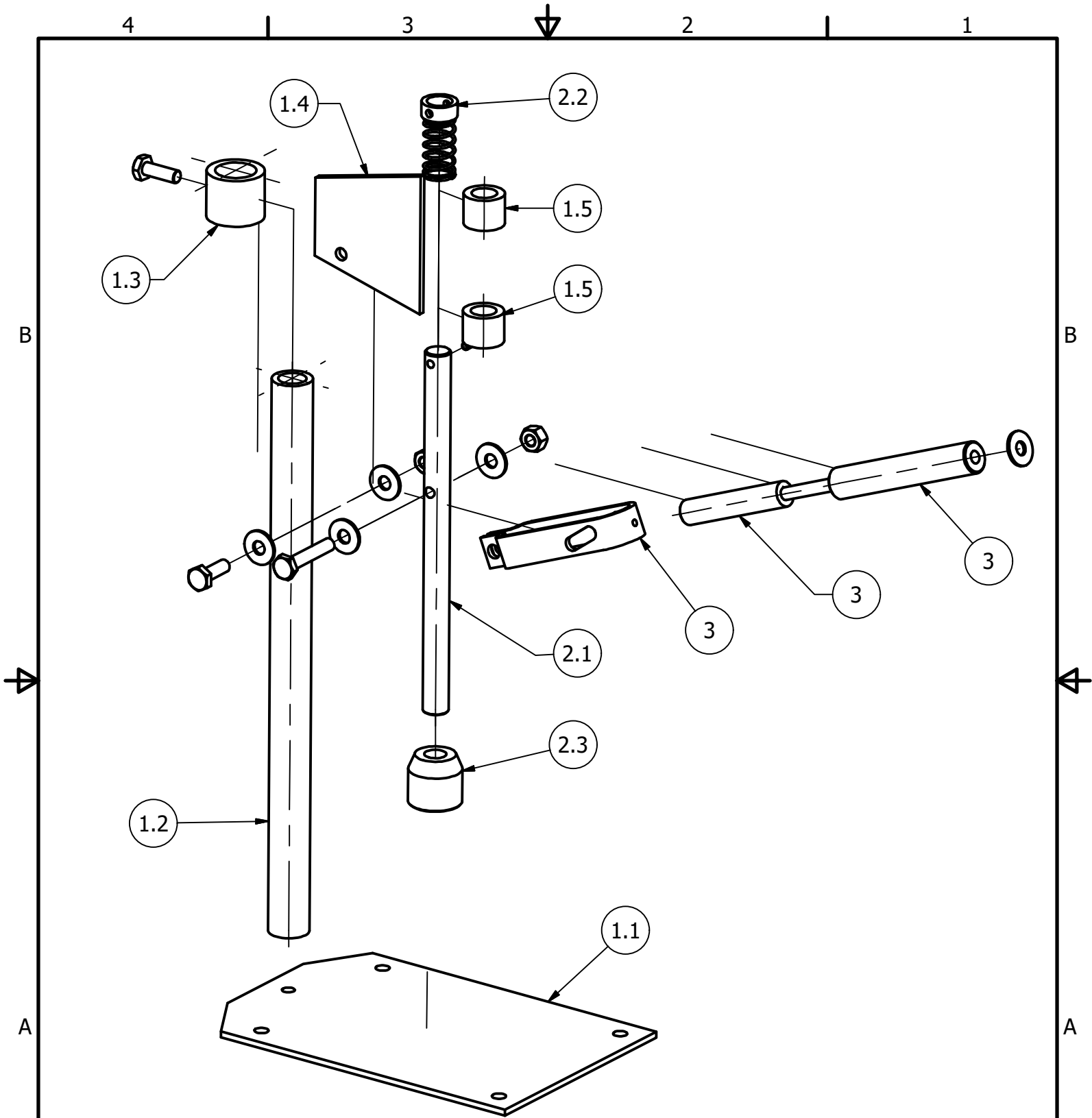
Project Crown cap machine		Created by D. Mosquera		Approved by D. Jeager	
Part Name Crown cap machine		Part Code A2	Document Type ASSEMBLY		Material
Redesigned by  OPEN SOURCE ECOLOGY GERMANY	Original drawing from Practical ACTION	License CERN-OHL	File Name oseg_ccm_A1_cap-machine.iam	Version 1.0	Quantity
			Scale 1:6	Sheet 2	Date 16.11.20


4

3


2

1



Project Crown cap machine		Created by D. Mosquera		Approved by D. Jeager	
Part Name Crown cap machine		Part Code A2		Document Type ASSEMBLY	
Redesigned by  OPEN SOURCE ECOLOGY GERMANY		Original drawing from Practical ACTION		License CERN-OHL	
		File Name oseg_cm_A2_cap-machine.ipn		Version 1.0	
		Scale 1:6		Quantity 3	
				Date 16.11.20	

Pos.	Pos. old	Qty.	Part name	File name (new)	Part type	Specifications	Sheet
A1			Cap machine	oseg_ccm_A1_cap-machine.iam	production		1
							2
A2			Cap machine presentation	oseg_ccm_A1_cap-machine.ipn	production		3
B			Cap machine parts-list	oseg_ccm_B_parts-list.			4
1			Base pedestal	oseg_ccm_1_base-pedestal.iam			5
1.1	1		base sheet	oseg_ccm_1.1_base-sheet.ipt	production	Steel ASTM A36	7
1.2	2		Column	oseg_ccm_1.2_column.ipt	production	Steel ASTM A36	8
1.3	3		Bush for height	oseg_ccm_1.3_bush-for-height.ipt	production	Steel ASTM A36	9
1.4	4		Braket	oseg_ccm_1.4_braket.ipt	production	Steel ASTM A36	10
1.5	5	2	Bush for shaft	oseg_ccm_1.5_Bush-for-shaft.ipt	production	Steel ASTM A36	11
1.6	13	2	Screw hexagon head		Standart	ISO- M10 x 30	
1.7	16	2	Hex nut		Standart	Heavy Hex Nut Metric M10x1.75	
2			shaft for caps	oseg_ccm_2_shaft-for-caps.iam			12
2.1	6		Shaft	oseg_ccm_2.1_shaft.ipt	production	Steel ASTM A36	14
2.2	7		shaft stop	oseg_ccm_2.2_shaft-stop.ipt	production	Steel ASTM A36	15
2.3	8		cap holder	oseg_ccm_2.3_cap-holder.ipt	production	Steel ASTM A36	16
2.4	18		splint pin	oseg_ccm_2.4_splint-pin.ipt	Standart	dia 3 x 20	17
2.5	12		spring	oseg_ccm_2.5_spring.ipt	Standart	dia 20-1-76	18
3			fork lever	oseg_ccm_3_fork-lever.iam			19
3.1	9		fork	oseg_ccm_3.1_fork.ipt	production	Steel ASTM A36	21
3.2	10		lever	oseg_ccm_3.2_lever.ipt	production	Steel ASTM A36	22
3.3	11		handler	oseg_ccm_3.3_handler.ipt	production	Steel ASTM A36	23
3.4	14-15	1	Screw hexagon head		Standart	ISO- M10 x 50	
3.5	16	1	Hex nut		Standart	Heavy Hex Nut Metric M10x1.75	
3.6	17	2	Plain washers		Standart	ISO -ST 10-140 HV	

Project Crown cap machine		Created by D. Mosquera		Approved by D. Jeager	
Part Name Crown cap machine		Part Code B1	Document Type List Part		Material
Redesigned by  OPEN SOURCE ECOLOGY GERMANY	Original drawing from Practical ACTION	License CERN-OHL	File Name		Version 1.0
			Scale	Sheet 4	Date 16.11.20

4 | 3 | 2 | 1

B

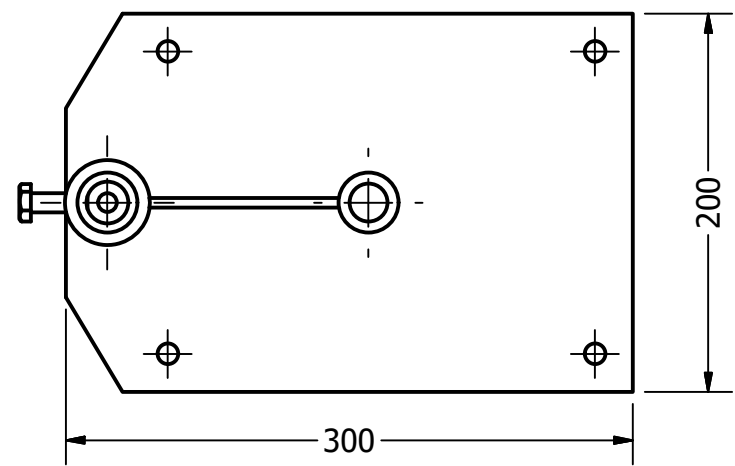
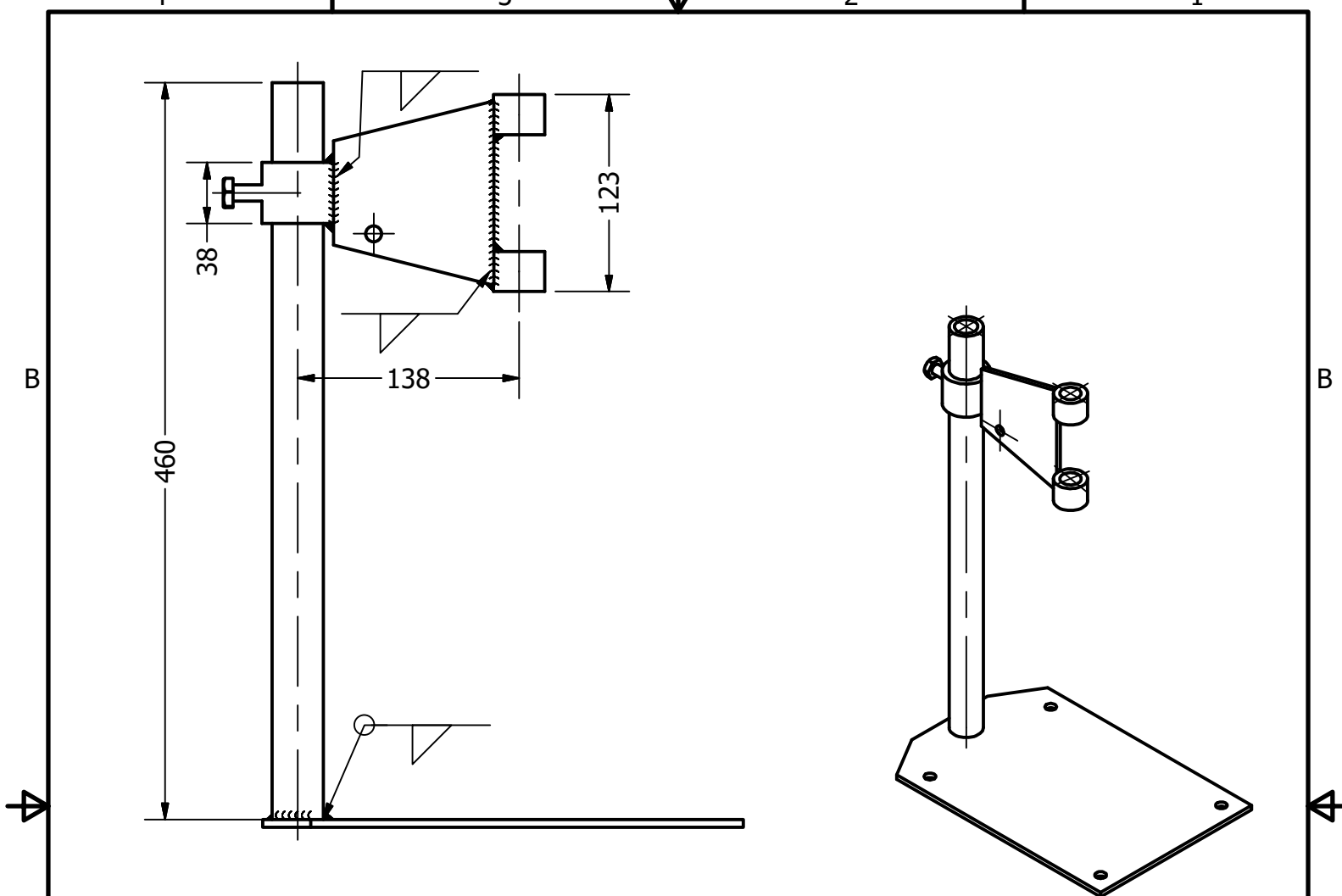
B


B

B

A

A



Project Crown cap machine		Created by D. Mosquera		Approved by D. Jeager	
Part Name base pedestal		Part Code 1		Document Type ASSEMBLY	
Redesigned by  OPEN SOURCE ECOLOGY GERMANY		Original drawing from Practical ACTION		License CERN-OHL	
		File Name oseg_ccm_1_base-pedestal.iam		Version 1.0	
		Scale 1:4		Quantity 5	
				Date 16.11.20	

4 | 3 | 2 | 1

4

3

2

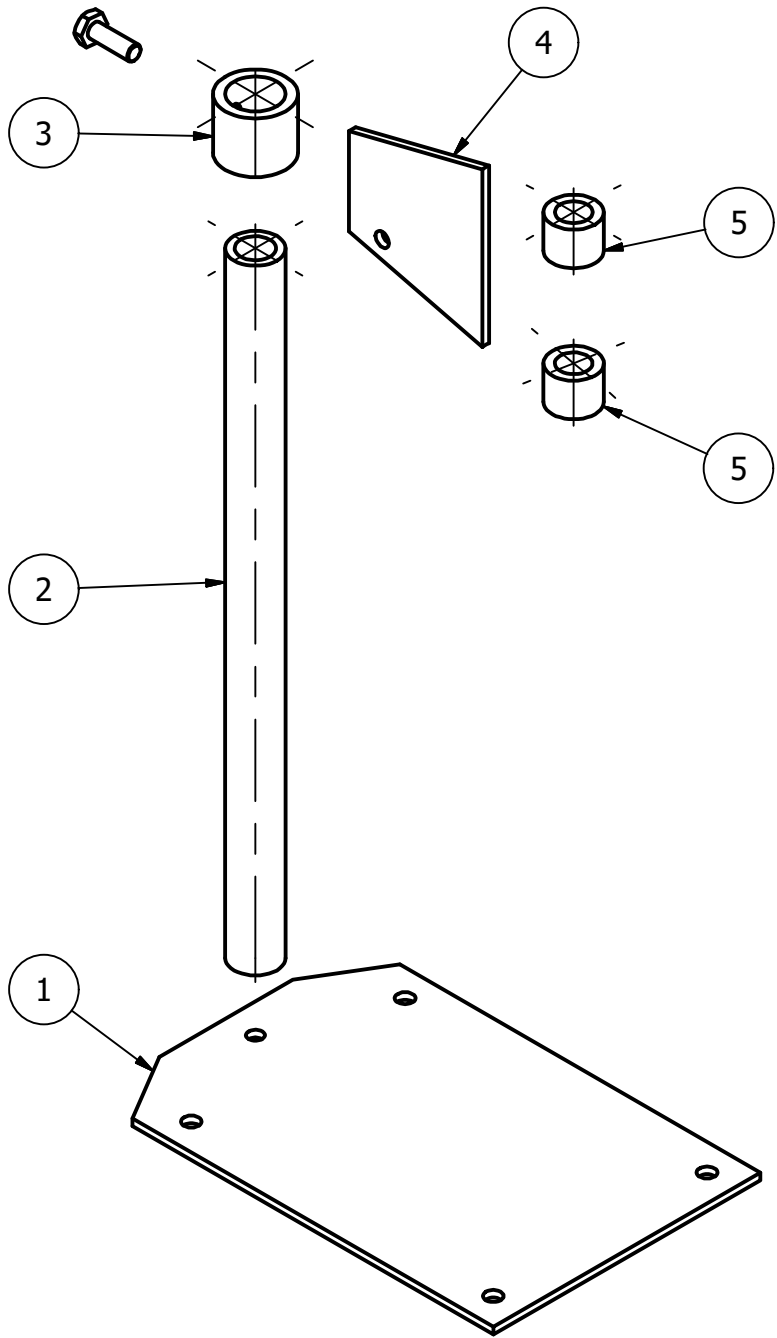
1


B

B

A

A



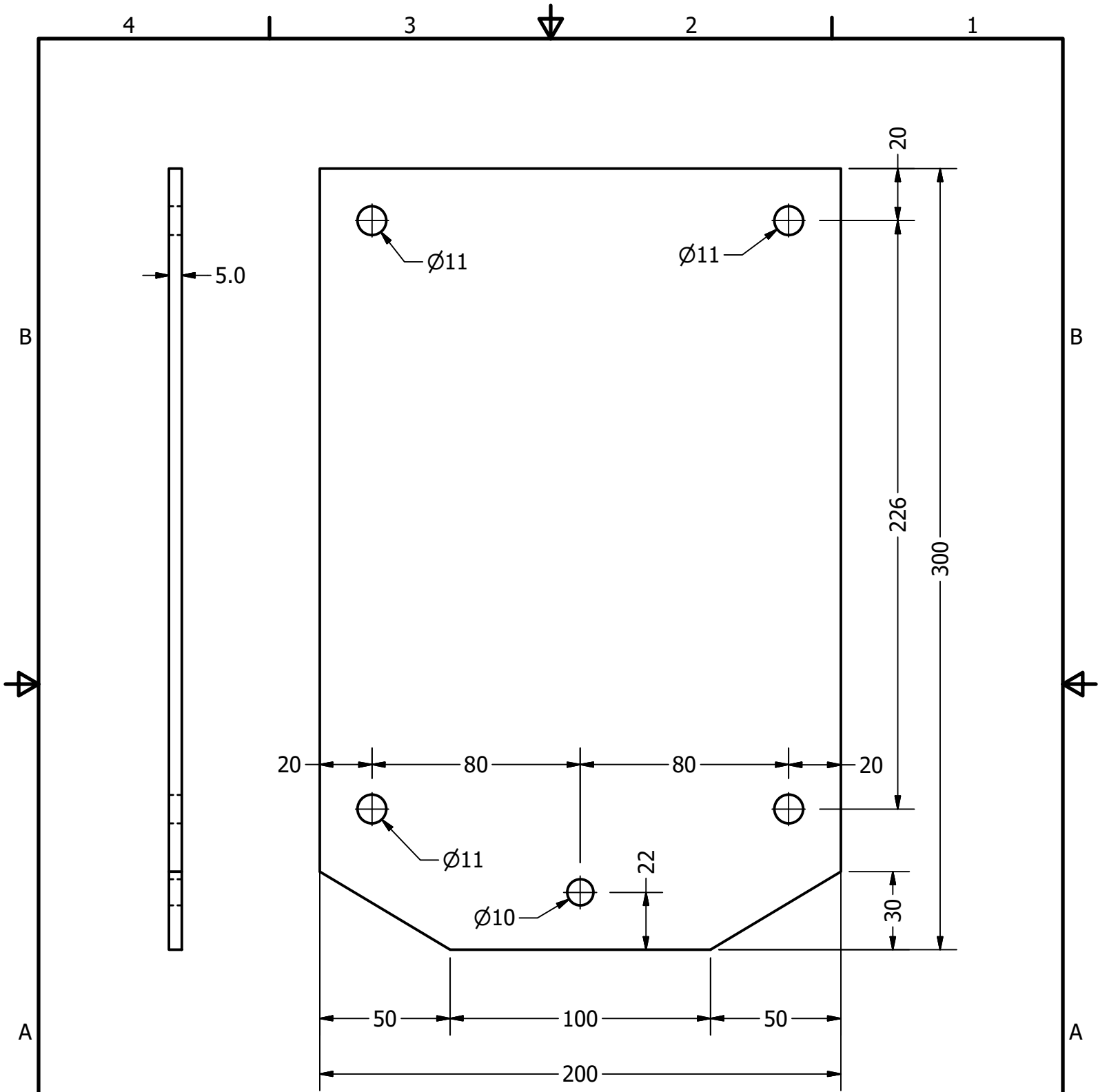
Project Crown cap machine		Created by D. Mosquera	Approved by D. Jeager		
Part Name base pedestal		Part Code 1	Document Type ASSEMBLY	Material	
Redesigned by  OPEN SOURCE ECOLOGY GERMANY	Original drawing from Practical ACTION	License CERN-OHL	File Name oseg_ccm_1_base-pedestal.iam	Version 1.0	Quantity
			Scale 1:4	Sheet 6	Date 16.11.20


4

3

2

1



Project Crown cap machine		Created by D. Mosquera		Approved by D. Jeager	
Part Name base sheet		Part Code 1.1		Document Type part	
Redesigned by  OPEN SOURCE ECOLOGY GERMANY		Original drawing from Practical ACTION		License CERN-OHL	
				File Name oseg_ccm_1.1_base-sheet.ipt	
				Version 1.0	
				Quantity	
				Scale 1:2	
				Sheet 7	
				Date 16.11.20	

4

3

2

1

B

B

A

A

4

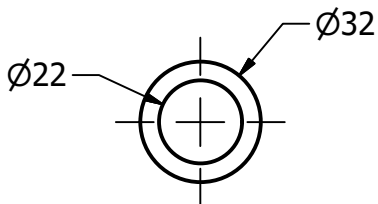
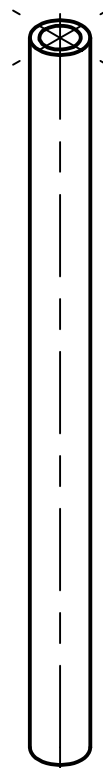
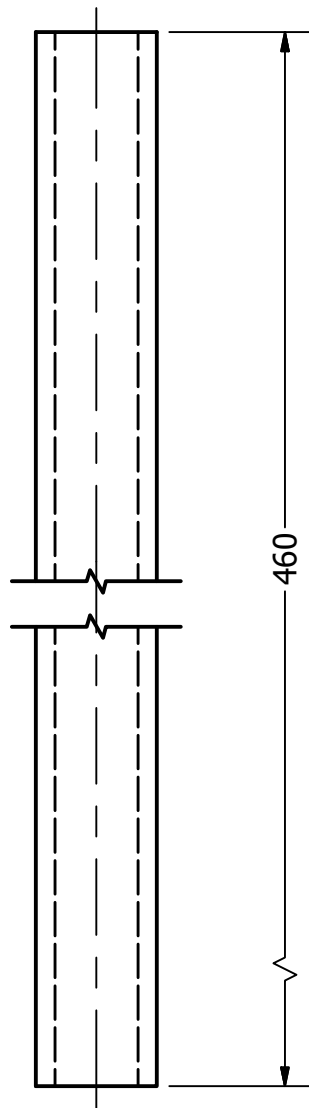
3

2

1


B

B



A

A

Project Crown cap machine		Created by D. Mosquera	Approved by D. Jeager		
Part Name column		Part Code 1.2	Document Type part	Material Steel ASTM A36	
Redesigned by  OPEN SOURCE ECOLOGY GERMANY	Original drawing from Practical ACTION	License CERN-OHL	File Name oseg_ccm_1.2_column.ipt	Version 1.0	Quantity 1
			Scale 1:2	Sheet 8	Date 16.11.20

4

3

2

1

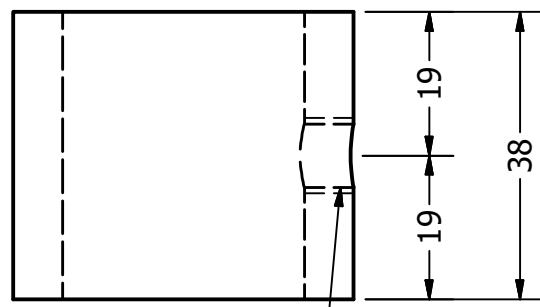
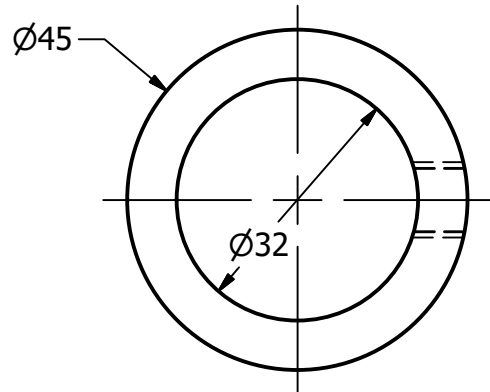


4

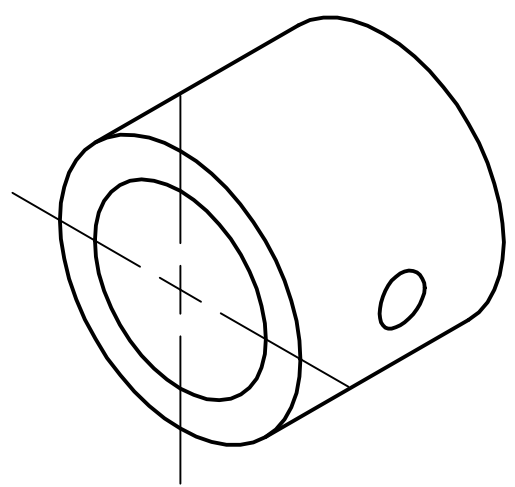
3

2

1



M10x1.5 - 6H



B


B

A

A

A

A

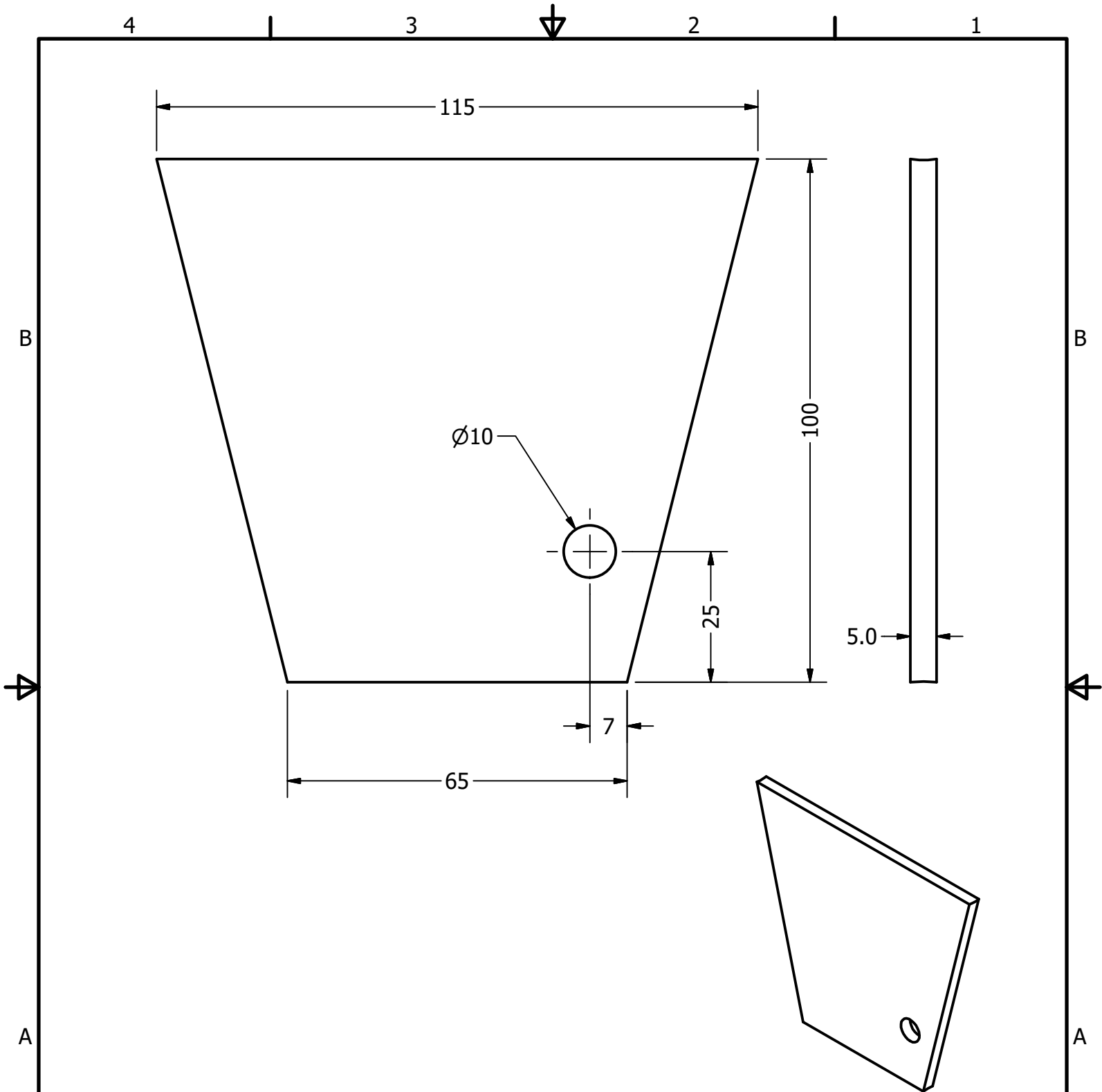
Project Crown cap machine		Created by D. Mosquera	Approved by D. Jeager		
Part Name bush-for-height		Part Code 1.3	Document Type part	Material Steel ASTM A36	
Redesigned by  OPEN SOURCE ECOLOGY GERMANY	Original drawing from Practical ACTION	License CERN-OHL	File Name oseg_ccm_1.3_bush-for-height.ipt	Version 1.0	Quantity 1
			Scale 1:1	Sheet 9	Date 16.11.20


4

3

2

1



Project Crown cap machine		Created by D. Mosquera	Approved by D. Jeager		
Part Name braket		Part Code 1.4	Document Type part	Material Steel ASTM A36	
Redesigned by  OPEN SOURCE ECOLOGY GERMANY	Original drawing from Practical ACTION	License CERN-OHL	File Name oseg_ccm_1.4_braket.ipt	Version 1.0	Quantity 1
			Scale 1:1	Sheet 10	Date 16.11.20

4

3

2

1

A

A

B

B

4

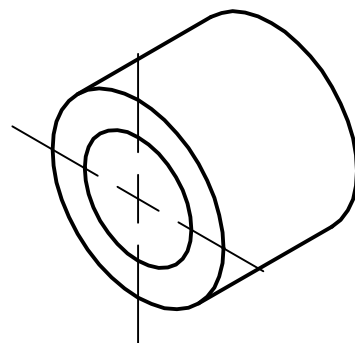
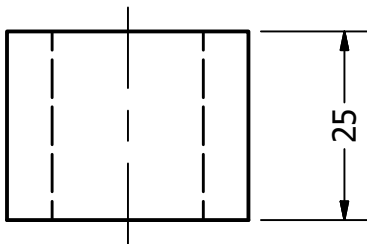
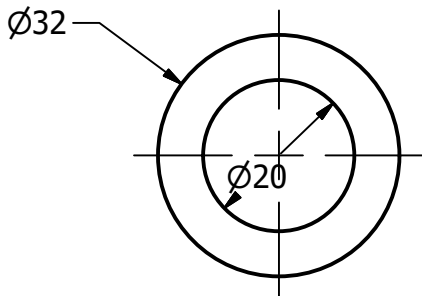
3

2

1


B

B



A

A

Project Crown cap machine		Created by D. Mosquera	Approved by D. Jeager		
Part Name Bush-for-shaft		Part Code 1.5	Document Type part	Material Steel ASTM A36	
Redesigned by  OPEN SOURCE ECOLOGY GERMANY	Original drawing from Practical ACTION	License CERN-OHL	File Name oseg_ccm_1.5_Bush-for-shaft.ipt	Version 1.0	Quantity 2
			Scale 1:1	Sheet 11	Date 16.11.20

4

3

2

1

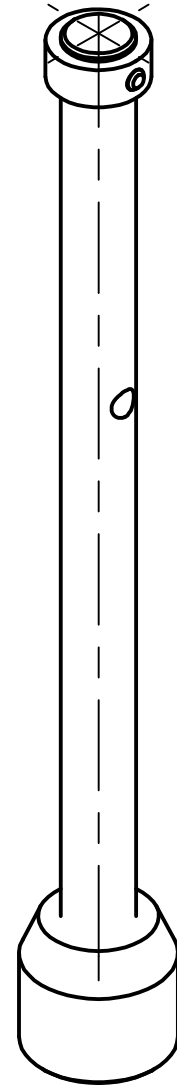
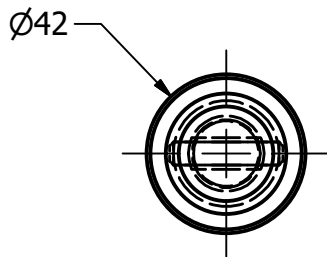
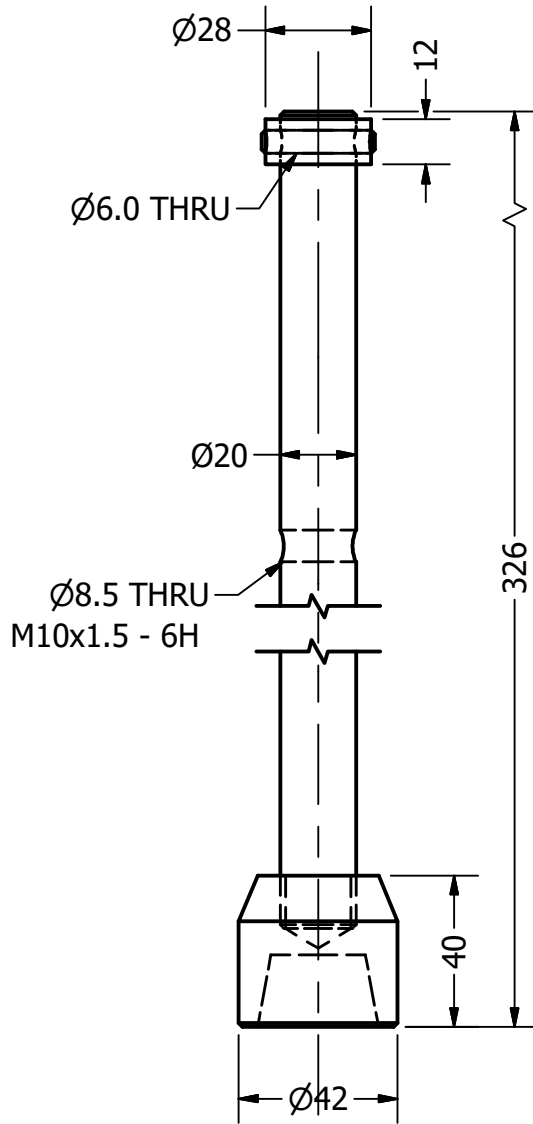


4

3

2

1




B

B

A

A

Project Crown cap machine		Created by D. Mosquera	Approved by D. Jeager		
Part Name Shaft-for-caps		Part Code 2	Document Type ASSEMBLY	Material	
Redesigned by  OPEN SOURCE ECOLOGY GERMANY	Original drawing from Practical ACTION	License CERN-OHL	File Name oseg_ccm_2_shaft-for-caps.iam	Version 1.0	Quantity
			Scale 1:2	Sheet 12	Date 16.11.20

4

3

2

1

4

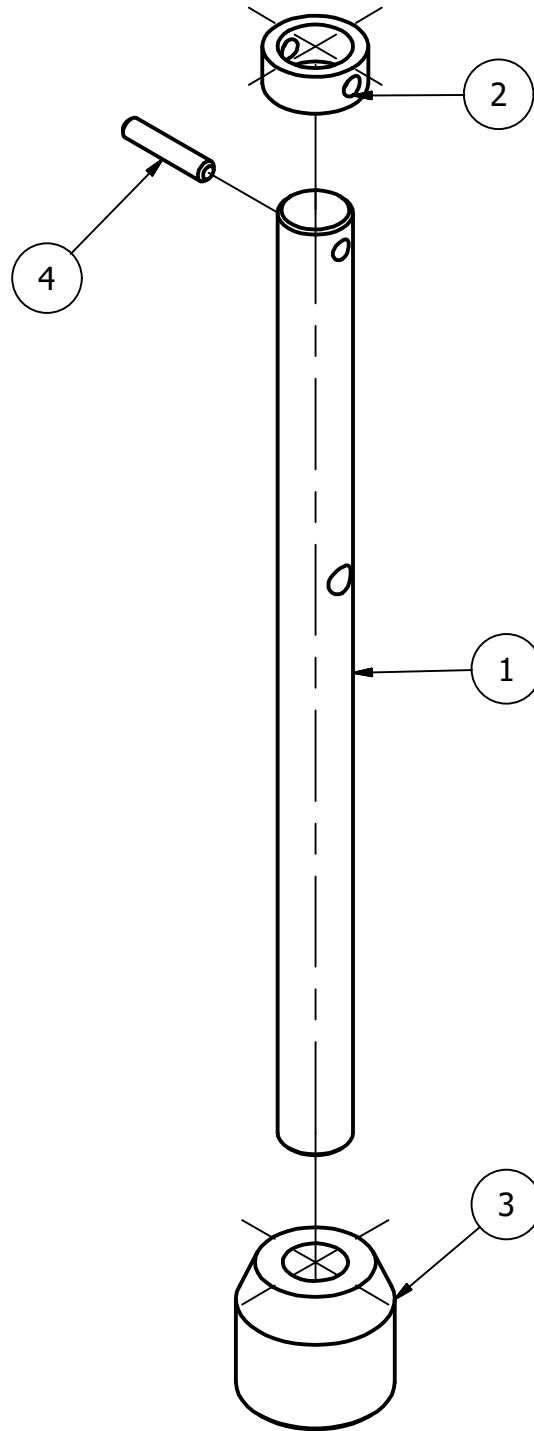
3

2

1


B

B



A

A

Project Crown cap machine		Created by D. Mosquera	Approved by D. Jeager		
Part Name Shaft-for-caps		Part Code 2	Document Type ASSEMBLY	Material	
Redesigned by  OPEN SOURCE ECOLOGY GERMANY	Original drawing from Practical ACTION	License CERN-OHL	File Name oseg_ccm_2_shaft-for-caps.iam	Version 1.0	Quantity
			Scale 1:2	Sheet 13	Date 16.11.20

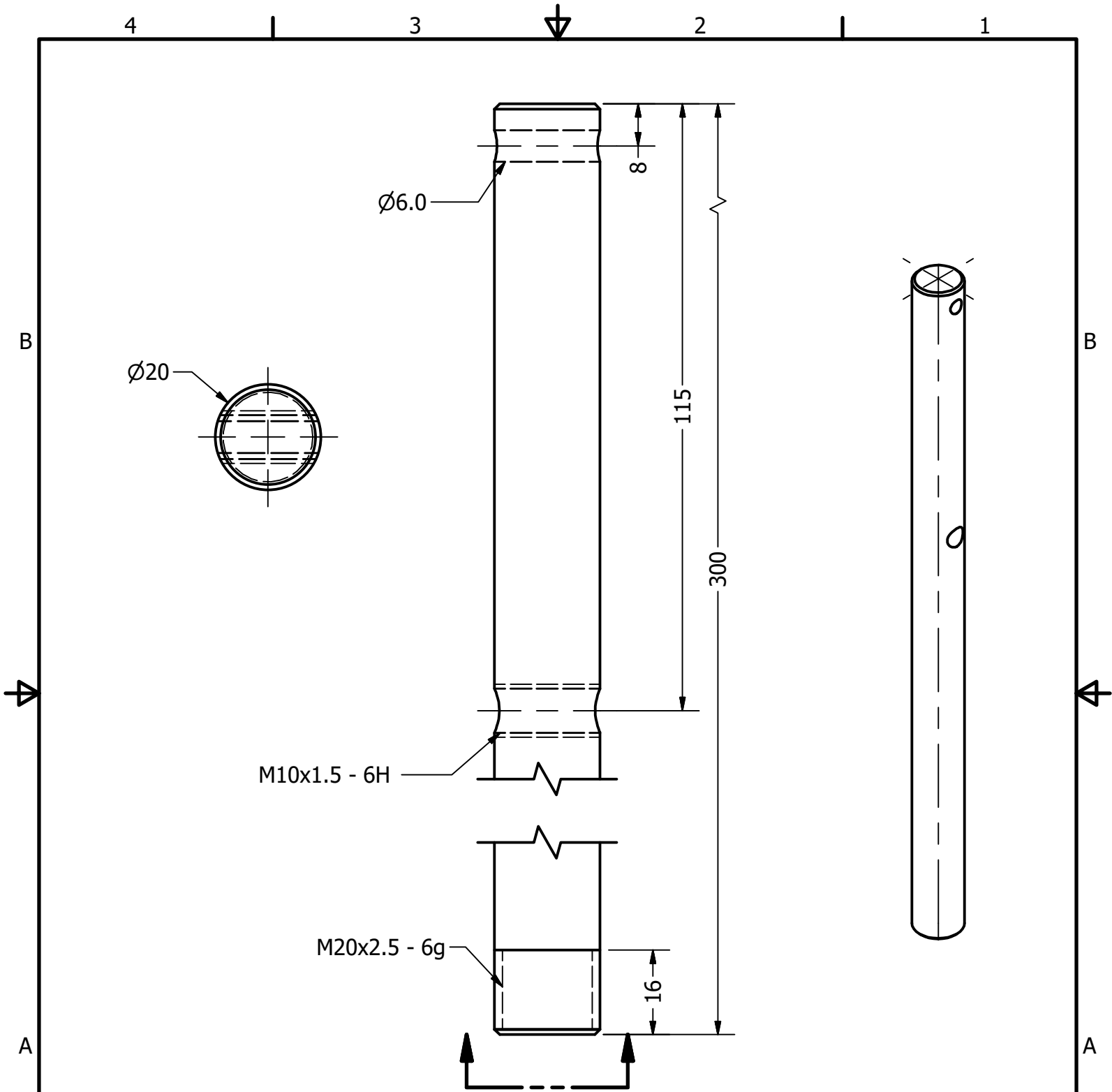
4


3

2

1

4



Project Crown cap machine		Created by D. Mosquera	Approved by D. Jeager		
Part Name Shaft		Part Code 2.1	Document Type part	Material Steel ASTM A36	
Redesigned by  OPEN SOURCE ECOLOGY GERMANY	Original drawing from Practical ACTION	License CERN-OHL	File Name oseg_ccm_2.1_shaft.ipt	Version 1.0	Quantity 1
			Scale 1:1	Sheet 14	Date 16.11.20

4

3

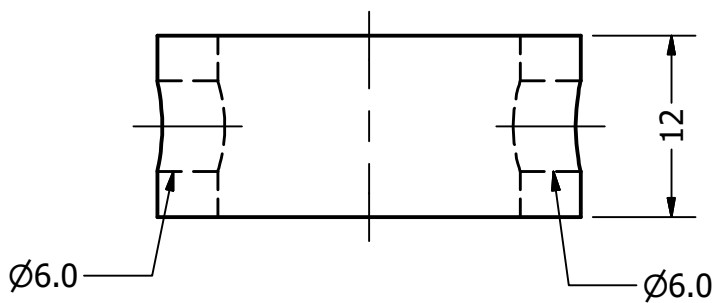
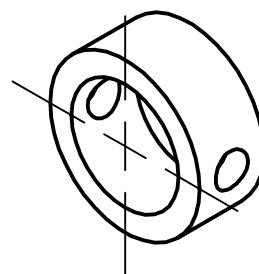
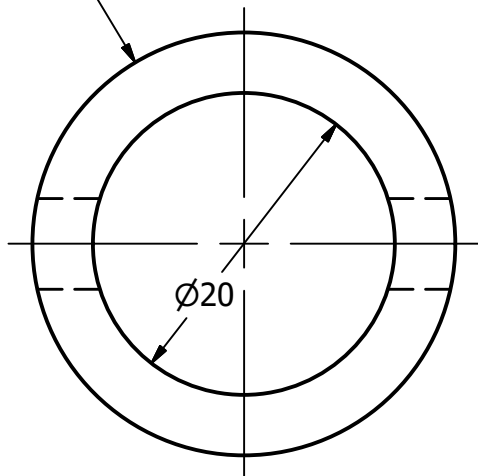
2

1

Ø28


B

B



A

A

Project Crown cap machine		Created by D. Mosquera	Approved by D. Jeager		
Part Name Shaft-stop		Part Code 2.2	Document Type part	Material Steel ASTM A36	
Redesigned by  OPEN SOURCE ECOLOGY GERMANY	Original drawing from Practical ACTION	License CERN-OHL	File Name oseg_ccm_2.2_shaft-stop.ipt	Version 1.0	Quantity 1
			Scale 2:1	Sheet 15	Date 16.11.20

4

3

2

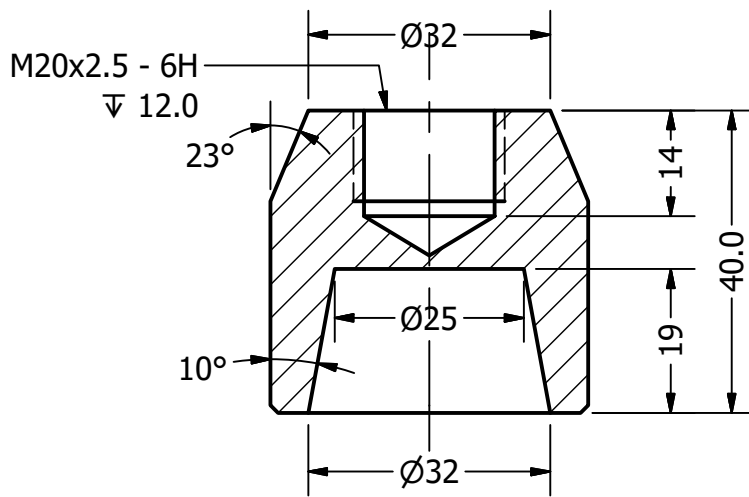
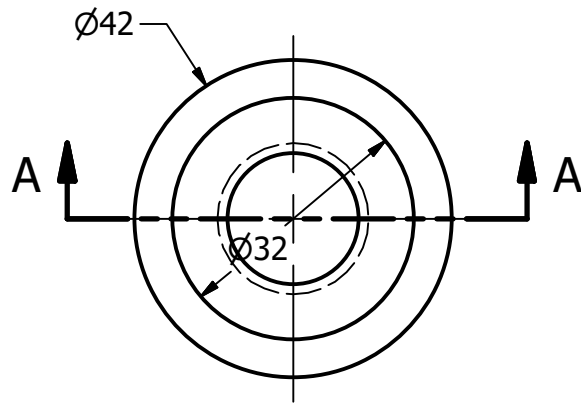
1

4

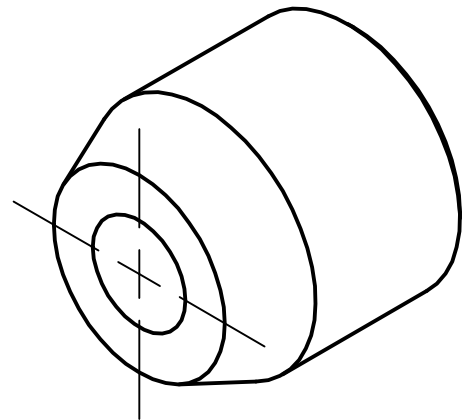
3


2

1



SECTION A-A



Project Crown cap machine		Created by D. Mosquera		Approved by D. Jeager	
Part Name Cap-holder		Part Code 2.3		Document Type part	
Redesigned by 		Original drawing from Practical ACTION		Material Steel ASTM A36	
License CERN-OHL		File Name oseg_ccm_2.3_cap-holder.ipt		Version 1.0	
		Scale 1:1		Quantity 1	
				Sheet 16	
				Date 16.11.20	

4

3

2

1

4

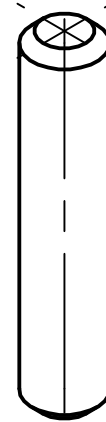
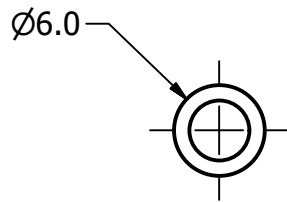
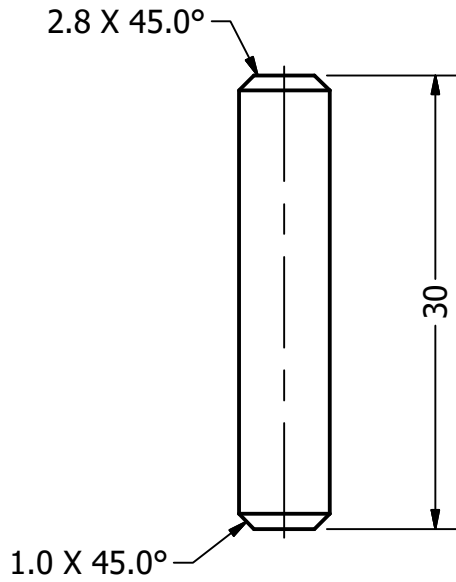
3

2

1


B

B



A

A

Project Crown cap machine		Created by D. Mosquera	Approved by D. Jeager		
Part Name Split-pin		Part Code 2.4	Document Type part	Material Steel ASTM A36	
Redesigned by  OPEN SOURCE ECOLOGY GERMANY	Original drawing from Practical ACTION	License CERN-OHL	File Name oseg_ccm_2.4_split-pin.ipt	Version 1.0	Quantity 1
			Scale 2:1	Sheet 17	Date 16.11.20

4

3

2

1

4

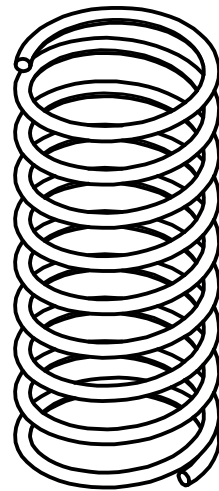
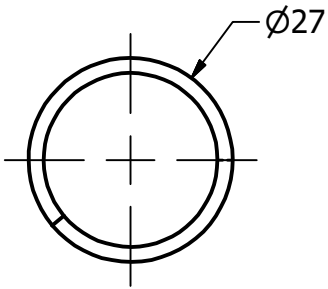
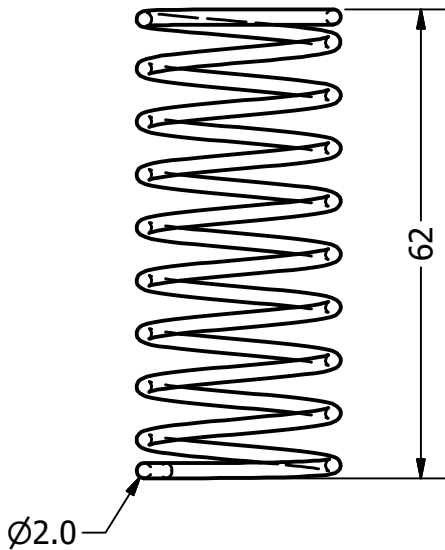
3

2

1


B

B



A

A

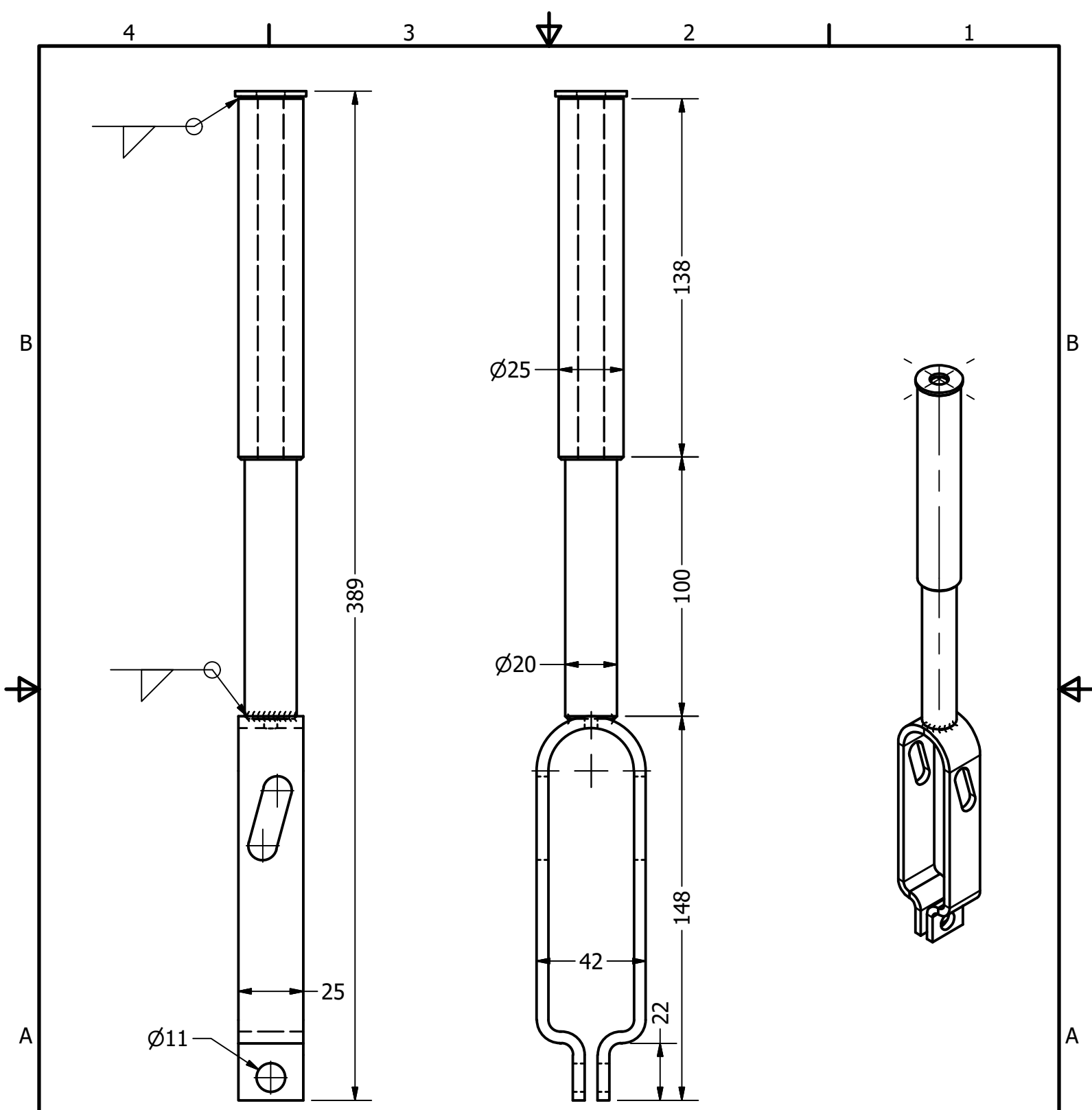
Project Crown cap machine		Created by D. Mosquera	Approved by D. Jeager		
Part Name Spring		Part Code 2.5	Document Type part	Material	
Redesigned by  OPEN SOURCE ECOLOGY GERMANY	Original drawing from Practical ACTION	License CERN-OHL	File Name oseg_ccm_2.5_spring.ipt	Version 1.0	Quantity 1
			Scale 1:1	Sheet 18	Date 16.11.20


4

3

2

1



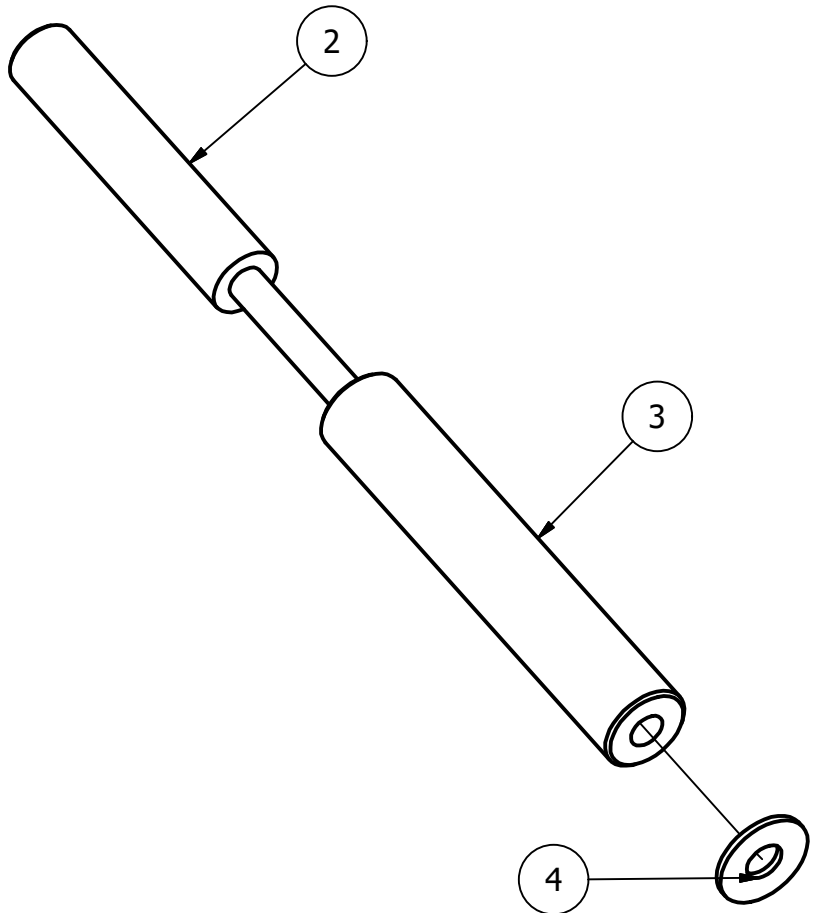
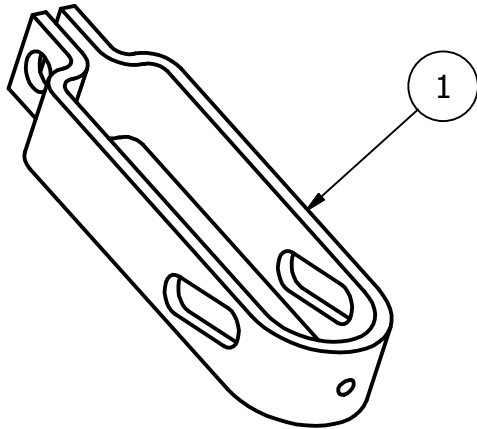
Project Crown cap machine		Created by D. Mosquera		Approved by D. Jeager	
Part Name Fork-lever		Part Code 3.0		Document Type ASSEMBLY	
Redesigned by  OPEN SOURCE ECOLOGY GERMANY		Original drawing from Practical ACTION		License CERN-OHL	
		File Name oseg_ccm_3_fork-lever.iam		Version 1.0	
		Scale 1:2		Quantity 19	
				Date 16.11.20	

4

3

2

1




B

B

A

A

Project Crown cap machine		Created by D. Mosquera	Approved by D. Jeager		
Part Name Fork-lever		Part Code 3.0	Document Type ASSEMBLY	Material	
Redesigned by  OPEN SOURCE ECOLOGY GERMANY	Original drawing from Practical ACTION	License CERN-OHL	File Name oseg_ccm_3_fork-lever.iam	Version 1.0	Quantity
			Scale 1:2	Sheet 20	Date 16.11.20

4

3

2

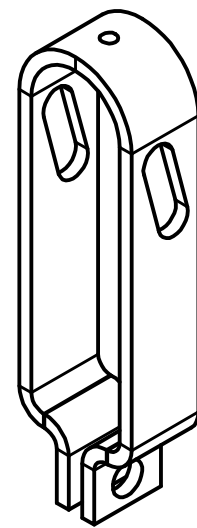
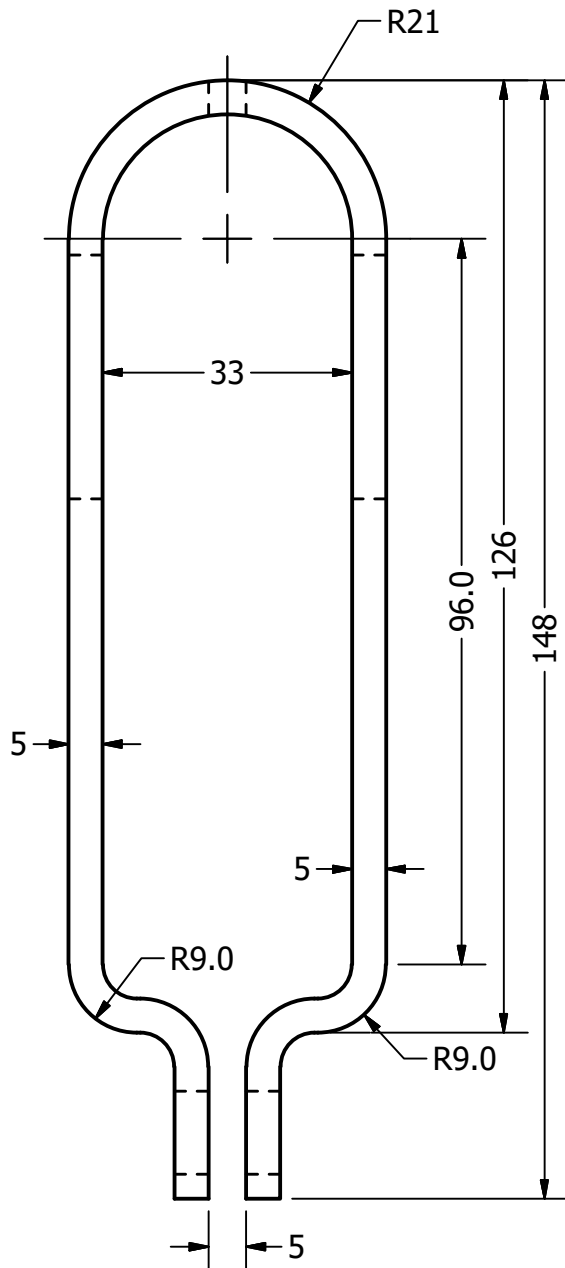
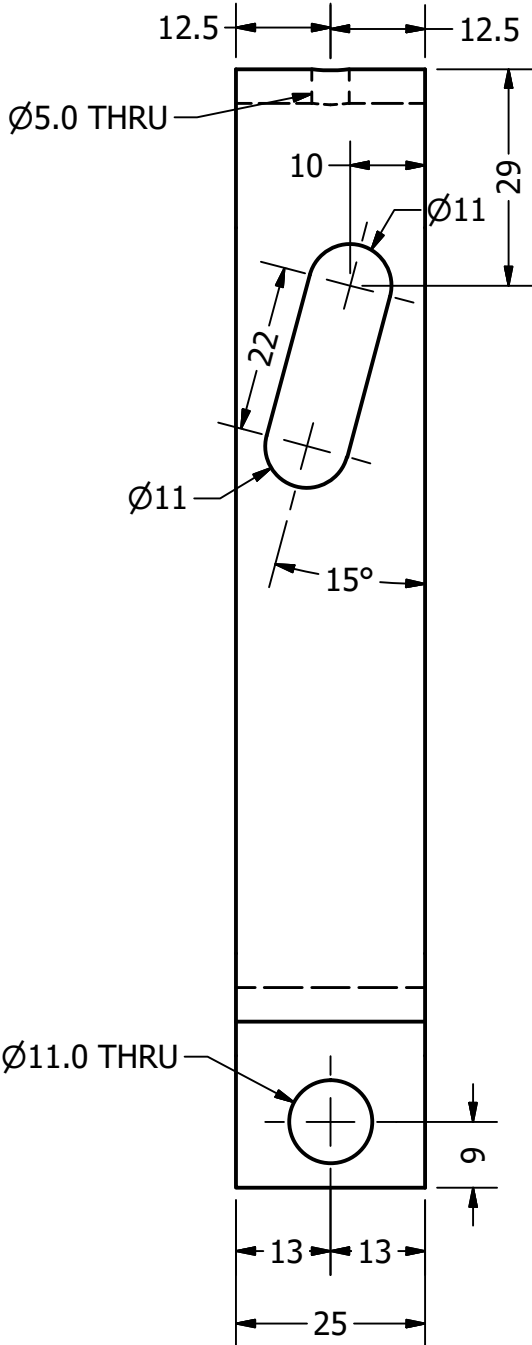
1

4

3

2

1




B

B

A

A

Project Crown cap machine		Created by D. Mosquera		Approved by D. Jeager	
Part Name Fork		Part Code 3.1		Document Type part	
Redesigned by  OPEN SOURCE ECOLOGY GERMANY		Original drawing from Practical ACTION		License CERN-OHL	
		File Name oseg_ccm_3.1_fork.ipt		Version 1.0	
		Scale 1:1		Quantity 1	
				Sheet 21	
				Date 16.11.20	

4

3

2

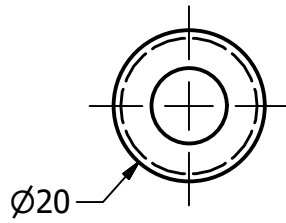
1

4

3

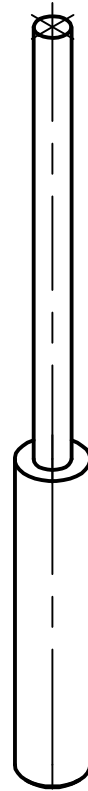
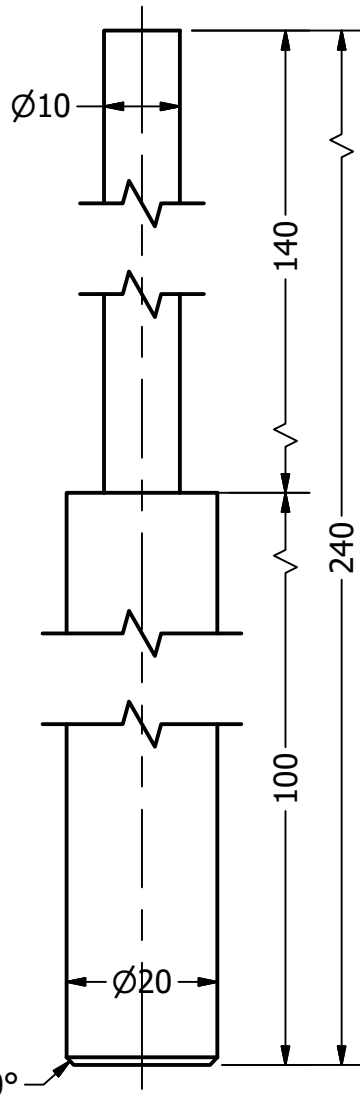
2

1




B

B



A

A

Project Crown cap machine		Created by D. Mosquera	Approved by D. Jeager		
Part Name Lever		Part Code 3.2	Document Type part	Material Steel ASTM A36	
Redesigned by  OPEN SOURCE ECOLOGY GERMANY	Original drawing from Practical ACTION	License CERN-OHL	File Name oseg_ccm_3.2_lever.ipt	Version 1.0	Quantity 1
			Scale 1:1	Sheet 22	Date 16.11.20

4

3

2

1

4

3

2

1

Ø25

Ø10.0 THRU

B

B

A

A

140

Project

Crown cap machine

Created by

D. Mosquera

Approved by

D. Jeager

Part Name

Handler

Part Code

3.3

Document Type

part

Material

Steel ASTM A36

Redesigned by



OPEN SOURCE ECOLOGY GERMANY

Original drawing from

Practical ACTION

License

CERN-OHL

File Name

oseg_ccm_3.3_handler.ipt

Version

1.0

Quantity

1

Scale

1:1

Sheet

23

Date

16.11.20

4

3

2

1