
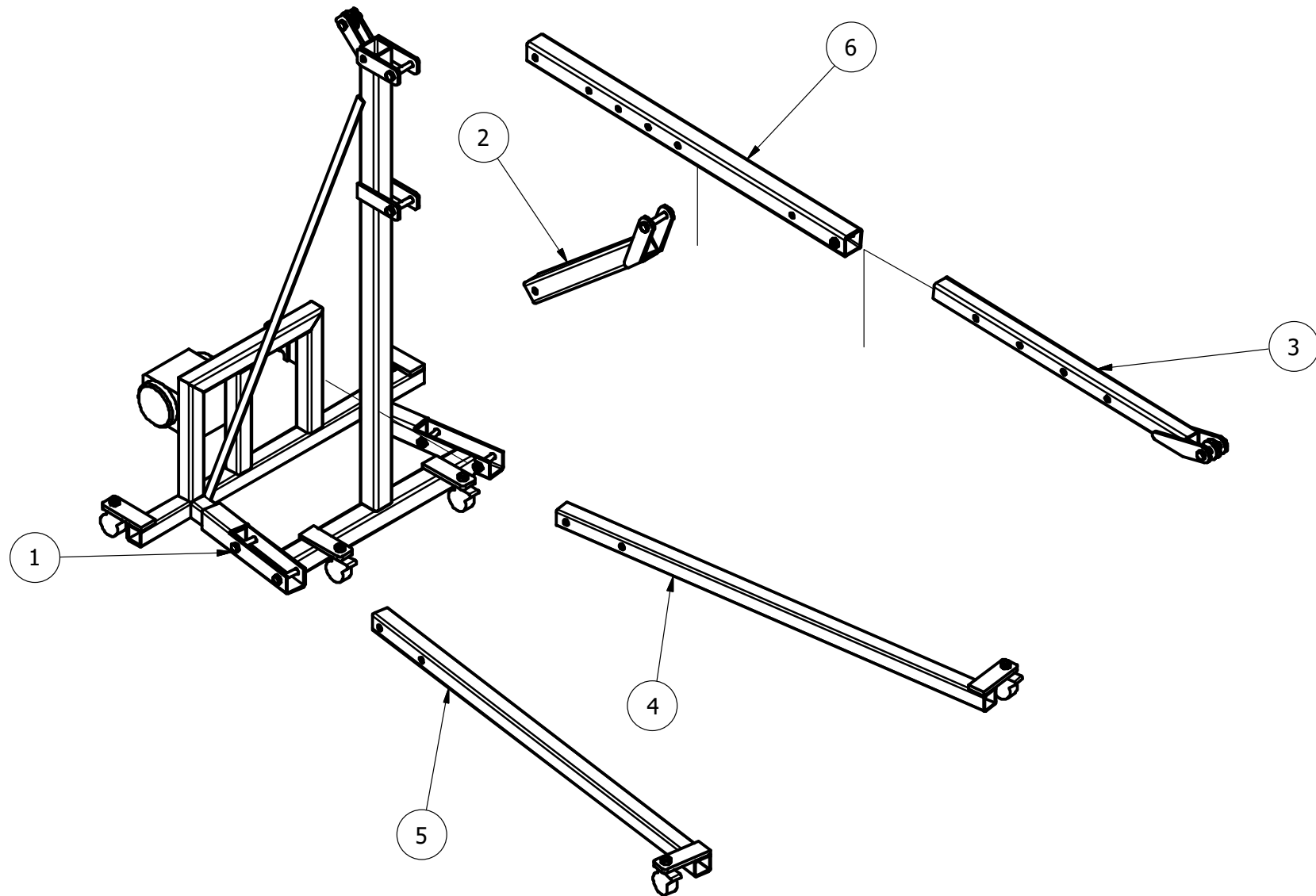




PROJECT	CREATED BY	APROVED BY		
Workshop Crane	A. MORILLO	D. JAEGER		
PART NAME	PART CODE	DOCUMENT TYPE	MATERIAL	
workshop-crane	A1	ASSEMBLY		
 OPEN HARDWARE OBSERVATORY Free Blueprints for Sustainable Development	LICENCE	FILE NAME	VERSION	QUANTITY
	CC-BY-SA 4.0	workshop-crane.iam	1.0	
		SCALE	SHEET	DATE
	1:15	1 / 31	08/12/20	



PROJECT	CREATED BY	APROVED BY		
Workshop Crane	A. MORILLO	D. JAEGER		
PART NAME	PART CODE	DOCUMENT TYPE	MATERIAL	
workshop-crane	A2	ASSEMBLY		
 OPEN HARDWARE OBSERVATORY Free Blueprints for Sustainable Development	LICENCE	FILE NAME	VERSION	QUANTITY
	CC-BY-SA 4.0	workshop-crane.iam	1.0	
			SCALE	SHEET
		1:15	2 / 31	08/12/20

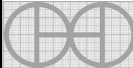
PARTS LIST

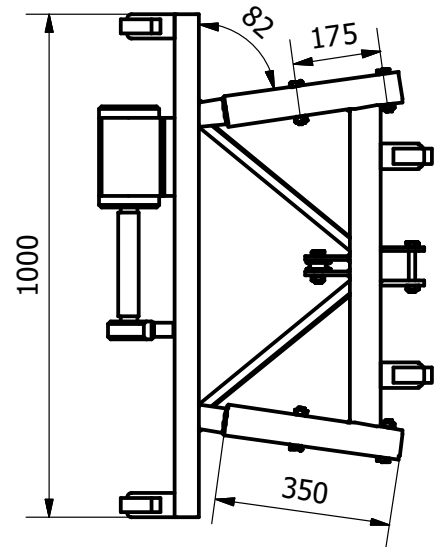
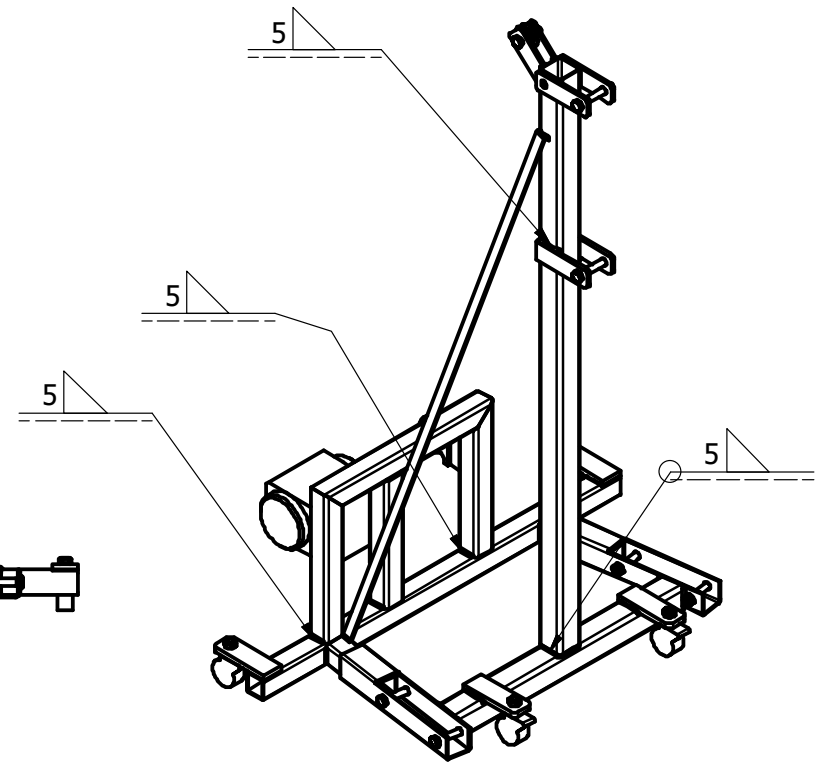
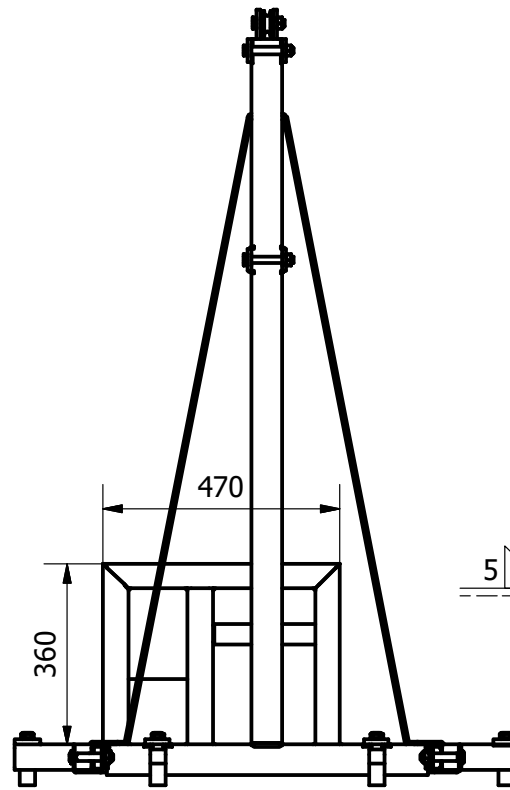
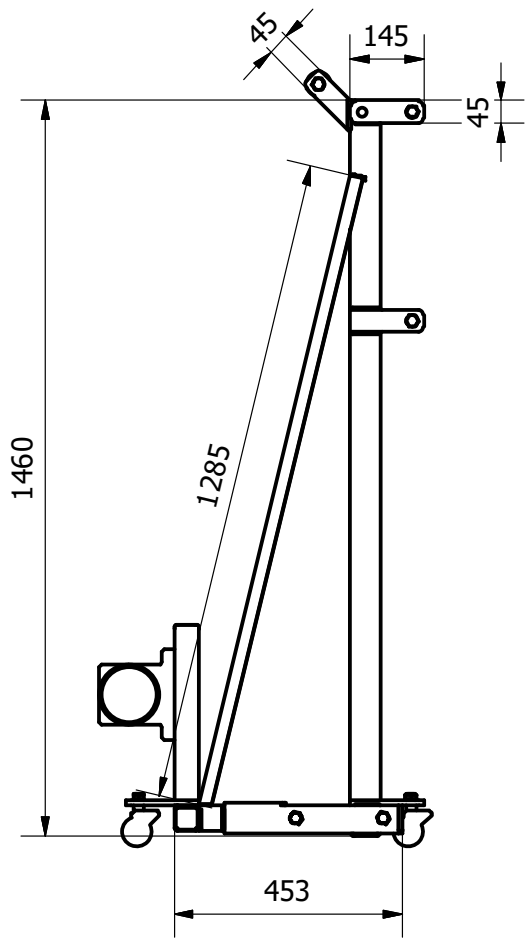
POS.	POS. OLD	QTY	PART NAME	FILE NAME	PART TYPE	SPECIFICATIONS	SHEET
A1		1	WORKSHOP CRANE	workshop-crane.iam			1
A2		1	WORKSHOP CRANE	workshop-crane.ipn			2
B			PART LIST	workshop-crane.csv			3-4
1		1	Main Frame	main-frame.iam			5
1		1	Main Frame	main-frame.ipn			6
1.1		1	Tube 50*50*4*1000 mm	DIN 50 x 50 x 4 00000001.ipt	PRODUCTION	EN 10210-2, STEEL A36	7
1.2		2	Tube 50*50*4*172 mm	Varies	PRODUCTION	EN 10210-2, STEEL A36	8
1.3		2	Tube 60*60*4*350 mm	DIN 60 x 60 x 4 00000004.ipt	PRODUCTION	EN 10210-2, STEEL A36	9
1.4		2	Tube 50*50*4*360 mm	Varies	PRODUCTION	EN 10210-2, STEEL A36	10
1.5		1	Tube 50*50*4*310 mm	DIN 50 x 50 x 4 00000006.ipt	PRODUCTION	EN 10210-2, STEEL A36	11
1.6		1	Tube 50*50*4*470 mm	DIN 50 x 50 x 4 00000008.ipt	PRODUCTION	EN 10210-2, STEEL A36	12
1.7		1	Tube 60*60*4*638 mm	DIN 60 x 60 x 4 00000009.ipt	PRODUCTION	EN 10210-2, STEEL A36	13
1.8		4	flat steel bar 45*8*145 mm	Varies	PRODUCTION	EN 10058, STEEL A36	14
1.9		1	Tube 60*60*4*1400 mm	DIN 60 x 60 x 4 00000014.ipt	PRODUCTION	EN 10210-2, STEEL A36	15
1.10		4	flat steel bar 50*12*145 mm	Varies	PRODUCTION	EN 10058, STEEL A36	16
1.11		2	flat steel bar 25*5*1308 mm	Varies	PRODUCTION	EN 10058, STEEL A36	
1.12		2	flat steel bar 45*8*135 mm	Varies	PRODUCTION	EN 10058, STEEL A36	17
1.13		2	Hex-Head Bolt		STANDARD	DIN 931-1 - M14 x 90	
1.14		11	Hex Nut		STANDARD	DIN 555-5 - M14	
1.15		1	Hex-Head Bolt		STANDARD	DIN 931-1 - M14 x 55	
1.16		4	Hex-Head Bolt		STANDARD	DIN 931-1 - M14 x 75	
1.17		4	WHEEL		BUY	CAP 200 KG	
1.18		1	PULLEY		BUY	D 50 mm, CABLE 10 mm	
1.19		1	Reducer		BUY	i = 1:100, SECURITY BRAKE	
1.20		1	Bearing		BUY	DEPENDS OF ITEM 1.19	
1.21		1	Hollow Shaft		BUY	DEPENDS OF ITEM 1.19	


PROJECT		CREATED BY		APPROVED BY	
Workshop Crane		A. MORILLO		D. JAEGER	
PART NAME		PART CODE	DOCUMENT TYPE		MATERIAL
		B1	PART LIST		
 OPEN HARDWARE OBSERVATORY Free Blueprints for Sustainable Development		LICENCE	FILE NAME		VERSION
		CC-BY-SA 4.0			1.0
			SCALE	SHEET	DATE
				3 /31	08/12/20

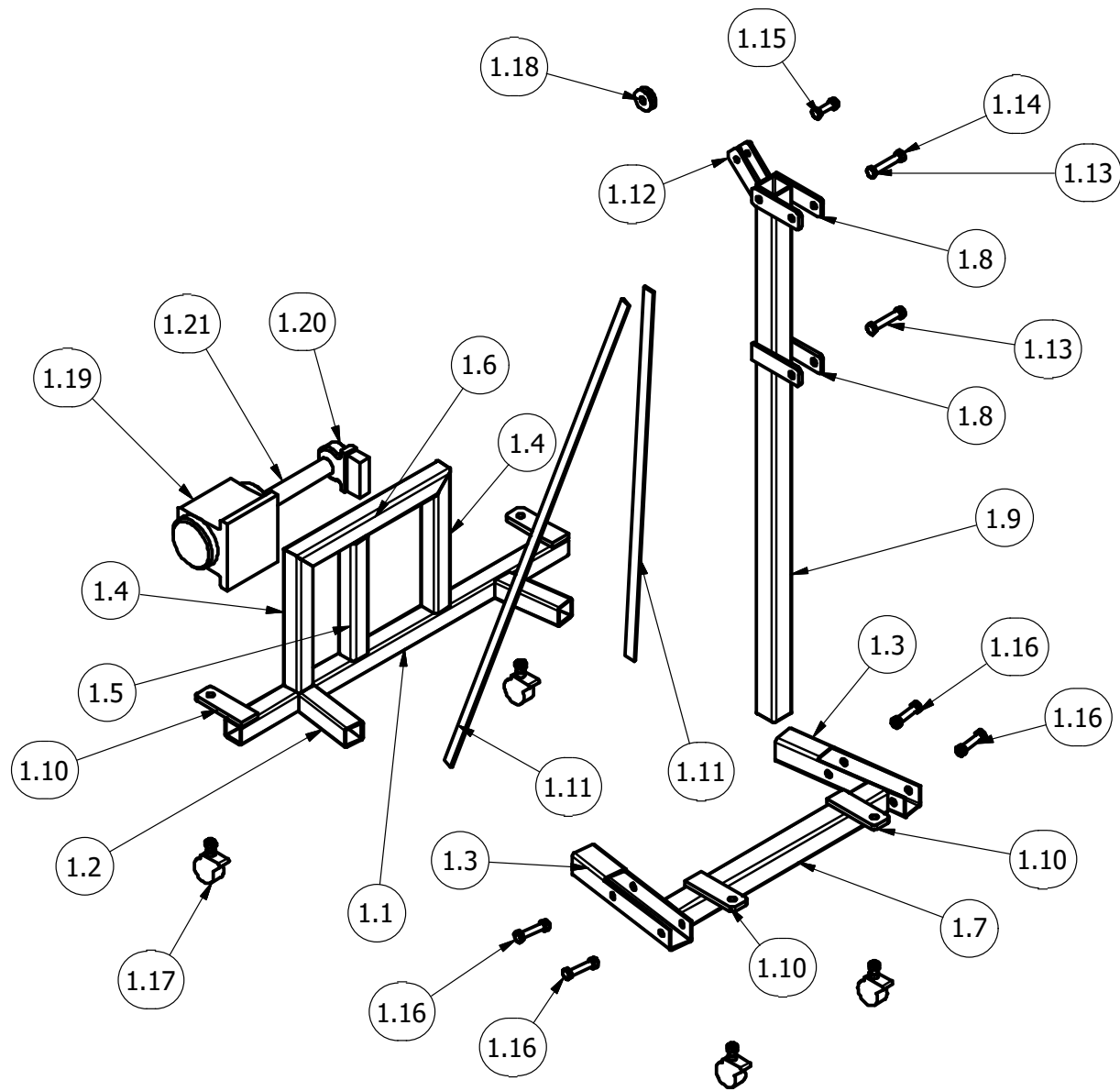
PARTS LIST (CONTINUE)


POS.	POS. OLD	QTY	PART NAME	FILE NAME	PART TYPE	SPECIFICATIONS	SHEET
2		1	Pivot Arm	pivot-arm.iam			18
2.1		1	Tube 60*60*4*500 mm	DIN 60 x 60 x 4 00000001.ipt	PRODUCTION	EN 10210-2, STEEL A36	19
2.2		2	flat steel bar 45*8*222 mm	Varies	PRODUCTION	EN 10058, STEEL A36	20
2.3		1	Hex-Head Bolt		STANDARD	DIN 931-1 - M14 x 90	
2.4		1	Hex Nut		STANDARD	DIN 555-5 - M14	
3		1	Telescopic Tube	telescopic-tube.iam			21
3.1		2	flat steel bar 45*8*267 mm	Varies	PRODUCTION	EN 10058, STEEL A36	22
3.2		1	Tube 50*50*4*890 mm	DIN 50x50x4 00000003.ipt	PRODUCTION	EN 10210-2, STEEL A36	23
3.3		1	Hex-Head Bolt		STANDARD	DIN 931-1 - M14 x 80	
3.4		1	Hex Nut		STANDARD	DIN 555-5 - M14	
3.5		1	PULLEY		BUY	D 50 mm, CABLE 10 mm	
4		1	Lef Leg	left-leg.iam			24
4.1		1	Tube 50*50*4*1340 mm	DIN 50 x 50 x 4 00000002.ipt	PRODUCTION	EN 10210-2, STEEL A36	25
4.2		1	flat steel bar 50*12*145 mm	DIN 50 x 12 00000003.ipt	PRODUCTION	EN 10058, STEEL A36	26
4.3		1	WHEEL		BUY	CAP 200 KG	
4.4		1	Hex Nut		STANDARD	DIN 555-5 - M14	
5		1	Right Leg	right-leg.iam			27
5.1		1	Tube 50*50*4*1340 mm	DIN 50 x 50 x 4 00000001.ipt	PRODUCTION	EN 10210-2, STEEL A36	28
5.2		1	flat steel bar 50*12*145 mm	DIN 50 x 12 00000003.ipt	PRODUCTION	EN 10058, STEEL A36	29
5.3		1	WHEEL		BUY	CAP 200 KG	
5.4		1	Hex Nut		STANDARD	DIN 555-5 - M14	
6		1	Arm	arm.iam			30
6.1		1	Tube 60*60*4*1125 mm	DIN EN 10219-2 - 60 x 60 x 4 - 1125.ipt	PRODUCTION	EN 10210-2, STEEL A36	31
6.2		1	Hex-Head Bolt		STANDARD	DIN 931-1 - M14 x 75	
6.3		1	Hex Nut		STANDARD	DIN 555-5 - M14	

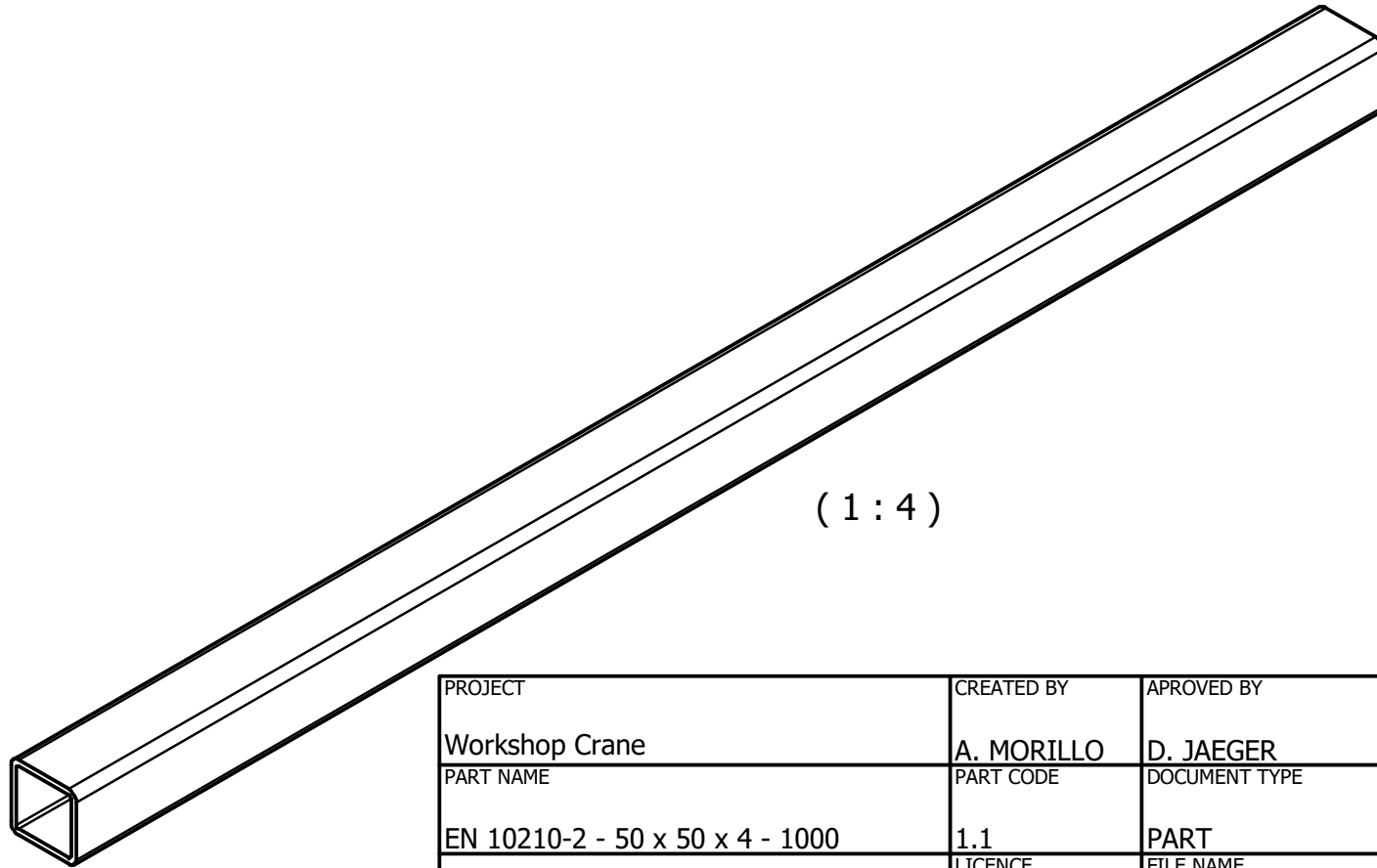
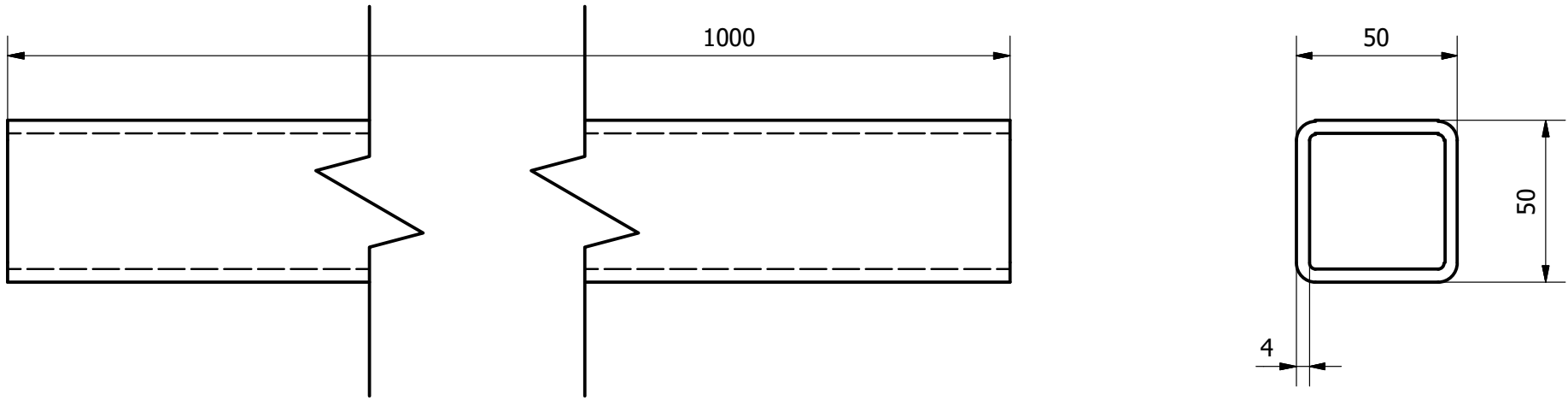
PROJECT		CREATED BY		APPROVED BY	
Workshop Crane		A. MORILLO		D. JAEGER	
PART NAME		PART CODE	DOCUMENT TYPE		MATERIAL
		B2	PART LIST		
 OPEN HARDWARE OBSERVATORY Free Blueprints for Sustainable Development		LICENCE	FILE NAME		VERSION
		CC-BY-SA 4.0			1.0
			SCALE	SHEET	DATE
				4 /31	08/12/20




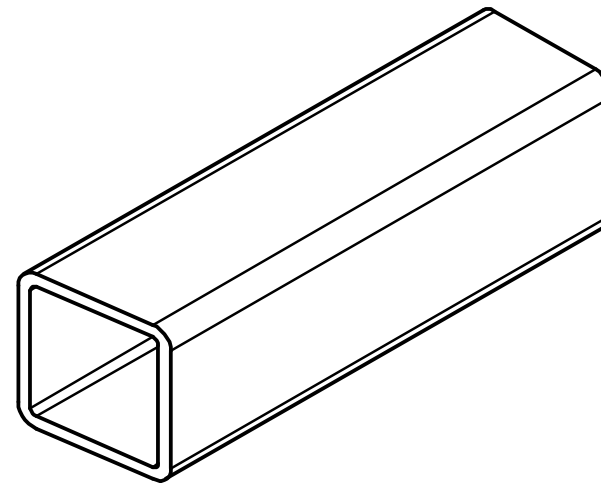
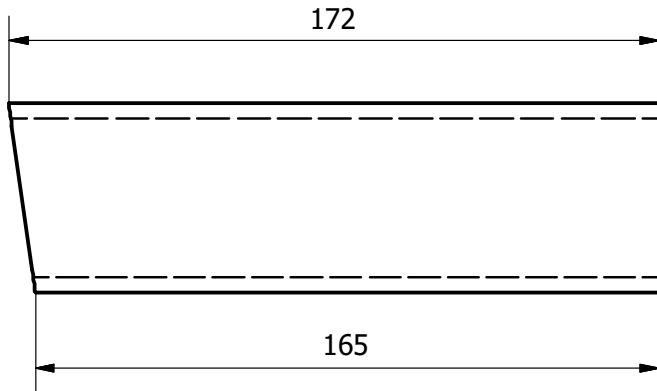
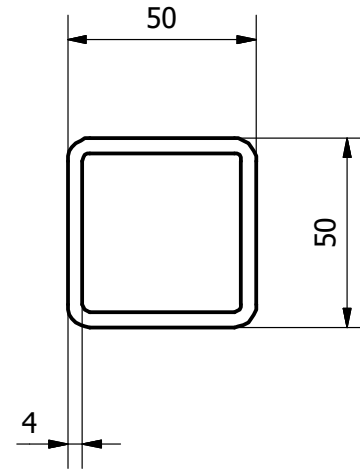
PROJECT	CREATED BY	APROVED BY		
Workshop Crane	A. MORILLO	D. JAEGER		
PART NAME	PART CODE	DOCUMENT TYPE	MATERIAL	
main-frame	1	ASSEMBLY		
 OPEN HARDWARE OBSERVATORY Free Blueprints for Sustainable Development	LICENCE	FILE NAME	VERSION	QUANTITY
	CC-BY-SA 4.0	main-frame.iam	1.0	1
		SCALE	SHEET	DATE
		1:15	5 / 31	08/12/20




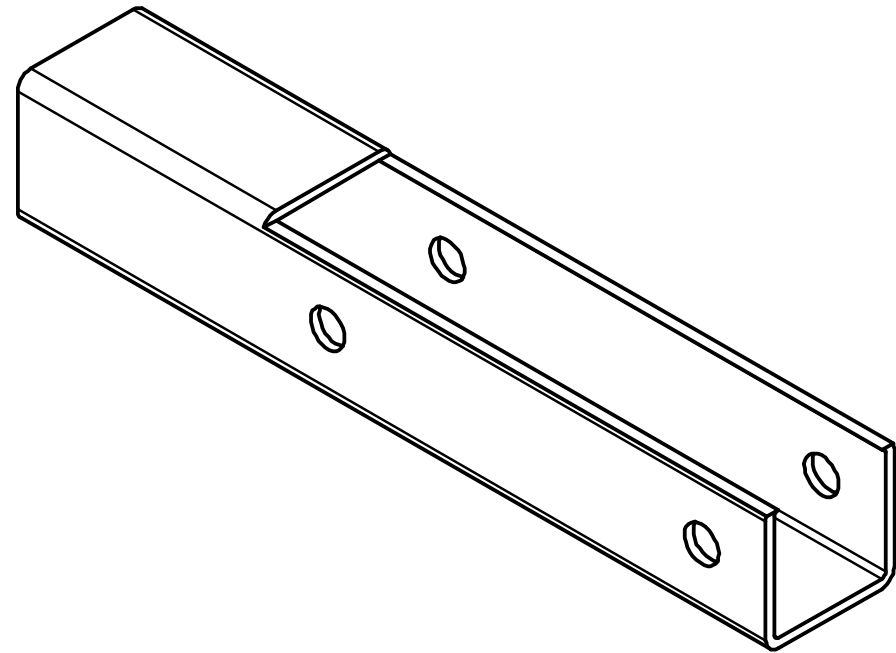
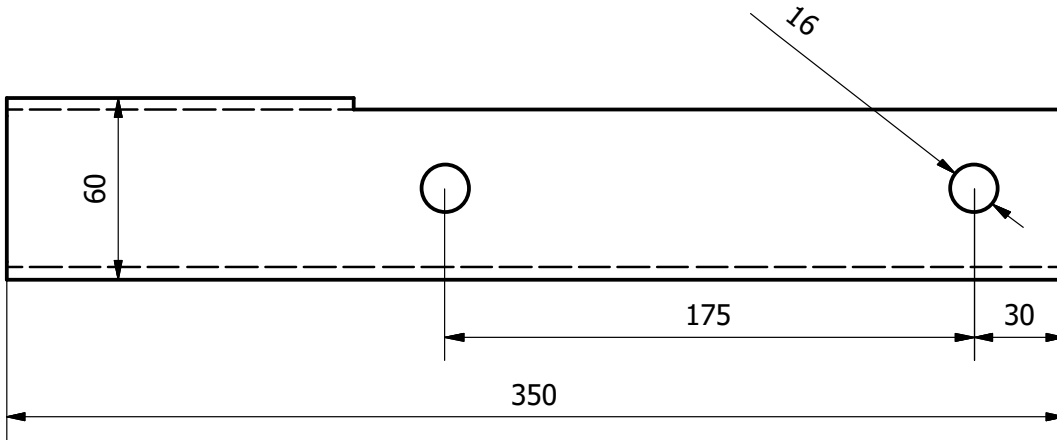
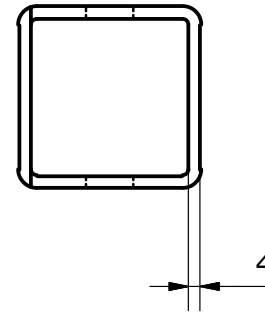
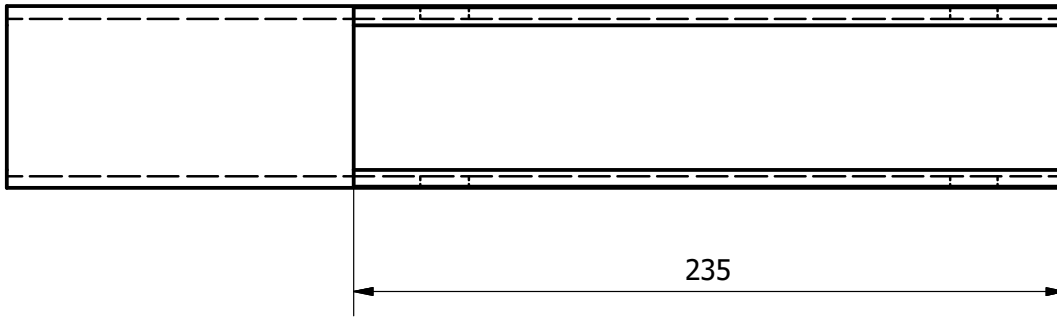
PROJECT		CREATED BY		APROVED BY	
Workshop Crane		A. MORILLO		D. JAEGER	
PART NAME		PART CODE		DOCUMENT TYPE	
main-frame		1		ASSEMBLY	
 OPEN HARDWARE OBSERVATORY Free Blueprints for Sustainable Development		LICENCE		VERSION	
		CC-BY-SA 4.0		1.0	
		FILE NAME		QUANTITY	
		main-frame.iam		1	
		SCALE		SHEET	
		1:15		6 /31	
				DATE	
				08/12/20	




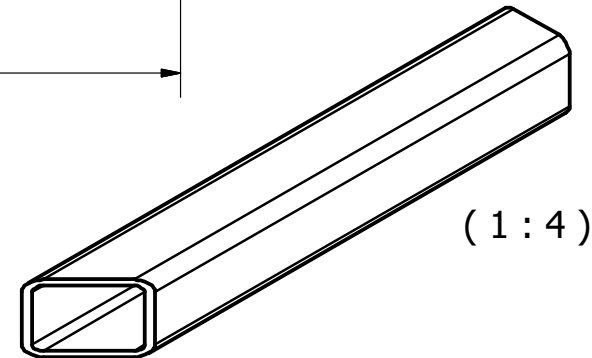
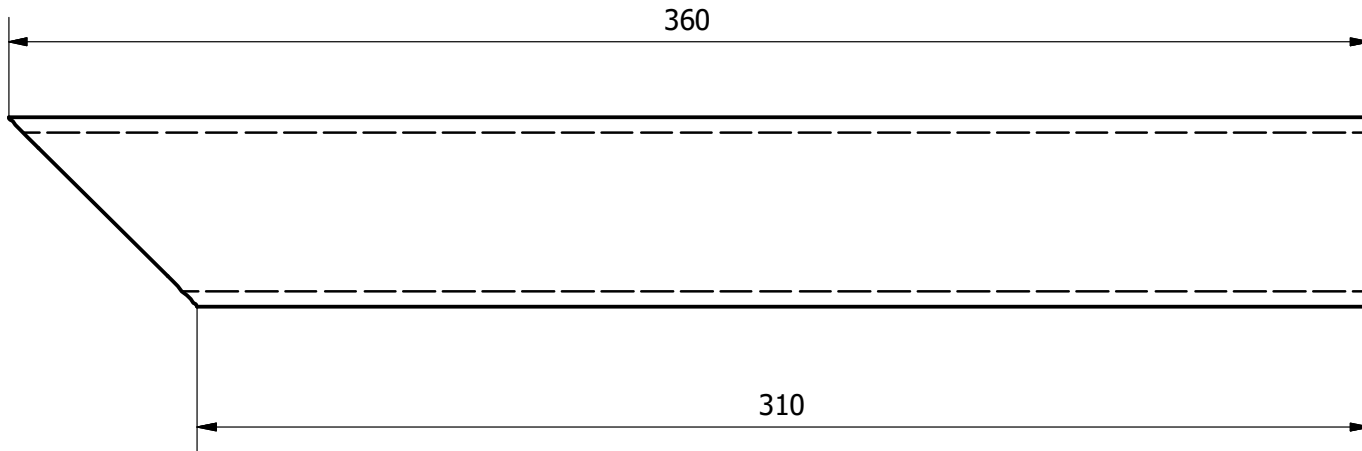
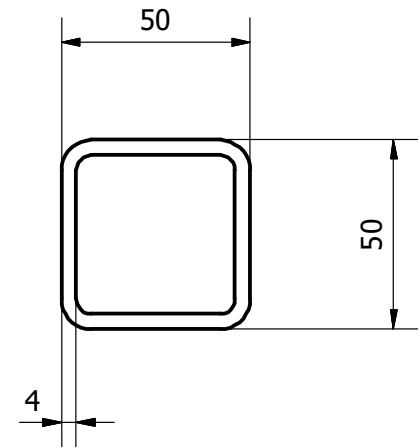
PROJECT	CREATED BY	APROVED BY		
Workshop Crane	A. MORILLO	D. JAEGER		
PART NAME	PART CODE	DOCUMENT TYPE	MATERIAL	
EN 10210-2 - 50 x 50 x 4 - 1000	1.1	PART	STEEL A36	
 OPEN HARDWARE OBSERVATORY Free Blueprints for Sustainable Development	LICENCE	FILE NAME	VERSION	QUANTITY
	CC-BY-SA 4.0	DIN 50 x 50 x 4 00000001.ipt	1.0	1
		SCALE	SHEET	DATE
		1:2	7 /31	08/12/20




PROJECT		CREATED BY		APROVED BY	
Workshop Crane		A. MORILLO		D. JAEGER	
PART NAME		PART CODE		DOCUMENT TYPE	
EN 10210-2 - 50 x 50 x 4 - 172.027		1.2		PART	
 OPEN HARDWARE OBSERVATORY Free Blueprints for Sustainable Development		LICENCE		FILE NAME	
		CC-BY-SA 4.0		DIN 50 x 50 x 4 00000002.ipt	
				MATERIAL	
				STEEL A36	
				VERSION	
				1.0	
				QUANTITY	
				2	
				SCALE	
				1:2	
				SHEET	
				8 /31	
				DATE	
				08/12/20	

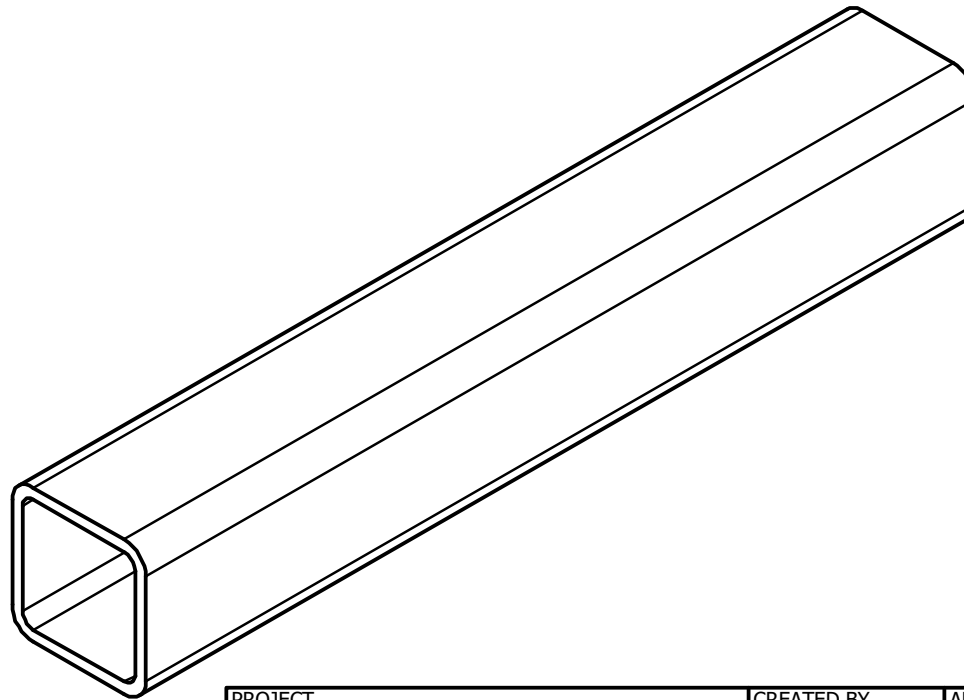
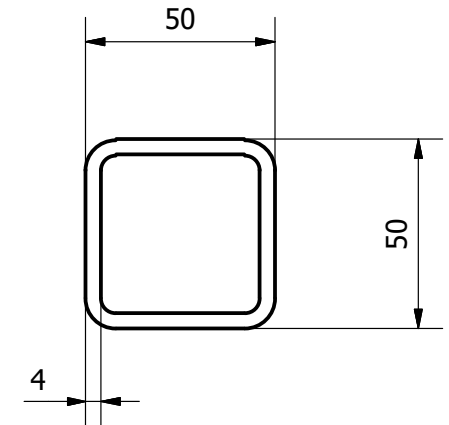
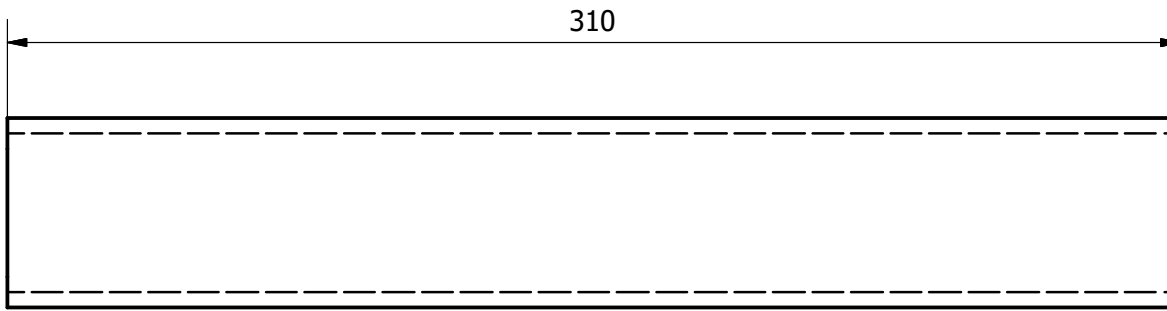



PROJECT	CREATED BY	APROVED BY		
Workshop Crane	A. MORILLO	D. JAEGER		
PART NAME	PART CODE	DOCUMENT TYPE	MATERIAL	
EN 10210-2 - 60 x 60 x 4 - 350	1.3	PART	STEEL A36	
 OPEN HARDWARE OBSERVATORY Free Blueprints for Sustainable Development	LICENCE	FILE NAME	VERSION	QUANTITY
	CC-BY-SA 4.0	DIN 60 x 60 x 4 00000004.ipt	1.0	2
		SCALE	SHEET	DATE
		1:2	9 /31	08/12/20

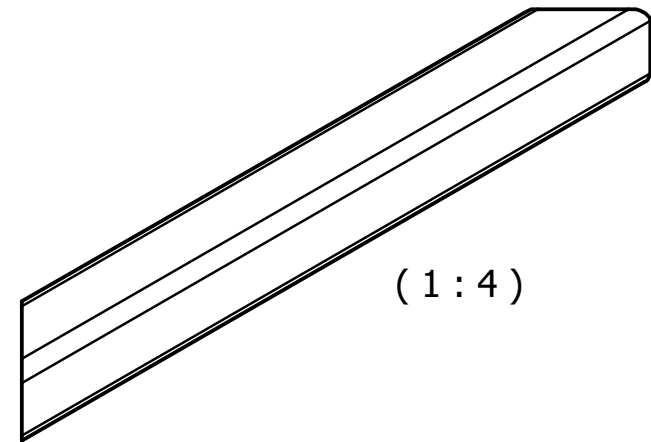
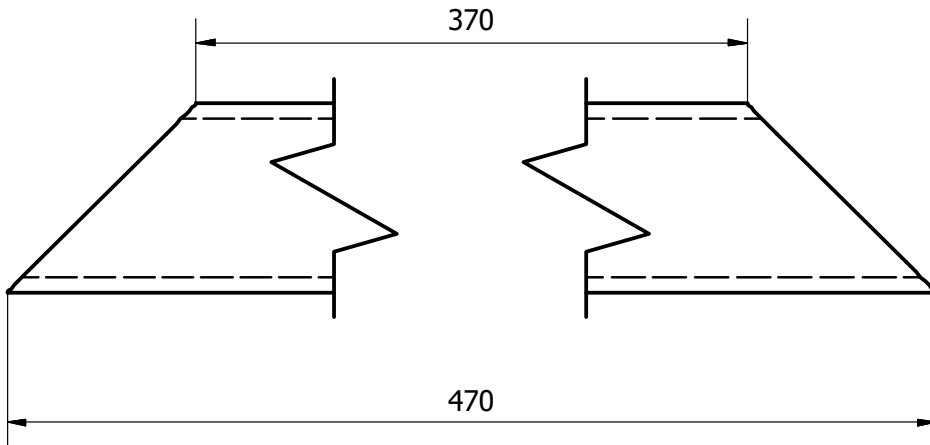
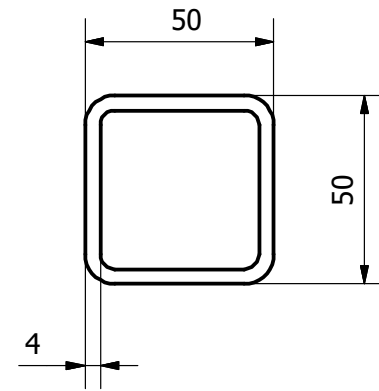
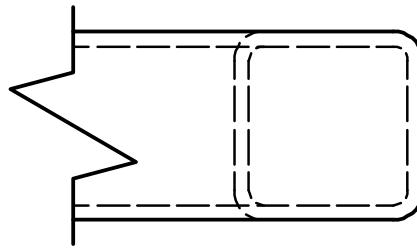
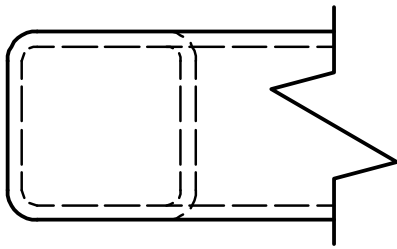



(1 : 4)

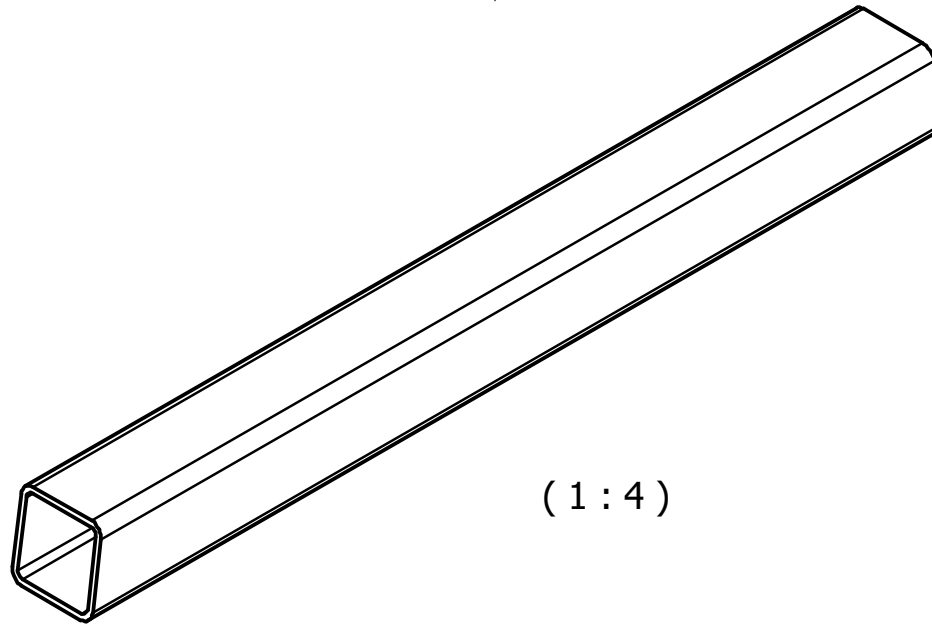
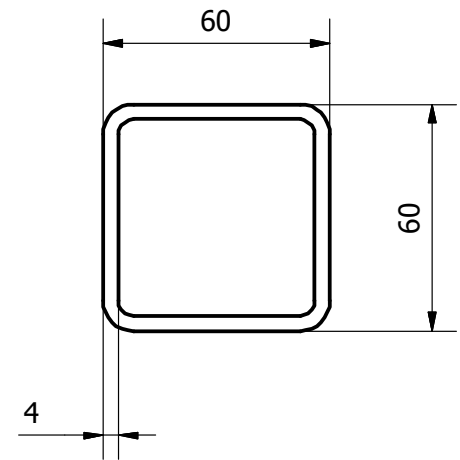
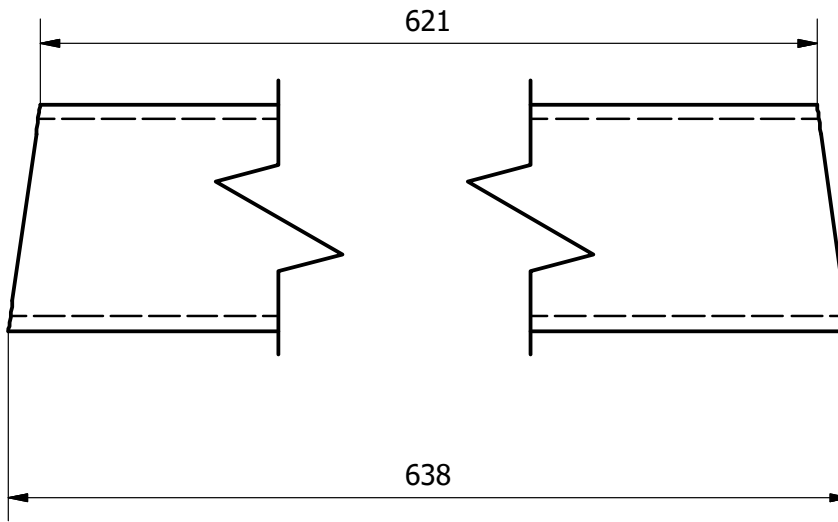
PROJECT	CREATED BY	APROVED BY		
Workshop Crane	A. MORILLO	D. JAEGER		
PART NAME	PART CODE	DOCUMENT TYPE	MATERIAL	
EN 10210-2 - 50 x 50 x 4 - 360	1.4	PART	STEEL A36	
 OPEN HARDWARE OBSERVATORY Free Blueprints for Sustainable Development	LICENCE	FILE NAME	VERSION	QUANTITY
	CC-BY-SA 4.0	DIN 50 x 50 x 4 00000005.ipt	1.0	2
		SCALE	SHEET	DATE
		1:2	10 /31	08/12/20




PROJECT	CREATED BY	APROVED BY		
Workshop Crane	A. MORILLO	D. JAEGER		
PART NAME	PART CODE	DOCUMENT TYPE	MATERIAL	
EN 10210-2 - 50 x 50 x 4 - 310	1.5	PART	STEEL A36	
 OPEN HARDWARE OBSERVATORY Free Blueprints for Sustainable Development	LICENCE	FILE NAME	VERSION	QUANTITY
	CC-BY-SA 4.0	DIN 50 x 50 x 4 00000006.ipt	1.0	1
		SCALE	SHEET	DATE
		1:2	11 /31	08/12/20

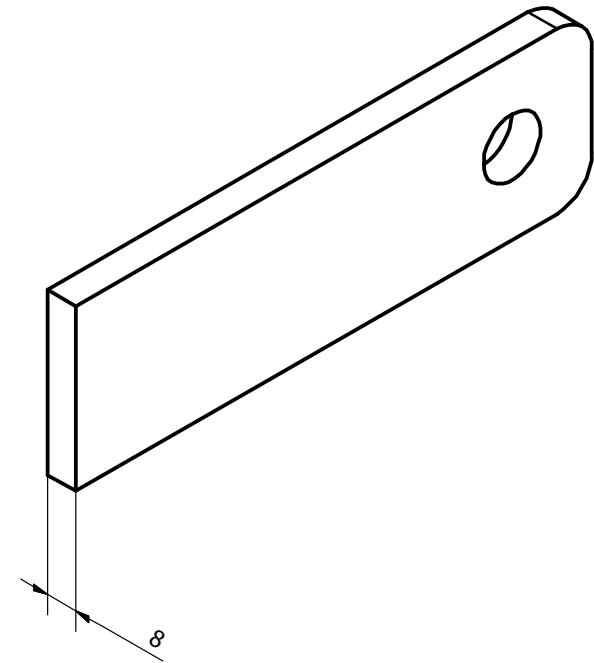
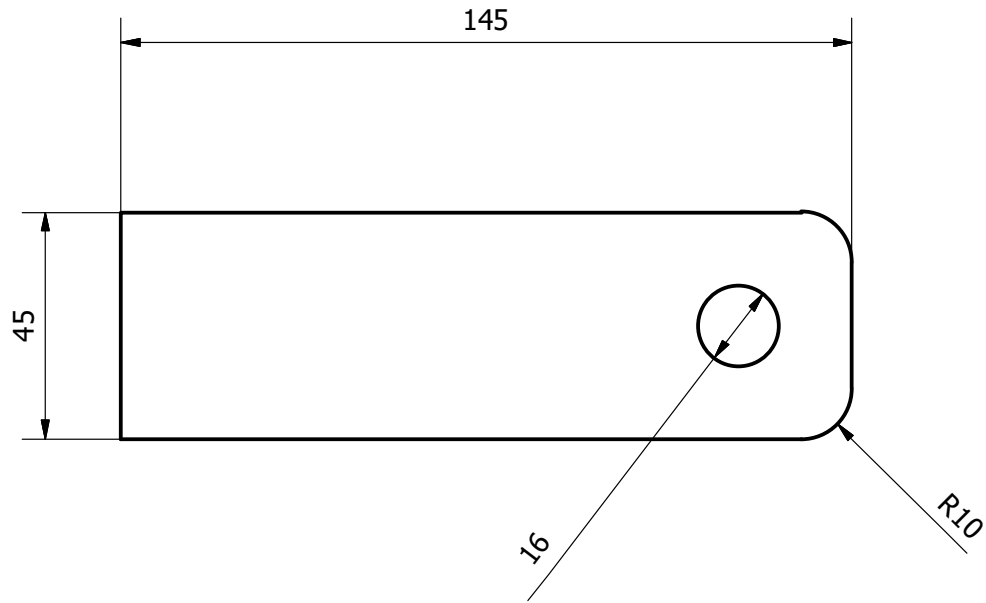



PROJECT	CREATED BY	APROVED BY		
Workshop Crane	A. MORILLO	D. JAEGER		
PART NAME	PART CODE	DOCUMENT TYPE	MATERIAL	
EN 10210-2 - 50 x 50 x 4 - 470	1.6	PART	STEEL A36	
 OPEN HARDWARE OBSERVATORY Free Blueprints for Sustainable Development	LICENCE	FILE NAME	VERSION	QUANTITY
	CC-BY-SA 4.0	DIN 50 x 50 x 4 00000008.ipt	1.0	1
		SCALE	SHEET	DATE
		1:2	12 /31	08/12/20

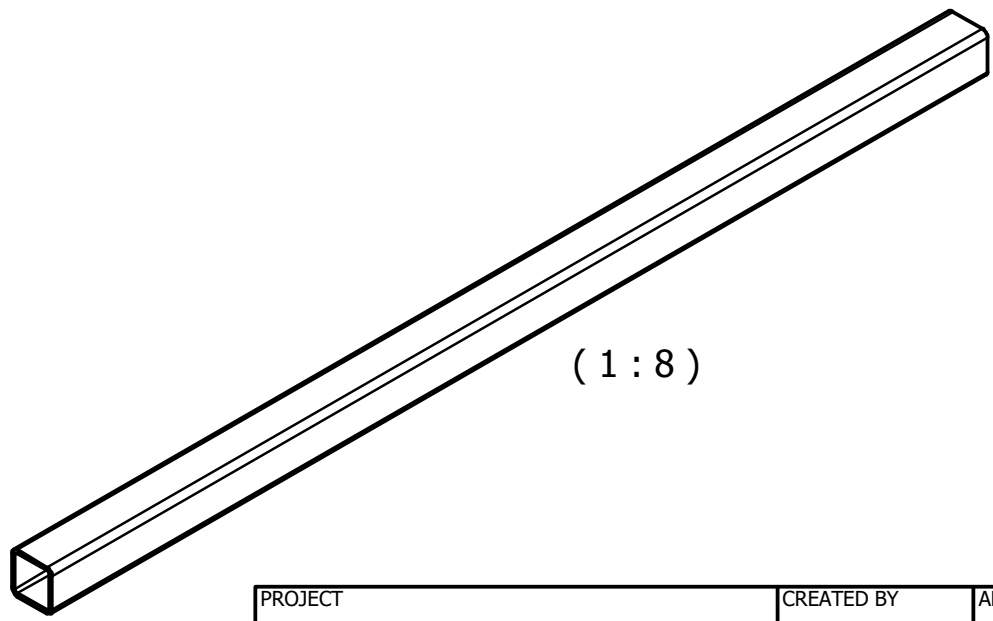
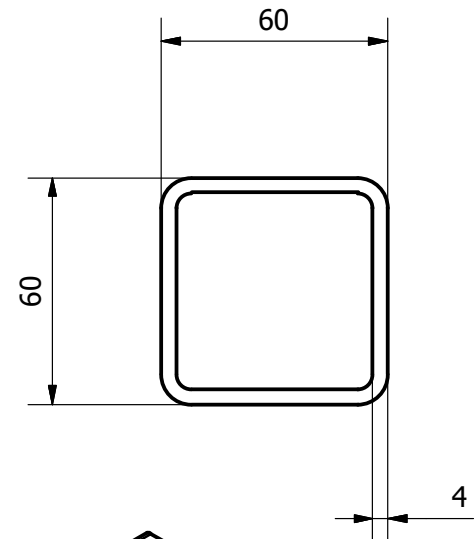
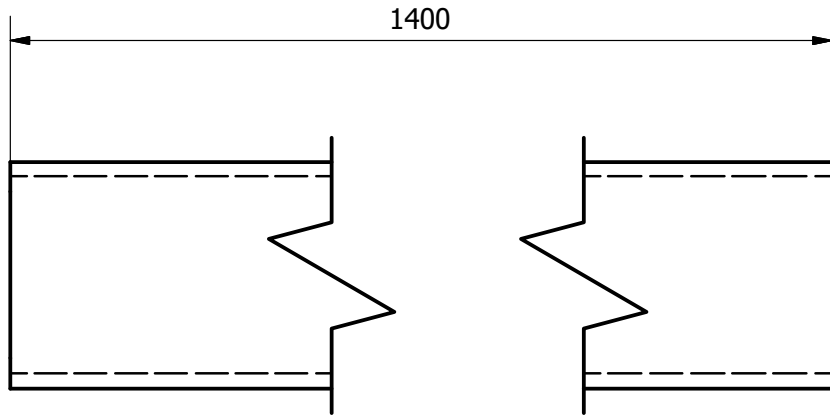


(1 : 4)


PROJECT	CREATED BY	APROVED BY		
Workshop Crane	A. MORILLO	D. JAEGER		
PART NAME	PART CODE	DOCUMENT TYPE	MATERIAL	
EN 10210-2 - 60 x 60 x 4 - 638.089	1.7	PART	STEEL A36	
 OPEN HARDWARE OBSERVATORY Free Blueprints for Sustainable Development	LICENCE	FILE NAME	VERSION	QUANTITY
	CC-BY-SA 4.0	DIN 60 x 60 x 4 00000009.ipt	1.0	1
		SCALE	SHEET	DATE
		1:2	13 /31	08/12/20

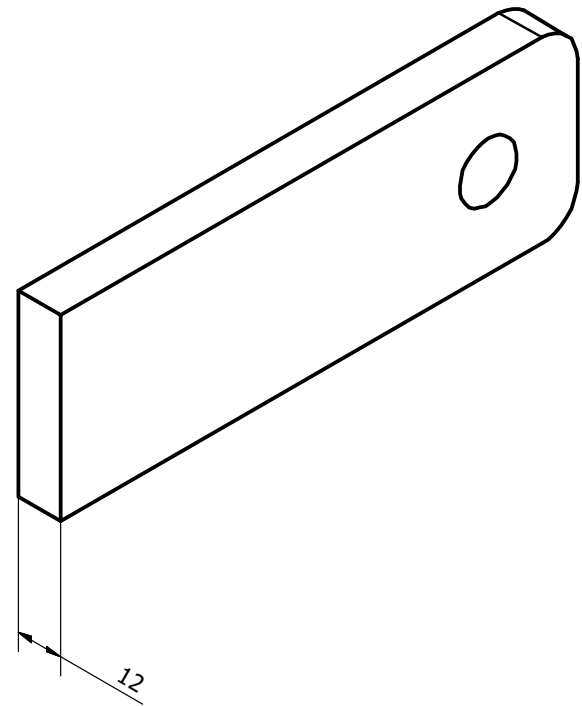
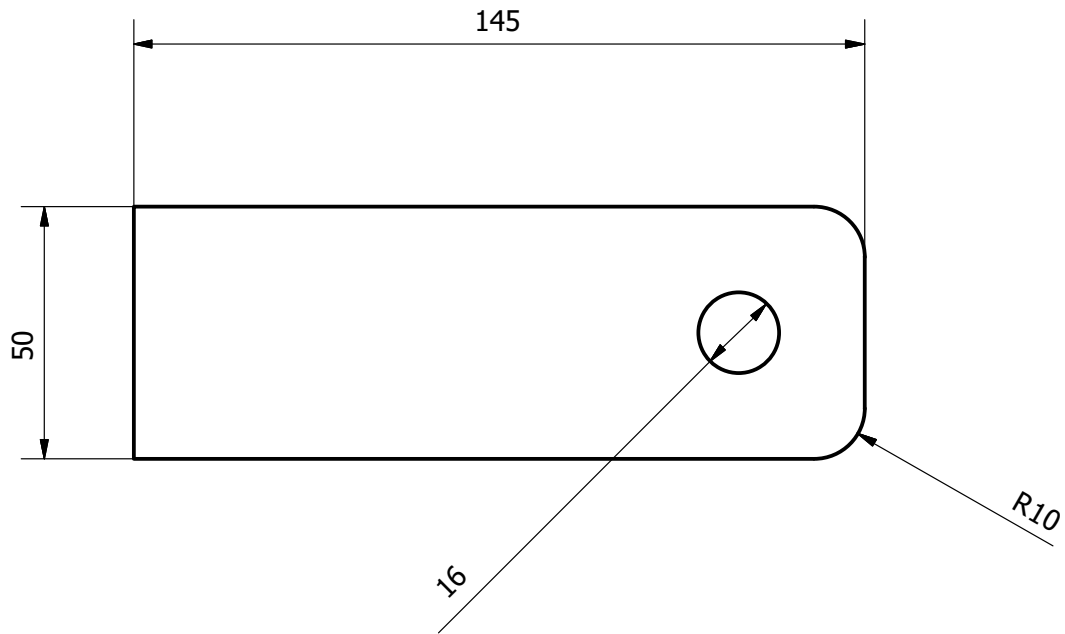



PROJECT	CREATED BY	APROVED BY		
Workshop Crane	A. MORILLO	D. JAEGER		
PART NAME	PART CODE	DOCUMENT TYPE	MATERIAL	
DIN 45 x 8 x 145	1.8	ASSEMBLY	STEEL A36	
 OPEN HARDWARE OBSERVATORY Free Blueprints for Sustainable Development	LICENCE	FILE NAME	VERSION	QUANTITY
	CC-BY-SA 4.0	DIN 45 x 8 x 145.ipt	1.0	4
		SCALE	SHEET	DATE
	1:1.5	14 /31	08/12/20	

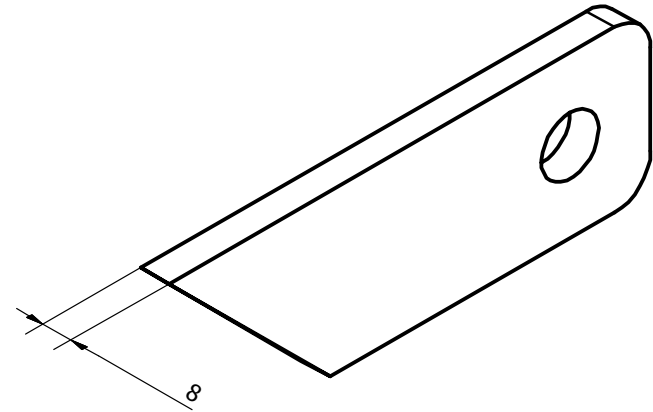
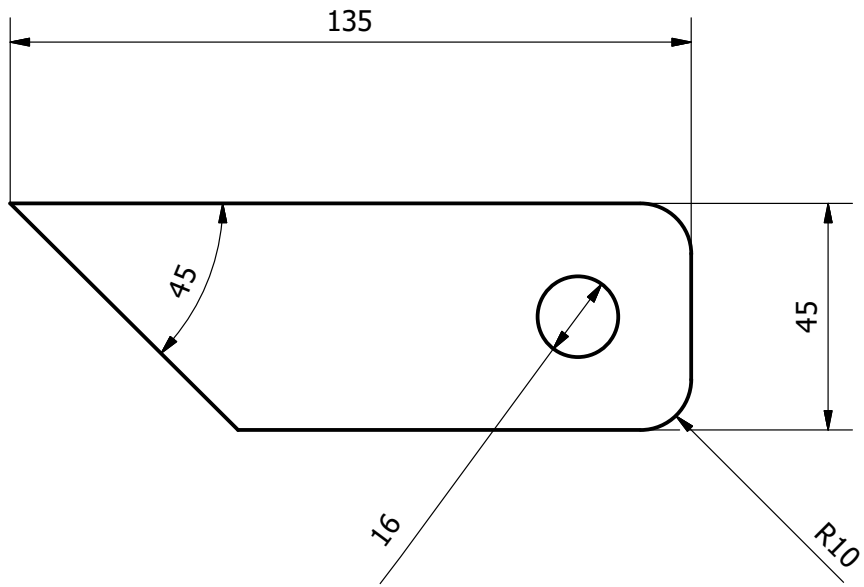



(1 : 8)

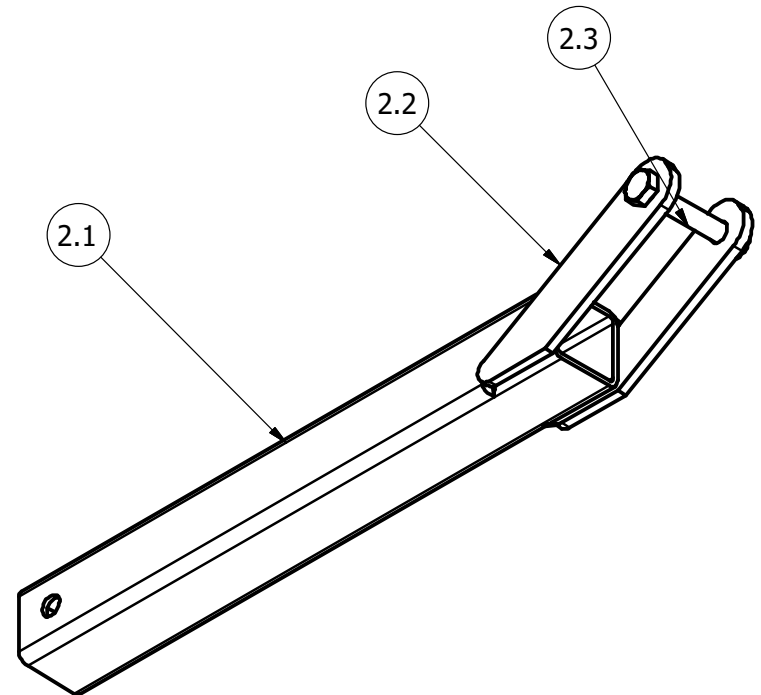
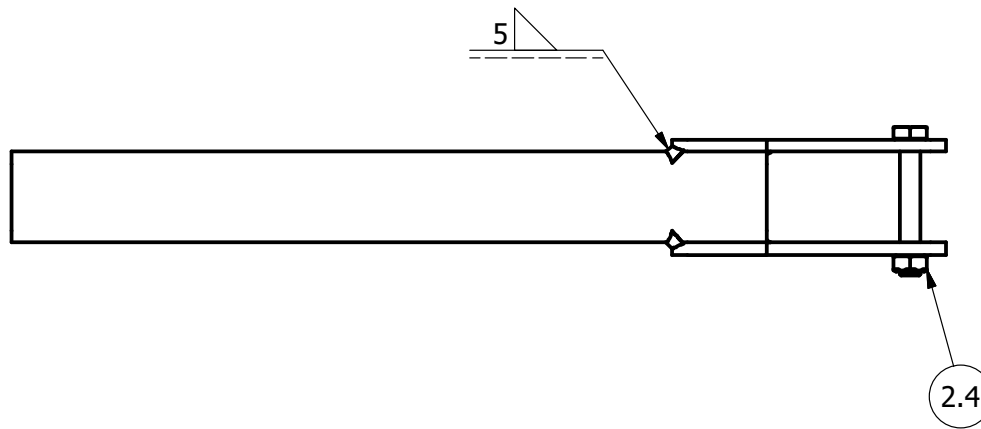
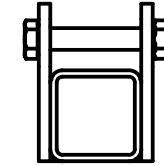
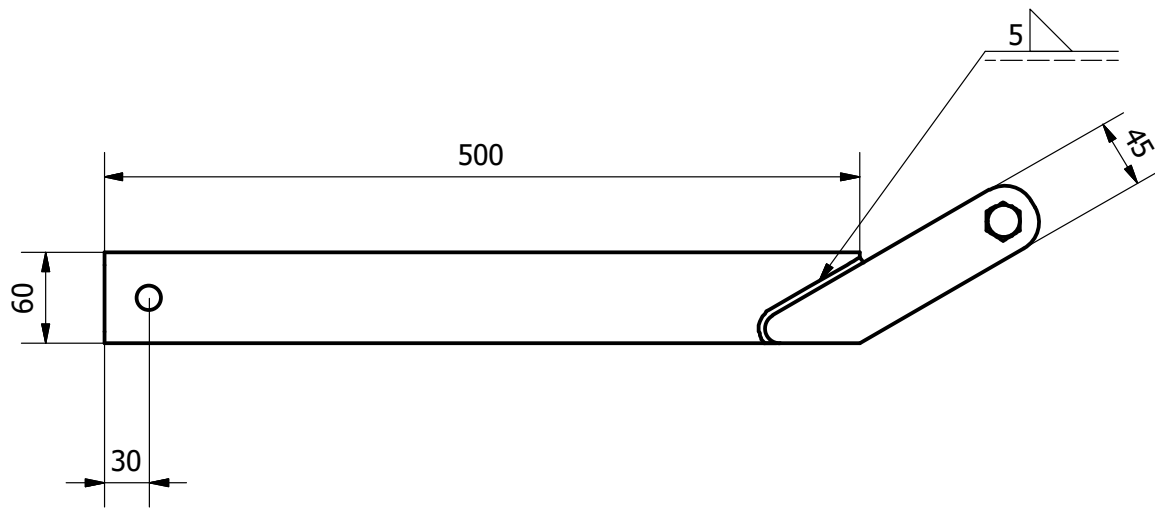
PROJECT		CREATED BY		APROVED BY	
Workshop Crane		A. MORILLO		D. JAEGER	
PART NAME		PART CODE		DOCUMENT TYPE	
EN 10210-2 - 60 x 60 x 4 - 1400		1.9		PART	
 OPEN HARDWARE OBSERVATORY Free Blueprints for Sustainable Development		LICENCE		FILE NAME	
		CC-BY-SA 4.0		DIN 60 x 60 x 4 00000014.ipt	
				MATERIAL	
				STEEL A36	
				VERSION	
				1.0	
				QUANTITY	
				1	
				SCALE	
				1:2	
				SHEET	
				15 /31	
				DATE	
				08/12/20	




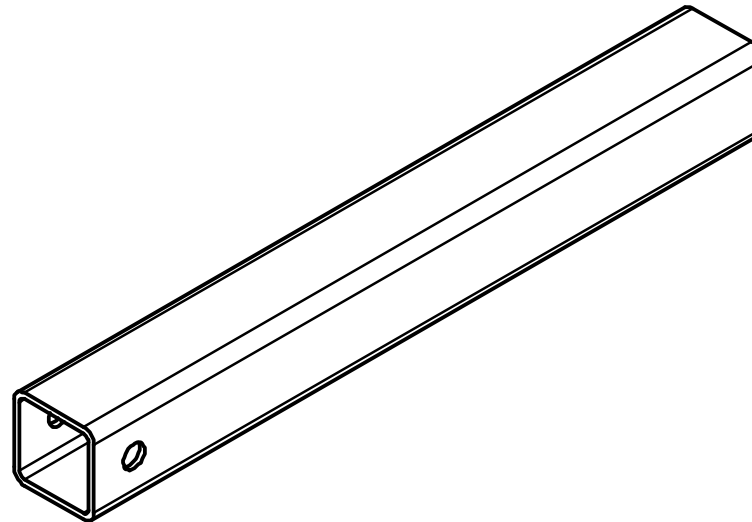
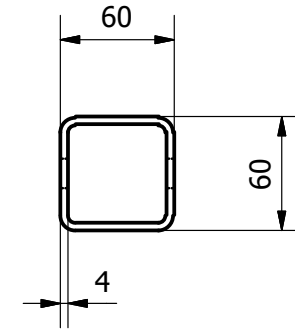
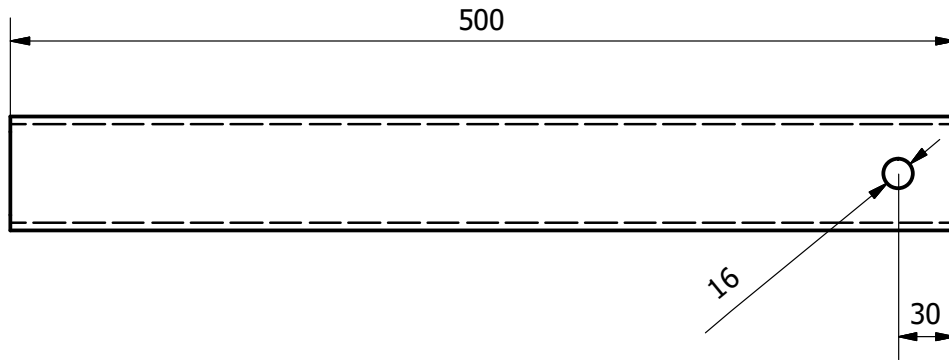
PROJECT	CREATED BY	APROVED BY		
Workshop Crane	A. MORILLO	D. JAEGER		
PART NAME	PART CODE	DOCUMENT TYPE	MATERIAL	
DIN 50 x 12 x 145	1.10	ASSEMBLY	STEEL A36	
 OPEN HARDWARE OBSERVATORY Free Blueprints for Sustainable Development	LICENCE	FILE NAME	VERSION	QUANTITY
	CC-BY-SA 4.0	DIN 50 x 12 x 145.ipt	1.0	4
		SCALE	SHEET	DATE
		1:1.5	16 /31	08/12/20




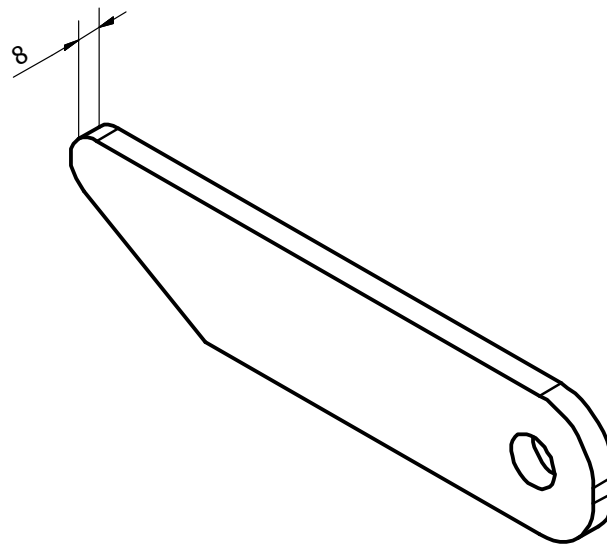
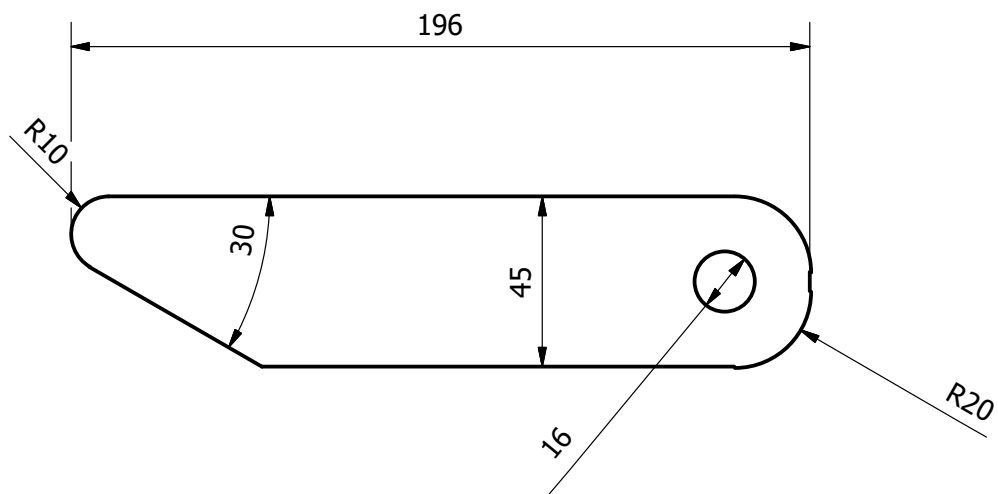
PROJECT	CREATED BY	APROVED BY		
Workshop Crane	A. MORILLO	D. JAEGER		
PART NAME	PART CODE	DOCUMENT TYPE	MATERIAL	
DIN 45 x 8 x 135	1.12	ASSEMBLY	STEEL A36	
 OPEN HARDWARE OBSERVATORY Free Blueprints for Sustainable Development	LICENCE	FILE NAME	VERSION	QUANTITY
	CC-BY-SA 4.0	DIN 45 x 8 x 135.ipt	1.0	2
		SCALE	SHEET	DATE
	1:1.5	17 /31	08/12/20	




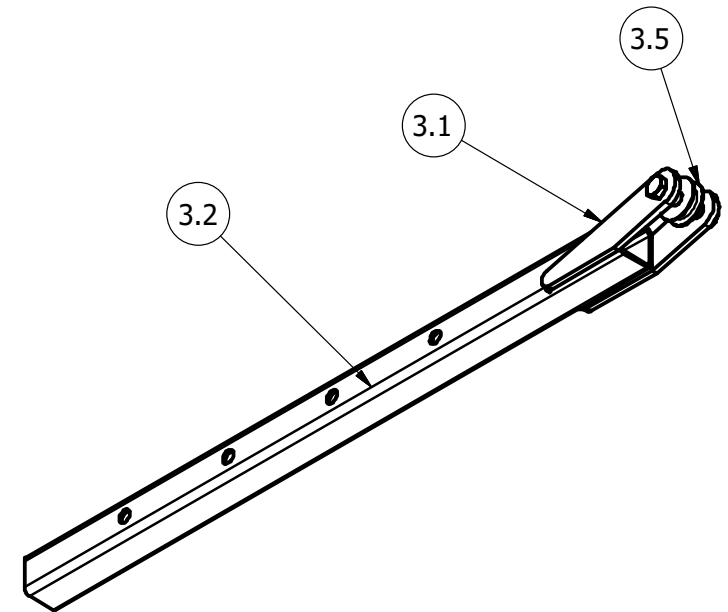
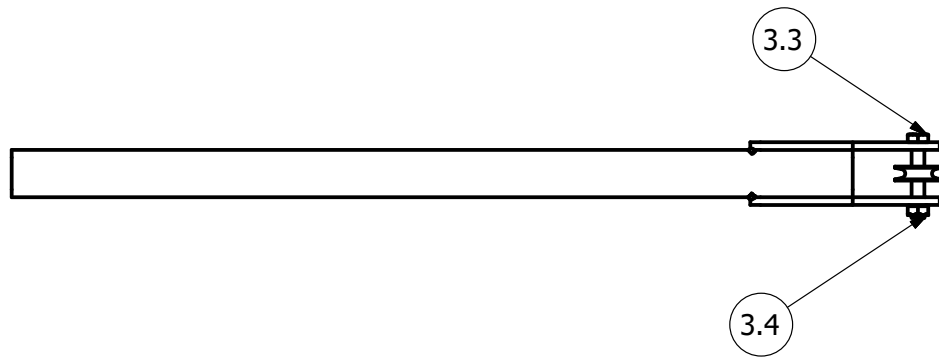
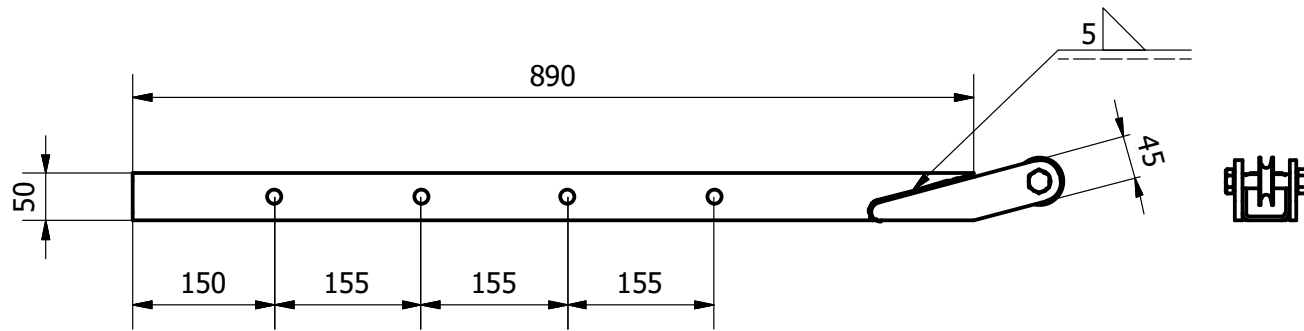
PROJECT	CREATED BY	APROVED BY		
Workshop Crane	A. MORILLO	D. JAEGER		
PART NAME	PART CODE	DOCUMENT TYPE	MATERIAL	
pivot-arm	2	ASSEMBLY	STEEL A36	
 OPEN HARDWARE OBSERVATORY Free Blueprints for Sustainable Development	LICENCE	FILE NAME	VERSION	QUANTITY
	CC-BY-SA 4.0	pivot-arm.iam	1.0	1
		SCALE	SHEET	DATE
		1:5	18 /31	08/12/20




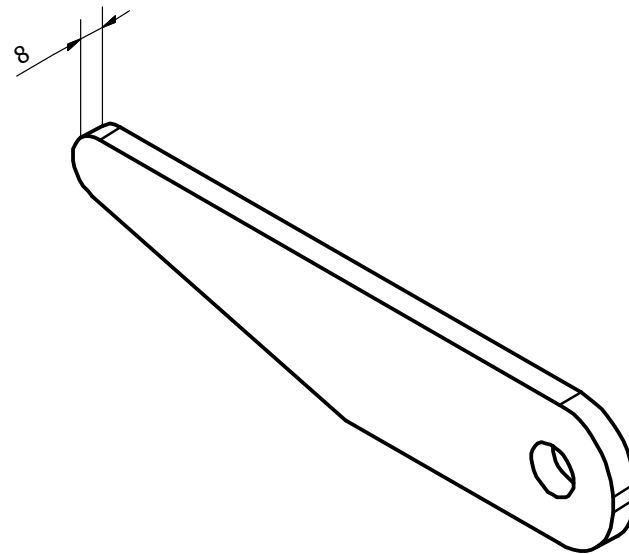
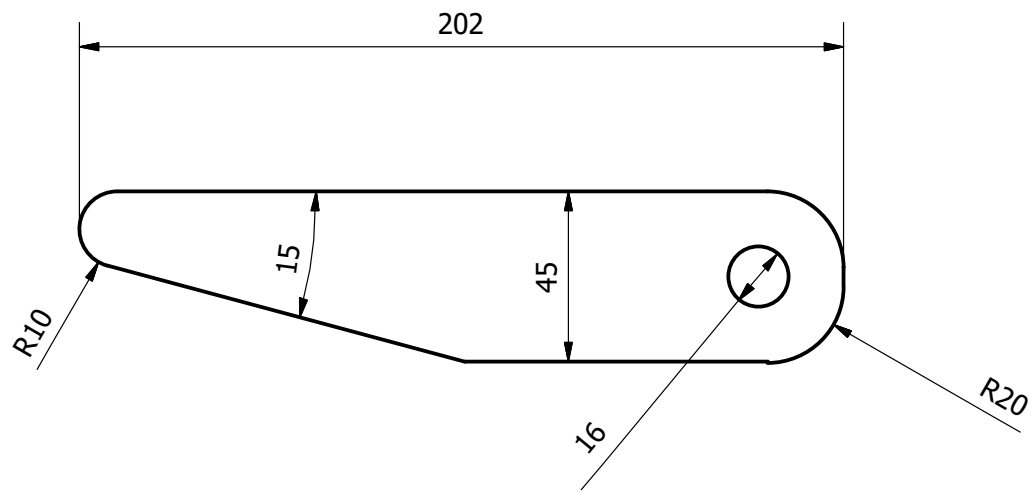
PROJECT		CREATED BY	APROVED BY	
Workshop Crane		A. MORILLO	D. JAEGER	
PART NAME		PART CODE	DOCUMENT TYPE	MATERIAL
EN 10210-2 - 60 x 60 x 4 - 500		2.1	PART	STEEL A36
 OPEN HARDWARE OBSERVATORY Free Blueprints for Sustainable Development		LICENCE	FILE NAME	VERSION
		CC-BY-SA 4.0	DIN 60 x 60 x 4 00000001.ipt	1.0
			SCALE	SHEET
			1:4	19 /31
				QUANTITY
				1
				DATE
				08/12/20




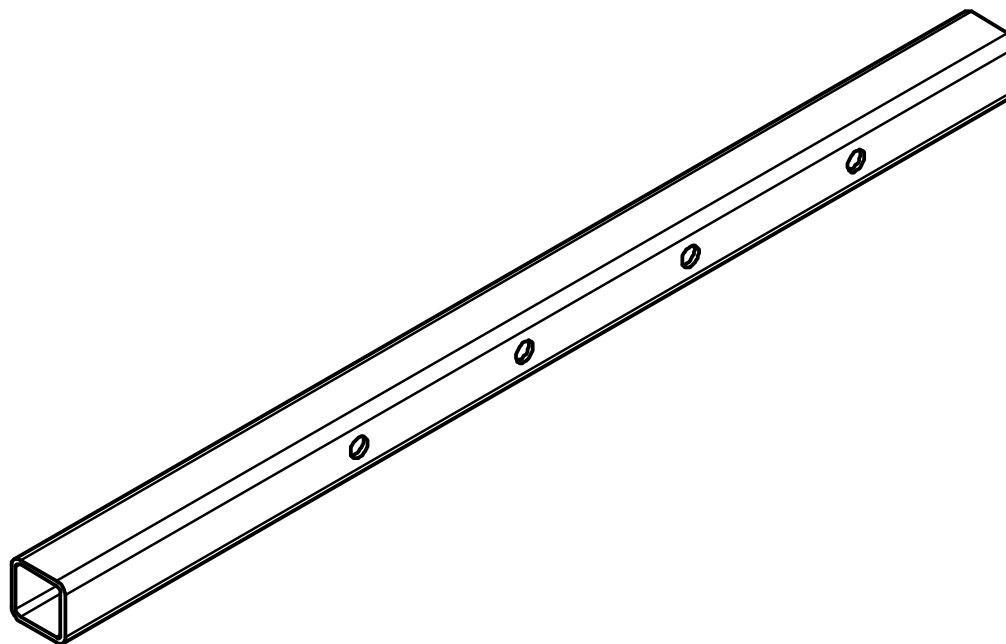
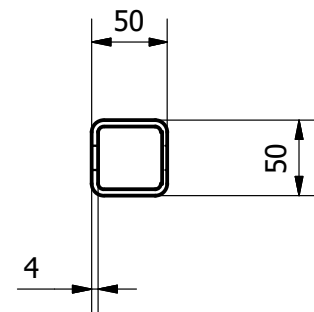
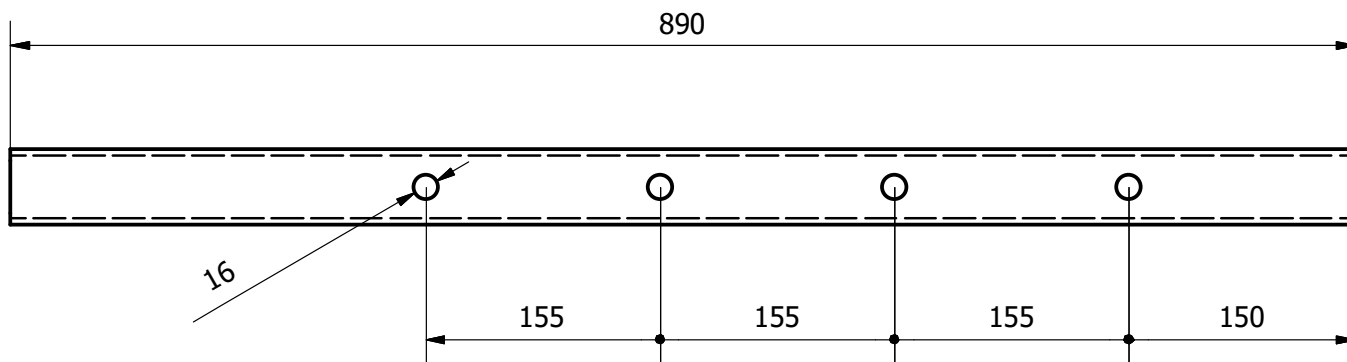
PROJECT	CREATED BY	APROVED BY		
Workshop Crane	A. MORILLO	D. JAEGER		
PART NAME	PART CODE	DOCUMENT TYPE	MATERIAL	
EN 10058 - 45 x 8 - 222.942	2.2	PART	STEEL A36	
 OPEN HARDWARE OBSERVATORY Free Blueprints for Sustainable Development	LICENCE	FILE NAME	VERSION	QUANTITY
	CC-BY-SA 4.0	DIN 45 x 8 00000002.ipt	1.0	2
		SCALE	SHEET	DATE
			20 /31	08/12/20




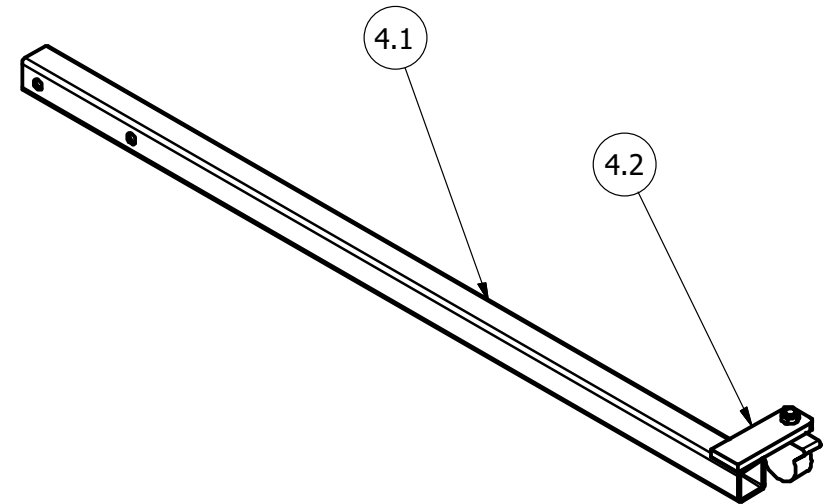
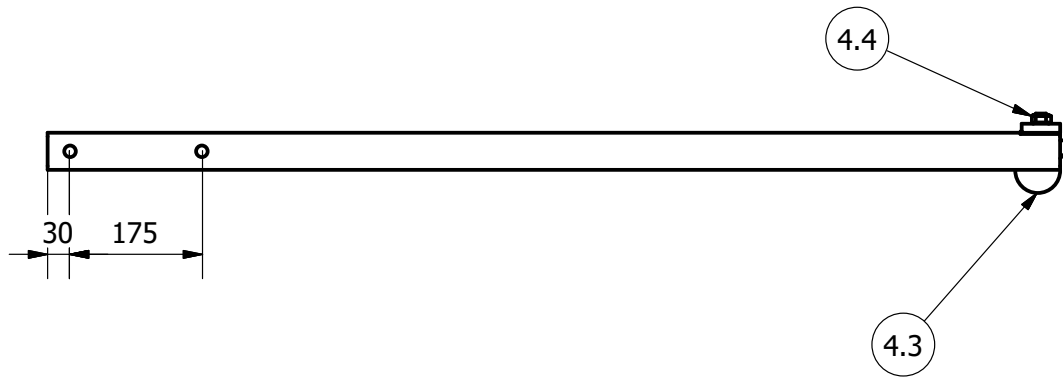
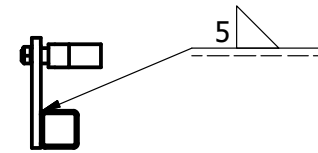
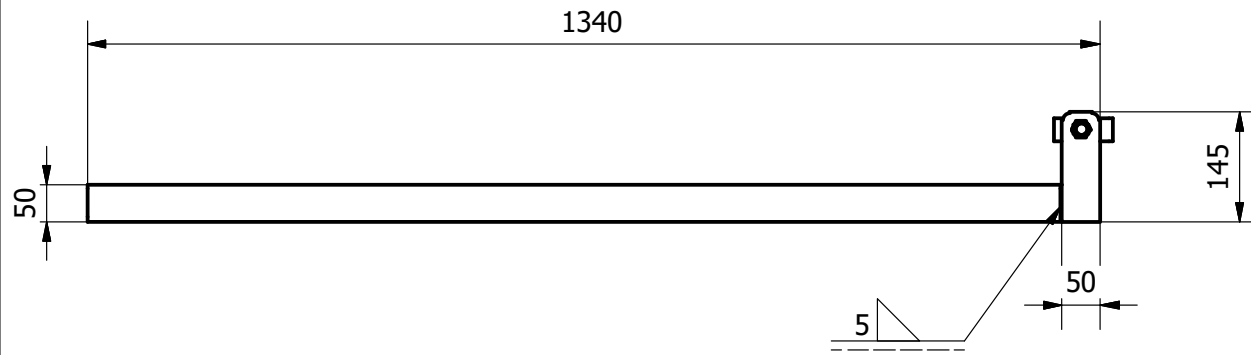
PROJECT	CREATED BY	APROVED BY		
Workshop Crane	A. MORILLO	D. JAEGER		
PART NAME	PART CODE	DOCUMENT TYPE	MATERIAL	
telescopic-tube	3	ASSEMBLY	STEEL A36	
 OPEN HARDWARE OBSERVATORY Free Blueprints for Sustainable Development	LICENCE	FILE NAME	VERSION	QUANTITY
	CC-BY-SA 4.0	telescopic-tube.iam	1.0	1
		SCALE	SHEET	DATE
		1:8	21 /31	08/12/20




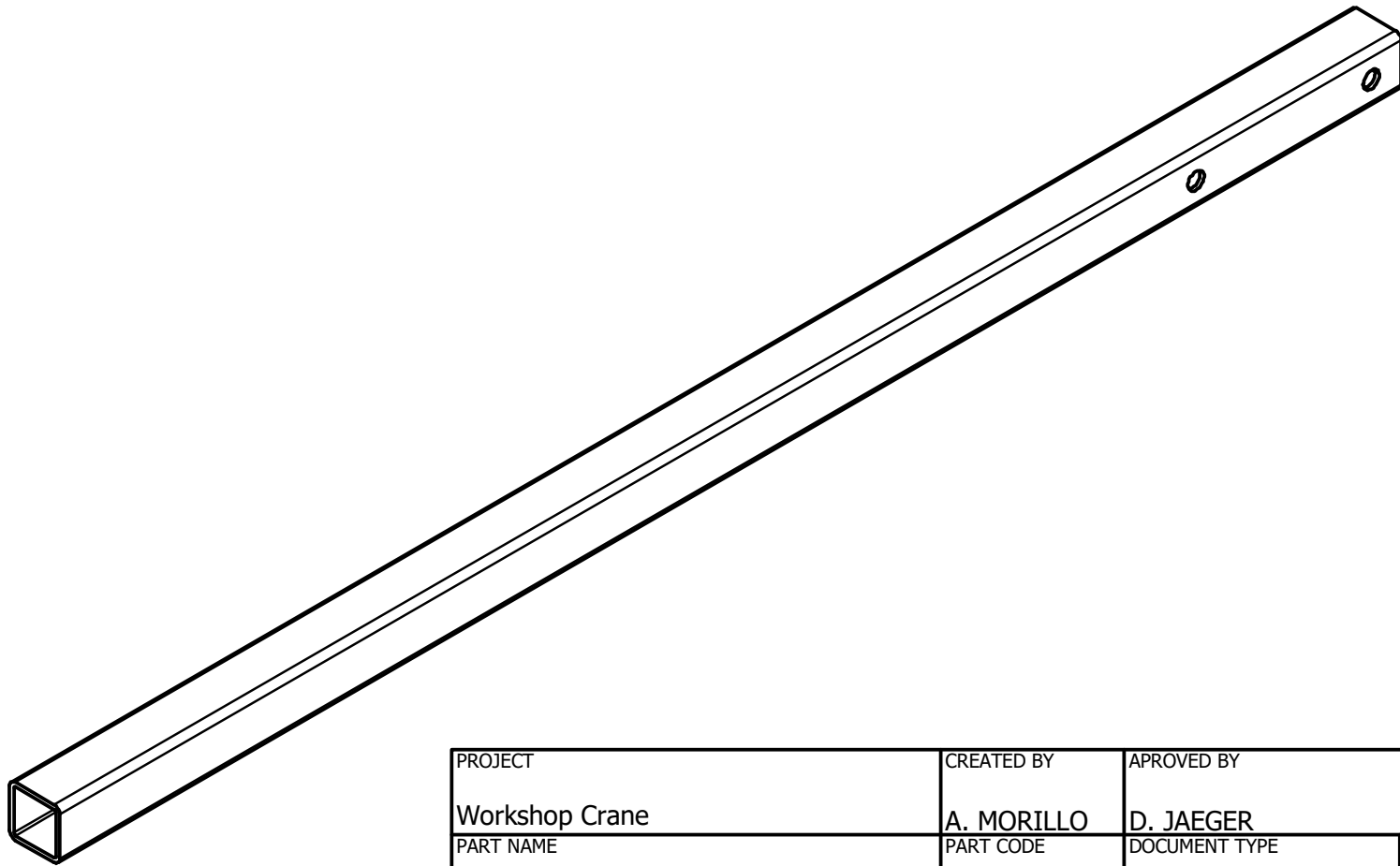
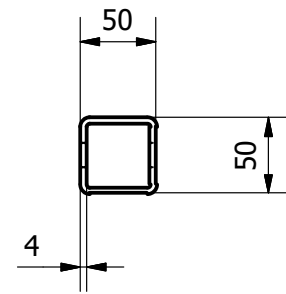
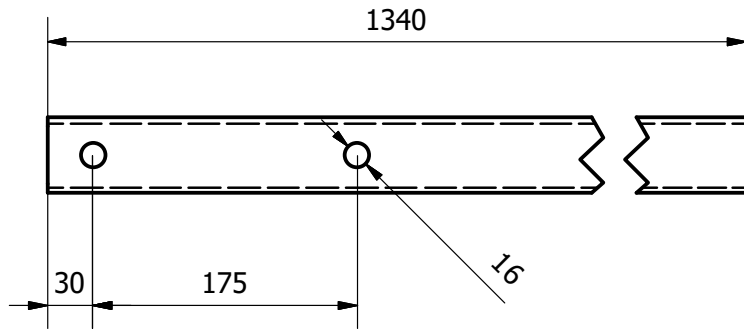
PROJECT	CREATED BY	APROVED BY		
Workshop Crane	A. MORILLO	D. JAEGER		
PART NAME	PART CODE	DOCUMENT TYPE	MATERIAL	
EN 10058 - 45 x 8 - 267.942	3.1	PART	STEEL A36	
 OPEN HARDWARE OBSERVATORY Free Blueprints for Sustainable Development	LICENCE	FILE NAME	VERSION	QUANTITY
	CC-BY-SA 4.0	DIN 45 x 8 00000001.ipt	1.0	2
		SCALE	SHEET	DATE
			22 /31	08/12/20




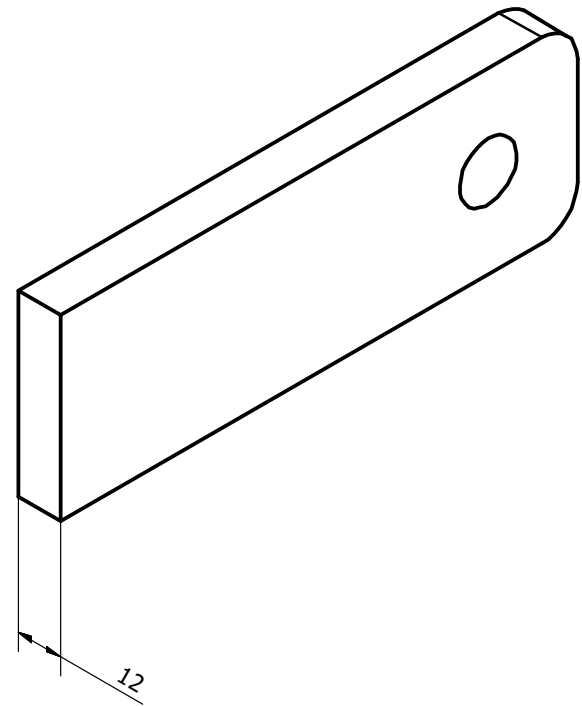
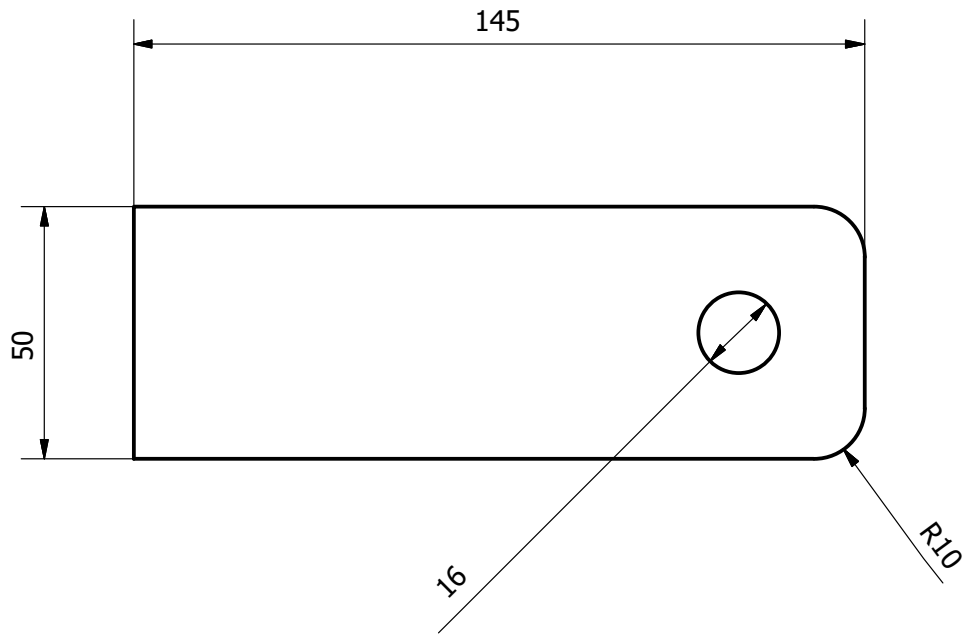
PROJECT	CREATED BY	APROVED BY		
Workshop Crane	A. MORILLO	D. JAEGER		
PART NAME	PART CODE	DOCUMENT TYPE	MATERIAL	
DIN 59 410 - 50x50x4-890	3.2	PART	STEEL A36	
 OPEN HARDWARE OBSERVATORY Free Blueprints for Sustainable Development	LICENCE	FILE NAME	VERSION	QUANTITY
	CC-BY-SA 4.0	DIN 50x50x4 00000003.ipt	1.0	1
		SCALE	SHEET	DATE
		1:5	23 /31	08/12/20




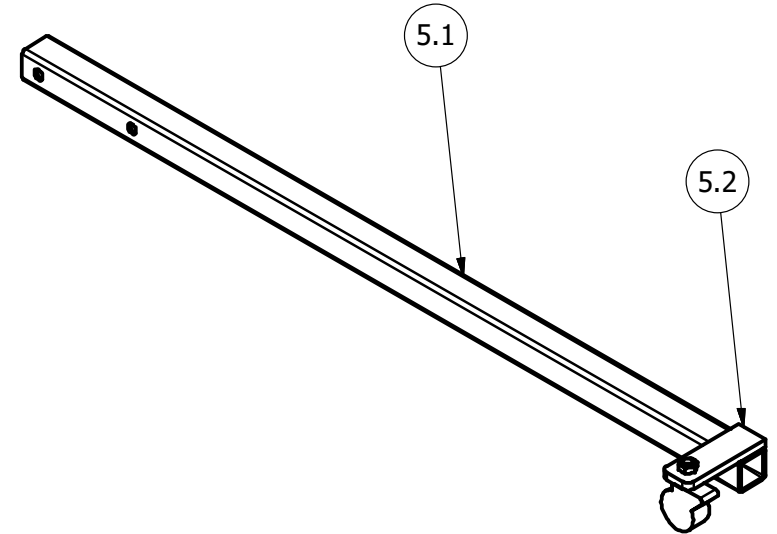
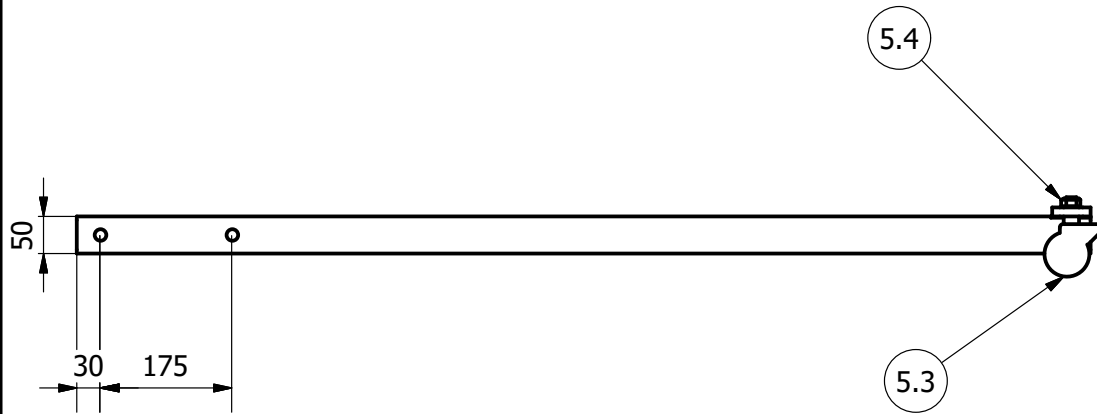
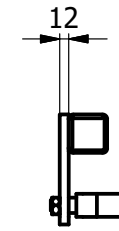
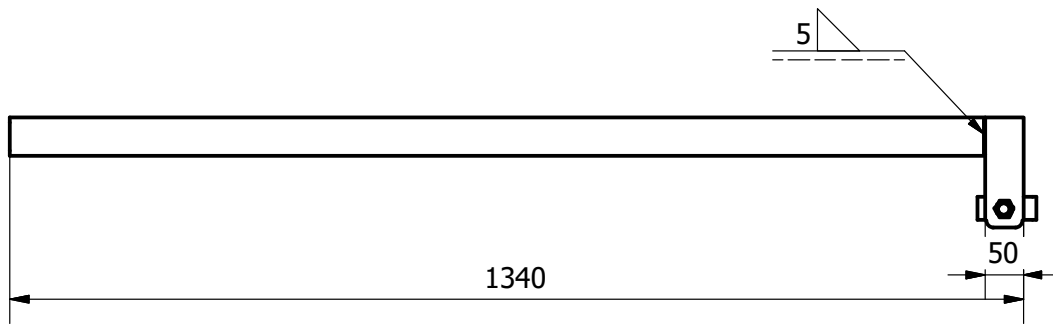
PROJECT	CREATED BY	APROVED BY		
Workshop Crane	A. MORILLO	D. JAEGER		
PART NAME	PART CODE	DOCUMENT TYPE	MATERIAL	
left-leg	4	ASSEMBLY	STEEL A36	
 OPEN HARDWARE OBSERVATORY Free Blueprints for Sustainable Development	LICENCE	FILE NAME	VERSION	QUANTITY
	CC-BY-SA 4.0	left-leg.iam	1.0	1
		SCALE	SHEET	DATE
		1:10	24 /31	08/12/20




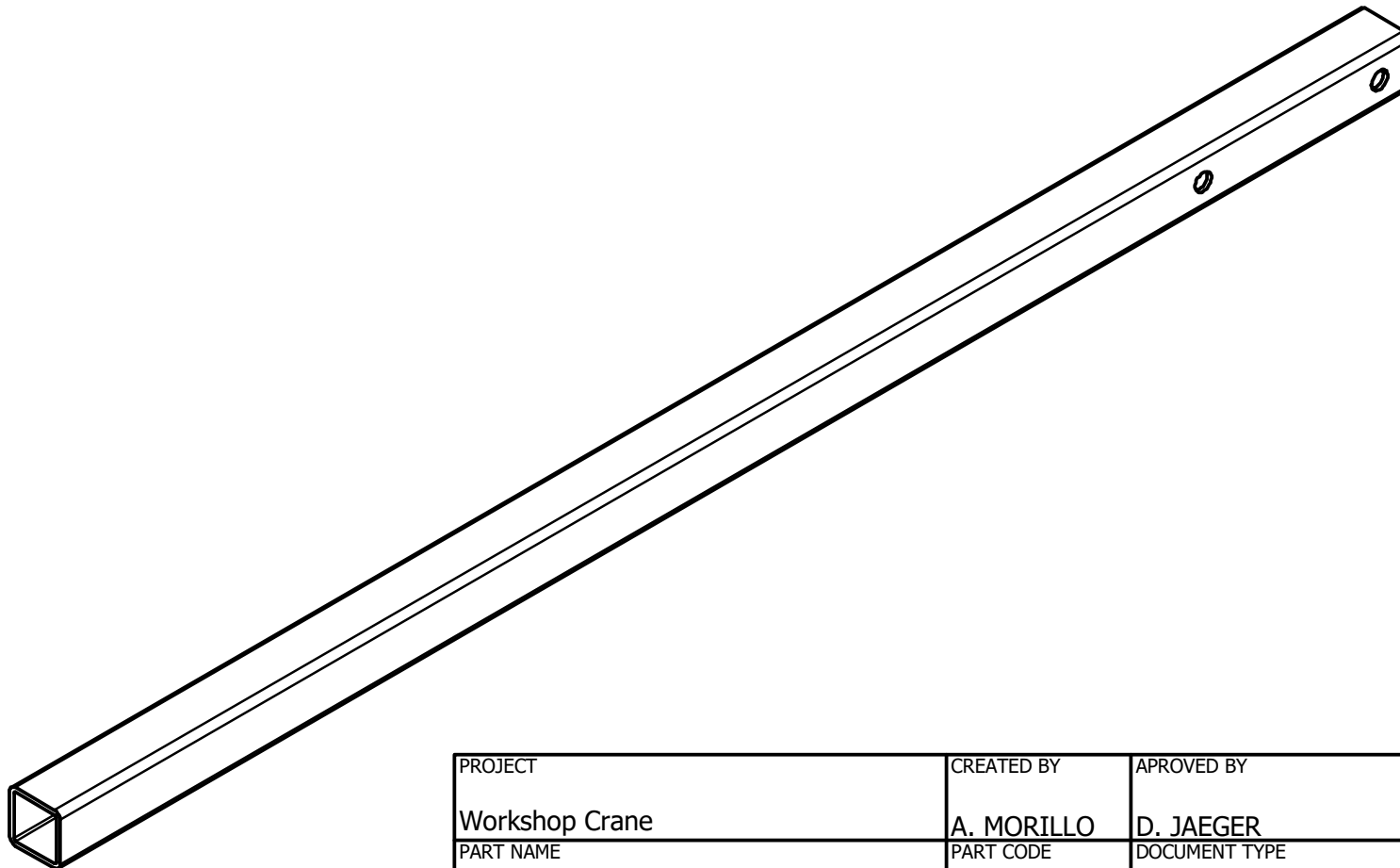
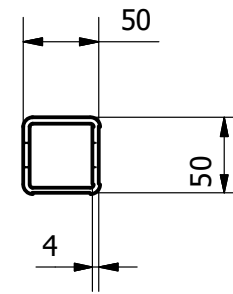
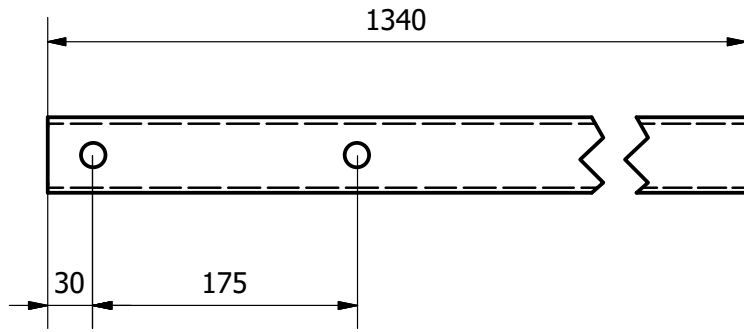
PROJECT	CREATED BY	APROVED BY		
Workshop Crane	A. MORILLO	D. JAEGER		
PART NAME	PART CODE	DOCUMENT TYPE	MATERIAL	
EN 10210-2 - 50 x 50 x 4 - 1340	4.1	PART	STEEL A36	
 OPEN HARDWARE OBSERVATORY Free Blueprints for Sustainable Development	LICENCE	FILE NAME	VERSION	QUANTITY
	CC-BY-SA 4.0	DIN 50 x 50 x 4 00000002.ipt	1.0	1
		SCALE	SHEET	DATE
		1:5	25 /31	08/12/20




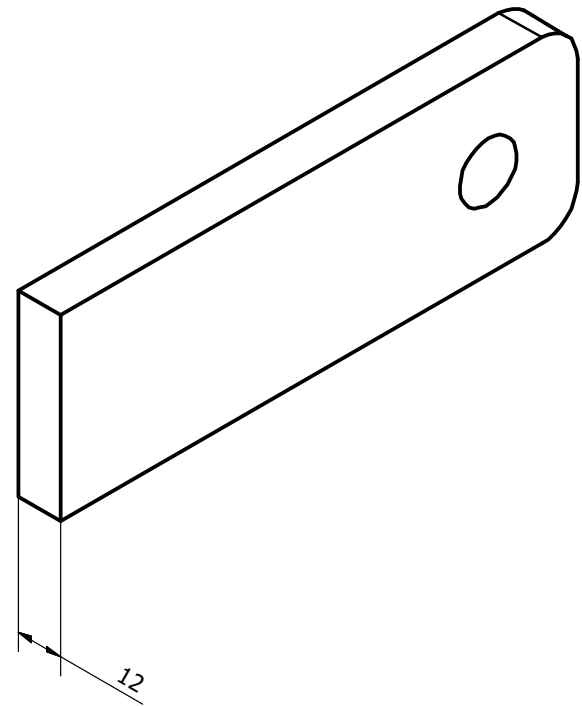
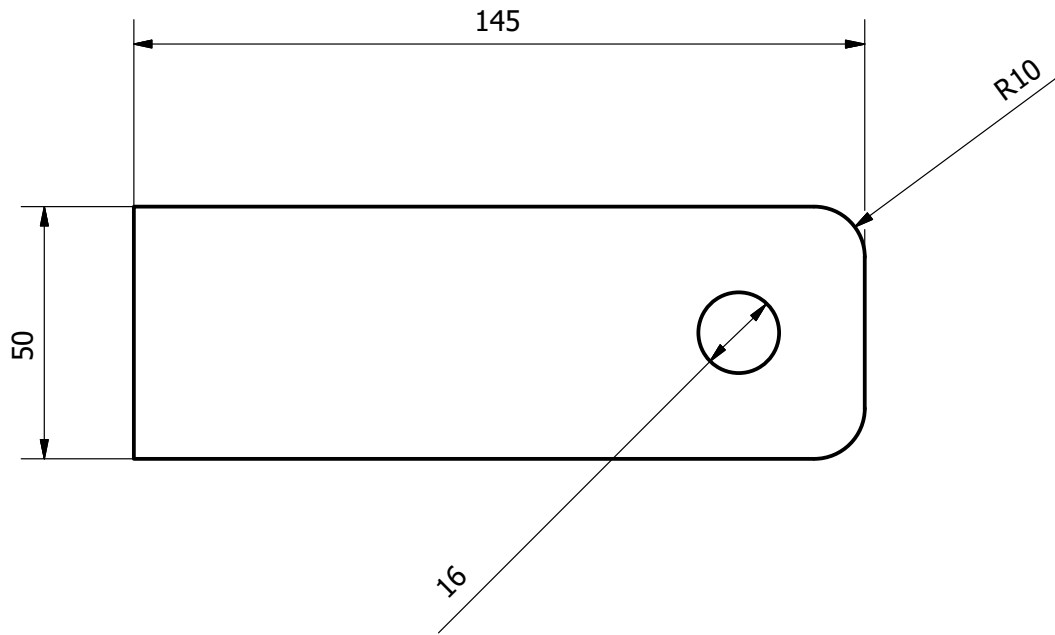
PROJECT	CREATED BY	APROVED BY		
Workshop Crane	A. MORILLO	D. JAEGER		
PART NAME	PART CODE	DOCUMENT TYPE	MATERIAL	
EN 10058 - 50 x 12 - 145	4.2	ASSEMBLY	STEEL A36	
 OPEN HARDWARE OBSERVATORY Free Blueprints for Sustainable Development	LICENCE	FILE NAME	VERSION	QUANTITY
	CC-BY-SA 4.0	DIN 50 x 12 00000003.ipt	1.0	1
		SCALE	SHEET	DATE
		1:1.5	26 /31	08/12/20




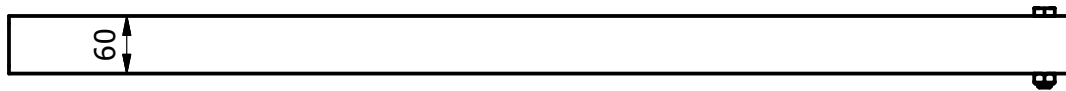
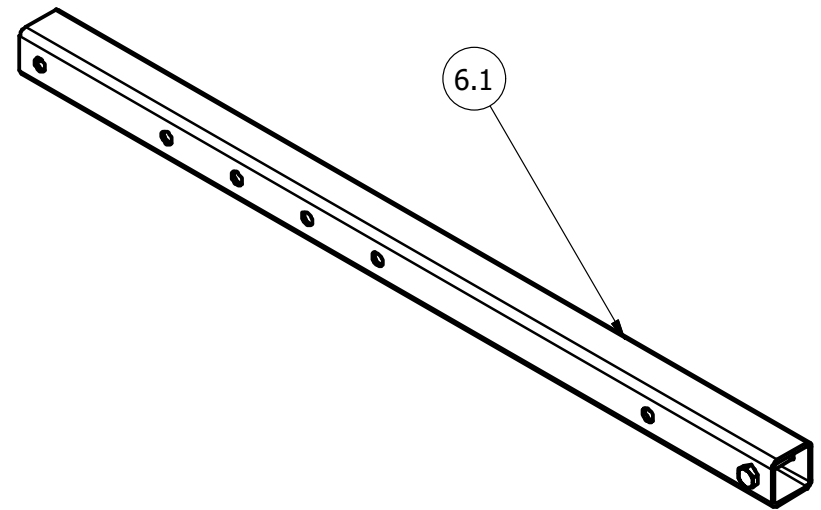
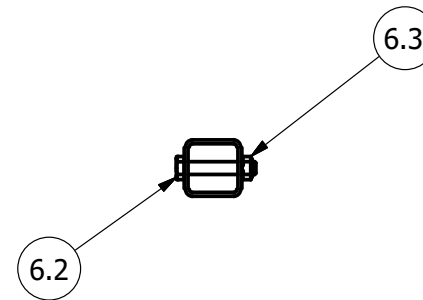
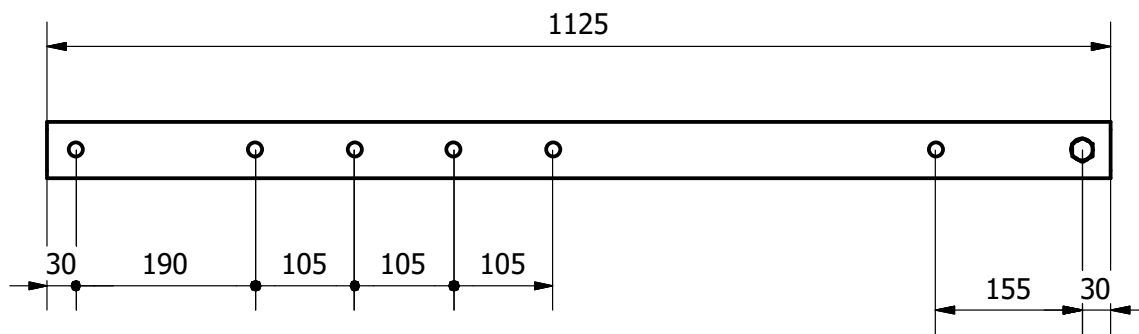
PROJECT	CREATED BY	APROVED BY		
Workshop Crane	A. MORILLO	D. JAEGER		
PART NAME	PART CODE	DOCUMENT TYPE	MATERIAL	
right-leg	5	ASSEMBLY	STEEL A36	
 OPEN HARDWARE OBSERVATORY Free Blueprints for Sustainable Development	LICENCE	FILE NAME	VERSION	QUANTITY
	CC-BY-SA 4.0	right-leg.iam	1.0	1
			SCALE	SHEET
		1:10	27 /31	08/12/20




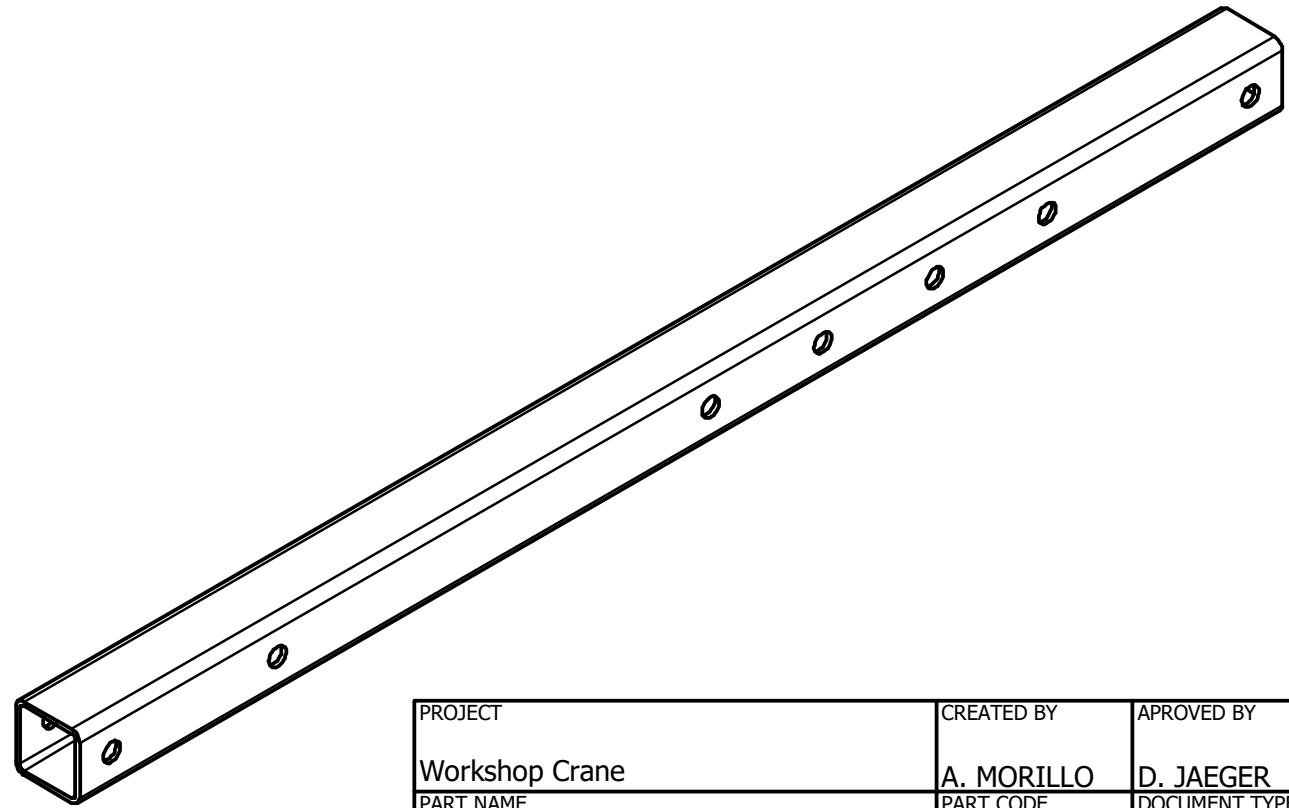
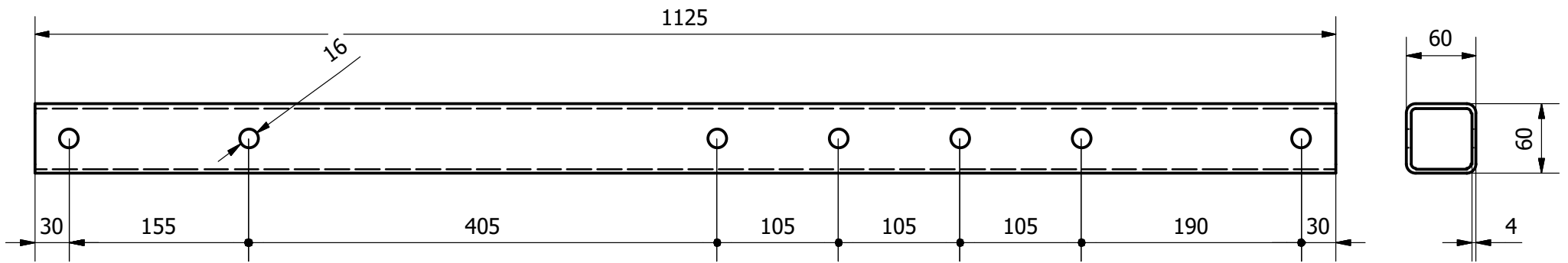
PROJECT	CREATED BY	APROVED BY		
Workshop Crane	A. MORILLO	D. JAEGER		
PART NAME	PART CODE	DOCUMENT TYPE	MATERIAL	
EN 10210-2 - 50 x 50 x 4 - 1340	5.1	PART	STEEL A36	
 OPEN HARDWARE OBSERVATORY Free Blueprints for Sustainable Development	LICENCE	FILE NAME	VERSION	QUANTITY
	CC-BY-SA 4.0	DIN 50 x 50 x 4 00000001.ipt	1.0	1
		SCALE	SHEET	DATE
		1:5	28 /31	08/12/20




PROJECT	CREATED BY	APROVED BY		
Workshop Crane	A. MORILLO	D. JAEGER		
PART NAME	PART CODE	DOCUMENT TYPE	MATERIAL	
EN 10058 - 50 x 12 - 145	5.2	ASSEMBLY	STEEL A36	
 OPEN HARDWARE OBSERVATORY Free Blueprints for Sustainable Development	LICENCE	FILE NAME	VERSION	QUANTITY
	CC-BY-SA 4.0	DIN 50 x 12 00000003.ipt	1.0	1
		SCALE	SHEET	DATE
		1:1.5	29 /31	08/12/20



PROJECT	CREATED BY	APROVED BY		
Workshop Crane	A. MORILLO	D. JAEGER		
PART NAME	PART CODE	DOCUMENT TYPE	MATERIAL	
arm	6	ASSEMBLY	STEEL A36	
 OPEN HARDWARE OBSERVATORY Free Blueprints for Sustainable Development	LICENCE	FILE NAME	VERSION	QUANTITY
	CC-BY-SA 4.0	arm.iam	1.0	1
		SCALE	SHEET	DATE
	1:8	30 /31	08/12/20	



PROJECT		CREATED BY		APROVED BY	
Workshop Crane		A. MORILLO		D. JAEGER	
PART NAME		PART CODE		DOCUMENT TYPE	
EN 10210-2 - 60 x 60 x 4 - 1125		6.1		PART	
 OPEN HARDWARE OBSERVATORY Free Blueprints for Sustainable Development		LICENCE		FILE NAME	
		CC-BY-SA 4.0		DIN EN 10219-2 - 60 x 60 x 4 - 1125.ipt	
				MATERIAL	
				STEEL A36	
				VERSION	
				1.0	
				QUANTITY	
				1	
				SCALE	
				1:5	
				SHEET	
				31 /31	
				DATE	
				08/12/20	