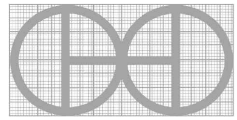
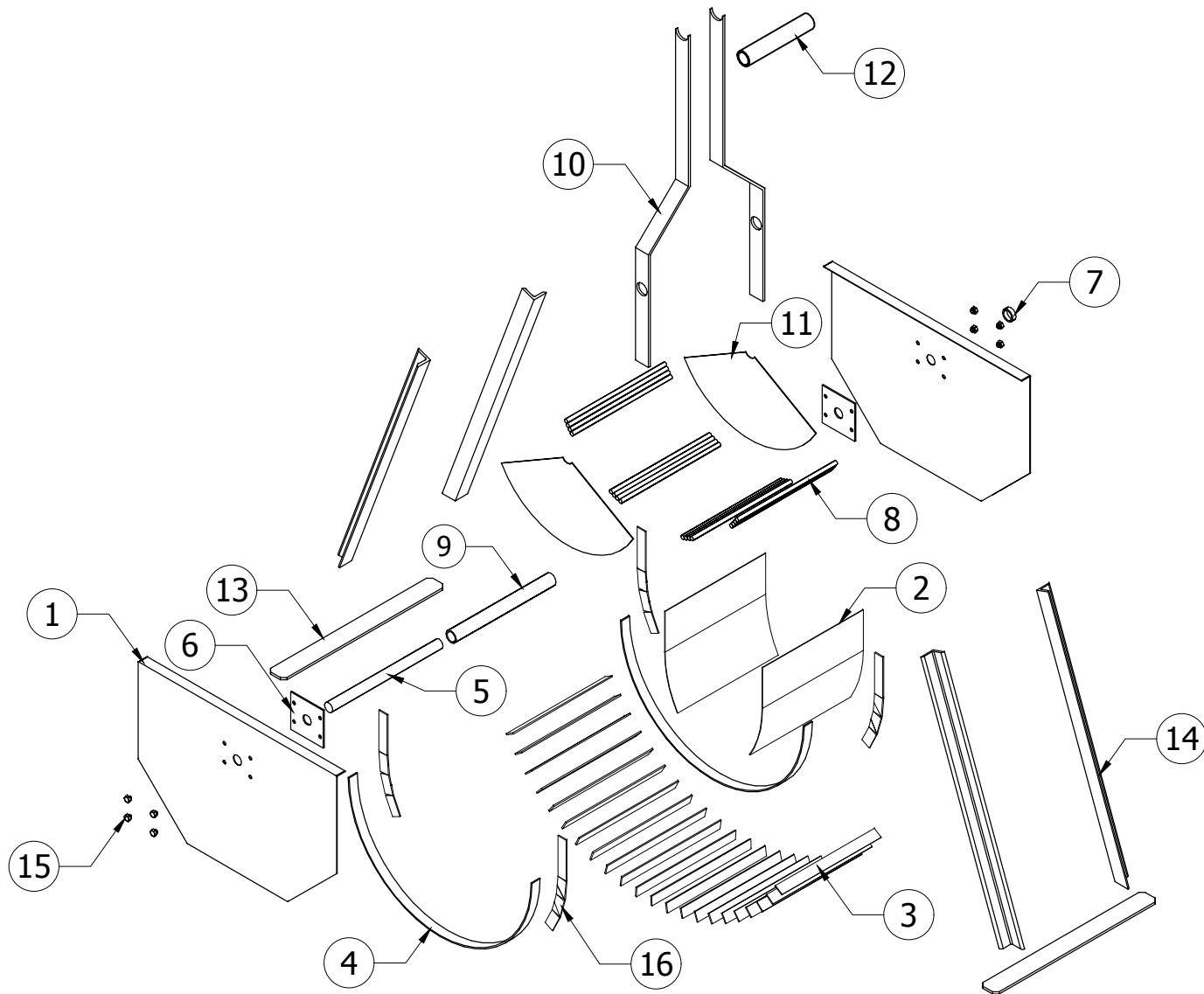
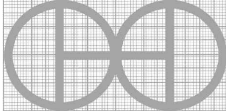


Note: All units in mm.

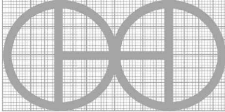
PROJECT	CREATED BY	APPROVED BY	DATE	VERSION
Groundnut huller	E. Araujo	A. Morillo	06/08/2021	1.0
PART NAME	FILE NAME			POS
3d views	oho_gh_groundnut_huller.dwg			A1
DEVELOPED BY	REDESIGNED BY	DOC. TYPE	MATERIAL	QUANTITY
		Assembly		1
Apt		CC-BY-SA 4.0	SCALE	SHEET
	OHO e.V.			1/19



PROJECT	CREATED BY	APPROVED BY	DATE	VERSION
Groundnut huller	E. Araujo	A. Morillo	06/08/2021	1.0
PART NAME	FILE NAME	POS		
Exploded 3d views	oho_gh_groundnut_huller.dwg	A2		
DEVELOPED BY	REDESIGNED BY	DOC. TYPE	MATERIAL	QUANTITY
		Assembly		1
Apt	OHO e.V.	LICENCE	SCALE	SHEET
		CC-BY-SA 4.0		2/19

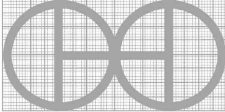
Parts list

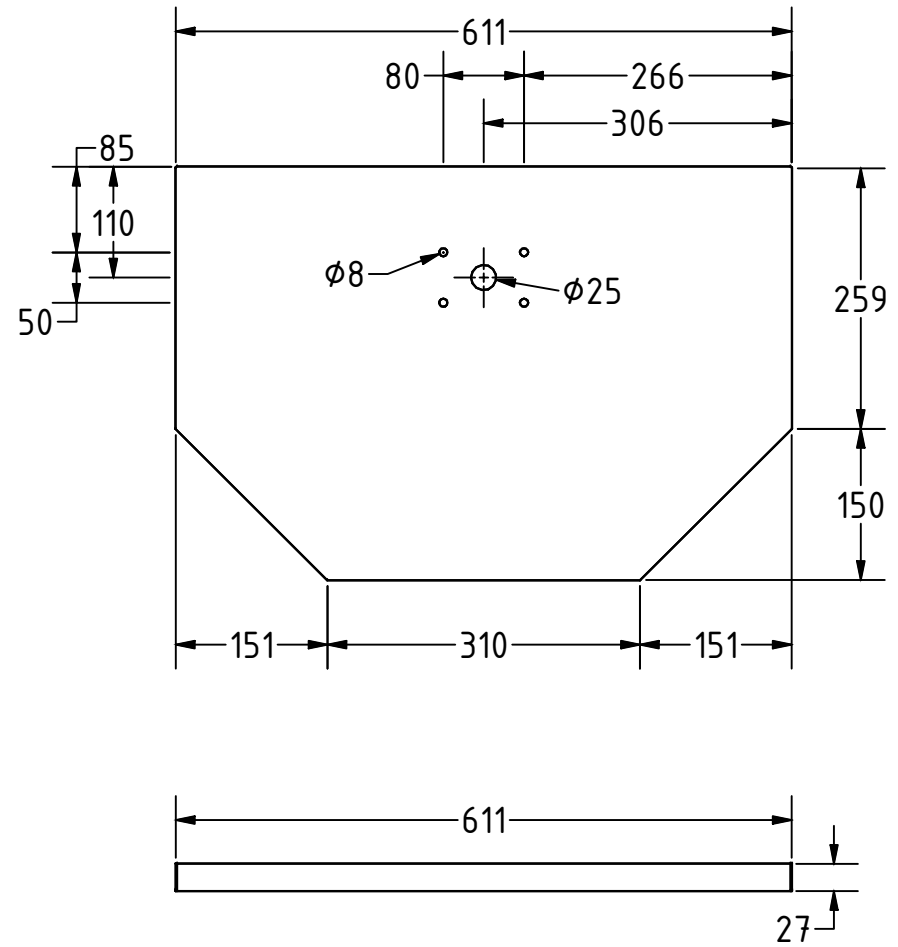
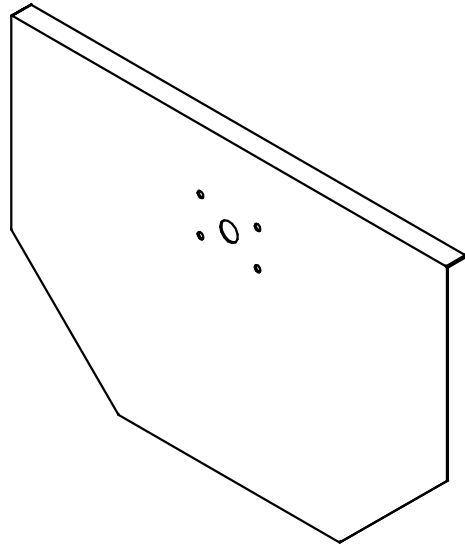
POS	QTY	PART NAME	FILE NAME	PART TYPE	SPECIFICATIONS	SHEET
A1		3d views	oho_gh_groundnut_huller.dwg			1
A2		Exploded 3d view	oho_gh_groundnut_huller.dwg			2
B1		Parts list	oho_gh_groundnut_huller.xlsx			3
C1		Technical notes	oho_gh_groundnut_huller.dwg			4
1	2	Sides	oho_gh_groundnut_huller.dwg	Production	Steel C45 1.5mm Plate	5
2	2	Ends	oho_gh_groundnut_huller.dwg	Production	Steel C45 1.5mm Plate	6
3	22	Grill bars	oho_gh_groundnut_huller.dwg	Production	Steel C45 25mm X 3mm Flat Bar	7
4	2	Retaining rings	oho_gh_groundnut_huller.dwg	Production	Steel C45 25mm X 3mm Flat Bar	8
5	1	Spindle	oho_gh_groundnut_huller.dwg	Production	Steel A36 Ø25 Bar	9
6	2	Plate	oho_gh_groundnut_huller.dwg	Production	Steel C45 3mm Plate	10
7	1	Collar	oho_gh_groundnut_huller.dwg	Production	Steel A36 Ø32 Pipe (Bore 25 min) X 10	11
8	16	Crusher bar	oho_gh_groundnut_huller.dwg	Production	Steel A36 Ø10 M.S Bar	12
9	1	Pivot	oho_gh_groundnut_huller.dwg	Production	Steel A36 Ø32 Pipe (Bore 25 min) X 10	13
10	2	Handle	oho_gh_groundnut_huller.dwg	Production	Steel A36 40 X 6 Flat Bar	14
11	2	Side plate	oho_gh_groundnut_huller.dwg	Production	Steel C45 1.5mm Plate- 1/3 Circle @ Ø500	15
12	1	Handle t bar	oho_gh_groundnut_huller.dwg	Production	Steel A36 Ø40mm Pipe	16
13	2	Feet	oho_gh_groundnut_huller.dwg	Production	Steel C45 50 X 6 Flat Bar	17
14	4	Legs	oho_gh_groundnut_huller.dwg	Production	Steel A36 38 X 38 Angle	18
15	8	Bolt		Buy	DIN 931 M8 Bolt x 10mm	
16	4	Folded profile	oho_gh_groundnut_huller.dwg	Production	Steel C45 25 X 3 Flat Bar	19

PROJECT		CREATED BY		APPROVED BY		DATE		VERSION	
Groundnut huller		E. Araujo		A. Morillo		06/08/2021		1.0	
PART NAME			FILE NAME					POS	
Parts list			oho_gh_groundnut_huller.xlsx					B1	
DEVELOPED BY			REDESIGNED BY		DOC. TYPE		MATERIAL		QUANTITY
Apt			 OHO e.V.		Parts list				
				LICENCE		SCALE		SHEET	
				CC-BY-SA 4.0				3/19	

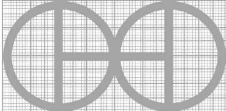
TECHNICAL NOTES

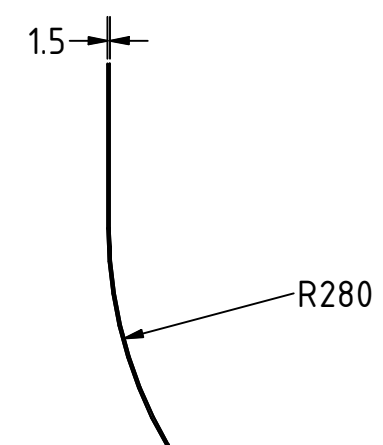
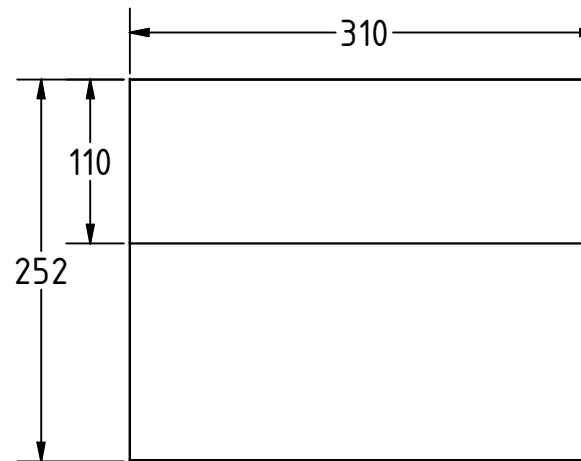
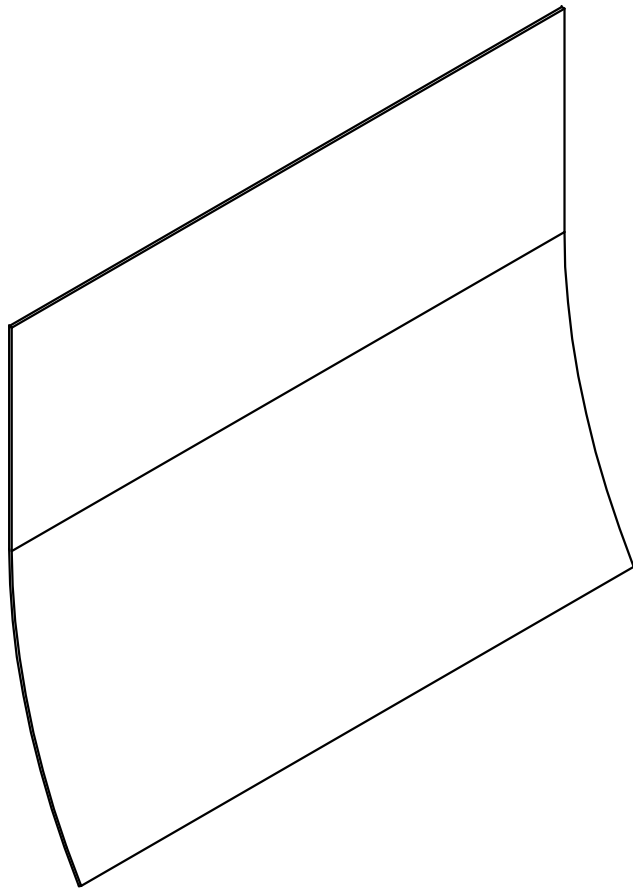
NOTES	CONTENT
GENERAL NOTES	
Metal structure treatment	Iron structures should be painted to prevent rust and improve equipment life. - Remove loose rust with a wire brush, sandpaper or chemical rust remover. - If applicable, sand areas where paint is chipping until surface is smooth. - Remove dust or oil with a degreaser or denatured alcohol. - Prime surface to protect against rust and corrosion

PROJECT Groundnut huller	CREATED BY E. Araujo	APPROVED BY A. Morillo	DATE 06/08/2021	VERSION 1.0
PART NAME Technical notes	FILE NAME oho_gh_groundnut_huller.dwg			POS C1
DEVELOPED BY Apt	REDESIGNED BY  OHO e.V.	DOC. TYPE T. Notes	MATERIAL	QUANTITY
		LICENCE CC-BY-SA 4.0	SCALE	SHEET 4/19

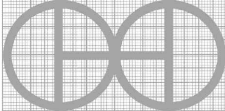


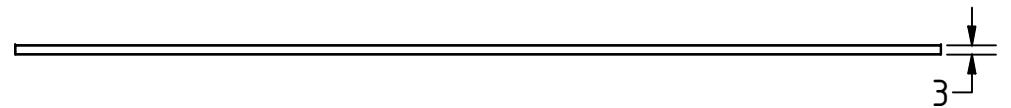
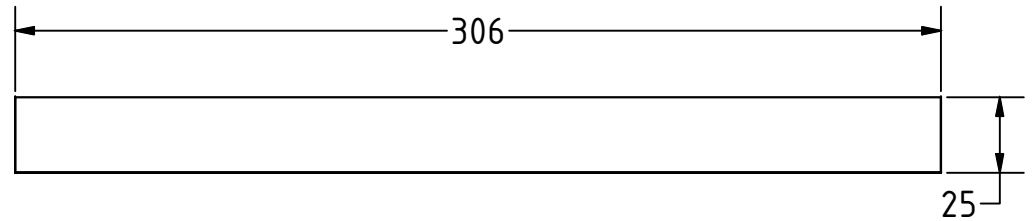
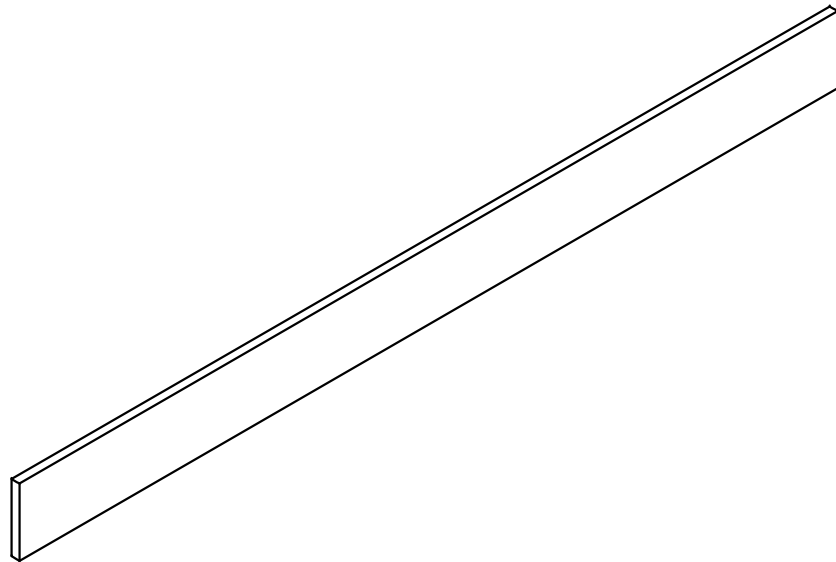
Note: All units in mm.

PROJECT	CREATED BY	APPROVED BY	DATE	VERSION
Groundnut huller	E. Araujo	A. Morillo	06/08/2021	1.0
PART NAME	FILE NAME			POS
Sides	oho_gh_groundnut_huller.dwg			1
DEVELOPED BY	REDESIGNED BY	DOC. TYPE	MATERIAL	QUANTITY
		Part	Steel C45	2
Apt	OHO e.V.	LICENCE	SCALE	SHEET
		CC-BY-SA 4.0	1:7.5	5/19

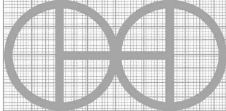


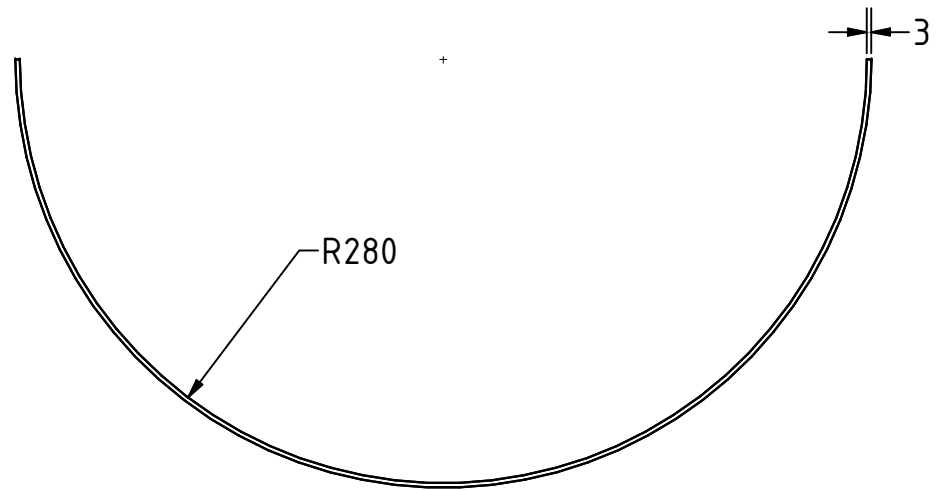
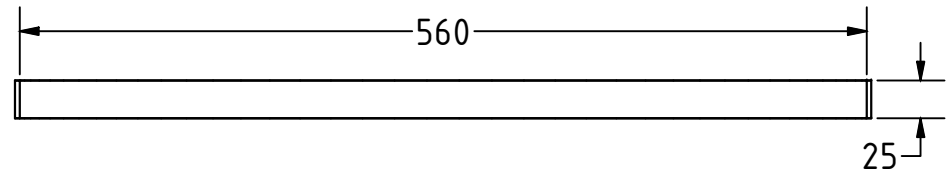
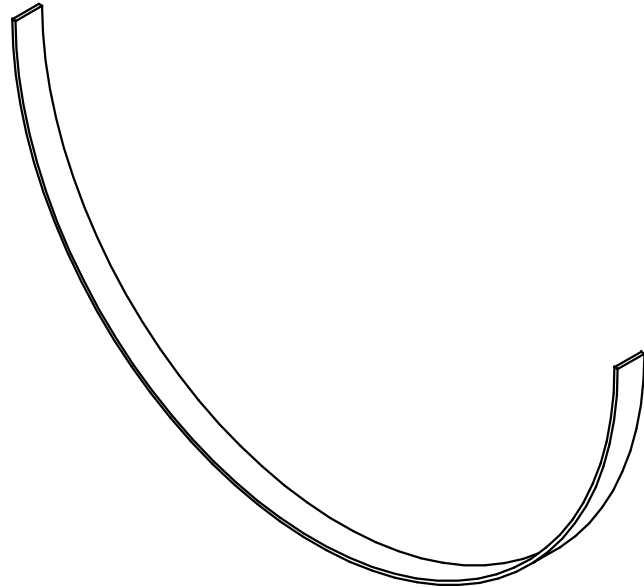
Note: All units in mm.

PROJECT	CREATED BY	APPROVED BY	DATE	VERSION
Groundnut huller	E. Araujo	A. Morillo	06/08/2021	1.0
PART NAME	FILE NAME	POS		
Ends	oho_gh_groundnut_huller.dwg	2		
DEVELOPED BY	REDESIGNED BY	DOC. TYPE	MATERIAL	QUANTITY
		Part	Steel C45	2
Apt	OHO e.V.	LICENCE	SCALE	SHEET
		CC-BY-SA 4.0	1:5	6/19

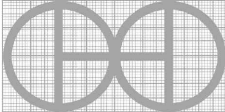


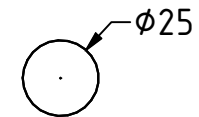
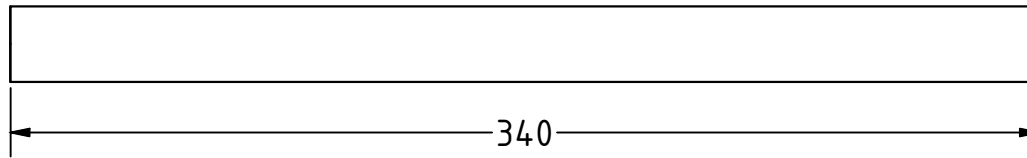
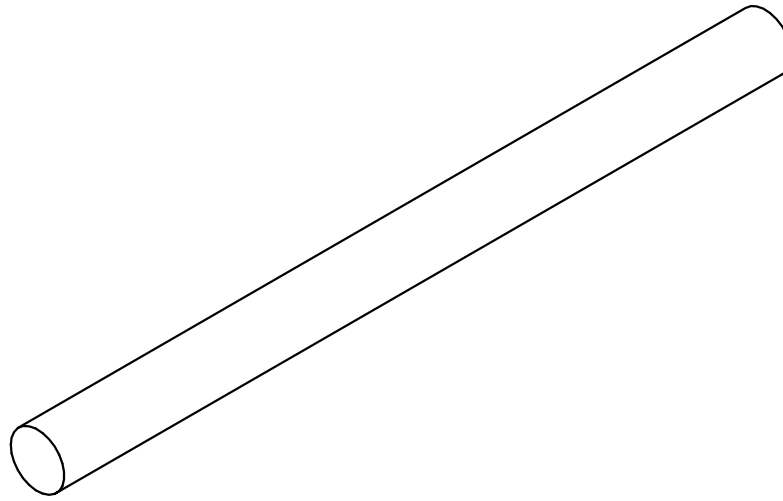
Note: All units in mm.

PROJECT	CREATED BY	APPROVED BY	DATE	VERSION
Groundnut huller	E. Araujo	A. Morillo	06/08/2021	1.0
PART NAME	FILE NAME			POS
Grill bars	oho_gh_groundnut_huller.dwg			3
DEVELOPED BY	REDESIGNED BY	DOC. TYPE	MATERIAL	QUANTITY
Apt	 OHO e.V.	Part	Steel A36	22
		LICENCE	SCALE	SHEET
		CC-BY-SA 4.0	1:2.5	7/19

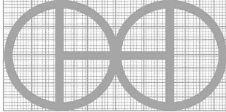


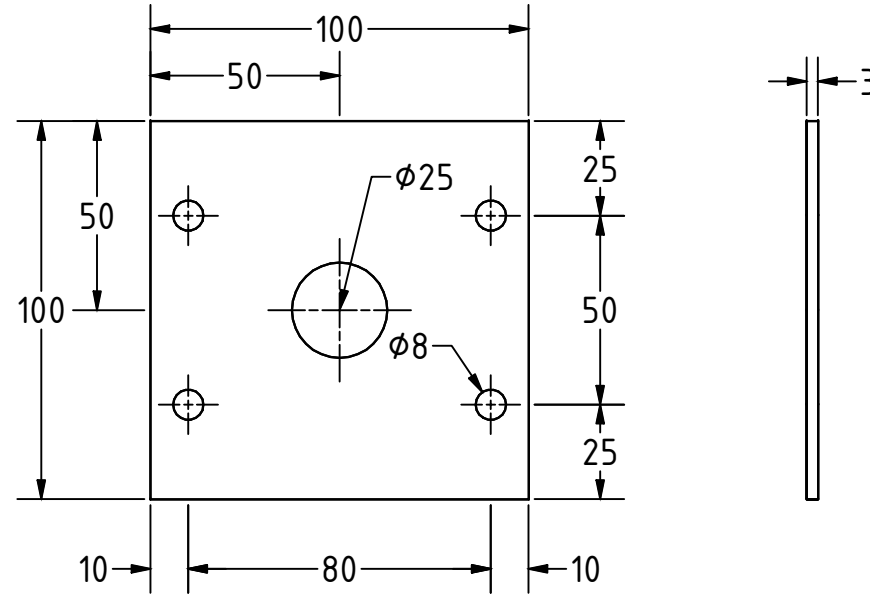
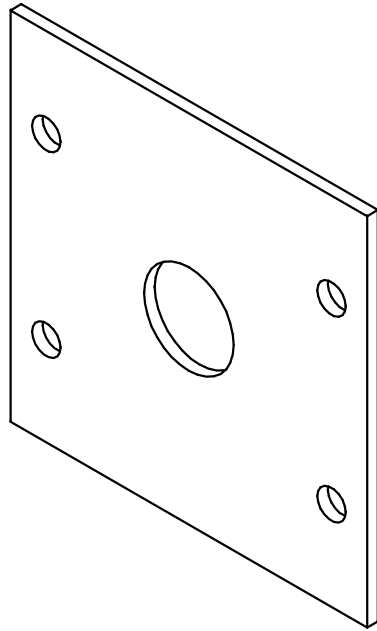
Note: All units in mm.

PROJECT	CREATED BY	APPROVED BY	DATE	VERSION
Groundnut huller	E. Araujo	A. Morillo	06/08/2021	1.0
PART NAME	FILE NAME			POS
Retaining rings	oho_gh_groundnut_huller.dwg			4
DEVELOPED BY	REDESIGNED BY	DOC. TYPE	MATERIAL	QUANTITY
		Part	Steel A36	2
Apt	OHO e.V.	LICENCE	SCALE	SHEET
		CC-BY-SA 4.0	1:5	8/19

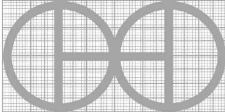


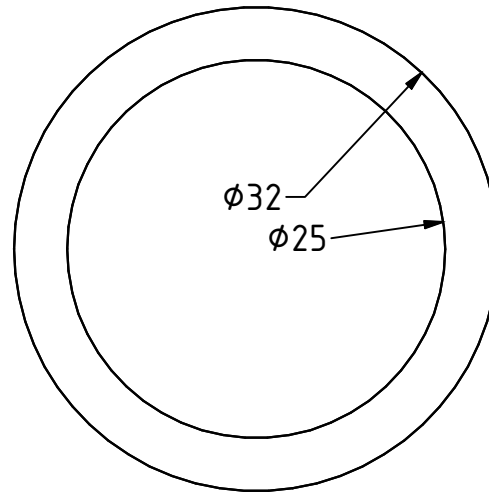
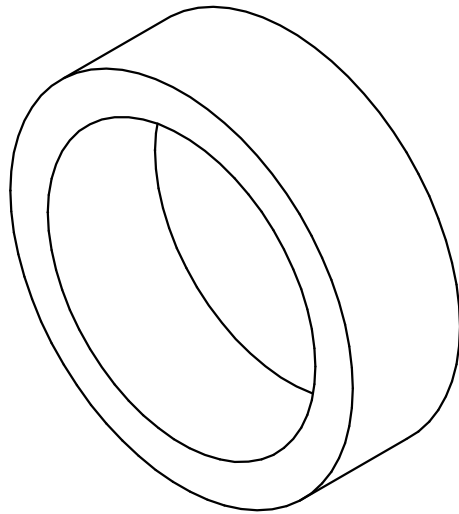
Note: All units in mm.

PROJECT	CREATED BY	APPROVED BY	DATE	VERSION
Groundnut huller	E. Araujo	A. Morillo	06/08/2021	1.0
PART NAME	FILE NAME			POS
Spindle	oho_gh_groundnut_huller.dwg			5
DEVELOPED BY	REDESIGNED BY	DOC. TYPE	MATERIAL	QUANTITY
Apt	 OHO e.V.	Part	Steel A36	1
		LICENCE	SCALE	SHEET
		CC-BY-SA 4.0	1:2.5	9/19

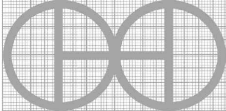


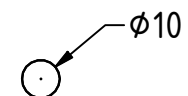
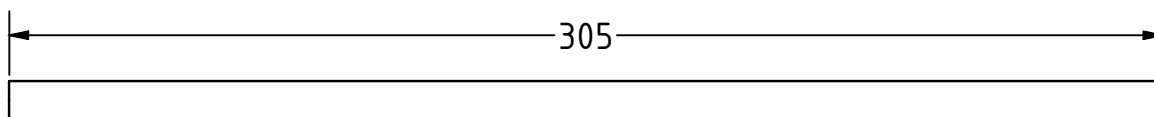
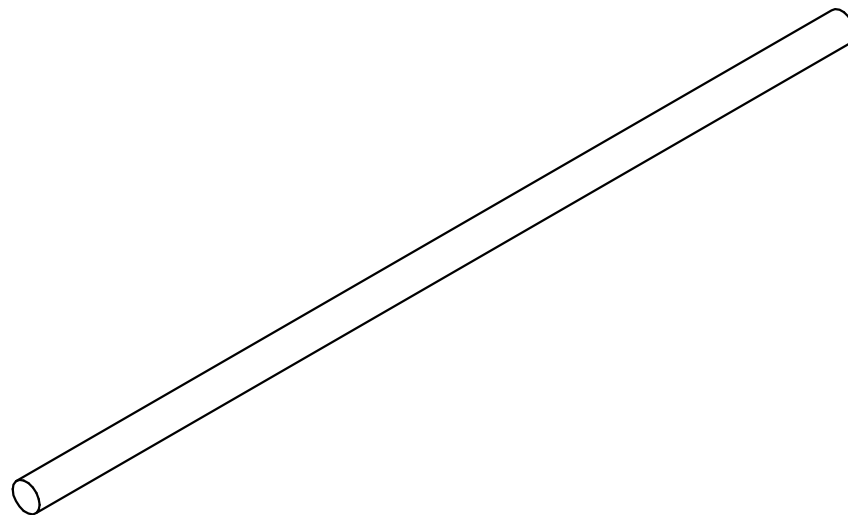
Note: All units in mm.

PROJECT	CREATED BY	APPROVED BY	DATE	VERSION
Groundnut huller	E. Araujo	A. Morillo	06/08/2021	1.0
PART NAME	FILE NAME			POS
Plate	oho_gh_groundnut_huller.dwg			6
DEVELOPED BY	REDESIGNED BY	DOC. TYPE	MATERIAL	QUANTITY
		Part	Steel C45	2
Apt	OHO e.V.	LICENCE	SCALE	SHEET
		CC-BY-SA 4.0	1:2	10/19

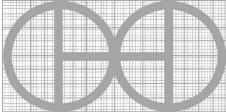


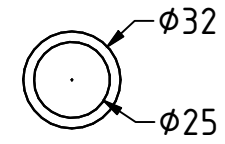
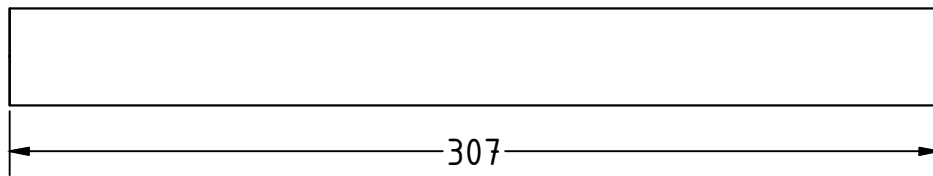
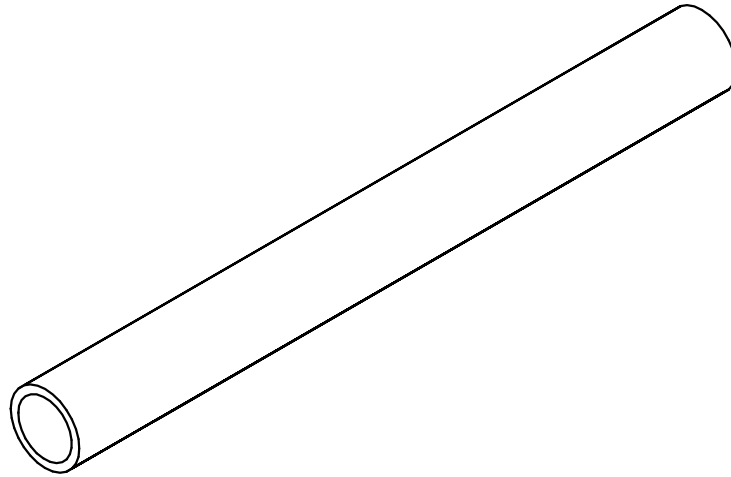
Note: All units in mm.

PROJECT	CREATED BY	APPROVED BY	DATE	VERSION
Groundnut huller	E. Araujo	A. Morillo	06/08/2021	1.0
PART NAME	FILE NAME			POS
Collar	oho_gh_groundnut_huller.dwg			7
DEVELOPED BY	REDESIGNED BY	DOC. TYPE	MATERIAL	QUANTITY
		Part	Steel A36	1
Apt	OHO e.V.	LICENCE	SCALE	SHEET
		CC-BY-SA 4.0	2:1	11/19

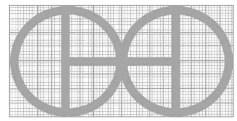


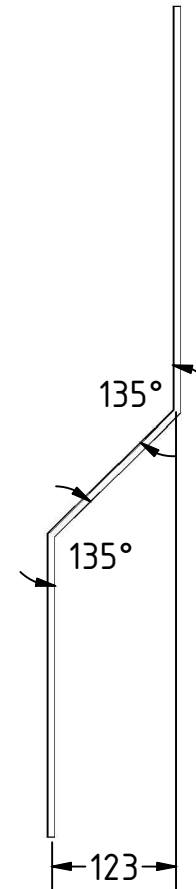
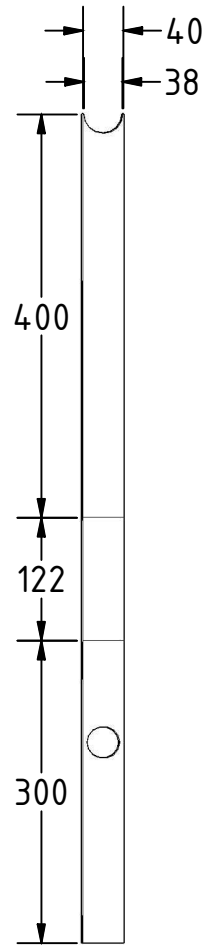
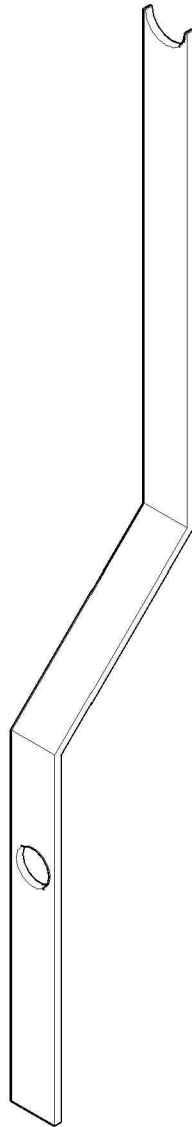
Note: All units in mm.

PROJECT	CREATED BY	APPROVED BY	DATE	VERSION
Groundnut huller	E. Araujo	A. Morillo	06/08/2021	1.0
PART NAME	FILE NAME			POS
Crusher bar	oho_gh_groundnut_huller.dwg			8
DEVELOPED BY	REDESIGNED BY	DOC. TYPE	MATERIAL	QUANTITY
Apt	 OHO e.V.	Part	Steel A36	16
		LICENCE	SCALE	SHEET
		CC-BY-SA 4.0	1:2	12/19

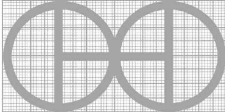


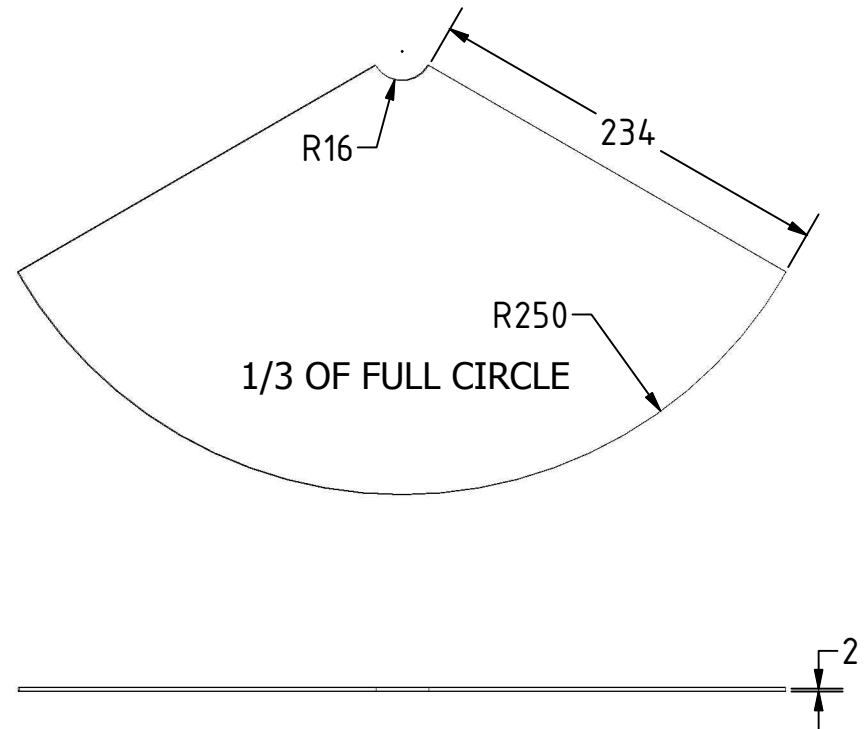
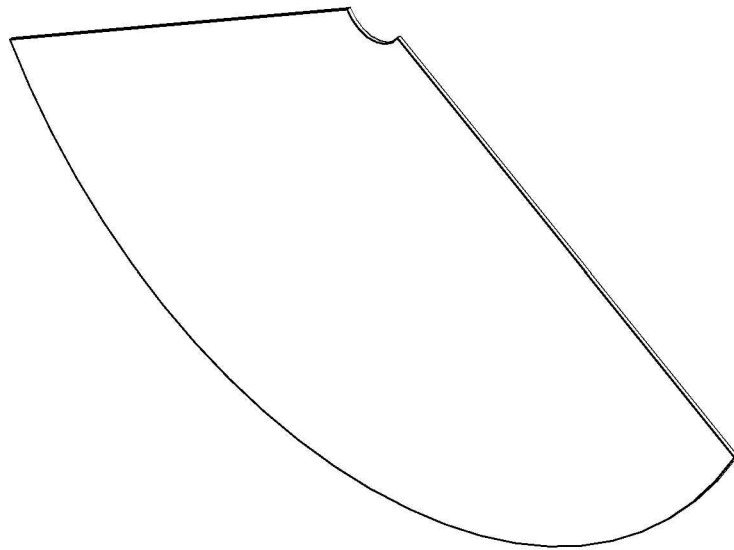
Note: All units in mm.

PROJECT	CREATED BY	APPROVED BY	DATE	VERSION
Groundnut huller	E. Araujo	A. Morillo	06/08/2021	1.0
PART NAME	FILE NAME			POS
Pivot	oho_gh_groundnut_huller.dwg			9
DEVELOPED BY	REDESIGNED BY	DOC. TYPE	MATERIAL	QUANTITY
Apt	 OHO e.V.	Part	Steel A36	1
		LICENCE	SCALE	SHEET
		CC-BY-SA 4.0	1:2.5	13/19

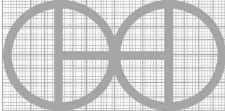


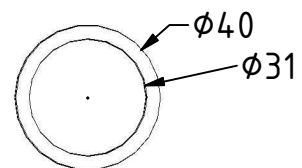
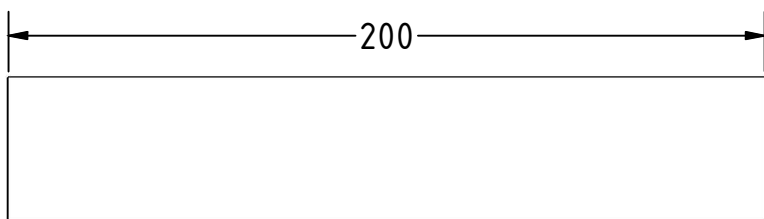
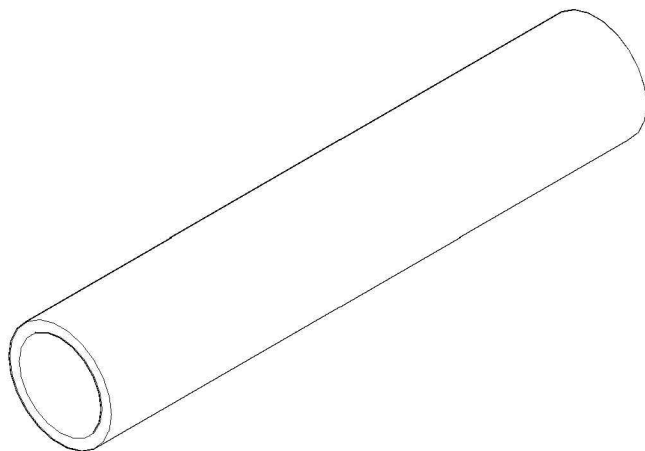
Note: All units in mm.

PROJECT	CREATED BY	APPROVED BY	DATE	VERSION
Groundnut huller	E. Araujo	A. Morillo	06/08/2021	1.0
PART NAME	FILE NAME			POS
Handle	oho_gh_groundnut_huller.dwg			10
DEVELOPED BY	REDESIGNED BY	DOC. TYPE	MATERIAL	QUANTITY
		Part	Steel A36	2
Apt	OHO e.V.	LICENCE	SCALE	SHEET
		CC-BY-SA 4.0	1:7.5	14/19

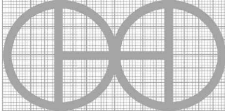


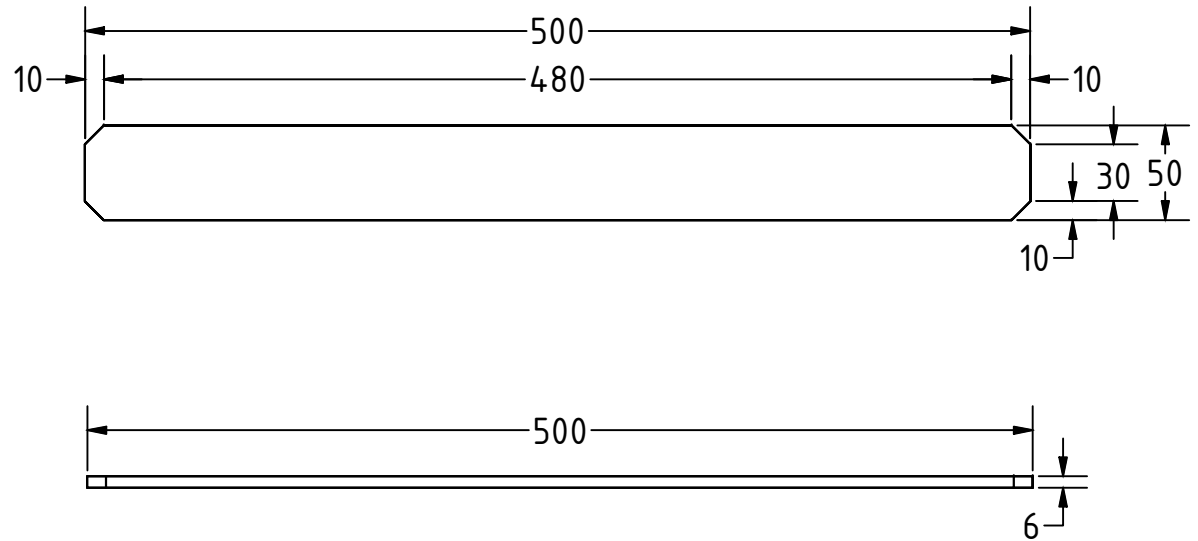
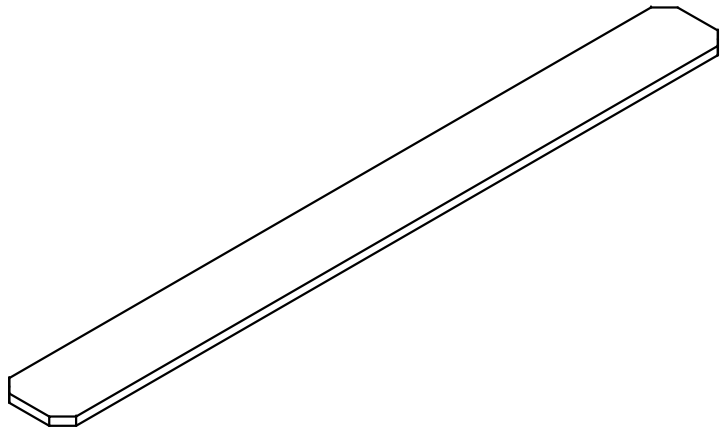
Note: All units in mm.

PROJECT	CREATED BY	APPROVED BY	DATE	VERSION
Groundnut huller	E. Araujo	A. Morillo	06/08/2021	1.0
PART NAME	FILE NAME	POS		
Side plate	oho_gh_groundnut_huller.dwg	11		
DEVELOPED BY	REDESIGNED BY	DOC. TYPE	MATERIAL	QUANTITY
		Part	Steel C45	2
Apt	OHO e.V.	LICENCE	SCALE	SHEET
		CC-BY-SA 4.0	1:4	15/19

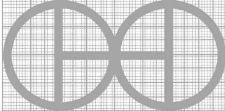


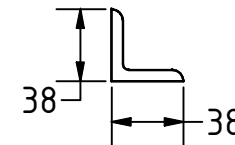
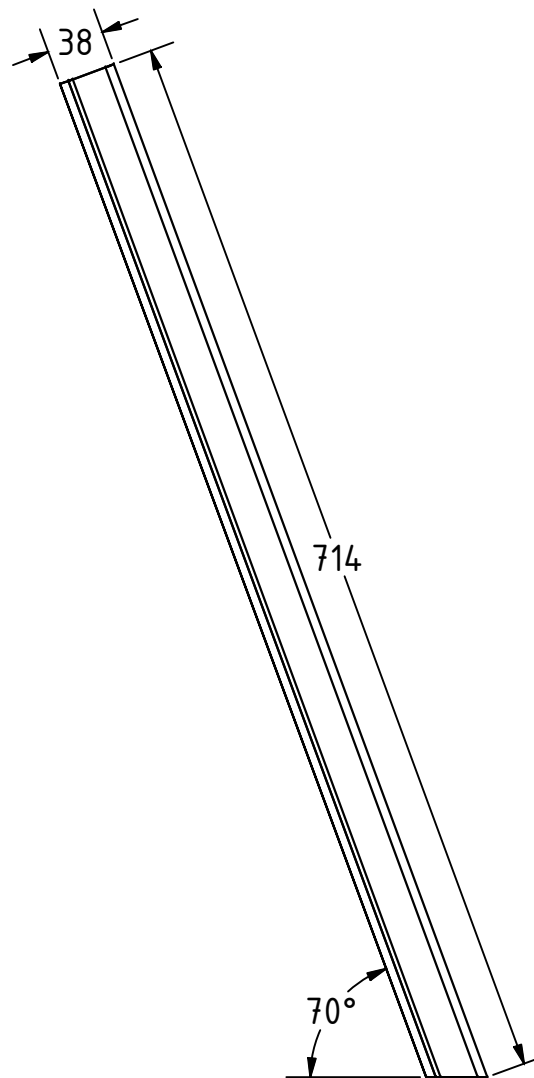
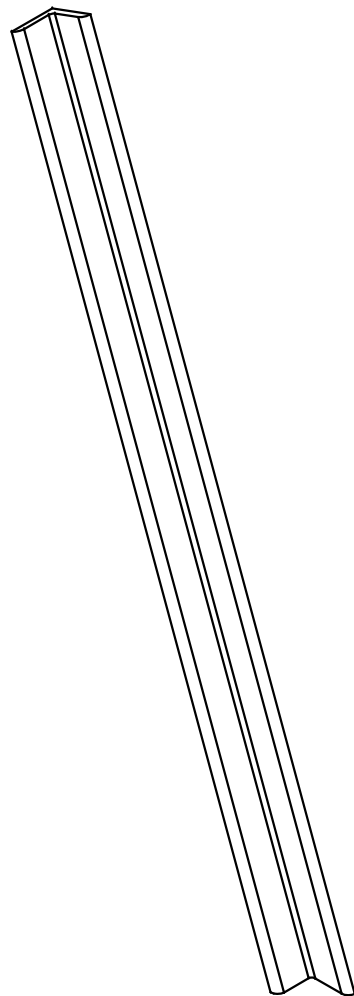
Note: All units in mm.

PROJECT	CREATED BY	APPROVED BY	DATE	VERSION
Groundnut huller	E. Araujo	A. Morillo	06/08/2021	1.0
PART NAME	FILE NAME			POS
Handle t bar	oho_gh_groundnut_huller.dwg			12
DEVELOPED BY	REDESIGNED BY	DOC. TYPE	MATERIAL	QUANTITY
Apt	 OHO e.V.	Part	Steel A36	1
		LICENCE	SCALE	SHEET
		CC-BY-SA 4.0	1:2	16/19

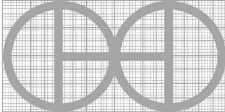


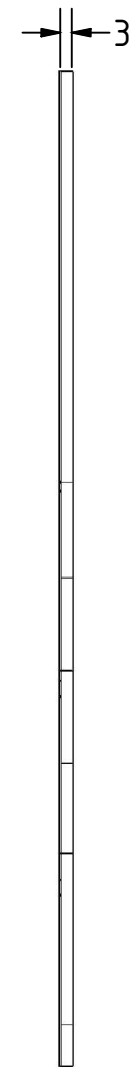
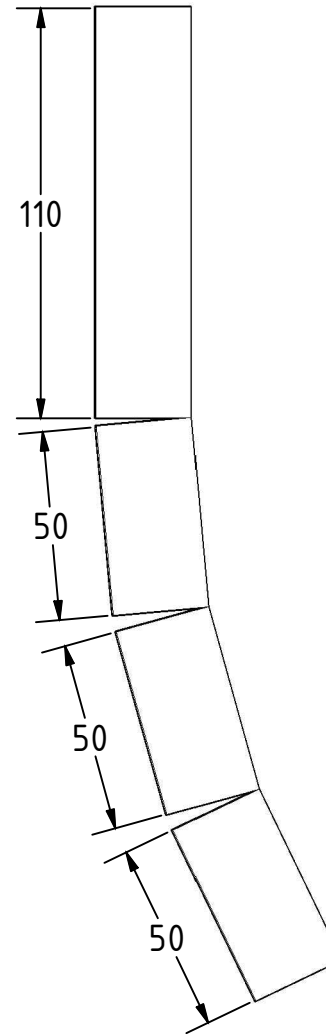
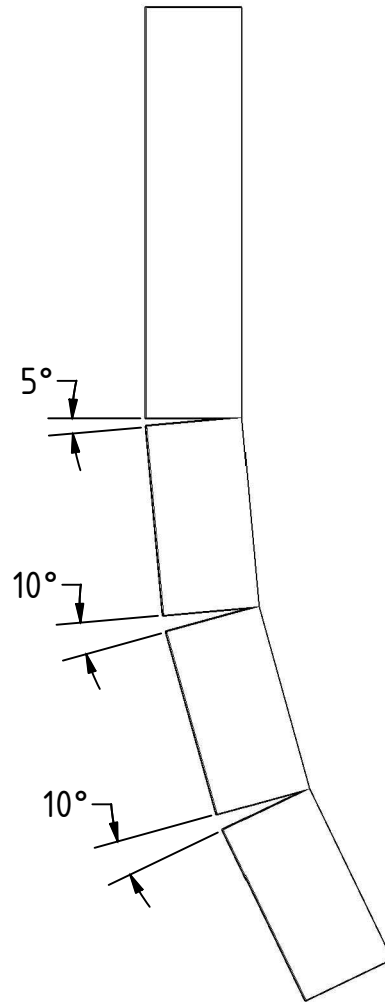
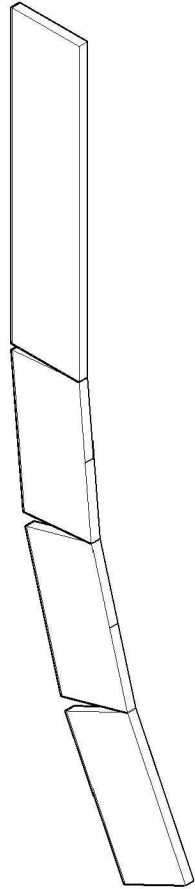
Note: All units in mm.

PROJECT	CREATED BY	APPROVED BY	DATE	VERSION
Groundnut huller	E. Araujo	A. Morillo	06/08/2021	1.0
PART NAME	FILE NAME			POS
Feet	oho_gh_groundnut_huller.dwg			13
DEVELOPED BY	REDESIGNED BY	DOC. TYPE	MATERIAL	QUANTITY
		Part	Steel C45	2
Apt		OHO e.V.	LICENCE	SCALE
		CC-BY-SA 4.0	1:4	17/19

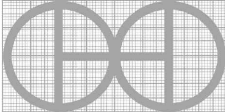


Note: All units in mm.

PROJECT	CREATED BY	APPROVED BY	DATE	VERSION
Groundnut huller	E. Araujo	A. Morillo	06/08/2021	1.0
PART NAME	FILE NAME			POS
Legs	oho_gh_groundnut_huller.dwg			14
DEVELOPED BY	REDESIGNED BY	DOC. TYPE	MATERIAL	QUANTITY
		Part	Steel A36	4
Apt	OHO e.V.	LICENCE	SCALE	SHEET
		CC-BY-SA 4.0	1:5	18/19



Note: All units in mm.

PROJECT	CREATED BY	APPROVED BY	DATE	VERSION
Groundnut huller	E. Araujo	A. Morillo	06/08/2021	1.0
PART NAME	FILE NAME			POS
Folded profile	oho_gh_groundnut_huller.dwg			16
DEVELOPED BY	REDESIGNED BY	DOC. TYPE	MATERIAL	QUANTITY
	 OHO e.V.	Part	Steel C45	4
Apt		LICENCE	SCALE	SHEET
		CC-BY-SA 4.0	1:2	19/19