


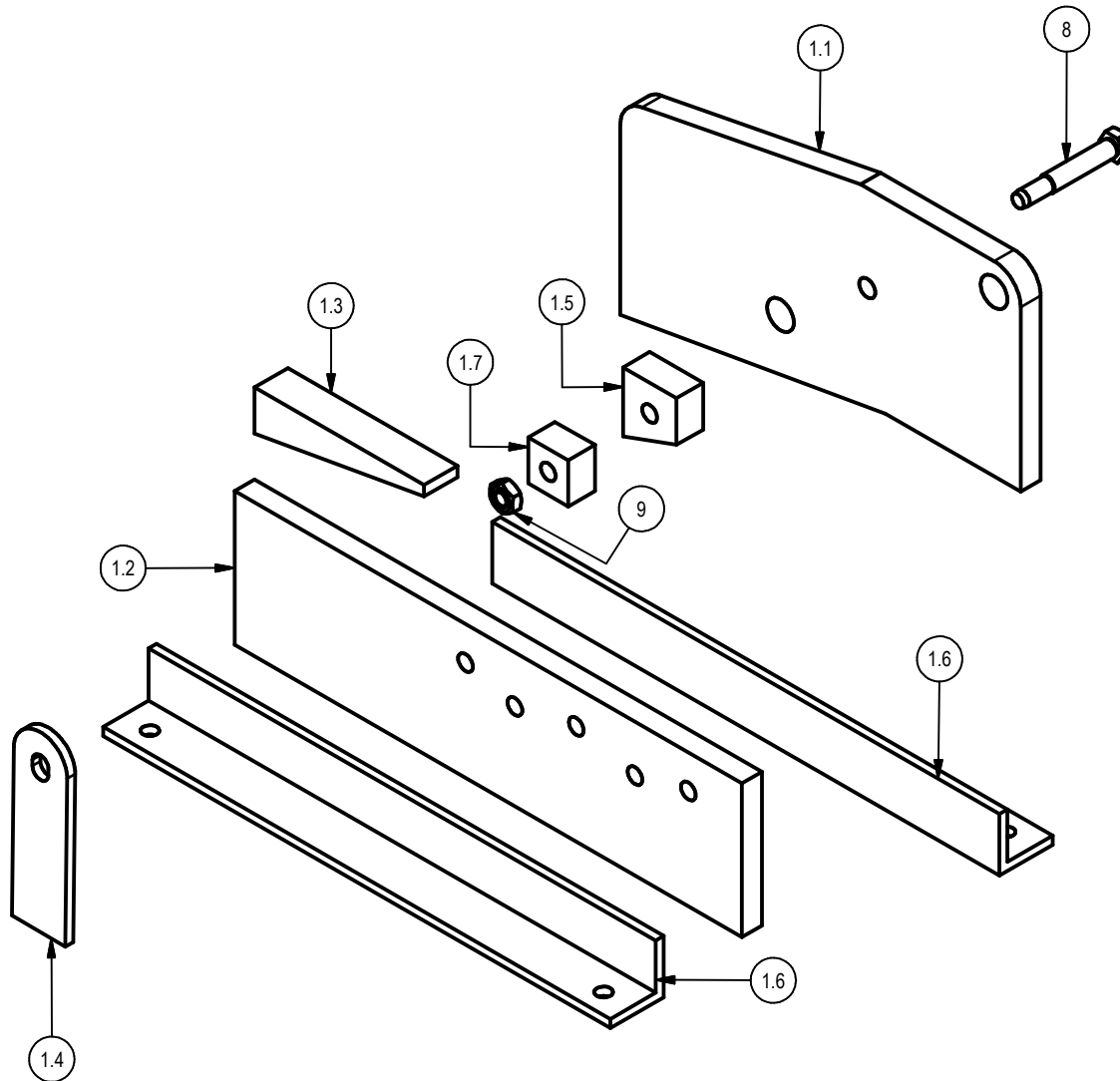




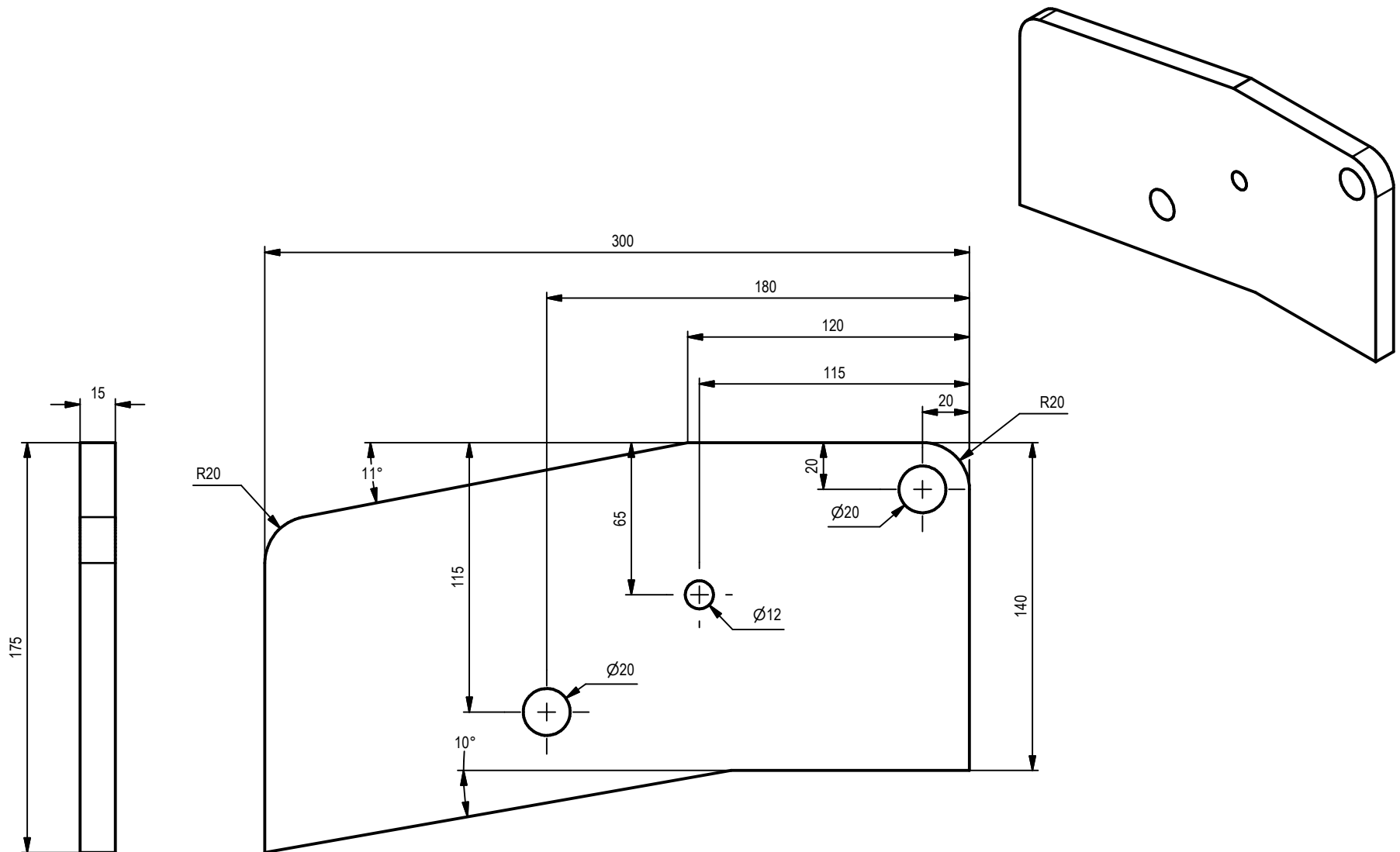
PROJEKT Hebelschere	ERSTELLT VON A. PARDO	GENEHMIGT VON		
TEIL-NAME CUTTING SHEARS	TEIL-CODE A1	DOKUMENTTYP ASSEMBLY	WERKSTOFF STEEL METAL / HARD STEEL	
	LIZENZ	DATEI-NAME CUTTING SHEARS.iam	VERSION 1.0	MENGE 1
		SCALE 1 / 5	SEITE 1/17	DATE 30-09-2020



PARTS LIST						
POS.	POS. OLD	QTY	TEIL NAME	DATEI-NAME	TEIL-TYP	SPEZIFIKATIONEN
A1		1	CUTTING SHEARS	CUTTING SHEARS.iam	ASSEMBLY	
B1		1	PARTS LIST	PARTS LIST	ASSEMBLY	
1		1	BODY	BODY.iam	ASSEMBLY	
1.1	A1	1	UPPER BODY	UPPER BODY.ipt	PART	
1.2	A2	1	LOWER BODY	LOWER BODY.ipt	PART	
1.3	A3	1	SPACING BLOCK	SPACING BLOCK.ipt	PART	
1.4	A9	1	DEPTH STOP	DEPTH STOP.ipt	PART	
1.5	A6	1	STOP SPACER	STOP SPACER.ipt	PART	
1.6	A4	2	MOUNTING ANGLE	MOUNTING ANGLE.ipt	PART	
1.7	A10	1	HARDEND INSERT FOR CROPPING HOLE	HARDEND INSERT FOR CROPPING HOLE.ipt	PART	
2		1	BLADE	BLADE.iam	ASSEMBLY	
2.1	B1	1	UPPER BLADE	UPPER BLADE.ipt	PART	
2.2	B2	1	LOWER BLADE	LOWER BLADE.ipt	PART	
3		1	LEVER	LEVER.iam	ASSEMBLY	
3.1	C1	1	LEVER PLATE	LEVER PLATE.ipt	PART	
3.2	C2	2	CONNECTING LINK	CONNECTING LINK.ipt	PART	
3.3	C3	1	LEVER	LEVER.ipt	PART	
		5	DIN 609 - M10 x 1 x 30-17	DIN 609 - M10 x 30 - 17 1.ipt		
		7	DIN 555-5 - M10	DIN 555-5 - M10.ipt		
		2	DIN 609 - M10 x 1 x 30-16	DIN 609 - M10 x 30 - 16 1.ipt		
		2	DIN 555-5 - M20	DIN 555-5 - M20.ipt		
		2	DIN 609 - M20 x 1,5 x 45-30	DIN 609 - M20 x 45 - 30 1,5.ipt		

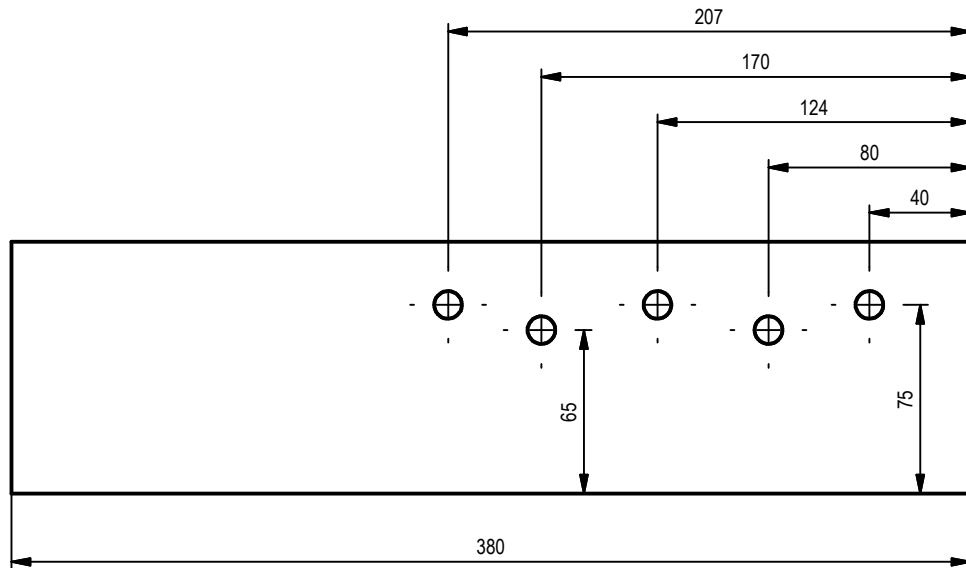
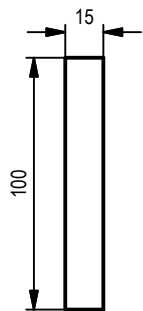
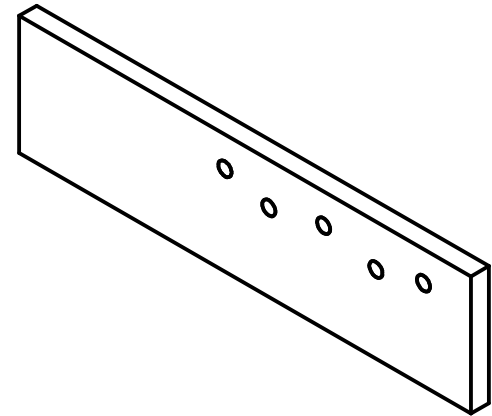
PROJEKT Hebelschere	ERSTELLT VON A. PARDO	GENEHMIGT VON			
TEIL-NAME CUTTING SHEARS	TEIL-CODE B1	DOKUMENTTYP ASSEMBLY	WERKSTOFF STEEL METAL/ HARD STEEL		
	LIZENZ		DATEI-NAME PART LIST CUTTING SHEARS.iam	VERSION 1.0	MENGE 1
			SCALE 0,03 : 1	SEITE 2/17	DATE 30-09-2020




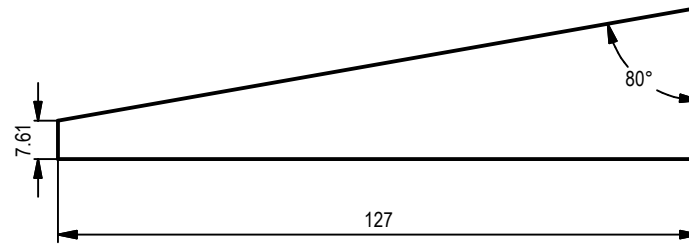
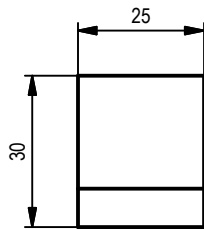
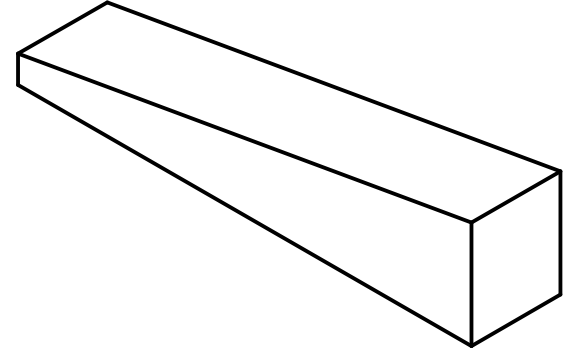
PROJEKT Hebelschere	ERSTELLT VON A. PARDO	GENEHMIGT VON		
TEIL-NAME BODY	TEIL-CODE 1	DOKUMENTTYP ASSEMBLY	WERKSTOFF STEEL METAL	
 OPEN SOURCE ECOLOGY GERMANY	LIZENZ	DATEI-NAME BODY.iam	VERSION 1.0	MENGE 1
		SCALE 1:4	SEITE 3/17	DATE 28-09-2020





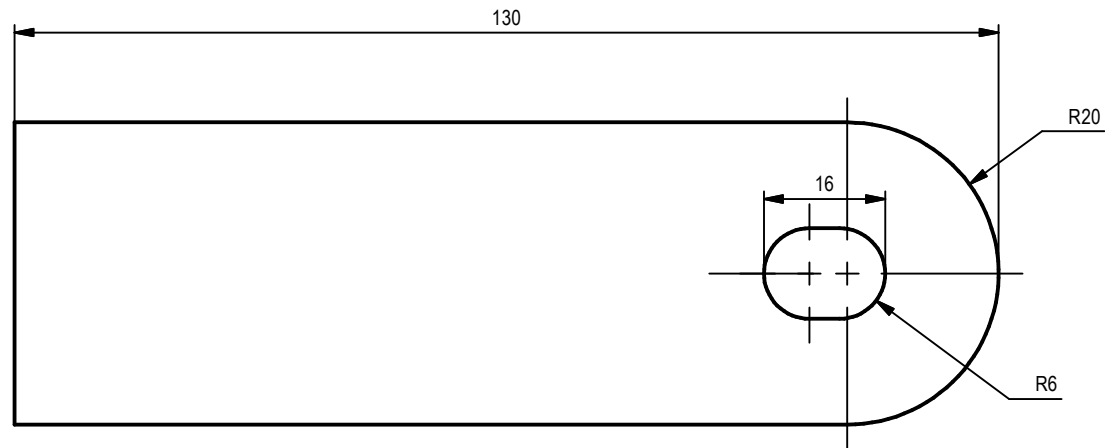
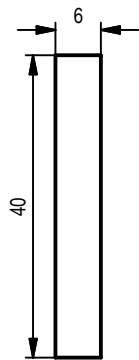
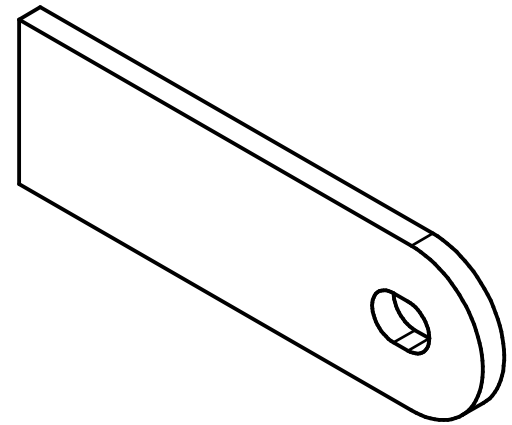
PROJEKT Hebelschere	ERSTELLT VON A. PARDO	GENEHMIGT VON		
TEIL-NAME UPPER BODY	TEIL-CODE 1.1	DOKUMENTTYP PART	WERKSTOFF STEEL METAL	
 <small>OPEN SOURCE ECOLOGY GERMANY</small>	LIZENZ	DATEI-NAME UPPER BODY.ipt	VERSION 1.0	MENGE 1
		SCALE 1 / 2.5	SEITE 4/17	DATE 24-09-2020





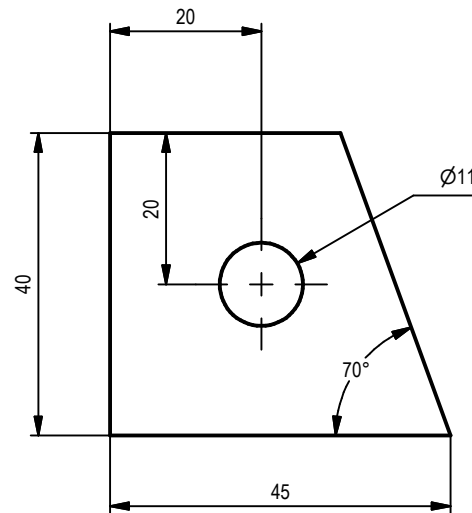
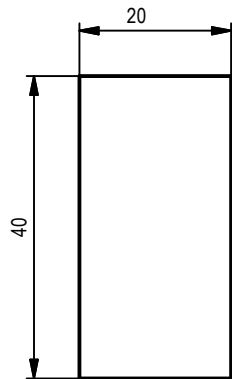
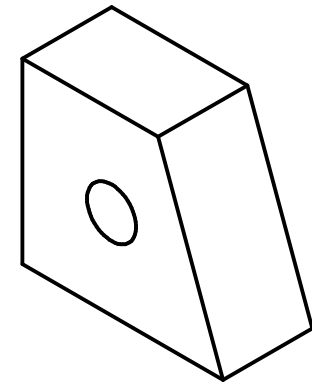
PROJEKT Hebelschere	ERSTELLT VON A. PARDO	GENEHMIGT VON		
TEIL-NAME LOWER BODY	TEIL-CODE 1.2	DOKUMENTTYP PART	WERKSTOFF STEEL METAL	
	LIZENZ	DATEI-NAME LOWER BODY.ipt	VERSION 1.0	MENGE 1
			SCALE 1 / 3	DATE 24-09-2020





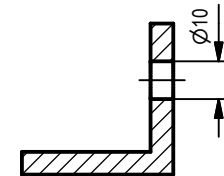
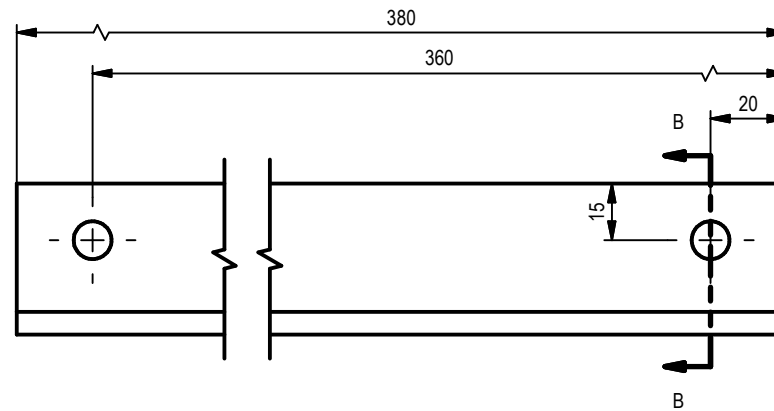
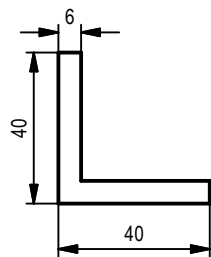
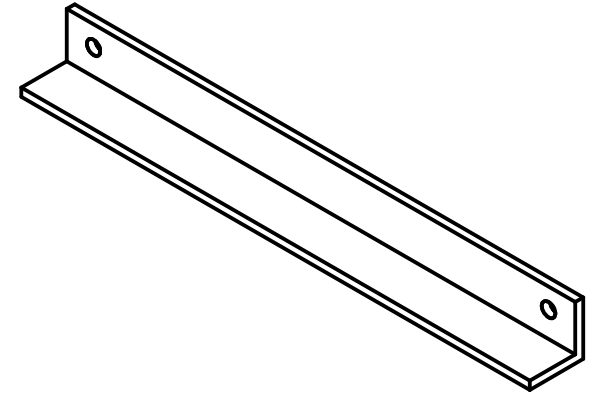
PROJEKT Hebelschere	ERSTELLT VON A. PARDO	GENEHMIGT VON		
TEIL-NAME SPACING BLOCK	TEIL-CODE 1.3	DOKUMENTTYP PART	WERKSTOFF STEEL METAL	
 <small>OPEN SOURCE ECOLOGY GERMANY</small>	LIZENZ	DATEI-NAME SPACING BLOCK.ipt	VERSION 1.0	MENGE 1
		SCALE 1 : 1.5	SEITE 6/17	DATE 24-09-2020





PROJEKT Hebelschere	ERSTELLT VON A. PARDO	GENEHMIGT VON		
TEIL-NAME DEPTH STOP	TEIL-CODE 1.4	DOKUMENTTYP PART	WERKSTOFF STEEL METAL	
	LIZENZ 	DATEI-NAME DEPTH STOP.ipt	VERSION 1.0	MENGE 1
		SCALE 1:1	SEITE 7/17	DATE 24-09-2020

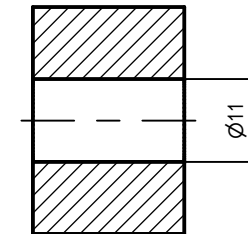
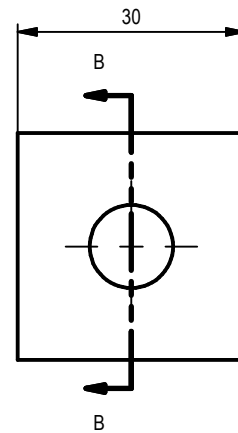
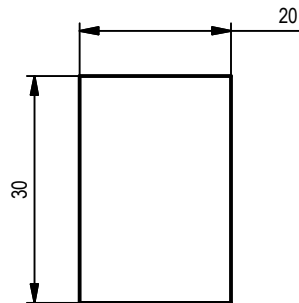
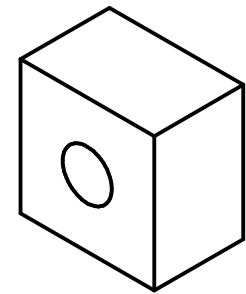


PROJEKT Hebelschere	ERSTELLT VON A. PARDO	GENEHMIGT VON		
TEIL-NAME STOP SPACER	TEIL-CODE 1.5	DOKUMENTTYP PART	WERKSTOFF STEEL METAL	
 <small>OPEN SOURCE ECOLOGY GERMANY</small>	LIZENZ	DATEI-NAME STOP SPACER.ipt	VERSION 1.0	MENGE 1
		SCALE 1:1	SEITE 8/17	DATE 24-09-2020





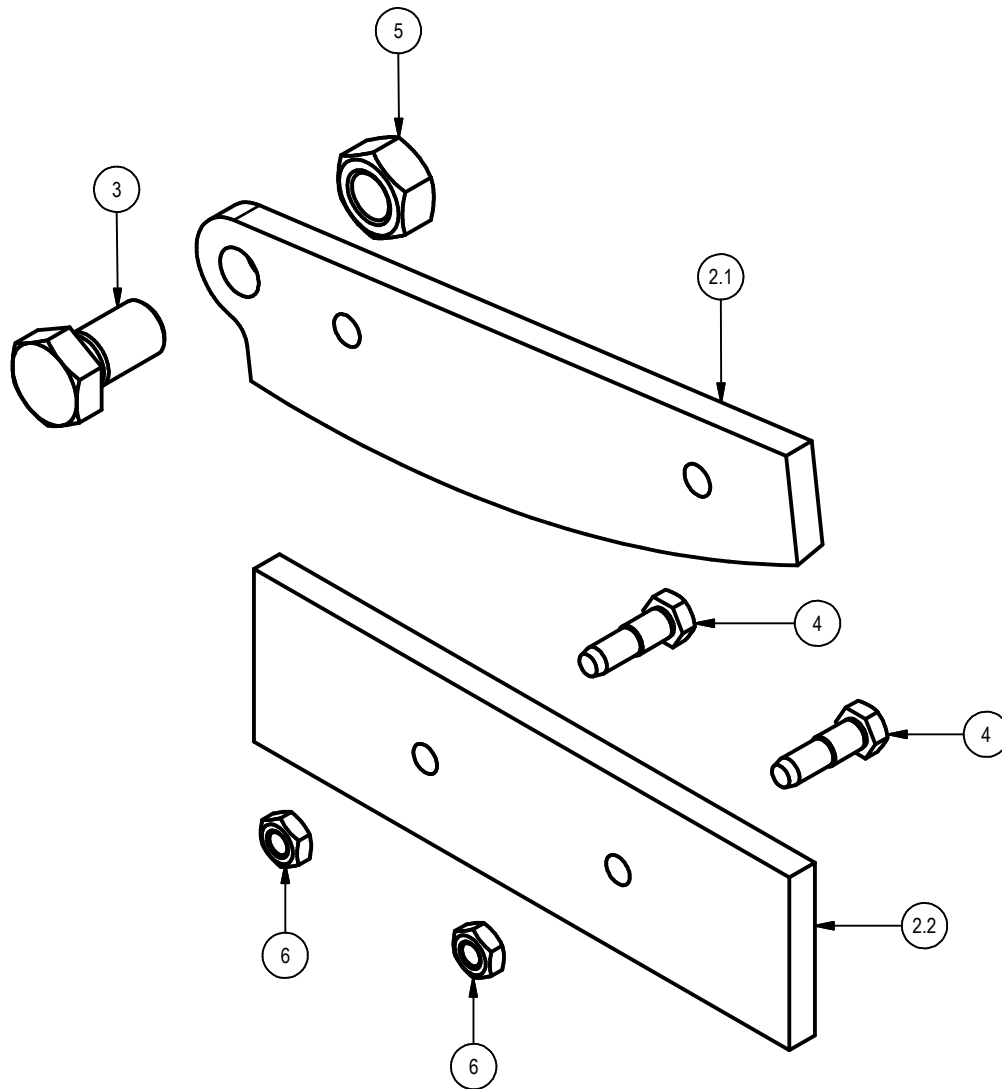
SECTION B-B
SCALE 1 / 2


PROJEKT Hebelschere	ERSTELLT VON A. PARDO	GENEHMIGT VON		
TEIL-NAME MOUNTING ANGLE	TEIL-CODE 1.6	DOKUMENTTYP PART	WERKSTOFF STEEL METAL	
 OPEN SOURCE ECOLOGY GERMANY	LIZENZ 	DATEI-NAME MOUNTING ANGLE.ipt	VERSION 1.0	MENGE 1
		SCALE 1 / 2	SEITE 9/17	DATE 24-09-2020

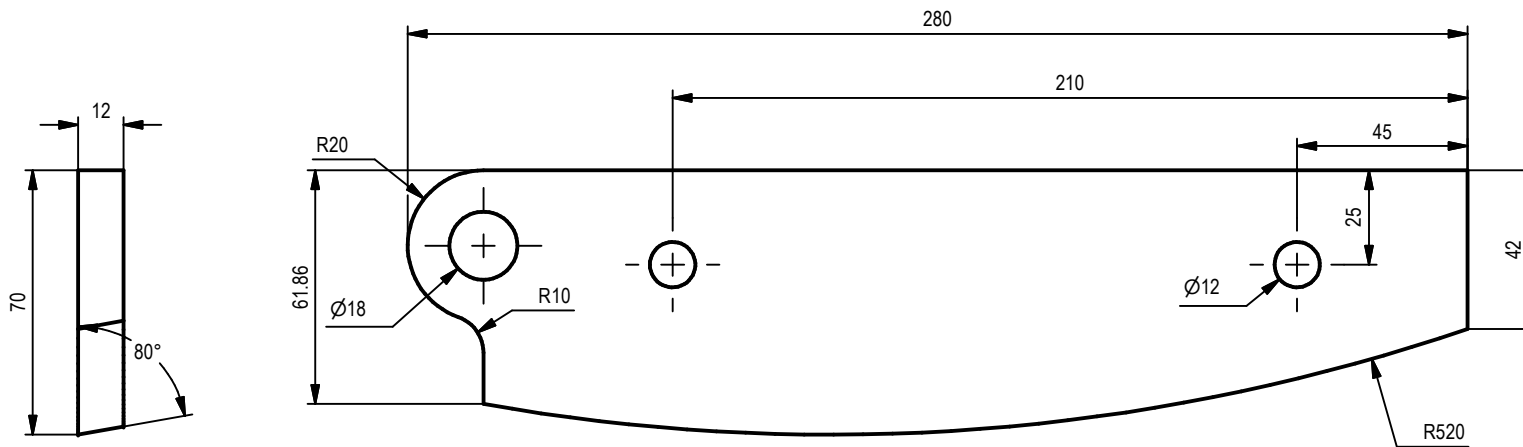
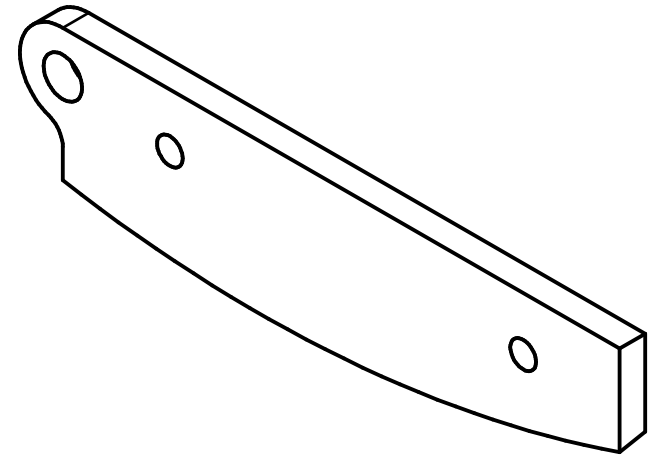



SECTION B-B
SCALE 1 : 1

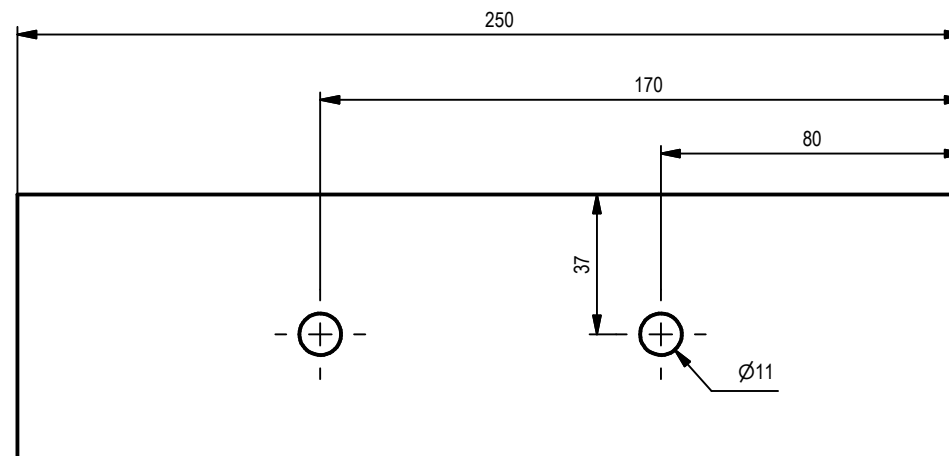
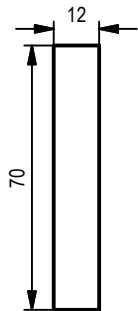
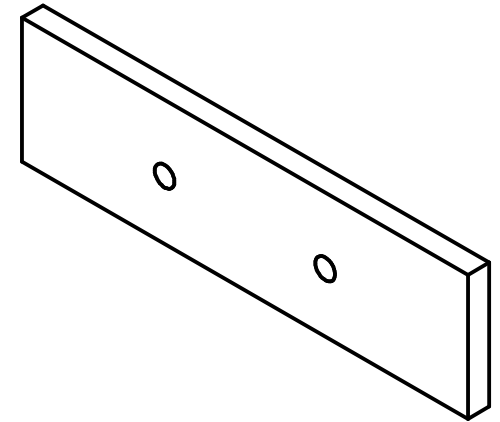
PROJEKT Hebelschere	ERSTELLT VON A. PARDO	GENEHMIGT VON		
TEIL-NAME HARDEND INSERT FOR CROPPING HOLE	TEIL-CODE 1.7	DOKUMENTTYP PART	WERKSTOFF STEEL METAL	
 <small>OPEN SOURCE ECOLOGY GERMANY</small>	LIZENZ 	DATEI-NAME HARDEND INSERT FOR CROPPING HOLE.ipt	VERSION 10/17	MENGE 1
		SCALE 1 : 1	SEITE 10/17	DATE 24-09-2020





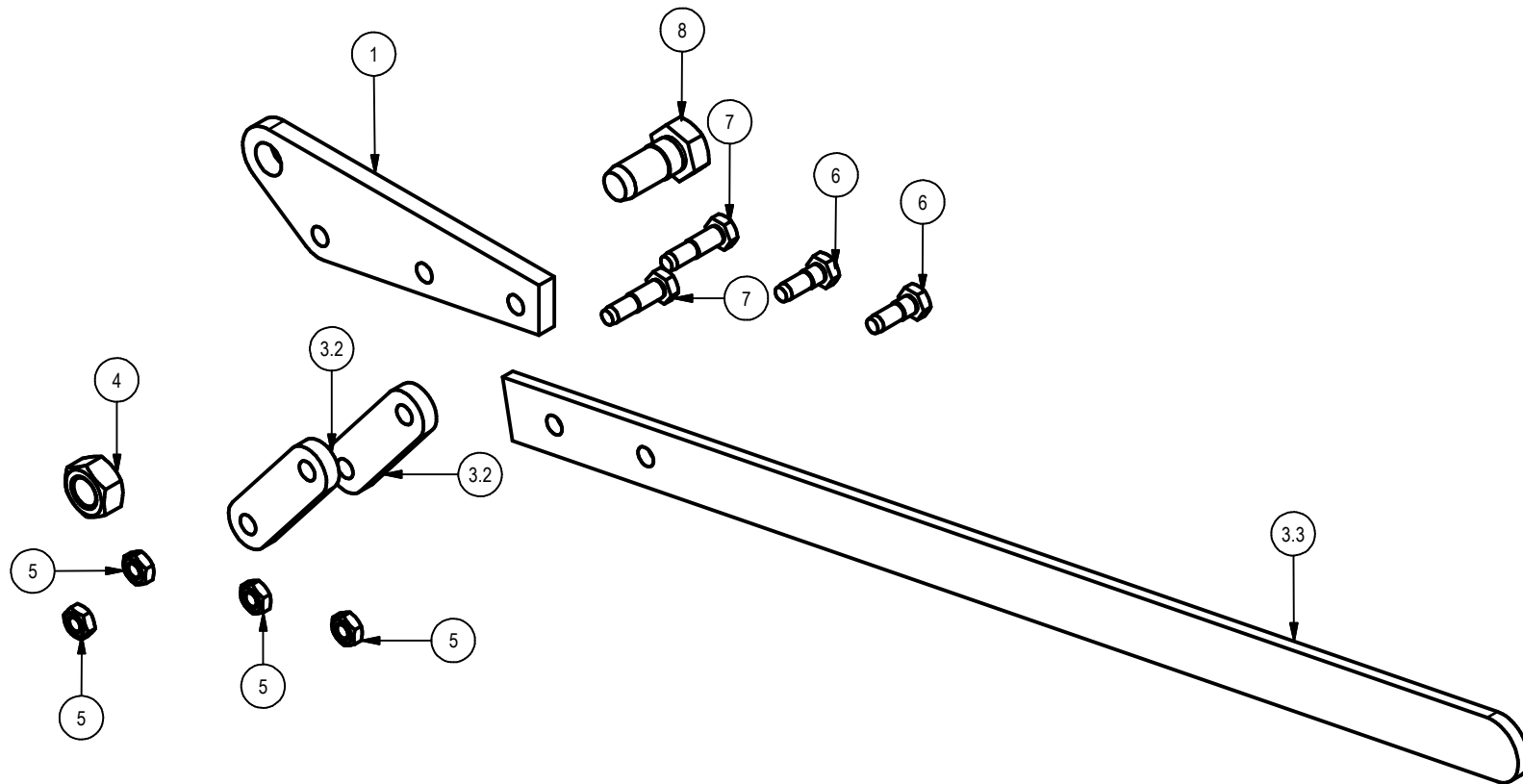
PROJEKT Hebelschere	ERSTELLT VON A. PARDO	GENEHMIGT VON		
TEIL-NAME BLADE	TEIL-CODE 2	DOKUMENTTYP ASSEMBLY	WERKSTOFF HARD STEEL	
 OPEN SOURCE ECOLOGY GERMANY	LIZENZ	DATEI-NAME BLADE.iam	VERSION 1.0	MENGE 1
			SCALE 1 / 2.5	DATE 24-09-2020





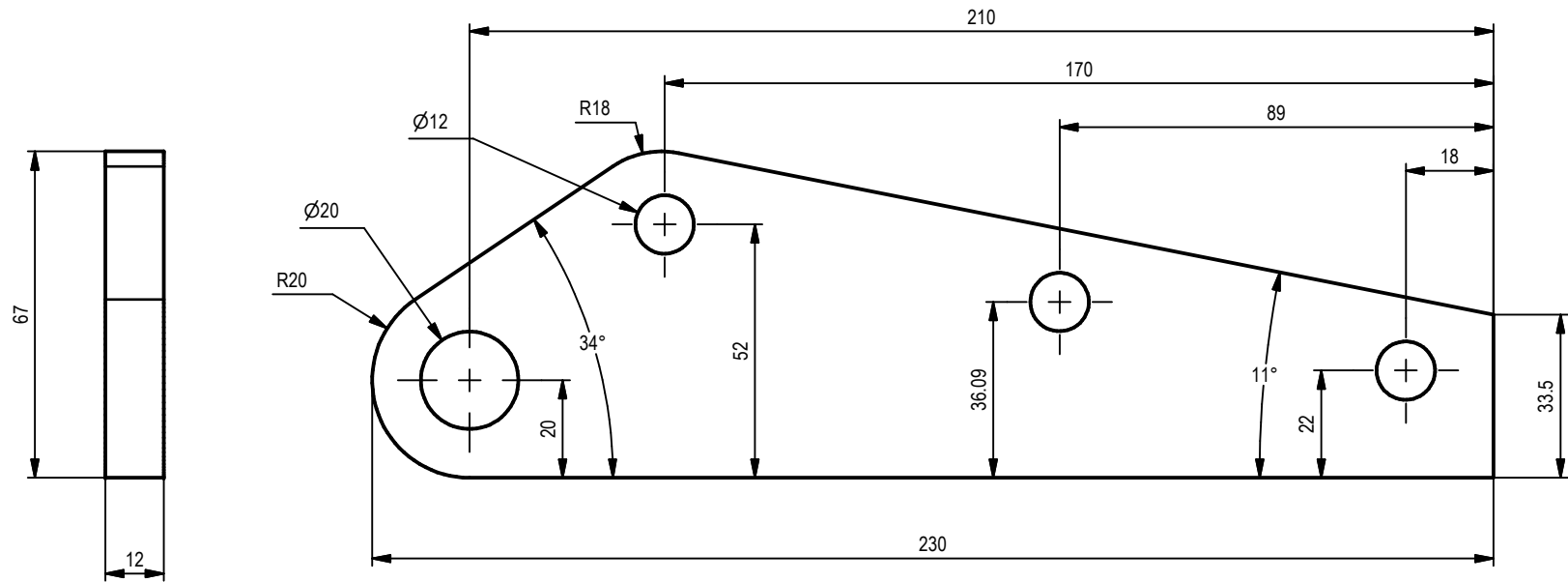
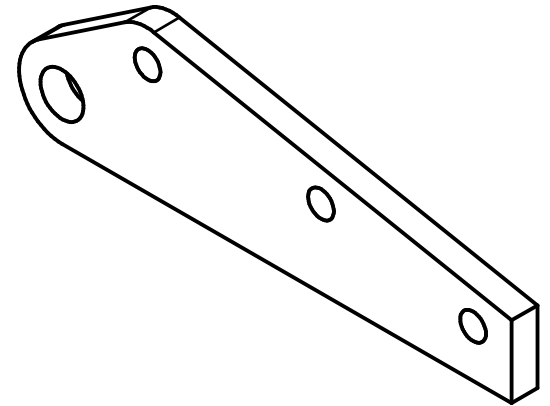
PROJEKT Hebelschere	ERSTELLT VON A. PARDO	GENEHMIGT VON		
TEIL-NAME UPPER BLADE	TEIL-CODE 2.1	DOKUMENTTYP PART	WERKSTOFF HARD STEEL	
 <small>OPEN SOURCE ECOLOGY GERMANY</small>	LIZENZ	DATEI-NAME UPPER BLADE.ipt	VERSION 1.0	MENGE 1
		SCALE 1 / 2	SEITE 12/17	DATE 24-09-2020





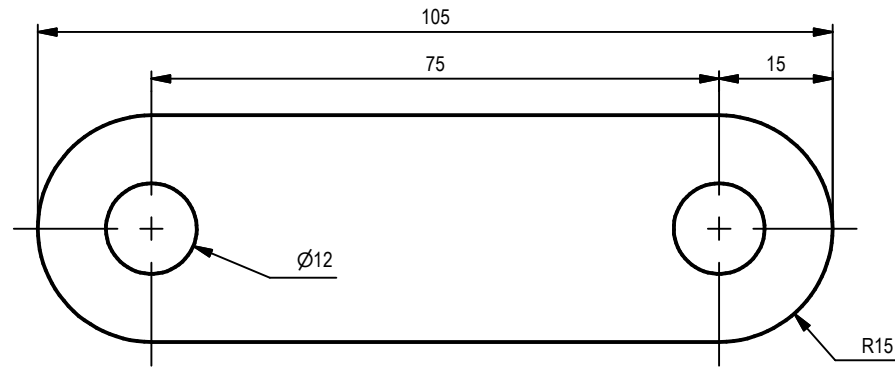
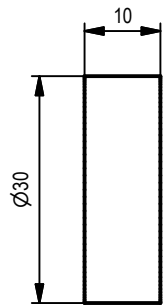
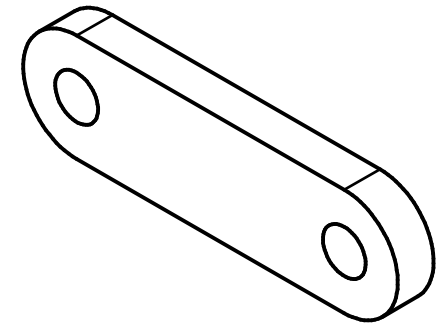
PROJEKT Hebelschere	ERSTELLT VON A. PARDO	GENEHMIGT VON		
TEIL-NAME LOWER BLADE	TEIL-CODE 2.2	DOKUMENTTYP PART	WERKSTOFF HARD STEEL	
 <small>OPEN SOURCE ECOLOGY GERMANY</small>	LIZENZ	DATEI-NAME LOWER BLADE.ipt	VERSION 1.0	MENGE 1
		SCALE 1 / 2	SEITE 13/17	DATE 24-09-2020





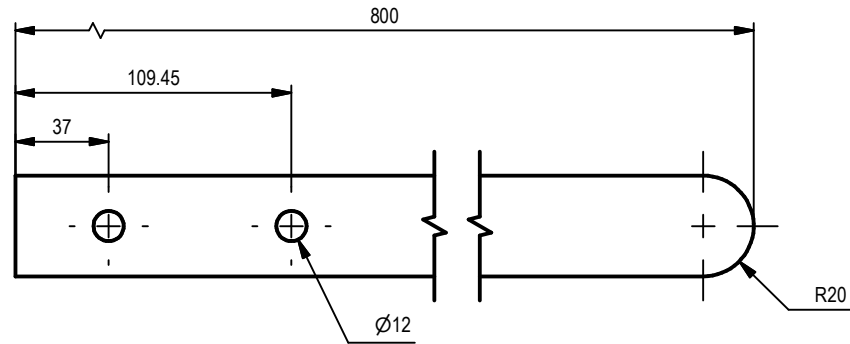
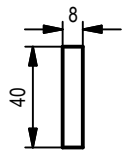
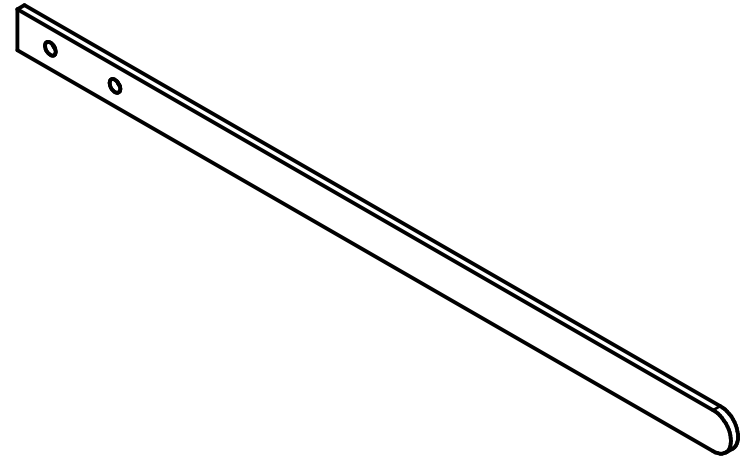
PROJEKT Hebelschere	ERSTELLT VON A. PARDO	GENEHMIGT VON		
TEIL-NAME LEVER	TEIL-CODE 3	DOKUMENTTYP ASSEMBLY	WERKSTOFF STEEL METAL	
 OPEN SOURCE ECOLOGY GERMANY	LIZENZ	DATEI-NAME LEVER.iam	VERSION 1.0	MENGE 1
		SCALE 1:4	SEITE 14/17	DATE 28-09-2020





PROJEKT Hebelschere	ERSTELLT VON A. PARDO	GENEHMIGT VON		
TEIL-NAME LEVER PLATE	TEIL-CODE 3.1	DOKUMENTTYP PART	WERKSTOFF STEEL METAL	
 OPEN SOURCE ECOLOGY GERMANY	LIZENZ 	DATEI-NAME LEVER PLATE.ipt	VERSION 1.0	MENGE 1
		SCALE 1 / 1.5	SEITE 15/17	DATE 24-09-2020



PROJEKT Hebelschere	ERSTELLT VON A. PARDO	GENEHMIGT VON		
TEIL-NAME CONNECTING LINK	TEIL-CODE 3.2	DOKUMENTTYP PART	WERKSTOFF STEEL METAL	
 <small>OPEN SOURCE ECOLOGY GERMANY</small>	LIZENZ 	DATEI-NAME CONNECTING LINK.ipt	VERSION 1.0	MENGE 1
		SCALE 1 : 1	SEITE 16/17	DATE 24-09-2020



PROJEKT Hebelschere	ERSTELLT VON A. PARDO	GENEHMIGT VON		
TEIL-NAME LEVER	TEIL-CODE 3.3	DOKUMENTTYP PART	WERKSTOFF STEEL METAL	
	LIZENZ	DATEI-NAME LEVER.ipt	VERSION 1.0	MENGE 1
		SCALE 1 / 3	SEITE 17/17	DATE 24-09-2020