
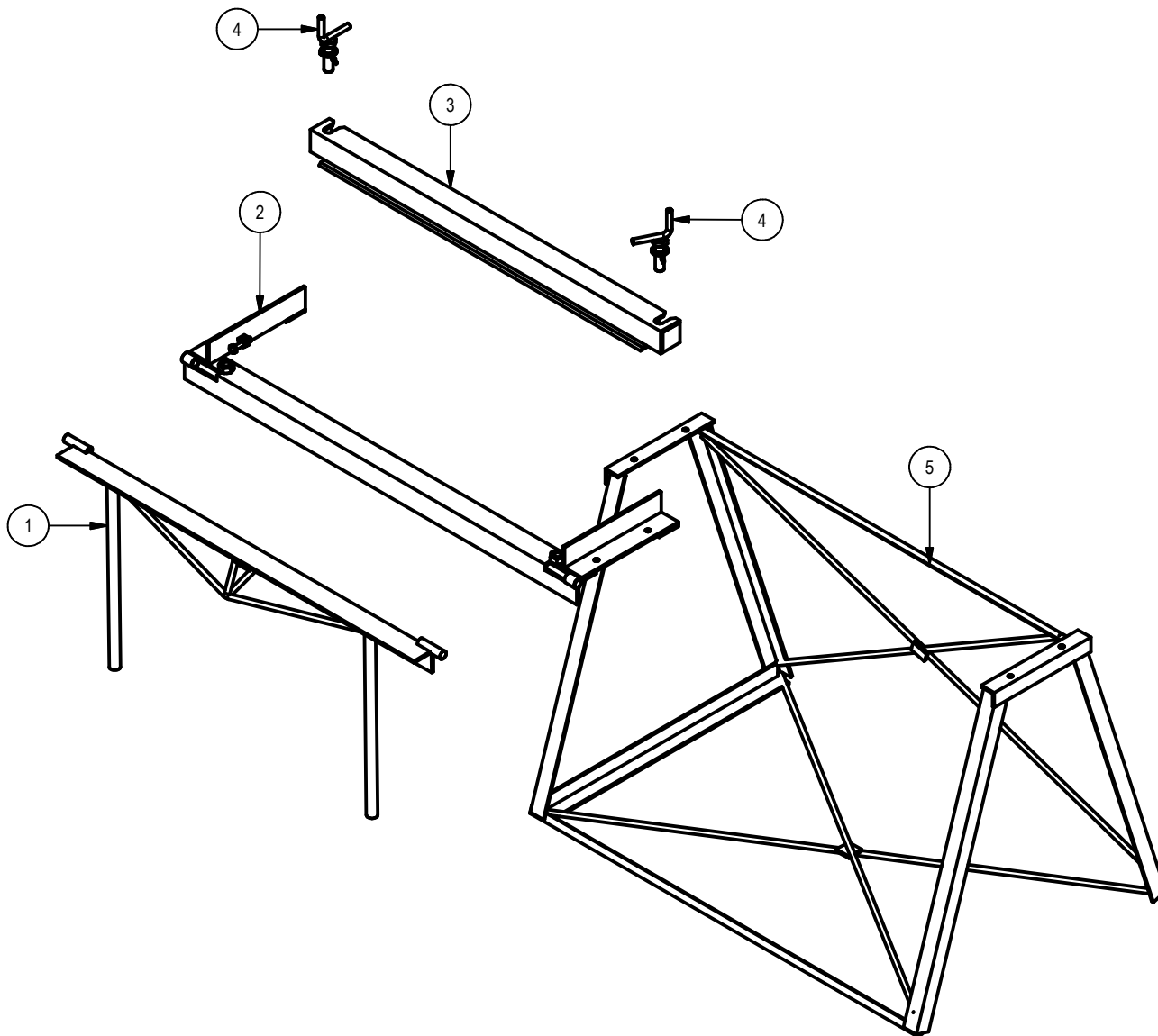



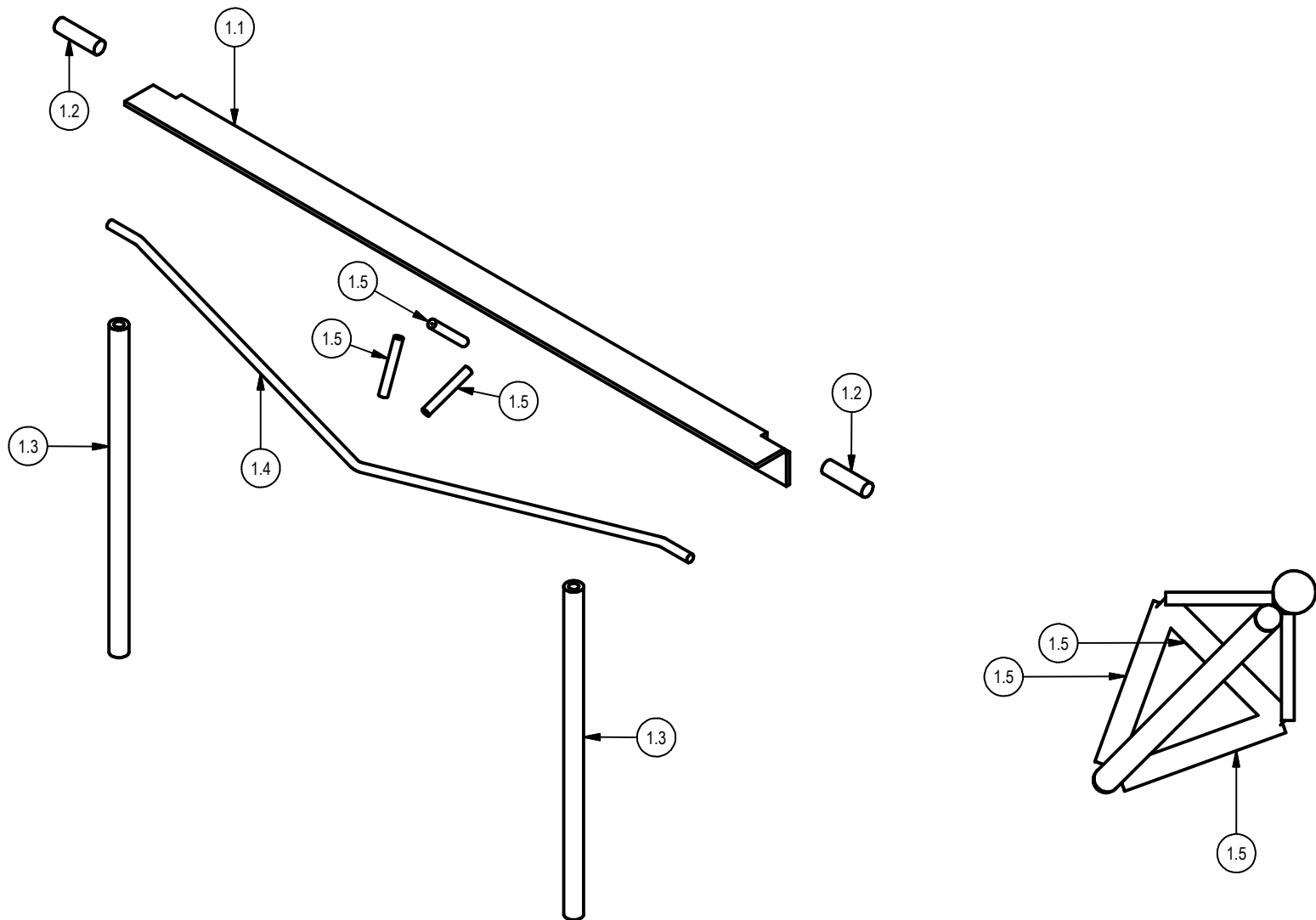
PROJEKT <b>Metall-Abkantmaschine</b>	ERSTELLT VON A. PARDO	GENEHMIGT VON D. Jaeger		
TEIL-NAME Metal Folding Machine	TEIL-CODE A1	DOKUMENTTYP ASSEMBY	WERKSTOFF	
 <small>OPEN SOURCE ECOLOGY GERMANY</small> Open Source Ecology e.V. Knobelsdorffstr. 22 14059 Berlin <a href="http://www.ose-germany.de">www.ose-germany.de</a> +49 (0) 30 / 92282426	LIZENZ <b>CERN-OHL</b>	DATEI-NAME Metal Folding Machine.iam	VERSION 1.0	MENGE
		SCALE 1 / 10	SEITE 1	DATE 15-11-2020




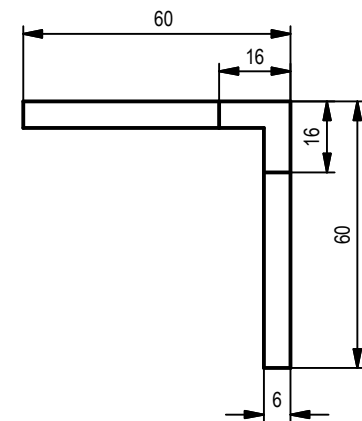
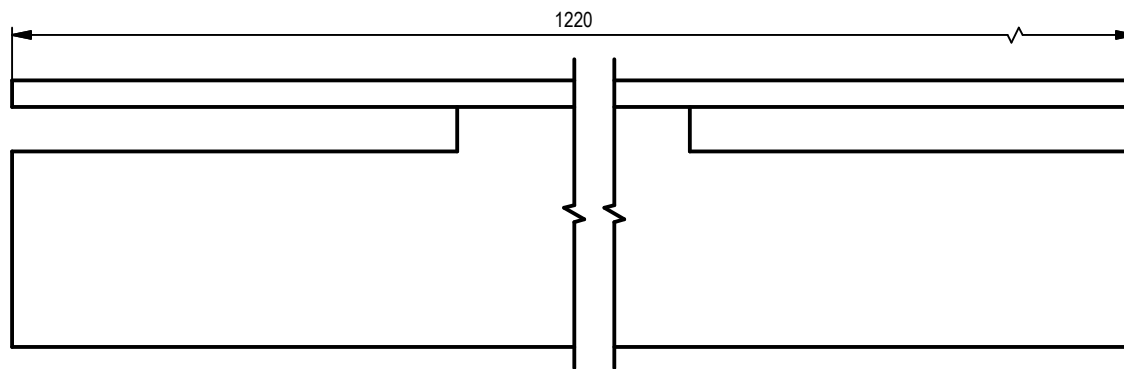
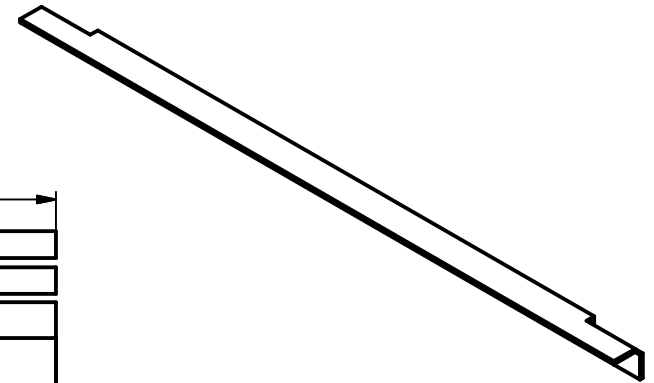
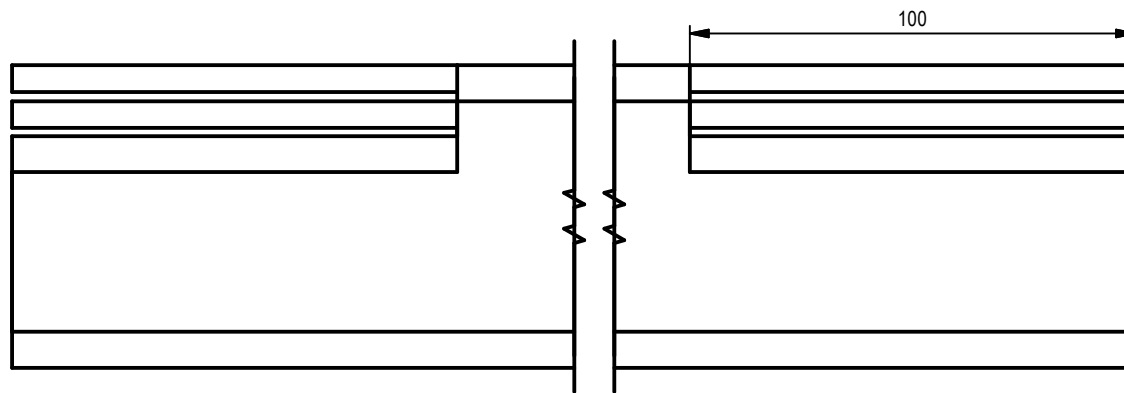
PROJEKT <b>Metall-Abkantmaschine</b>		ERSTELLT VON A. PARDO		GENEHMIGT VON D. Jaeger	
TEIL-NAME Metal Folding Machine		TEIL-CODE A1		DOKUMENTTYP ASSEMBY	
 Open Source Ecology e.V. Knobelsdorffstr. 22 14059 Berlin <a href="http://www.ose-germany.de">www.ose-germany.de</a> +49 (0) 30 / 92282426		LIZENZ <b>CERN-OHL</b>		DATEI-NAME Metal Folding Machine.iam	
		VERSION 1.0		MENGE 	
		SCALE 1 / 15		SEITE 2	
				DATE 15-11-2020	


PARTS LIST							
POS.	POS. OLD	QTY	TEIL NAME	DATEI-NAME	TEIL-TYP	SPEZIFIKATIONEN	SEITE
A1		1	METAL FOLDING MACHINE	METAL FOLDING MACHINE.iam	Production	Steel ASTM A36, steel S235JR	1
A1		1	METAL FOLDING MACHINE	METAL FOLDING MACHINE.iam	Production	Steel ASTM A36, steel S235JR	2
B1		1	PART LIST	PARTS LIST METAL FOLDING MACHINE.iam	Production	Steel ASTM A36, steel S235JR	3
1.0		1	SUB-METAL FOLDING MACHINE 1	Assembly1-metal folding.iam	Production	Steel ASTM A36, steel S235JR	4
1.1	5	1	FOLDING BEAM	FOLDING BEAM.ipt	Production	FIXED BEAM	5
1.2	6	2	PIVOT BAR	PIVOT BAR.ipt	Production	PIVOT BAR	6
1.3	6/21	2	handle	HANDLE.ipt	PART	HANDLE	7
1.4	8	1	BEAM TIE	BEAM TIE.ipt	Production	BEAM TIE	8
1.5	9	3	BEAM STRUT	BEAM STRUT.ipt	Production	BEAM STRUT	9
2		1	SUB-METAL FOLDING MACHINE 2	Assembly2-metal folding.iam	Production	Steel ASTM A36, steel S235JR	10
2.1	11	1	FIXED BEAM	FIXED BEAM.ipt	Production	FIXED BEAM	11
2.2	12	2	FRAME SLIDE	FRAME SLIDE.ipt	Production	FRAME SLIDE	12
2.3	13	1	FRAME SPACER	FRAME SPACER.ipt	Production	FRAME SPACER	13
2.4	14	1	CLAMP SPACER	CLAMP SPACER.ipt	Production	CLAMP SPACER	14
2.5	15	1	PIVOT TUBE	PIVOT TUBE.ipt	Production	CLAMP TUBE	15
2.6		6	ANSI B18.2.4.5M - M10 x 1.5	ANSI B18.2.4.5M - M10 x 1.5 - 16.ipt	Standard	HEX JAM NUT	
3		1	SUB-METAL FOLDING MACHINE 3	Assembly3-metal folding.iam	Production	Steel ASTM A36, steel S235JR	16
3.1	17	1	CLAMP TOP	CLAMP TOP.ipt	Production	CLAMP TOP	17
3.2	18	1	CLAMP BOTTOM	CLAMP BOTTOM.ipt	Production	CLAMP BOTTOM	18
3.3	19	1	CLAMP WEB	CLAMP WEB.ipt	Production	CLAMP WEB	19
4		1	SUB-METAL FOLDING MACHINE 4	Assembly4-metal folding.iam	Production	Steel ASTM A36, steel S235JR	20
4.2	21	2	CLAMP TUBE	CLAMP TUBE.ipt	Production	CLAMP TUBE	21
4.4	22	1	CLAMP HANDLE	CLAMP HANDLE.ipt	Production	CLAMP HANDLE	22
5		1	SUB-METAL FOLDING MACHINE 5	Assembly5-metal folding.iam	Production	Steel ASTM A36, steel S235JR	23
5.1	24	1	STAND LEG	STAND LEG.ipt	Production	STAND LEG	24
5.2	25	2	STAND TOP	STAND TOP.ipt	Production	STAND TOP	25
5.3	26	1	STAND BOTTON	STAND BOTTON.ipt	Production	STAND BOTTON	26
5.4	27	1	STAND TIE	STAND TIE.ipt	Production	STAND TIE	27
5.5	28	1	STAND PLATE	STAND PLATE.ipt	Production	STAND PLATE	28
5.6	29	1	STAND SUPPORT	STAND SUPPORT.ipt	Production	STAND SUPPORT	29
7		2	DIN 94 - 4 x 28	DIN 94 - 4 x 28.ipt		Split Pin	
8		2	DIN 125 - A 21	DIN 125 - A 21.ipt		Washer	
9		2	DIN 961 - M10 x 50	DIN 961 - M10 x 50 x 46,25.ipt		Hex-Head Bolt	
10		2	DIN 961 - M20 x 70	DIN 961 - M20 x 70 x 64.ipt		Hex-Head Bolt	
11		2	DIN 555-5 - M20	DIN 555-5 - M20.ipt		Hex Nut	

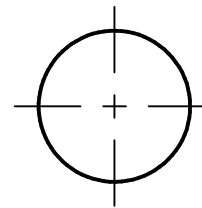
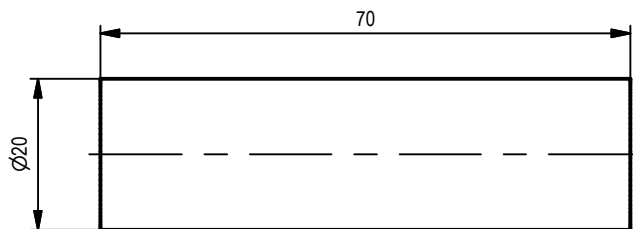
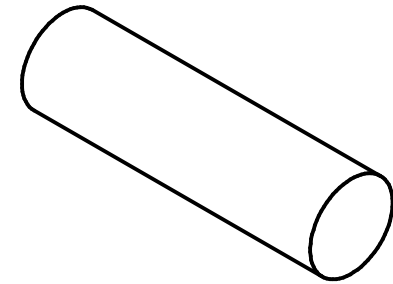
PROJEKT <b>Metall-Abkantmaschine</b>		ERSTELLT VON A. PARDO		GENEHMIGT VON D. Jaeger	
TEIL-NAME parts list metal folding machine		TEIL-CODE B1		DOKUMENTTYP ASSEMBY	
 Open Source Ecology e.V. Knobelsdorffstr. 22 14059 Berlin <a href="http://www.ose-germany.de">www.ose-germany.de</a> +49 (0) 30 / 92282426		LIZENZ <b>CERN-OHL</b>		DATEI-NAME parts list metal folding machine.iam	
		VERSION 1.0		MENGE	
		SCALE 1 / 100		SEITE	
				DATE 25-10-2020	




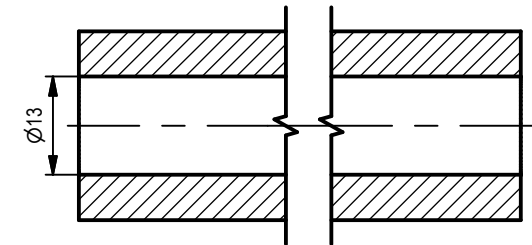
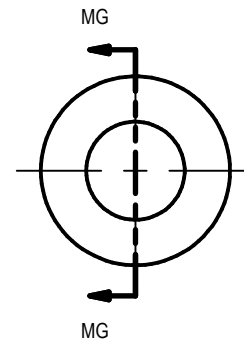
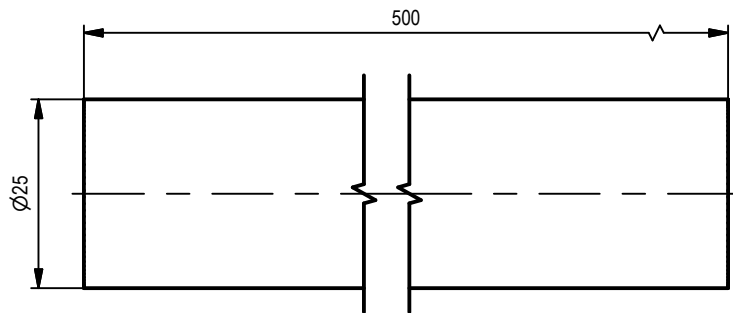
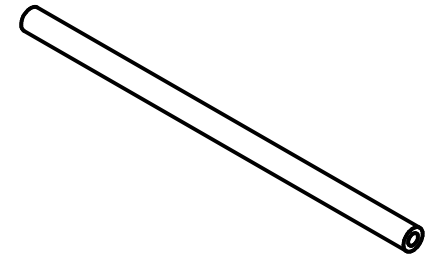
PROJEKT <b>Metall-Abkantmaschine</b>	ERSTELLT VON A. PARDO	GENEHMIGT VON D. Jaeger		
TEIL-NAME Assembly1-metal folding	TEIL-CODE 1	DOKUMENTTYP ASSAMBY	WERKSTOFF	
 Open Source Ecology e.V. Knobelsdorffstr. 22 14059 Berlin <a href="http://www.ose-germany.de">www.ose-germany.de</a> +49 (0) 30 / 92282426	LIZENZ <b>CERN-OHL</b>	DATEI-NAME Assembly1-metal folding.iam	VERSION 1.0	MENGE
		SCALE 1 / 8	SEITE	DATE 25-10-2020




PROJEKT <b>Metall-Abkantmaschine</b>	ERSTELLT VON A. PARDO	GENEHMIGT VON D. Jaeger		
TEIL-NAME FIXED BEAM	TEIL-CODE 2.1	DOKUMENTTYP Production	WERKSTOFF	
 Open Source Ecology e.V. Knobelsdorffstr. 22 14059 Berlin <a href="http://www.ose-germany.de">www.ose-germany.de</a> +49 (0) 30 / 92282426	LIZENZ <b>CERN-OHL</b>	DATEI-NAME FIXED BEAM.ipt	VERSION 1.0	MENGE
		SCALE 1 : 1.7	SEITE	DATE 19-10-2020

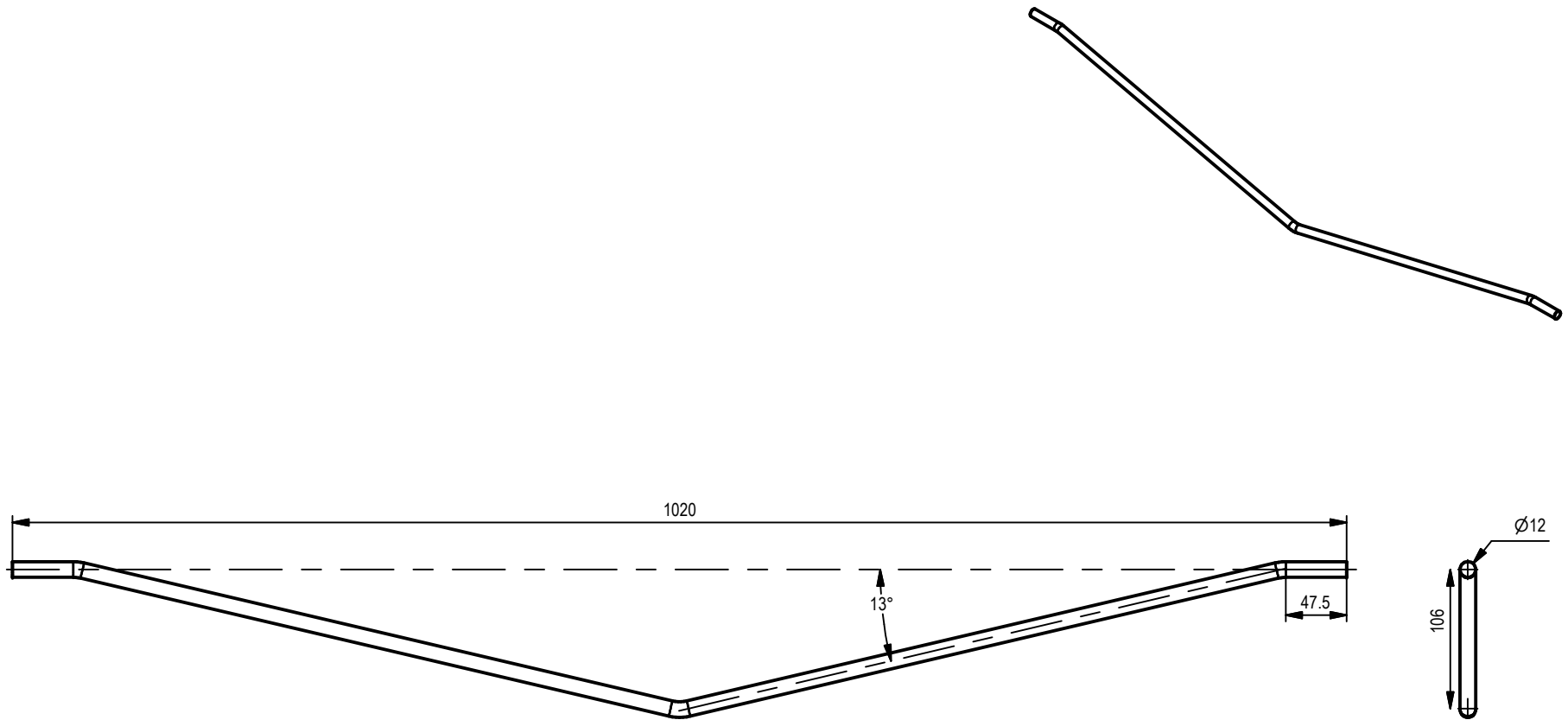



PROJEKT <b>Metall-Abkantmaschine</b>	ERSTELLT VON A. PARDO	GENEHMIGT VON D. Jaeger		
TEIL-NAME PIVOT BAR	TEIL-CODE 1.2	DOKUMENTTYP Production	WERKSTOFF	
 Open Source Ecology e.V. Knobelsdorffstr. 22 14059 Berlin <a href="http://www.ose-germany.de">www.ose-germany.de</a> +49 (0) 30 / 92282426	LIZENZ <b>CERN-OHL</b>	DATEI-NAME PIVOT BAR.ipt	VERSION 1.0	MENGE
		SCALE 1:1	SEITE	DATE 19-10-2020



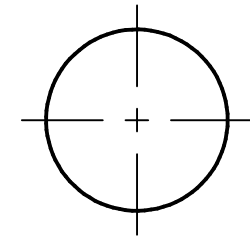
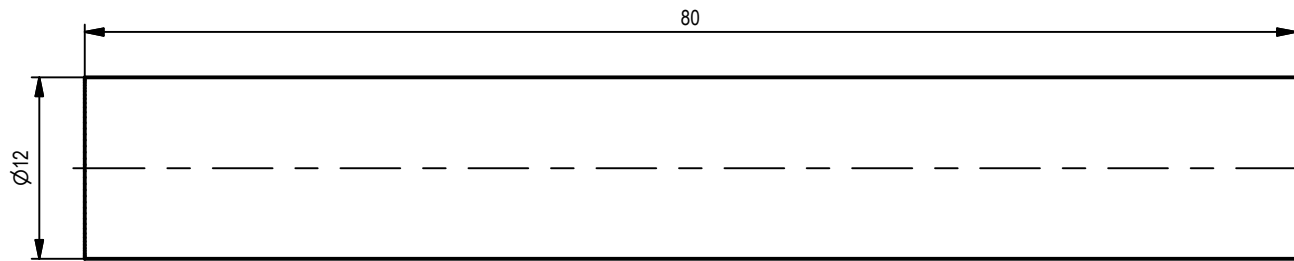
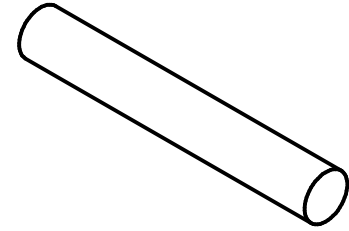
SECTION MG-MG  
SCALE 1 : 1


PROJEKT <b>Metall-Abkantmaschine</b>	ERSTELLT VON A. PARDO	GENEHMIGT VON D. Jaeger		
TEIL-NAME HANDLE	TEIL-CODE 1.3	DOKUMENTTYP Production	WERKSTOFF	
 Open Source Ecology e.V. Knobelsdorffstr. 22 14059 Berlin <a href="http://www.ose-germany.de">www.ose-germany.de</a> +49 (0) 30 / 92282426	LIZENZ <b>CERN-OHL</b>	DATEI-NAME HANDLE.ipt	VERSION 1.0	MENGE
		SCALE 1 : 1	SEITE	DATE 19-10-2020

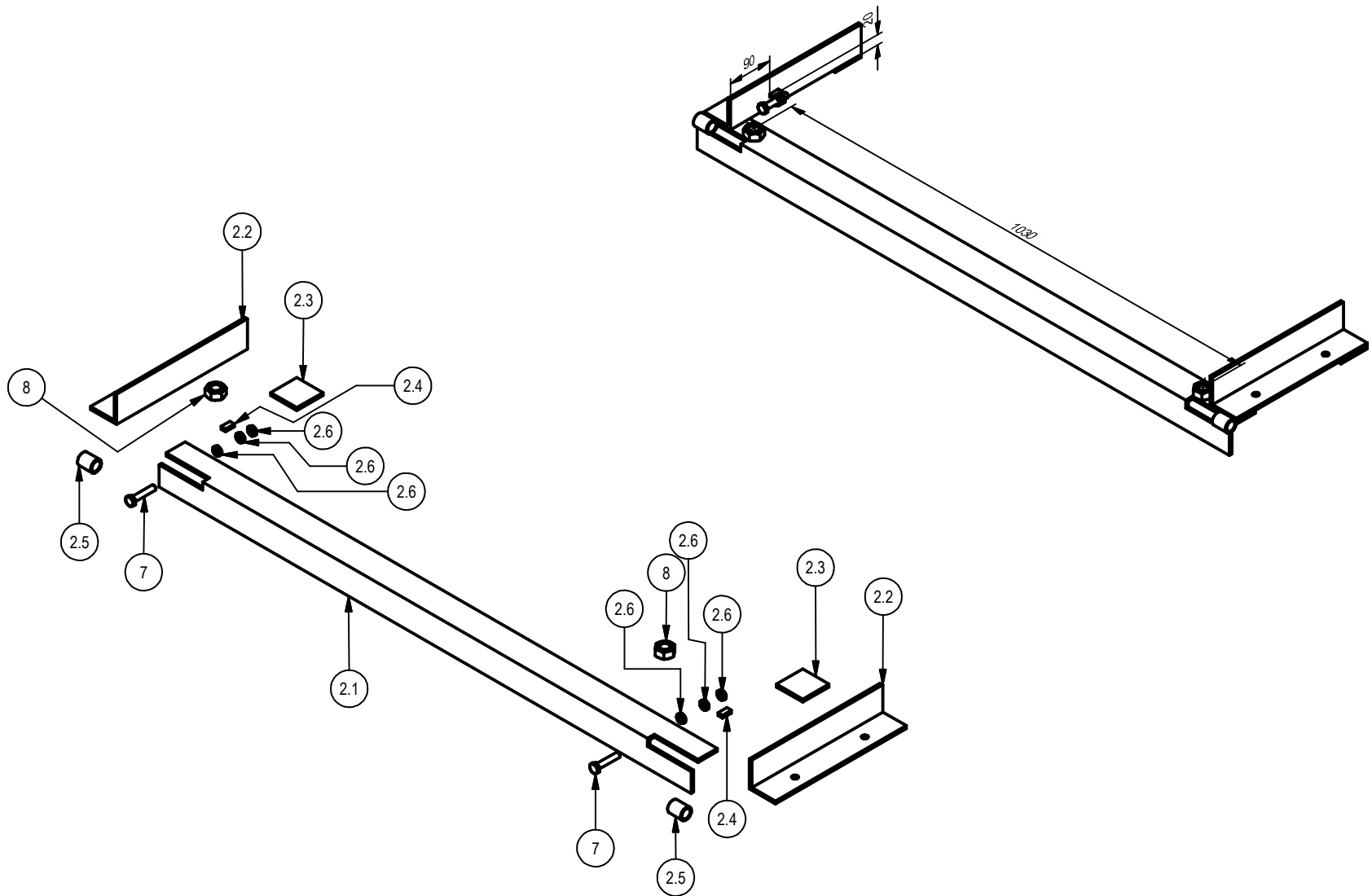



PROJEKT <b>Metall-Abkantmaschine</b>	ERSTELLT VON A. PARDO	GENEHMIGT VON D. Jaeger		
TEIL-NAME BEAM TIE	TEIL-CODE 1.4	DOKUMENTTYP Production	WERKSTOFF	
 Open Source Ecology e.V. Knobelsdorffstr. 22 14059 Berlin <a href="http://www.ose-germany.de">www.ose-germany.de</a> +49 (0) 30 / 92282426	LIZENZ <b>CERN-OHL</b>	DATEI-NAME BEAM TIE.ipt	VERSION 1.0	MENGE
		SCALE 1 / 5	SEITE	DATE 19-10-2020

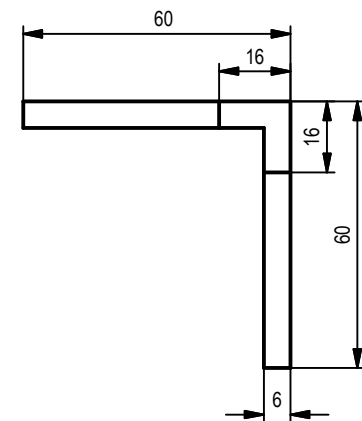
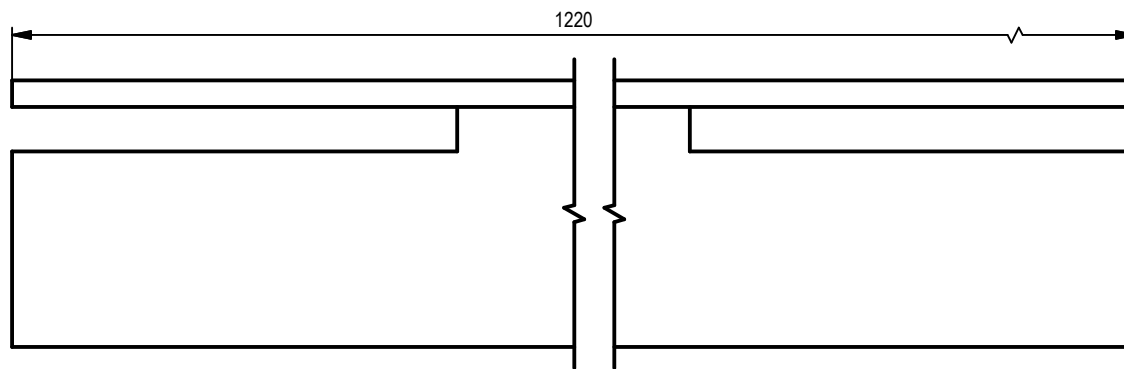
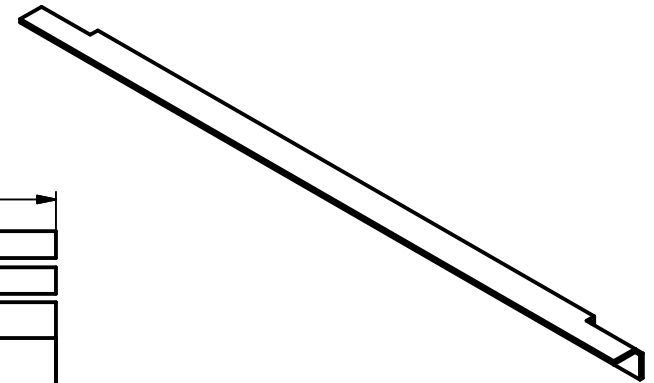
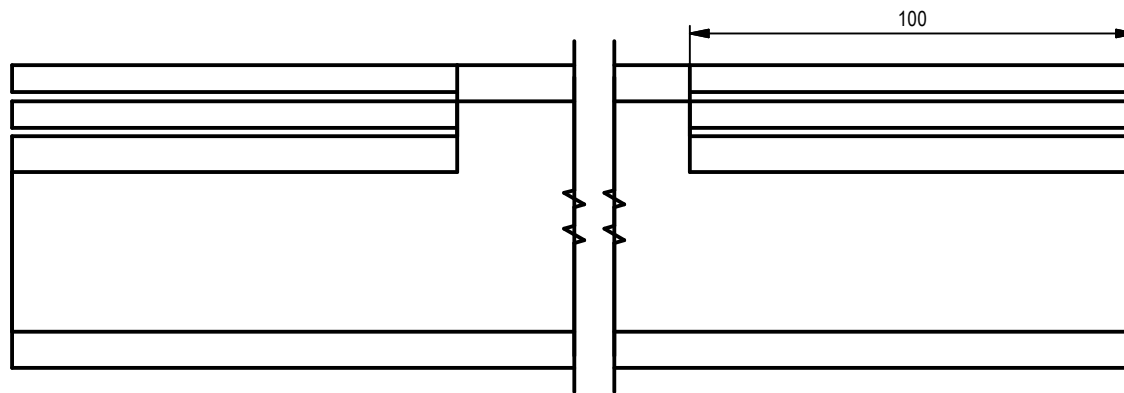





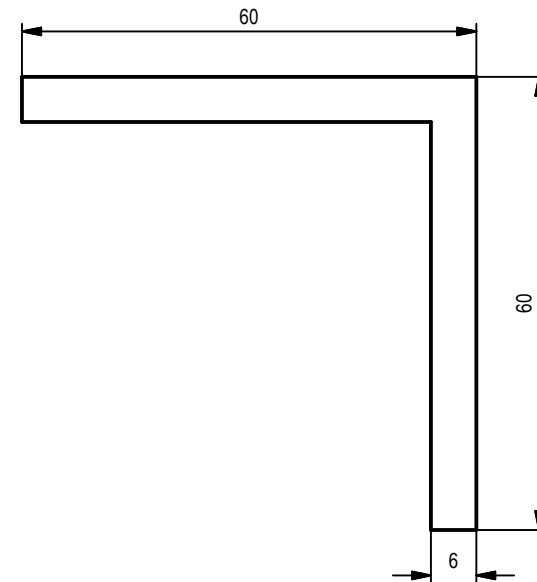
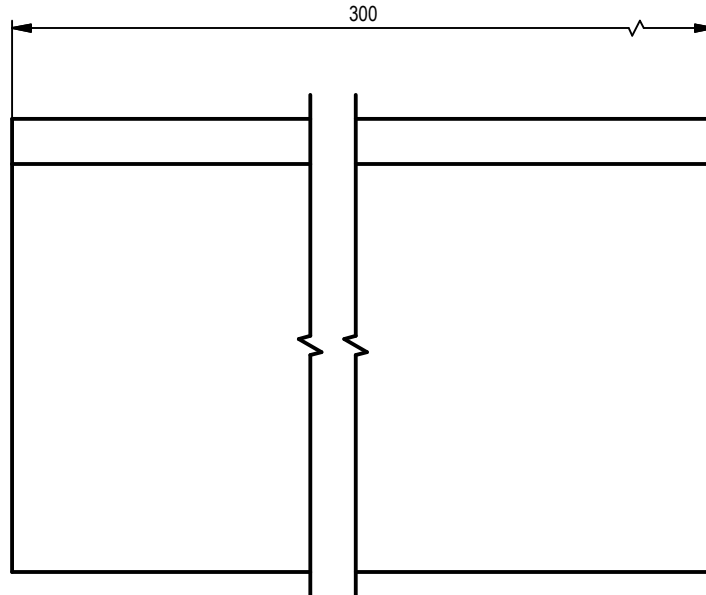
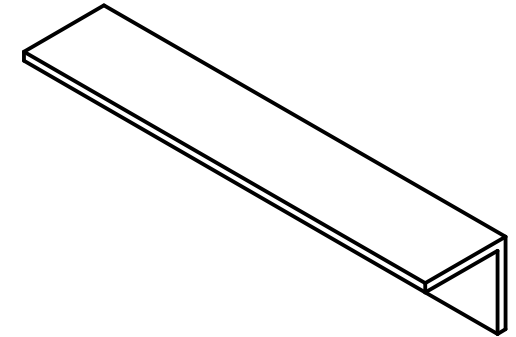
PROJEKT <b>Metall-Abkantmaschine</b>		ERSTELLT VON A. PARDO		GENEHMIGT VON D. Jaeger		
TEIL-NAME BEAM STRUT		TEIL-CODE 1.5	DOKUMENTTYP Production		WERKSTOFF	
 Open Source Ecology e.V. Knobelsdorffstr. 22 14059 Berlin <a href="http://www.ose-germany.de">www.ose-germany.de</a> +49 (0) 30 / 92282426		LIZENZ <b>CERN-OHL</b>	DATEI-NAME BEAM STRUT.ipt		VERSION 1.0	MENGE
			SCALE 2 : 1	SEITE	DATE 19-10-2020	




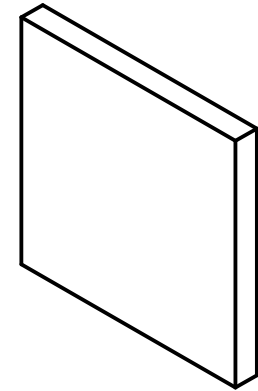
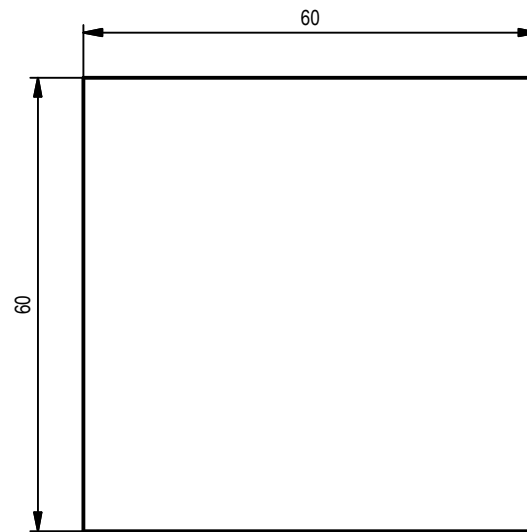
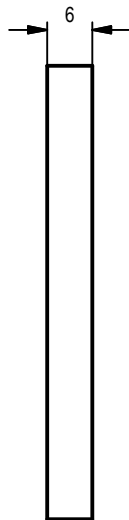
PROJEKT <b>Metall-Abkantmaschine</b>		ERSTELLT VON A. PARDO		GENEHMIGT VON D. Jaeger	
TEIL-NAME Assembly2-metal folding		TEIL-CODE 2		DOKUMENTTYP ASSAMBY	
 Open Source Ecology e.V. Knobelsdorffstr. 22 14059 Berlin <a href="http://www.ose-germany.de">www.ose-germany.de</a> +49 (0) 30 / 92282426		LIZENZ <b>CERN-OHL</b>		DATEI-NAME Assembly2-metal folding.iam	
		VERSION 1.0		MENGE 	
		SCALE 1 / 10		SEITE 	
				DATE 12-11-2020	




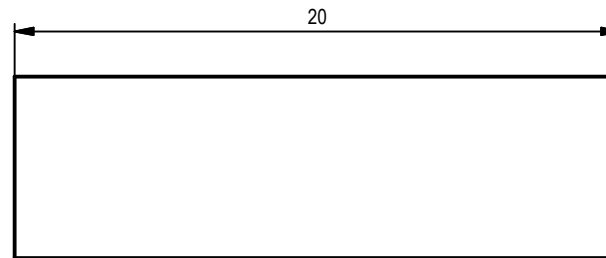
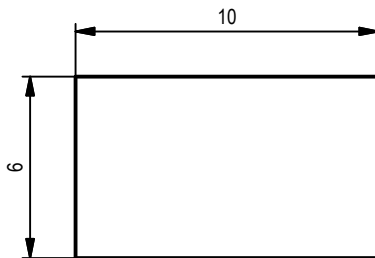
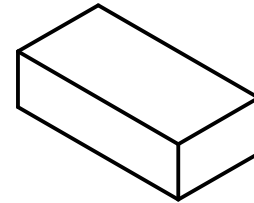
PROJEKT <b>Metall-Abkantmaschine</b>	ERSTELLT VON A. PARDO	GENEHMIGT VON D. Jaeger		
TEIL-NAME FIXED BEAM	TEIL-CODE 2.1	DOKUMENTTYP Production	WERKSTOFF	
 Open Source Ecology e.V. Knobelsdorffstr. 22 14059 Berlin <a href="http://www.ose-germany.de">www.ose-germany.de</a> +49 (0) 30 / 92282426	LIZENZ <b>CERN-OHL</b>	DATEI-NAME FIXED BEAM.ipt	VERSION 1.0	MENGE
		SCALE 1 : 1.7	SEITE	DATE 19-10-2020




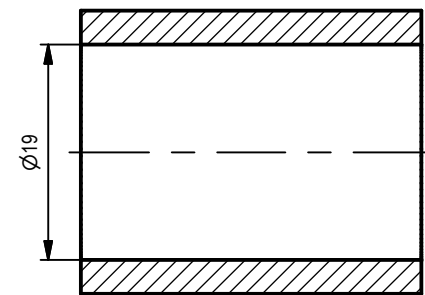
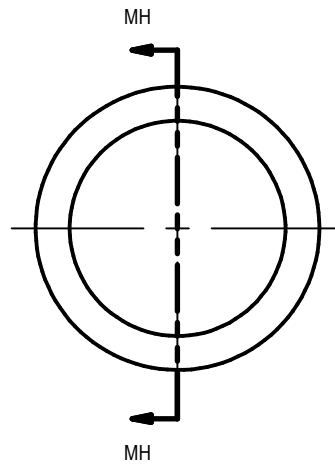
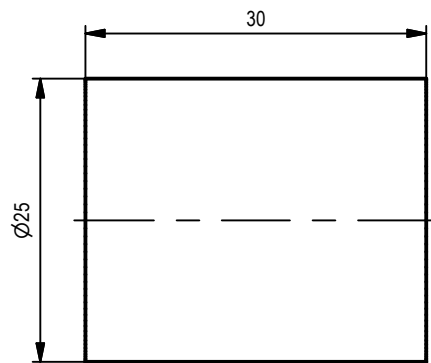
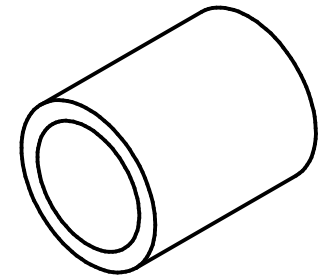
PROJEKT <b>Metall-Abkantmaschine</b>	ERSTELLT VON A. PARDO	GENEHMIGT VON D. Jaeger		
TEIL-NAME FRAME SLIDE	TEIL-CODE 2.2	DOKUMENTTYP Production	WERKSTOFF	
 Open Source Ecology e.V. Knobelsdorffstr. 22 14059 Berlin <a href="http://www.ose-germany.de">www.ose-germany.de</a> +49 (0) 30 / 92282426	LIZENZ <b>CERN-OHL</b>	DATEI-NAME FRAME SLIDE.ipt	VERSION 1.0	MENGE
		SCALE 1 : 1	SEITE	DATE 19-10-2020




PROJEKT <b>Metall-Abkantmaschine</b>	ERSTELLT VON A. PARDO	GENEHMIGT VON D. Jaeger		
TEIL-NAME FRAME SPACER	TEIL-CODE 2.3	DOKUMENTTYP Production	WERKSTOFF	
 Open Source Ecology e.V. Knobelsdorffstr. 22 14059 Berlin <a href="http://www.ose-germany.de">www.ose-germany.de</a> +49 (0) 30 / 92282426	LIZENZ <b>CERN-OHL</b>	DATEI-NAME FRAME SPACER.ipt	VERSION 1.0	MENGE
		SCALE 1:1	SEITE	DATE 19-10-2020

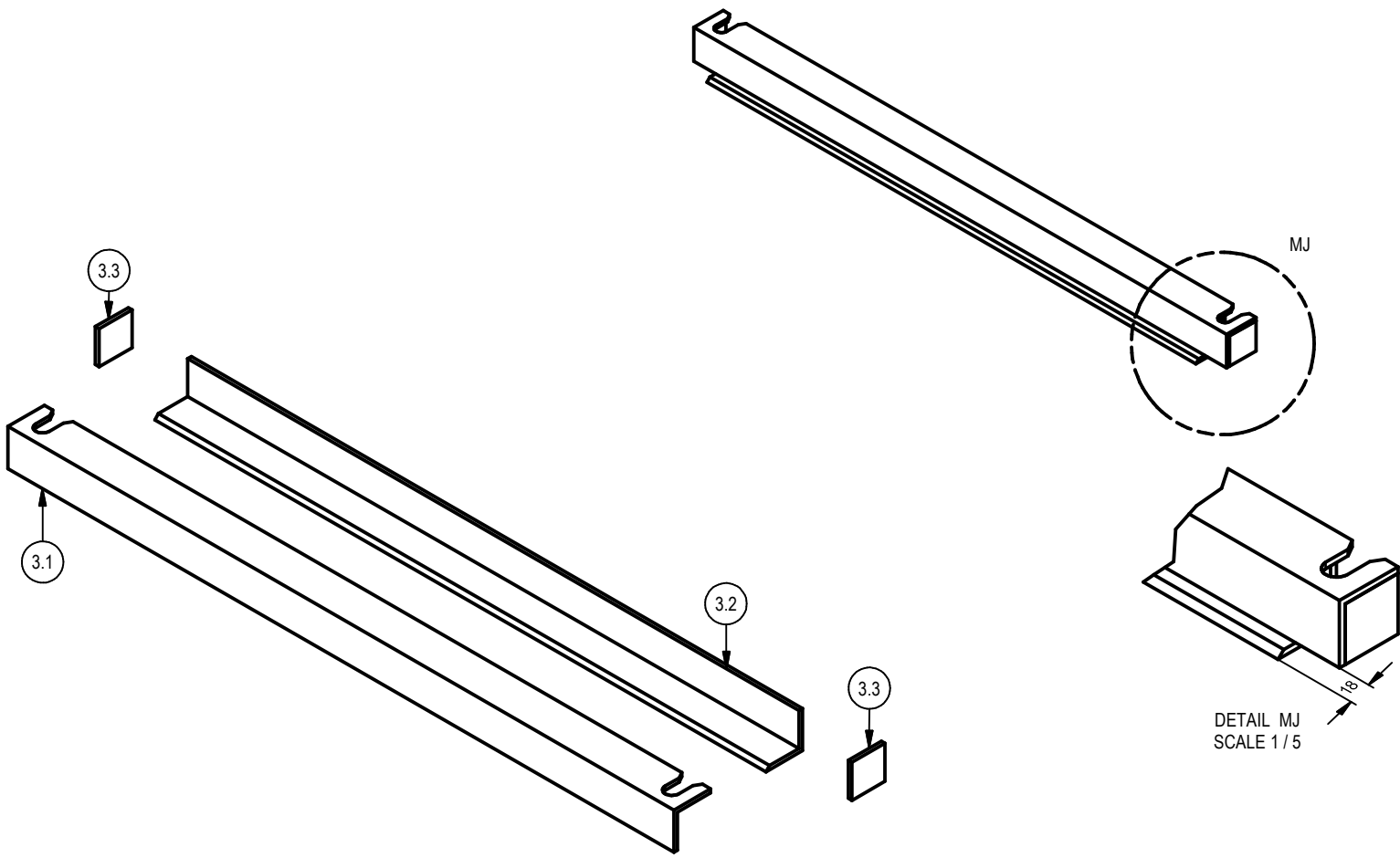



PROJEKT <b>Metall-Abkantmaschine</b>	ERSTELLT VON A. PARDO	GENEHMIGT VON D. Jaeger		
TEIL-NAME CLAMP SPACER	TEIL-CODE 2.4	DOKUMENTTYP Production	WERKSTOFF	
 Open Source Ecology e.V. Knobelsdorffstr. 22 14059 Berlin <a href="http://www.ose-germany.de">www.ose-germany.de</a> +49 (0) 30 / 92282426	LIZENZ <b>CERN-OHL</b>	DATEI-NAME CLAMP SPACER.ipt	VERSION 1.0	MENGE
		SCALE 4 : 1	SEITE	DATE 19-10-2020



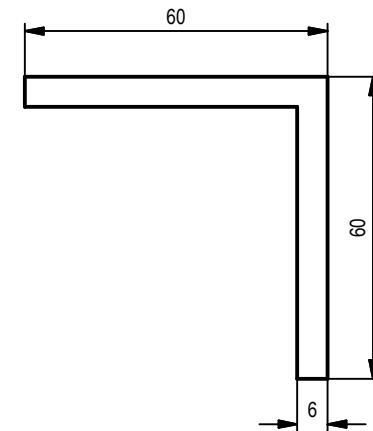
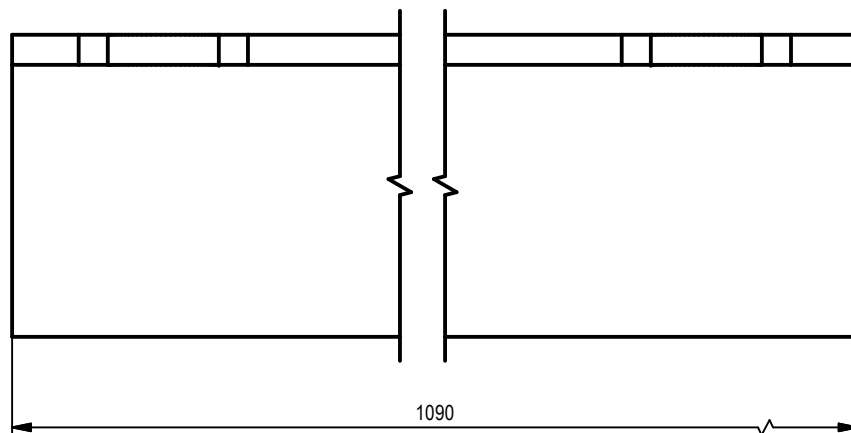
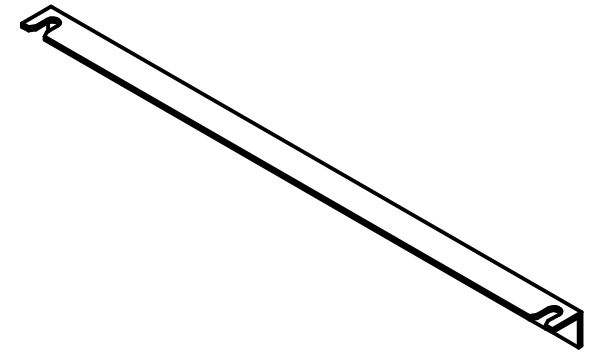
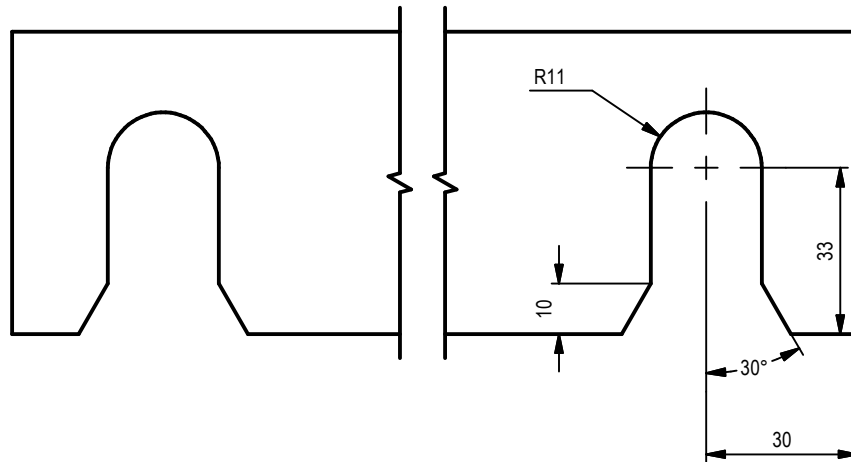
SECTION MH-MH  
SCALE 1.5: 1


PROJEKT <b>Metall-Abkantmaschine</b>	ERSTELLT VON A. PARDO	GENEHMIGT VON D. Jaeger		
TEIL-NAME CLAMP TUBE	TEIL-CODE 4.2	DOKUMENTTYP Production	WERKSTOFF	
 Open Source Ecology e.V. Knobelsdorffstr. 22 14059 Berlin <a href="http://www.ose-germany.de">www.ose-germany.de</a> +49 (0) 30 / 92282426	LIZENZ <b>CERN-OHL</b>	DATEI-NAME CLAMP TUBE.ipt	VERSION 1.0	MENGE
		SCALE 1.5: 1	SEITE	DATE 19-10-2020

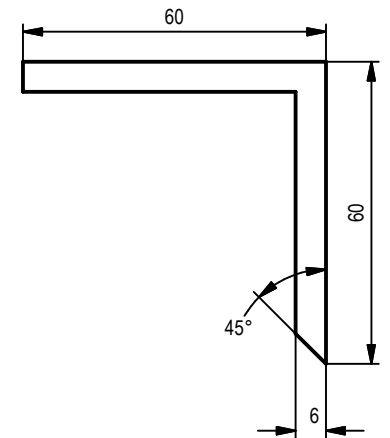
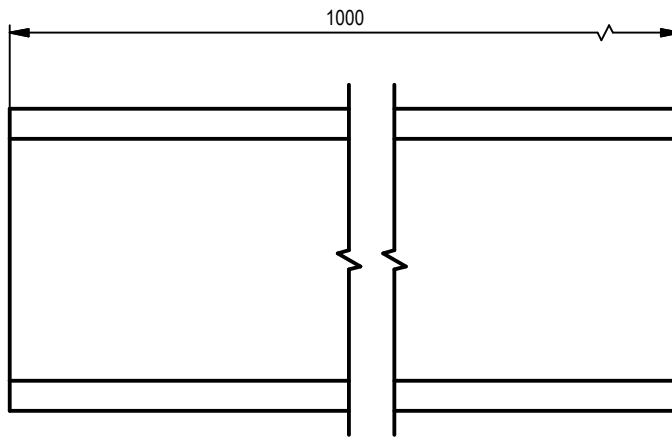
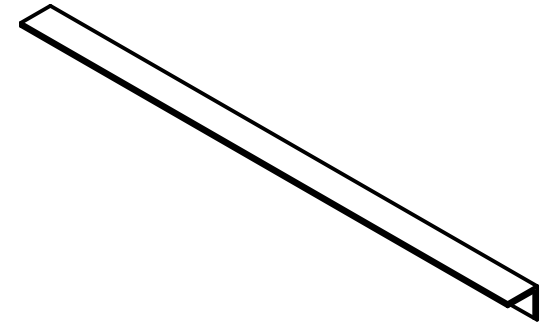



PROJEKT <b>Metall-Abkantmaschine</b>	ERSTELLT VON A. PARDO	GENEHMIGT VON D. Jaeger		
TEIL-NAME Assembly3-metal folding	TEIL-CODE 3	DOKUMENTTYP ASSAEMBY	WERKSTOFF	
 <p>Open Source Ecology e.V. Knobelsdorffstr. 22 14059 Berlin www.ose-germany.de +49 (0) 30 / 92282426</p>	LIZENZ <b>CERN-OHL</b>	DATEI-NAME Assembly3-metal folding.iam	VERSION 1.0	MENGE
		SCALE 1 / 8	SEITE	DATE 12-11-2020

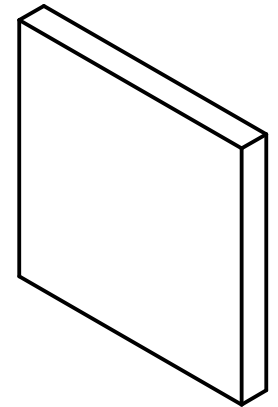
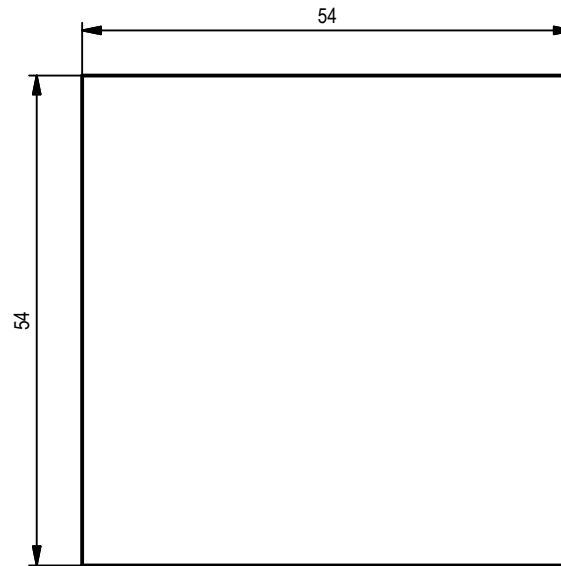
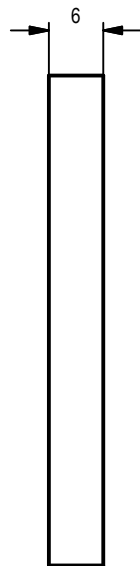





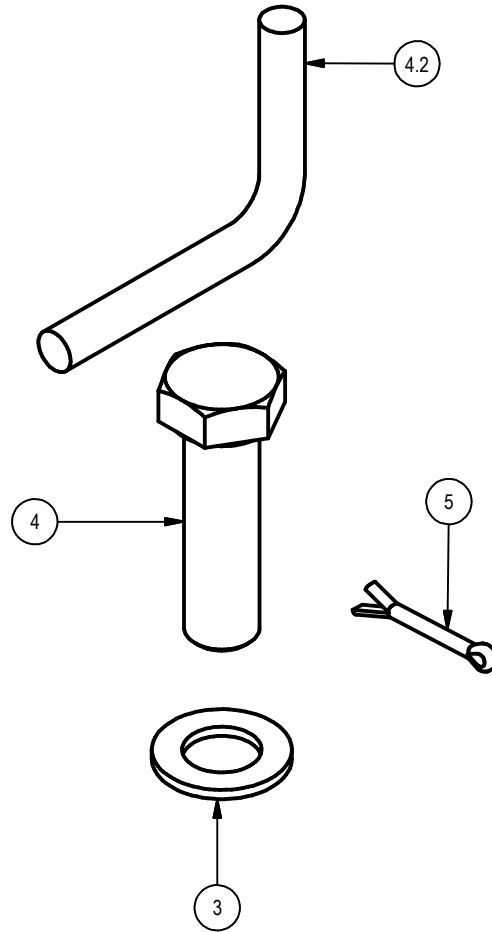
PROJEKT <b>Metall-Abkantmaschine</b>	ERSTELLT VON A. PARDO	GENEHMIGT VON D. Jaeger		
TEIL-NAME CLAMP TOP	TEIL-CODE 3.1	DOKUMENTTYP Production	WERKSTOFF	
 Open Source Ecology e.V. Knobelsdorffstr. 22 14059 Berlin <a href="http://www.ose-germany.de">www.ose-germany.de</a> +49 (0) 30 / 92282426	LIZENZ <b>CERN-OHL</b>	DATEI-NAME CLAMP TOP.ipt	VERSION 1.0	MENGE
		SCALE 1 : 1.5	SEITE	DATE 19-10-2020




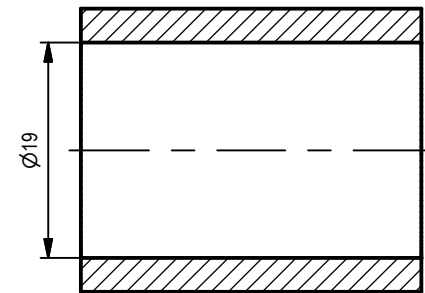
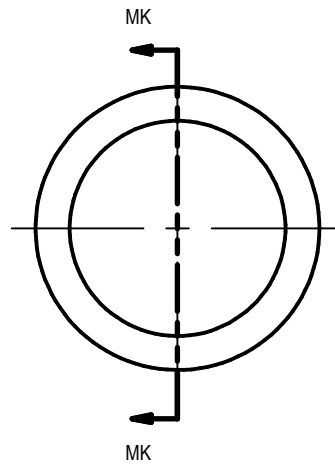
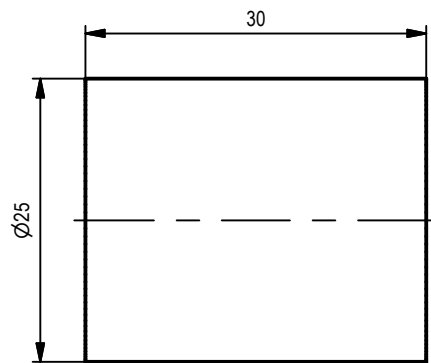
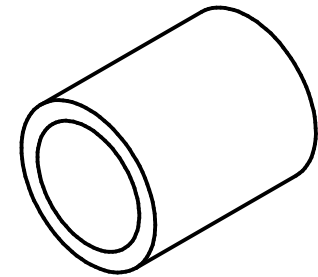
PROJEKT <b>Metall-Abkantmaschine</b>	ERSTELLT VON A. PARDO	GENEHMIGT VON D. Jaeger		
TEIL-NAME CLAMP BOTTOM	TEIL-CODE 3.2	DOKUMENTTYP Production	WERKSTOFF	
 Open Source Ecology e.V. Knobelsdorffstr. 22 14059 Berlin <a href="http://www.ose-germany.de">www.ose-germany.de</a> +49 (0) 30 / 92282426	LIZENZ <b>CERN-OHL</b>	DATEI-NAME CLAMP BOTTOM.ipt	VERSION 1.0	MENGE
		SCALE 1 : 1.5	SEITE	DATE 19-10-2020




PROJEKT <b>Metall-Abkantmaschine</b>	ERSTELLT VON A. PARDO	GENEHMIGT VON D. Jaeger		
TEIL-NAME CLAMP WEB	TEIL-CODE 3.3	DOKUMENTTYP Production	WERKSTOFF	
 Open Source Ecology e.V. Knobelsdorffstr. 22 14059 Berlin <a href="http://www.ose-germany.de">www.ose-germany.de</a> +49 (0) 30 / 92282426	LIZENZ <b>CERN-OHL</b>	DATEI-NAME CLAMP WEB.ipt	VERSION 1.0	MENGE
		SCALE 1.2 : 1	SEITE	DATE 19-10-2020

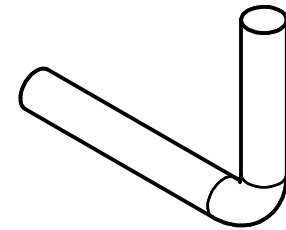
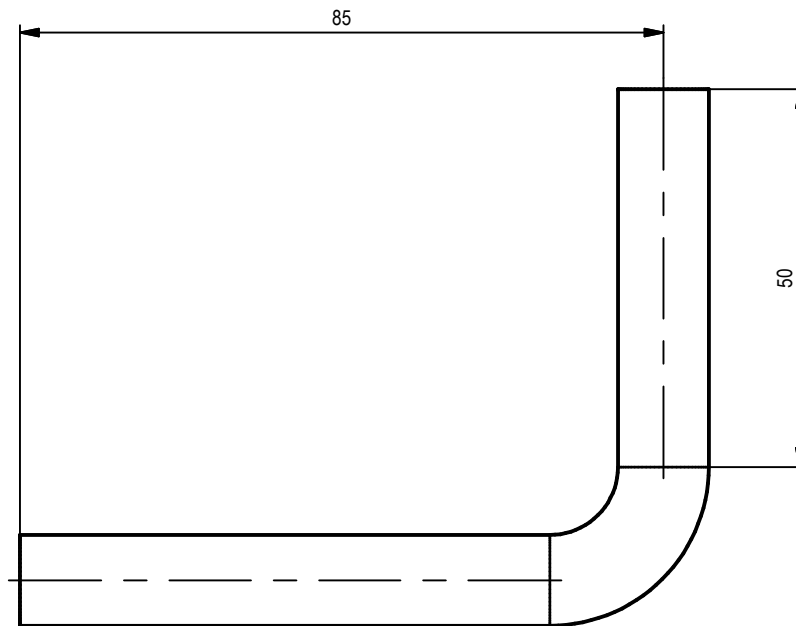
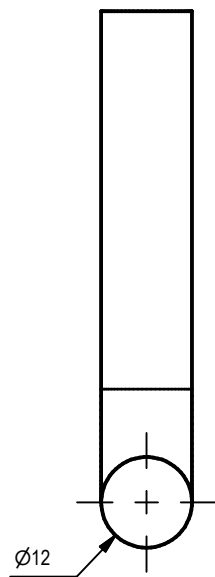



PROJEKT <b>Metall-Abkantmaschine</b>	ERSTELLT VON A. PARDO	GENEHMIGT VON D. Jaeger		
TEIL-NAME Assembly4-metal folding	TEIL-CODE 4	DOKUMENTTYP ASAMBY	WERKSTOFF	
 Open Source Ecology e.V. Knobelsdorffstr. 22 14059 Berlin <a href="http://www.ose-germany.de">www.ose-germany.de</a> +49 (0) 30 / 92282426	LIZENZ <b>CERN-OHL</b>	DATEI-NAME Assembly4-metal folding.iam	VERSION 1.0	MENGE
		SCALE 1 / 2	SEITE	DATE 12-11-2020

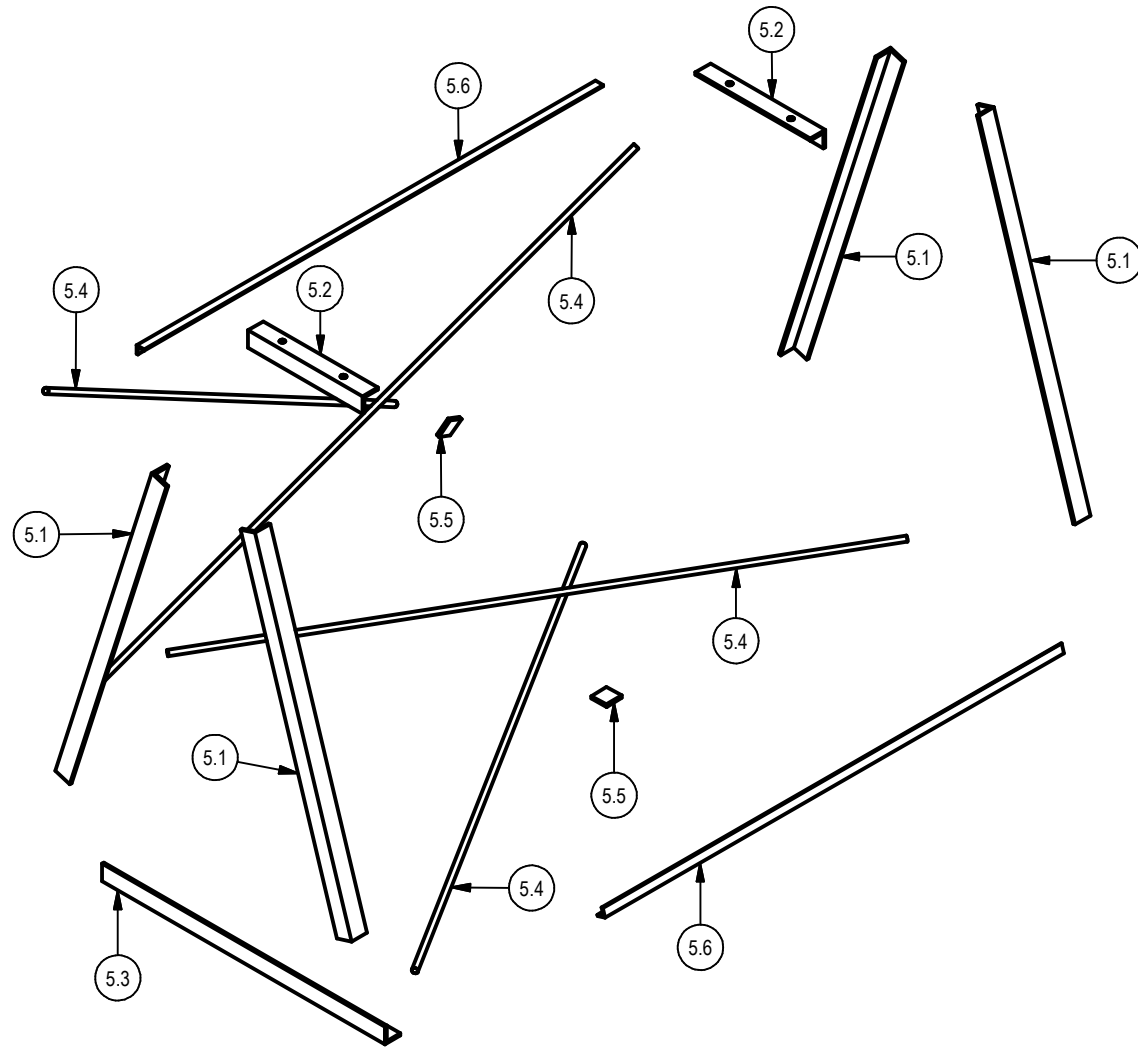



SECTION MK-MK  
SCALE 1.5: 1

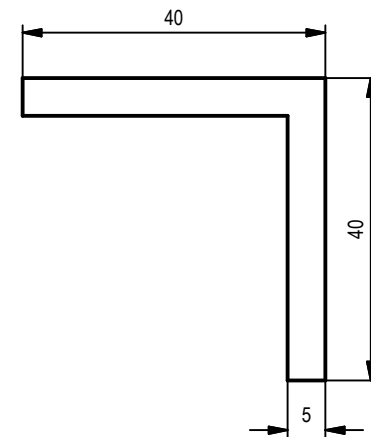
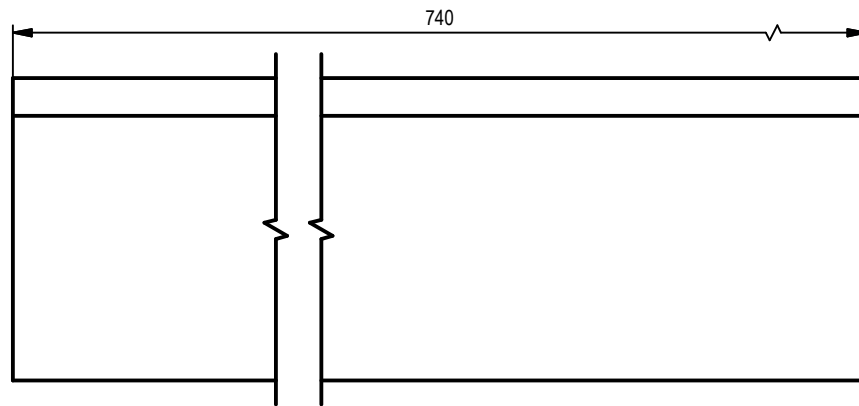
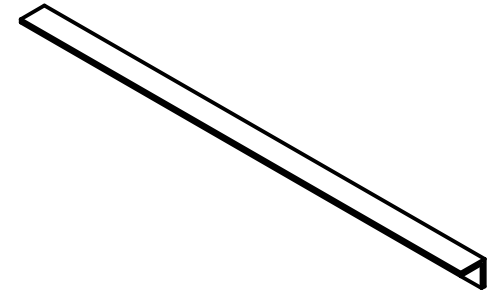
PROJEKT <b>Metall-Abkantmaschine</b>	ERSTELLT VON A. PARDO	GENEHMIGT VON D. Jaeger		
TEIL-NAME CLAMP TUBE	TEIL-CODE 4.2	DOKUMENTTYP Production	WERKSTOFF	
 Open Source Ecology e.V. Knobelsdorffstr. 22 14059 Berlin <a href="http://www.ose-germany.de">www.ose-germany.de</a> +49 (0) 30 / 92282426	LIZENZ <b>CERN-OHL</b>	DATEI-NAME CLAMP TUBE.ipt	VERSION 1.0	MENGE
		SCALE 1.5: 1	SEITE	DATE 19-10-2020




PROJEKT <b>Metall-Abkantmaschine</b>	ERSTELLT VON A. PARDO	GENEHMIGT VON D. Jaeger		
TEIL-NAME CLAMP HANDLE	TEIL-CODE 4.4	DOKUMENTTYP Production	WERKSTOFF	
 Open Source Ecology e.V. Knobelsdorffstr. 22 14059 Berlin <a href="http://www.ose-germany.de">www.ose-germany.de</a> +49 (0) 30 / 92282426	LIZENZ <b>CERN-OHL</b>	DATEI-NAME CLAMP HANDLE.ipt	VERSION 1.0	MENGE
		SCALE 1:1	SEITE	DATE 19-10-2020

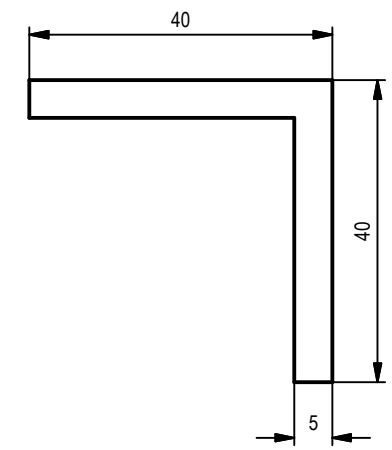
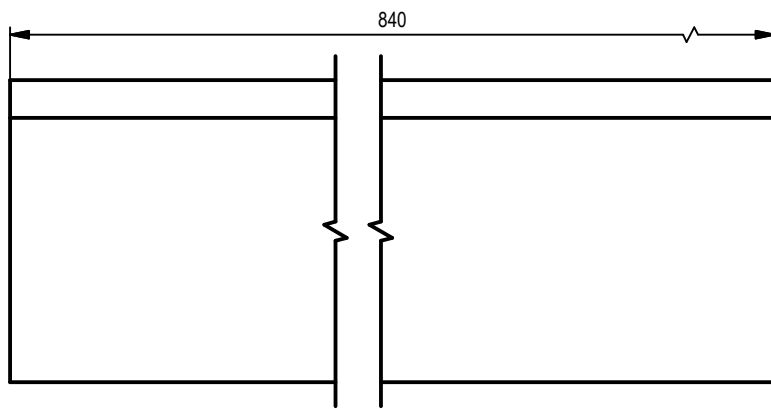
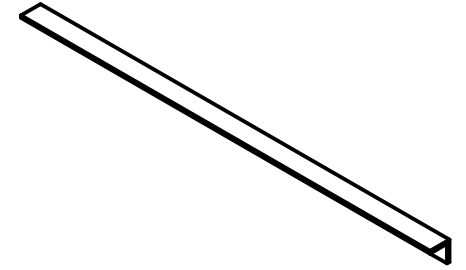



PROJEKT <b>Metall-Abkantmaschine</b>	ERSTELLT VON A. PARDO	GENEHMIGT VON D. Jaeger		
TEIL-NAME Assembly5-metal folding	TEIL-CODE 5	DOKUMENTTYP ASSEMBY	WERKSTOFF	
 <p>Open Source Ecology e.V. Knobelsdorffstr. 22 14059 Berlin www.ose-germany.de +49 (0) 30 / 92282426</p>	LIZENZ <b>CERN-OHL</b>	DATEI-NAME Assembly5-metal folding.iam	VERSION 1.0	MENGE
		SCALE 1 / 14	SEITE	DATE 12-11-2020

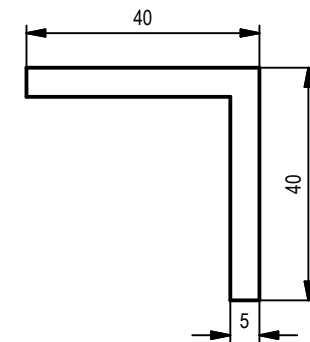
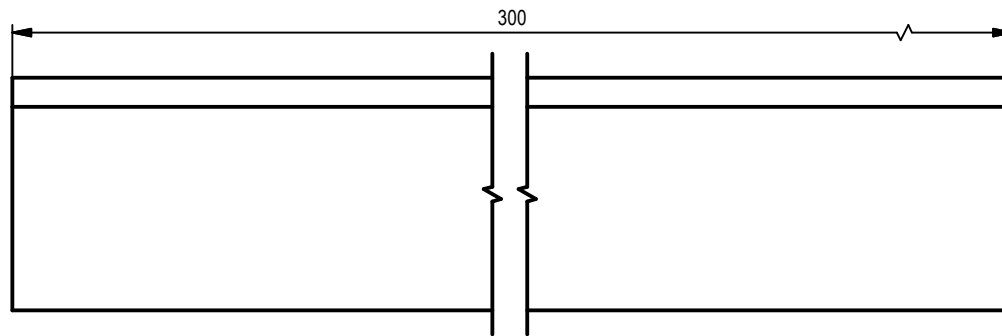
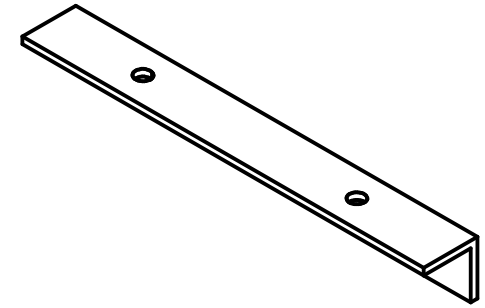
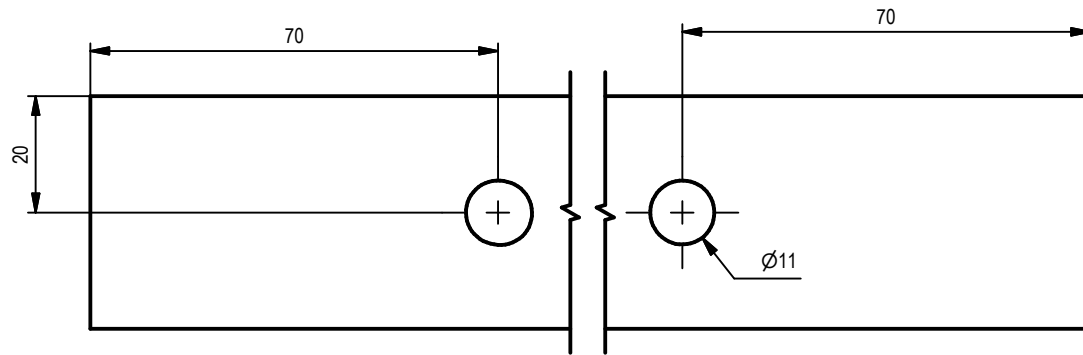



PROJEKT <b>Metall-Abkantmaschine</b>	ERSTELLT VON A. PARDO	GENEHMIGT VON D. Jaeger		
TEIL-NAME STAND BOTTON	TEIL-CODE 5.3	DOKUMENTTYP Production	WERKSTOFF	
 Open Source Ecology e.V. Knobelsdorffstr. 22 14059 Berlin <a href="http://www.ose-germany.de">www.ose-germany.de</a> +49 (0) 30 / 92282426	LIZENZ <b>CERN-OHL</b>	DATEI-NAME STAND BOTTON.ipt	VERSION 1.0	MENGE
		SCALE 1 : 1	SEITE	DATE 19-10-2020

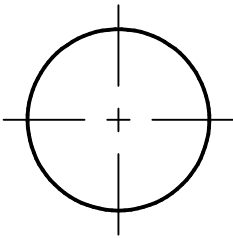
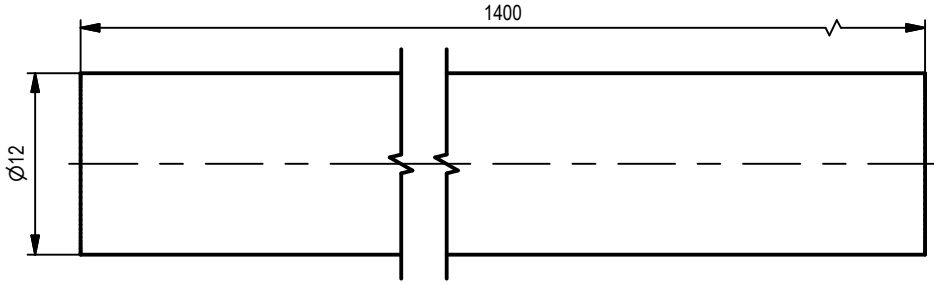
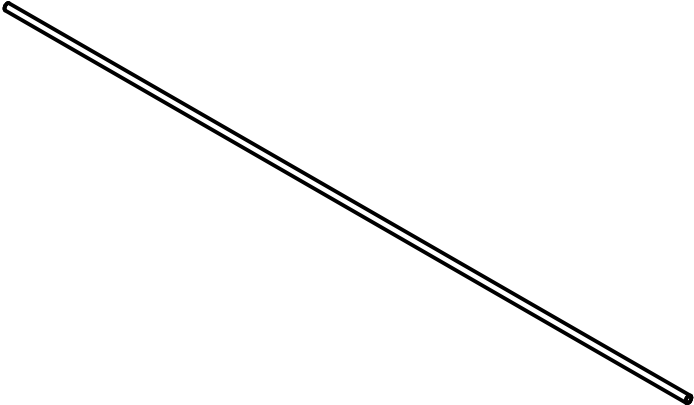





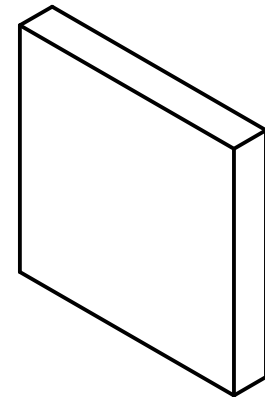
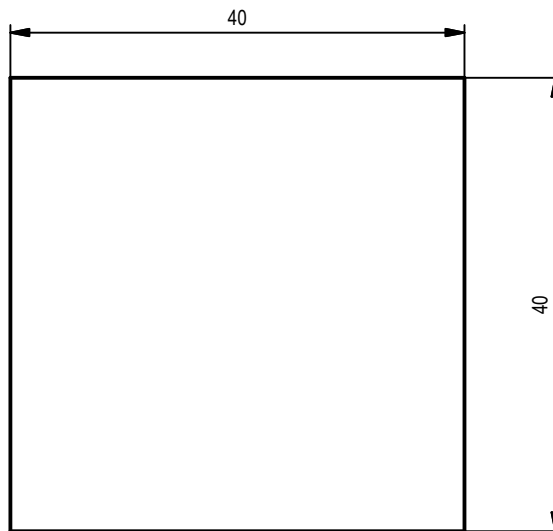
PROJEKT <b>Metall-Abkantmaschine</b>		ERSTELLT VON A. PARDO		GENEHMIGT VON D. Jaeger	
TEIL-NAME STAND LEG		TEIL-CODE 5.1		DOKUMENTTYP Production	
 Open Source Ecology e.V. Knobelsdorffstr. 22 14059 Berlin <a href="http://www.ose-germany.de">www.ose-germany.de</a> +49 (0) 30 / 92282426		LIZENZ <b>CERN-OHL</b>		DATEI-NAME STAND LEG.ipt	
				WERKSTOFF	
				VERSION 1.0	
				MENGE	
				SCALE 1 : 1	
				SEITE	
				DATE 19-10-2020	




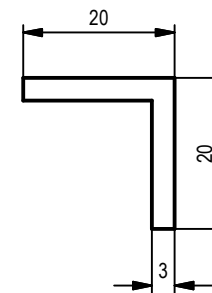
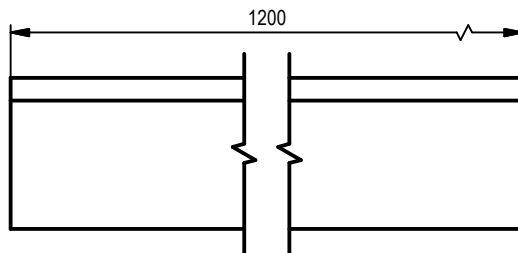
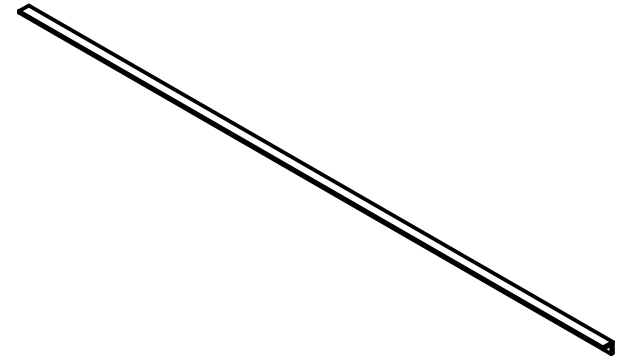
PROJEKT <b>Metall-Abkantmaschine</b>	ERSTELLT VON A. PARDO	GENEHMIGT VON D. Jaeger		
TEIL-NAME STAND TOP	TEIL-CODE 5.2	DOKUMENTTYP Production	WERKSTOFF	
 Open Source Ecology e.V. Knobelsdorffstr. 22 14059 Berlin <a href="http://www.ose-germany.de">www.ose-germany.de</a> +49 (0) 30 / 92282426	LIZENZ <b>CERN-OHL</b>	DATEI-NAME STAND TOP.ipt	VERSION 1.0	MENGE
		SCALE 1 : 1.3	SEITE	DATE 19-10-2020




PROJEKT <b>Metall-Abkantmaschine</b>		ERSTELLT VON A. PARDO		GENEHMIGT VON D. Jaeger	
TEIL-NAME STAND TIE		TEIL-CODE 5.4		DOKUMENTTYP Production	
 Open Source Ecology e.V. Knobelsdorffstr. 22 14059 Berlin <a href="http://www.ose-germany.de">www.ose-germany.de</a> +49 (0) 30 / 92282426		LIZENZ <b>CERN-OHL</b>		DATEI-NAME STAND TIE.ipt	
				VERSION 1.0	MENGE
				SCALE 2 : 1	SEITE DATE 19-10-2020



PROJEKT <b>Metall-Abkantmaschine</b>	ERSTELLT VON A. PARDO	GENEHMIGT VON D. Jaeger		
TEIL-NAME STAND PLATE	TEIL-CODE 5.5	DOKUMENTTYP Production	WERKSTOFF	
 Open Source Ecology e.V. Knobelsdorffstr. 22 14059 Berlin <a href="http://www.ose-germany.de">www.ose-germany.de</a> +49 (0) 30 / 92282426	LIZENZ <b>CERN-OHL</b>	DATEI-NAME STAND PLATE.ipt	VERSION 1.0	MENGE
		SCALE 1.5 : 1	SEITE	DATE 19-10-2020



PROJEKT <b>Metall-Abkantmaschine</b>	ERSTELLT VON A. PARDO	GENEHMIGT VON D. Jaeger		
TEIL-NAME STAND SUPPORT	TEIL-CODE 5.6	DOKUMENTTYP Production	WERKSTOFF	
 <p>Open Source Ecology e.V. Knobelsdorffstr. 22 14059 Berlin www.ose-germany.de +49 (0) 30 / 92282426</p>	LIZENZ <b>CERN-OHL</b>	DATEI-NAME STAND SUPPORT.ipt	VERSION 1.0	MENGE
		SCALE 1:1	SEITE	DATE 19-10-2020