

Base Assembly

Vitamins

Qty Description

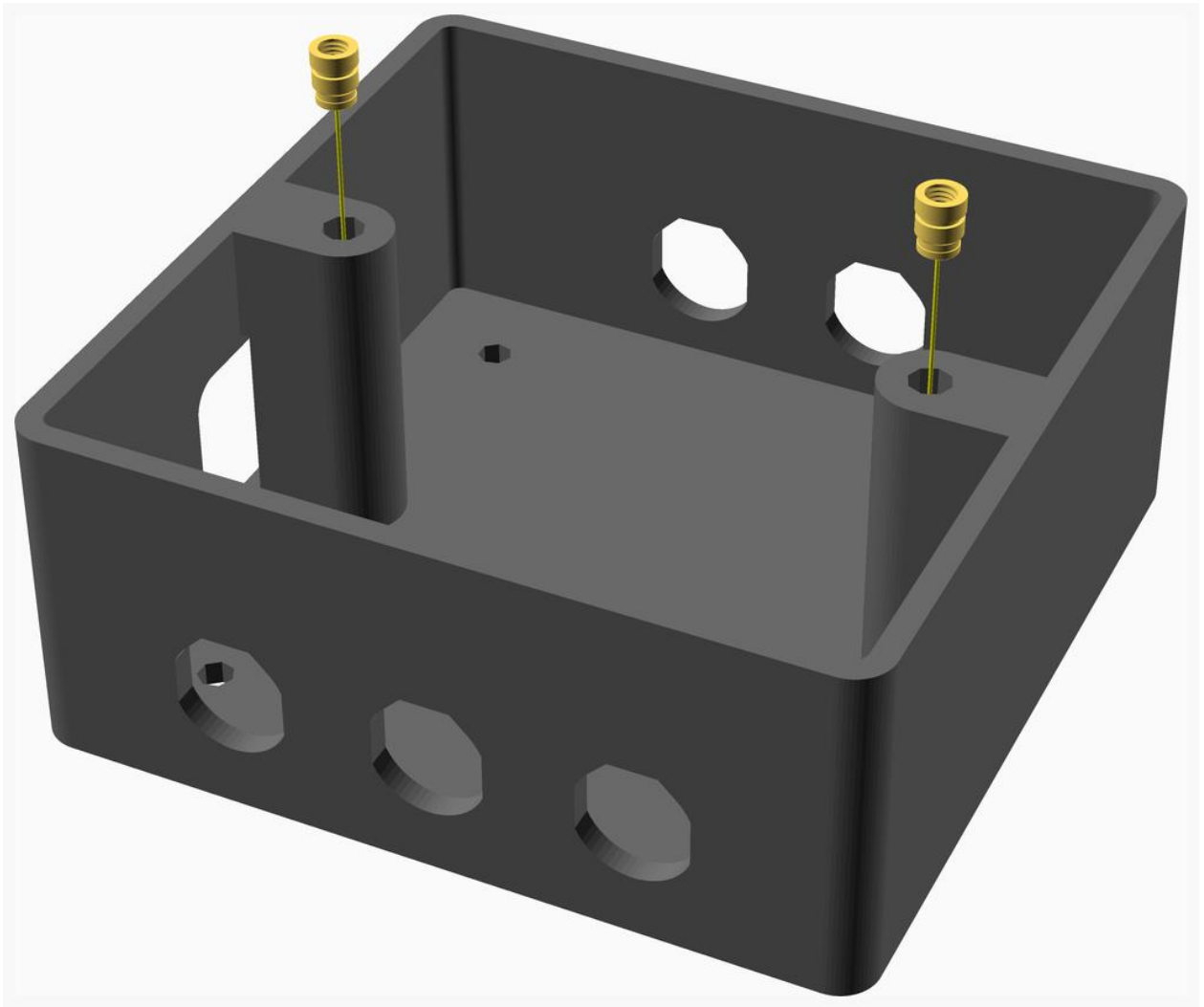
2 Heatfit insert M3

3D Printed parts

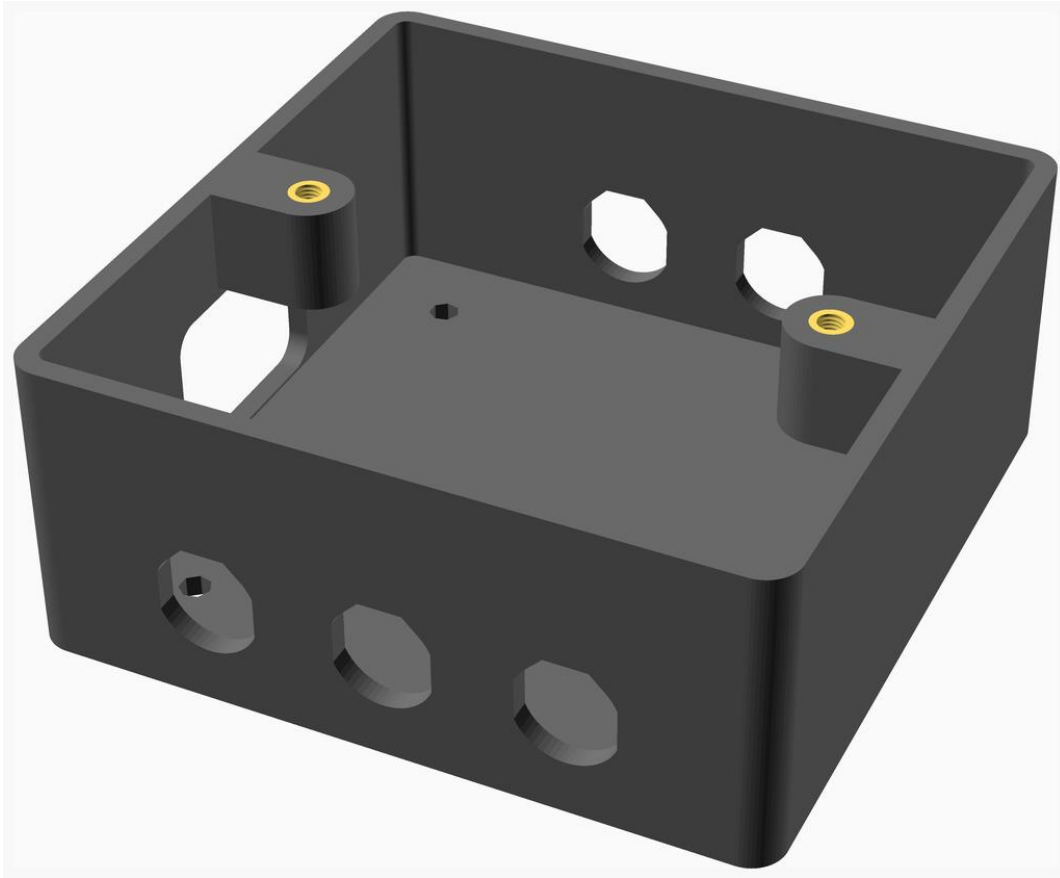
1 x socket_box.stl



Assembly instructions



1. Remove the support material from under the insert lugs.
2. Place the inserts into the holes in the lugs and press home with a soldering iron with a conical bit heated to 200°C.



[Top](#)

Feet Assembly

Vitamins

Qty Description

- 4 Nut M3 x 2.4mm nyloc
- 4 Screw M3 dome x 10mm
- 8 Washer M3 x 7mm x 0.5mm

3D Printed parts

4 x foot.stl

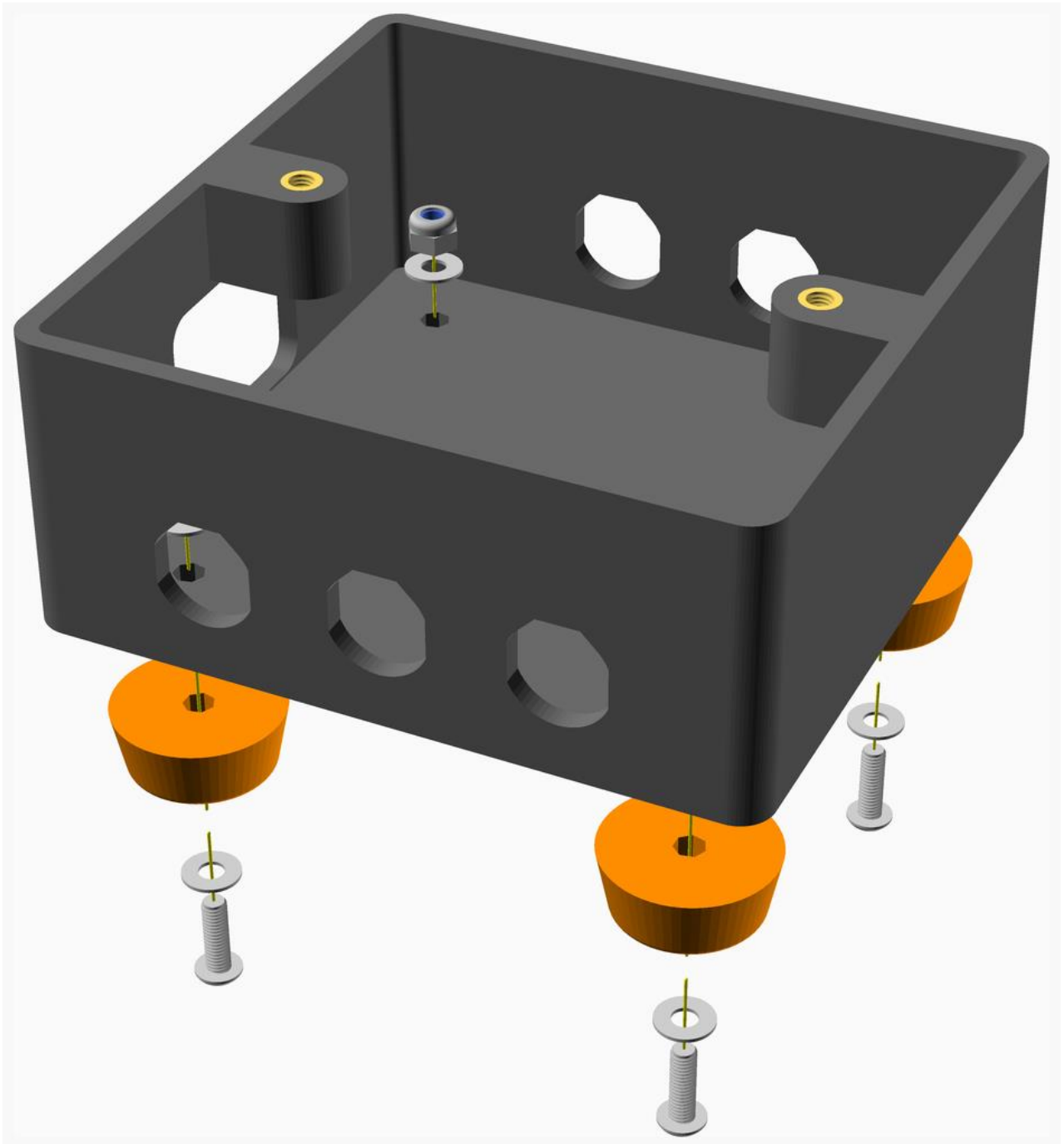


Sub-assemblies

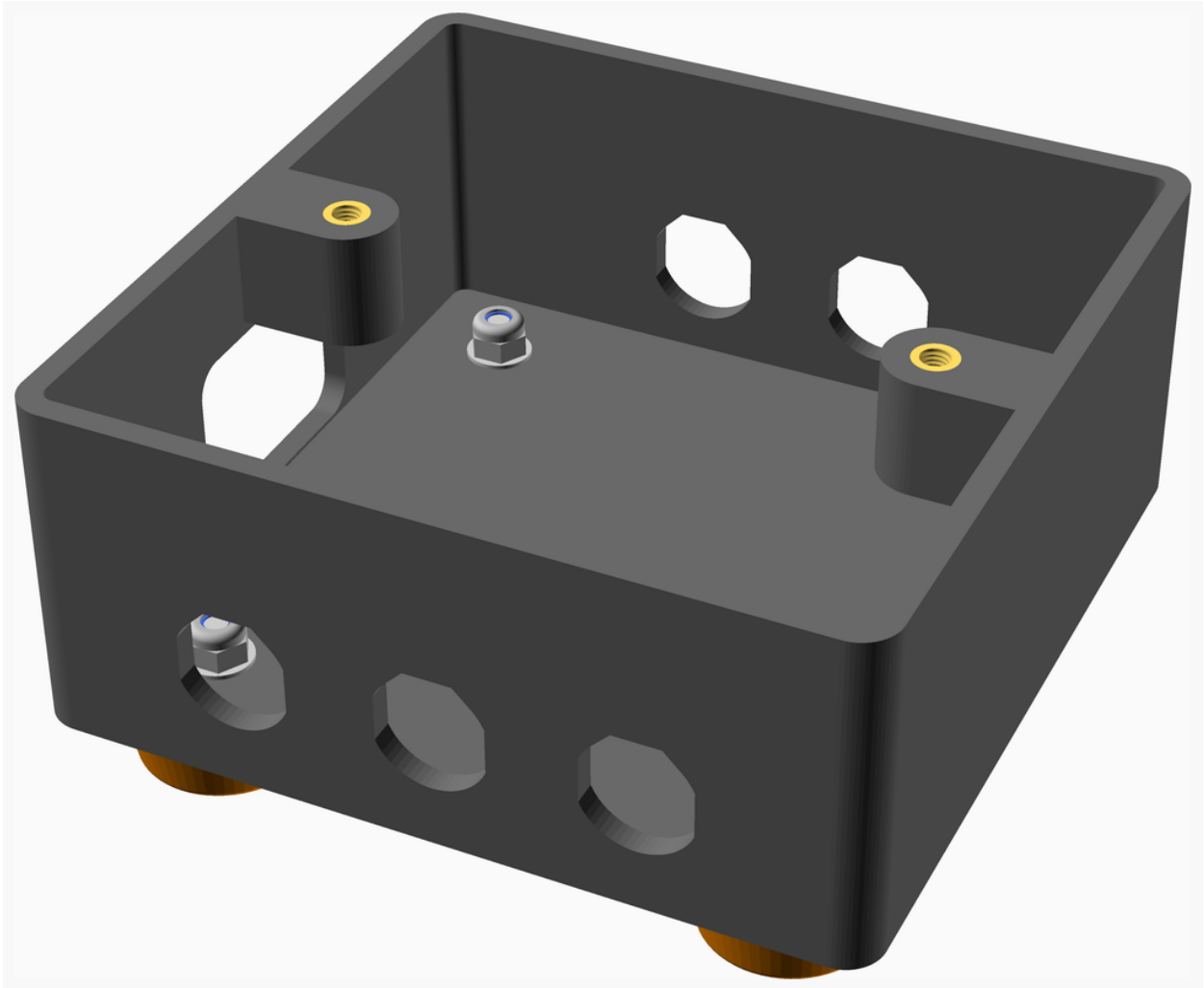
1 x base_assembly



Assembly instructions



- Attach the four feet using 10mm M3 dome screws, washers above and below and nyloc nuts



[Top](#)

Mains In Assembly

Vitamins

Qty Description

- 3 Heatshrink sleeving ID 3.2mm x 15mm - not shown
- 1 IEC inlet for ATX
- 2 Nut M3 x 2.4mm nyloc
- 2 Screw M3 cs cap x 12mm
- 2 Washer M3 x 7mm x 0.5mm
- 1 Wire blue 30/0.25mm strands, length 150mm - not shown

Qty Description

2 Wire brown 30/0.25mm strands, length 150mm - not shown

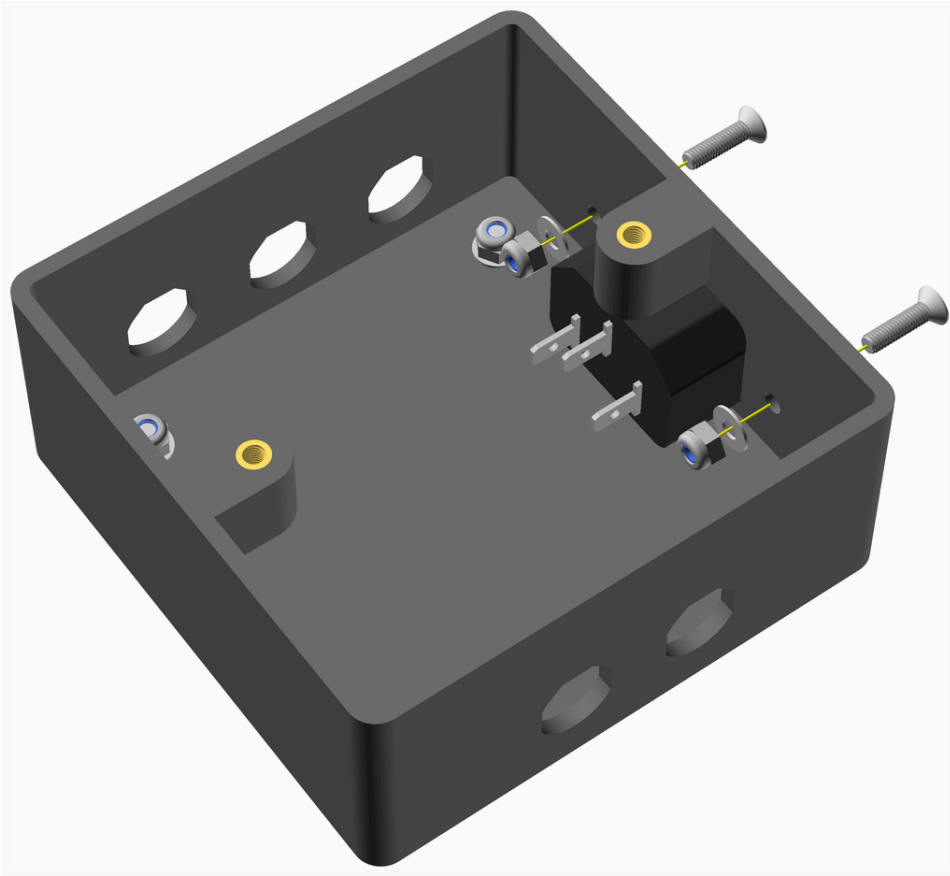
1 Wire green & yellow 30/0.25mm strands, length 150mm - not shown

Sub-assemblies

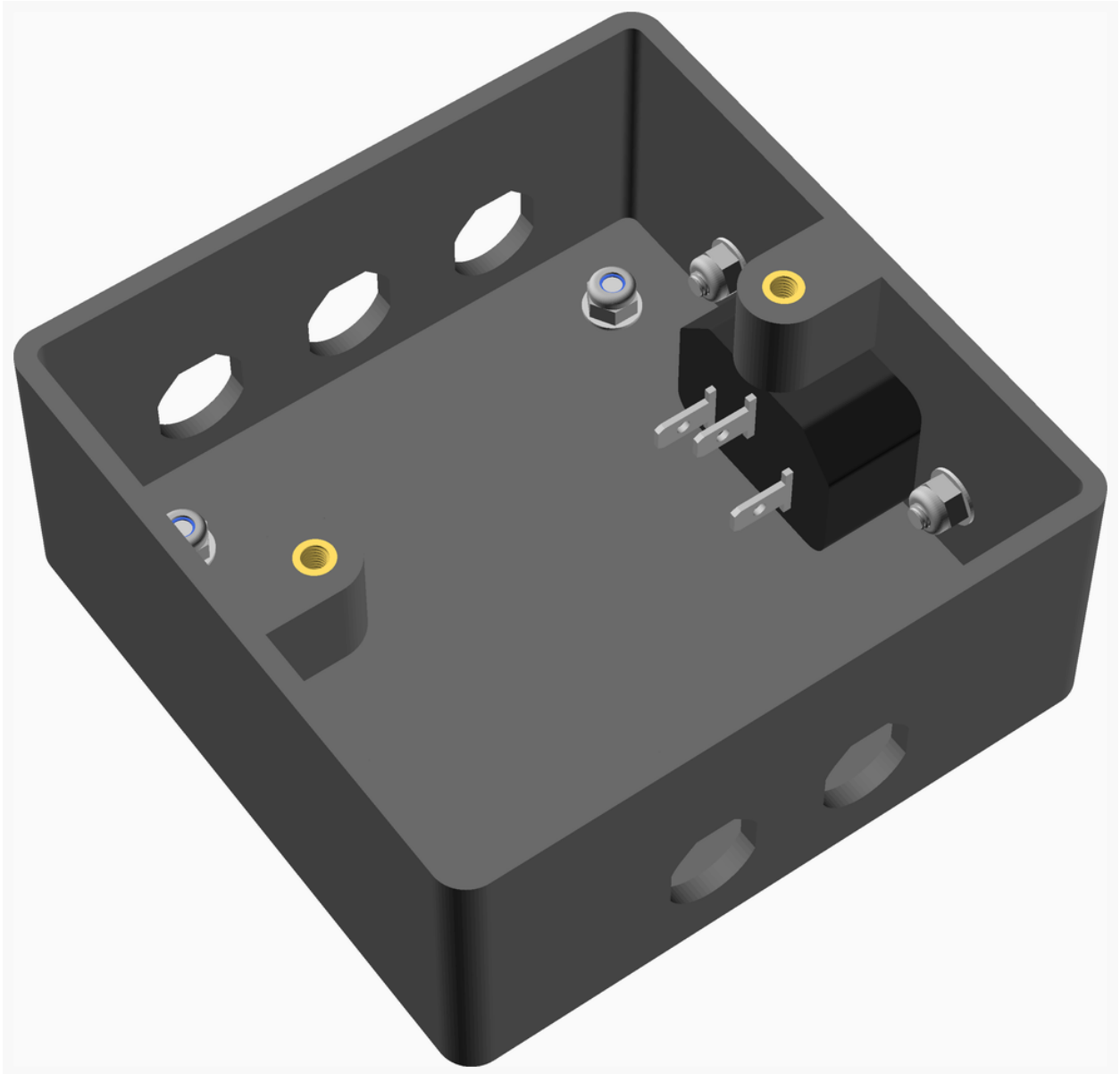
1 x feet_assembly



Assembly instructions



1. Solder wires to the IEC terminals: -
 - Use wire rated for 13A, e.g. 1.5mm², the easiest source is stripping 13A rated flex.
 - Attach one green & yellow to the earth, one blue to neutral and two brown to the live.
 - The earth, neutral and one of the live wires should be long enough to protrude through the appropriate 4mm jack holes far enough to be able to strip and solder them to the jacks.
 - The second brown needs to be long enough to reach the socket.
2. Cover the the joints with heatshrink sleeving and shrink it with a hot air gun.
3. Attach the IEC inlet using two 12mm M3 countersunk cap screws, washers and nyloc nuts on the back.



[Top](#)

Main Assembly

Vitamins

Qty Description

2 4mm shielded jack socket blue

1 4mm shielded jack socket brown

Qty Description

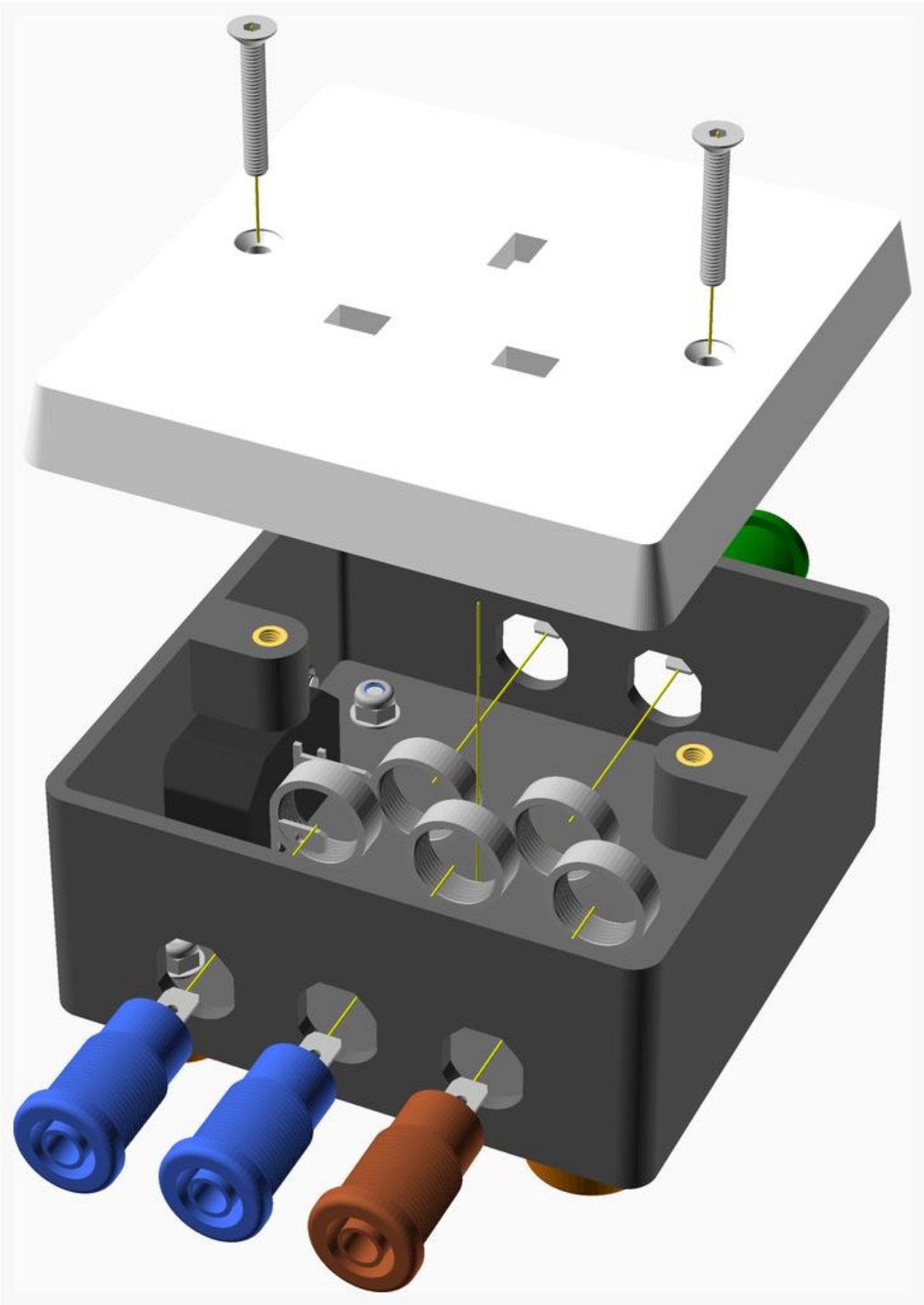
- 2 4mm shielded jack socket green
- 3 Ferrule for 1.5mm² wire - not shown
- 5 Heatshrink sleeving ID 3.2mm x 15mm - not shown
- 1 Mains socket 13A
- 2 Screw M3 cs cap x 20mm
- 1 Wire blue 30/0.25mm strands, length 150mm - not shown
- 1 Wire green & yellow 30/0.25mm strands, length 150mm - not shown

Sub-assemblies

1 x mains_in_assembly

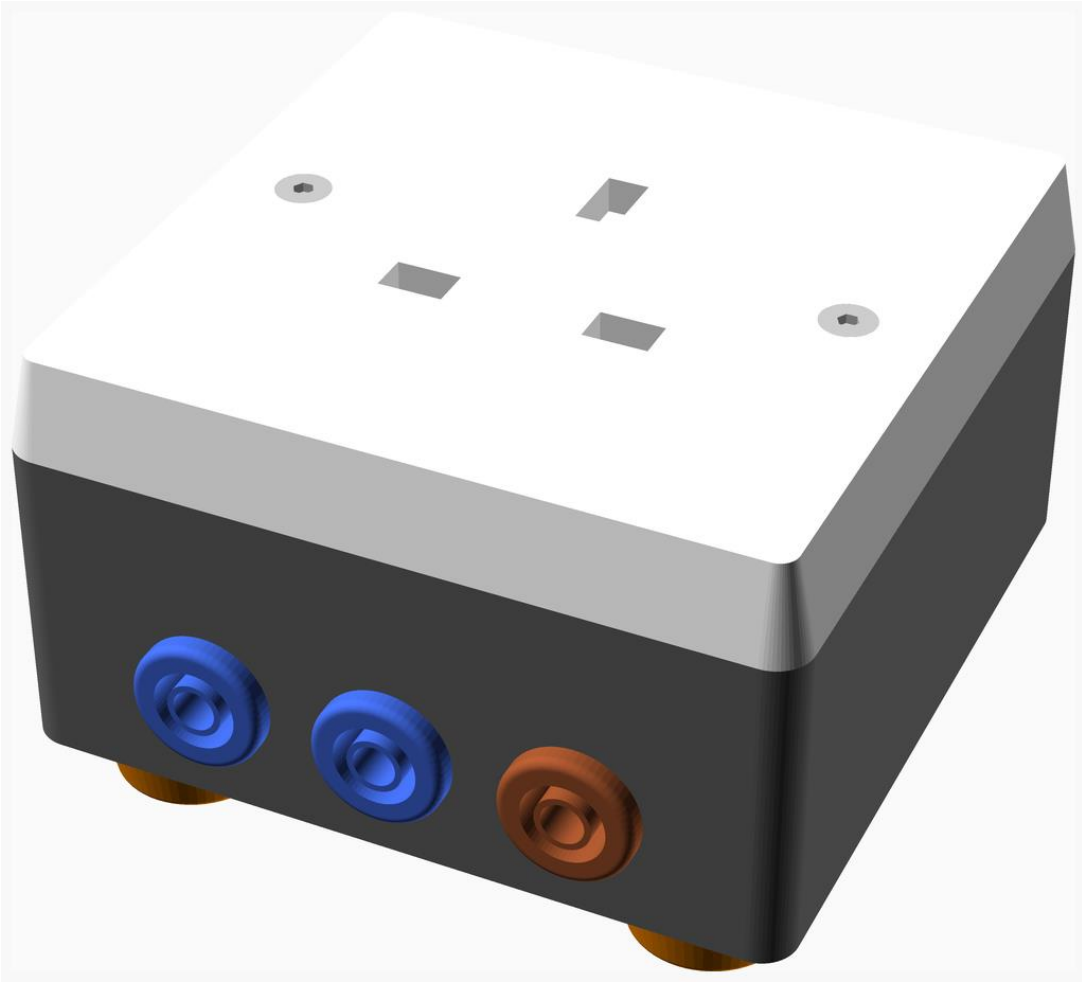


Assembly instructions





1. Put the blue wire from the IEC inlet through the bottom left jack hole, strip it, add heatshrink sleeving and solder it to one of the blue jack sockets.
2. Put the green & yellow wire through the top left jack hole, add heatshrink sleeving and solder it to one of the green jack sockets.
3. Put the thin brown wire the bottom right jack hole, add heatshrink sleeving and solder it to the brown jack socket.
4. Shrink the heatshrink and screw in the three jack sockets.
5. Solder a 13A green & yellow wire to the remaining green jack socket, long enough to reach the 13A socket. Add heatshrink and fit it to the top right jack hole.
6. Solder a 13A blue wire to the remaining blue jack socket, long enough to reach the 13A socket. Add heatshrink and fit to the bottom middle jack hole.
7. Crimp appropriate ferrules to the three wires and connect them to the 13A socket.
8. Screw the socket onto the top of the case using two 20mm M3 countersunk cap screws.



[Top](#)