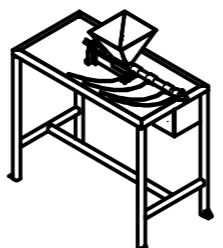
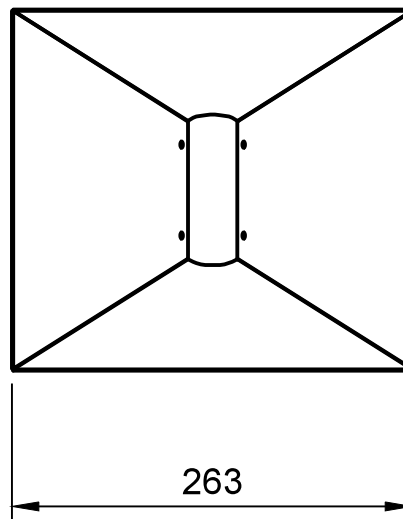
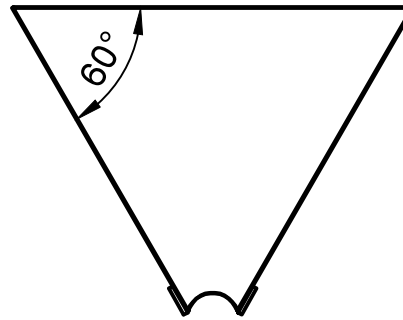
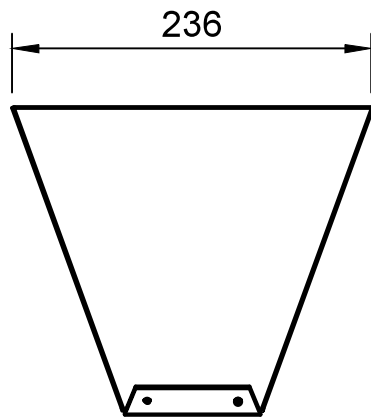


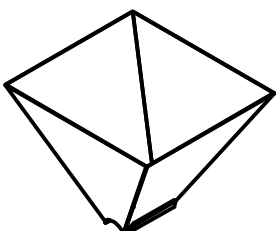
1115

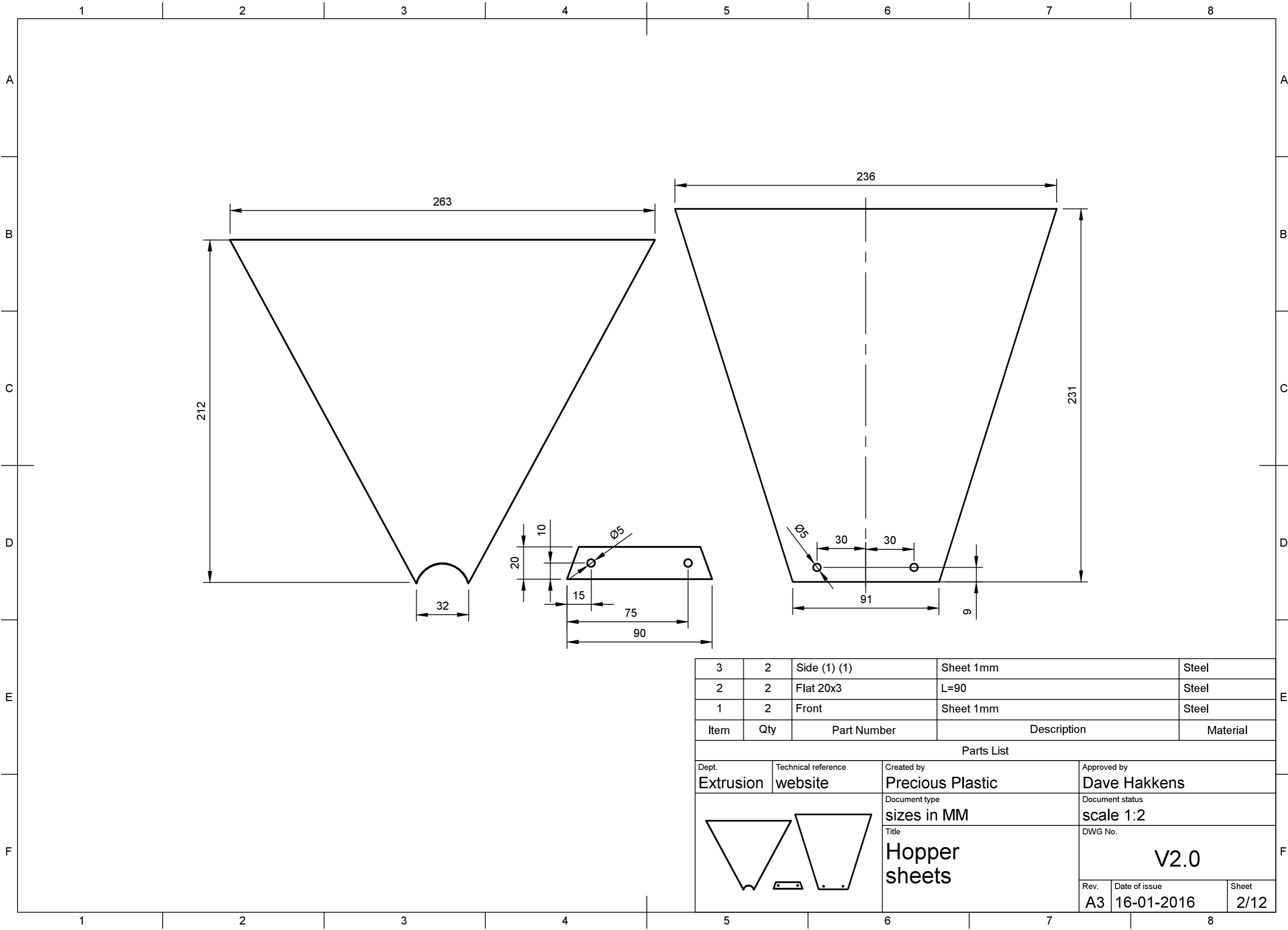
500

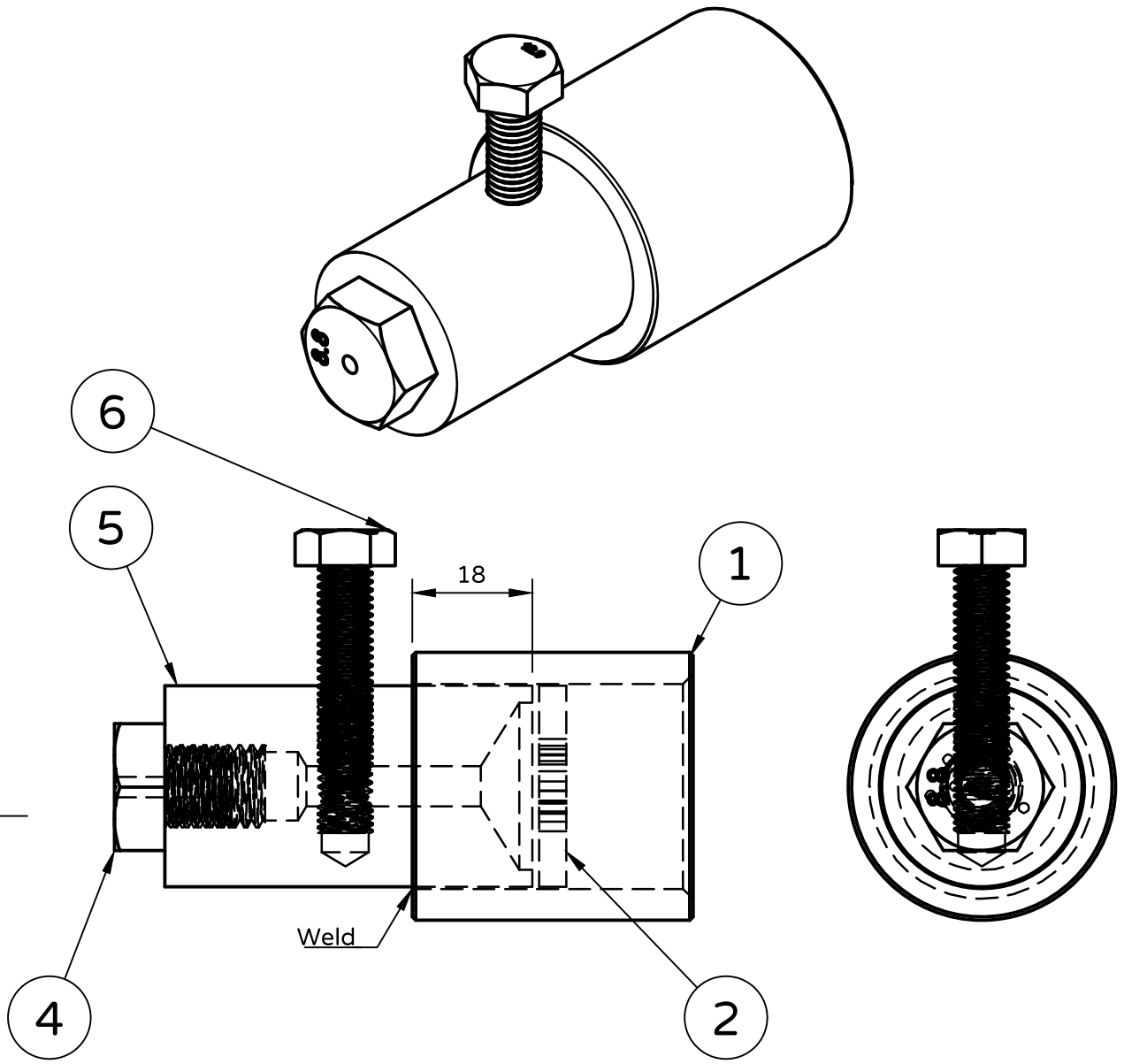
1017

Dept. Extrusion	Technical reference website	Created by Precious Plastic	Approved by Dave Hakkens
		Document type sizes in MM	Document status scale 1:16
		Title Overview	DWG No. V2.0
Rev. A3	Date of issue 16-01-2016	Sheet 0/12	



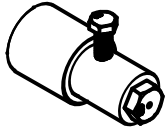
Dept. Extrusion	Technical reference website	Created by Precious Plastic	Approved by Dave Hakkens	
		Document type sizes in MM	Document status scale 1:5	
		Title Hopper	DWG No. V2.0	
		Rev. A4	Date of issue 16-01-2016	Sheet 1/12





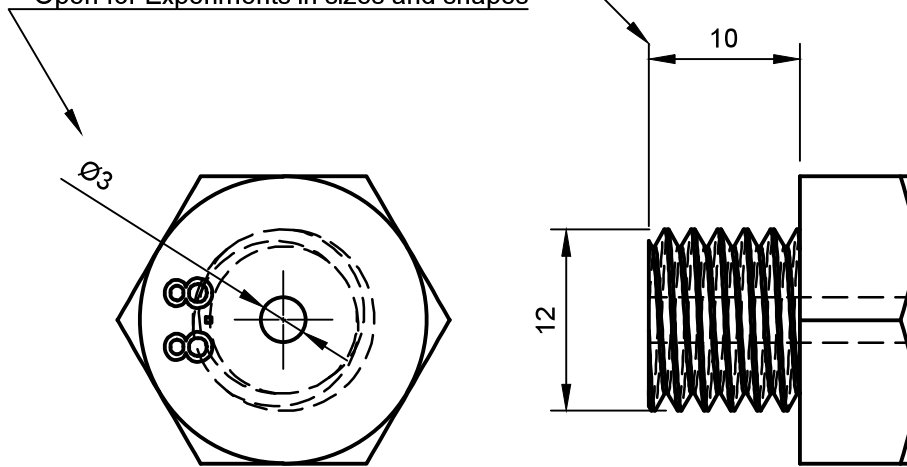
6	1	M8x30		Steel
5	1	Round 30	L=55	Steel
4	1	M12x10		Steel
2	1	Filter Alu R.30	L=4	Aluminum
1	1	1" BSP fitting Female		Steel
Item	Qty	Part Number	Description	Material

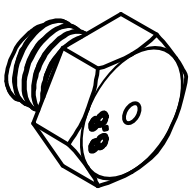
Parts List

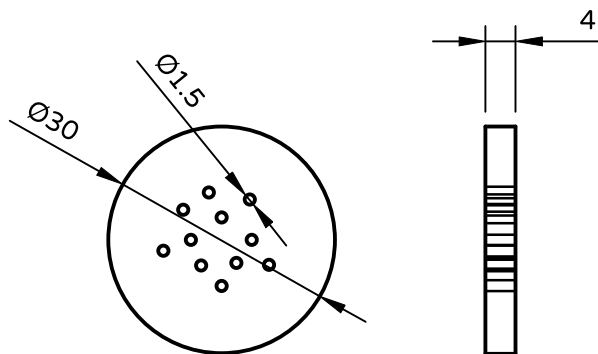
Dept. Extrusion	Technical reference website	Created by Precious Plastic	Approved by Dave Hakkens
	Document type sizes in MM	Document status scale 2:1	V2.0
	Title Nozzle assembled	DWG No.	
	Rev. A4	Date of issue 16-01-2016	Sheet 4/12

Cut a standard
Full threaded M12
as short as possible
10mm does the job

Open for Experiments in sizes and shapes



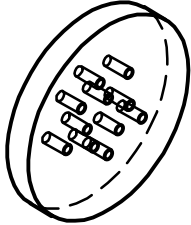
Dept. Extrusion	Technical reference website	Created by Precious Plastic	Approved by Dave Hakkens
	Document type sizes in MM	Document status scale 2:1	DWG No.
	Title Nozzle Screw	V2.0	
		Rev. A4	Date of issue 16-01-2016

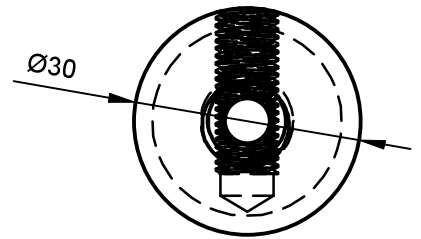
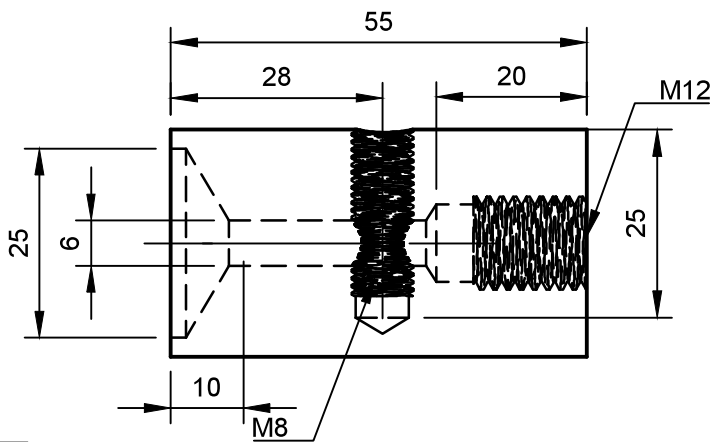


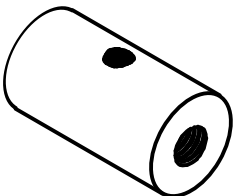
This filter is optionally.
 Its to make sure everything that comes out of the extrusion is smooth and molten.
 Use this as the output contains chuncks of plastic.

There is a 6mm Hole in in the Nozzle (equals 28 mm²)
 A 1.5 mm drilled filtering gap is 1.7mm².

This means you need at least 16 holes to not slow down your output

Dept. Extrusion	Technical reference website	Created by Precious Plastic	Approved by Dave Hakkens	
		Document type sizes in MM	Document status scale 1:1	
		Title Nozzle Filter	DWG No. V2.0	
		Rev. A4	Date of issue 16-01-2016	Sheet 6/12



Dept. Extrusion	Technical reference website	Created by Precious Plastic	Approved by Dave Hakkens
	Document type sizes in MM	Document status scale 1:1	V2.0
	Title Nozzle Flow Adjuster	DWG No.	
	Rev. A4	Date of issue 16-01-2016	Sheet 7/12

1 2 3 4 5 6 7 8

A

B

C

D

E

F

A

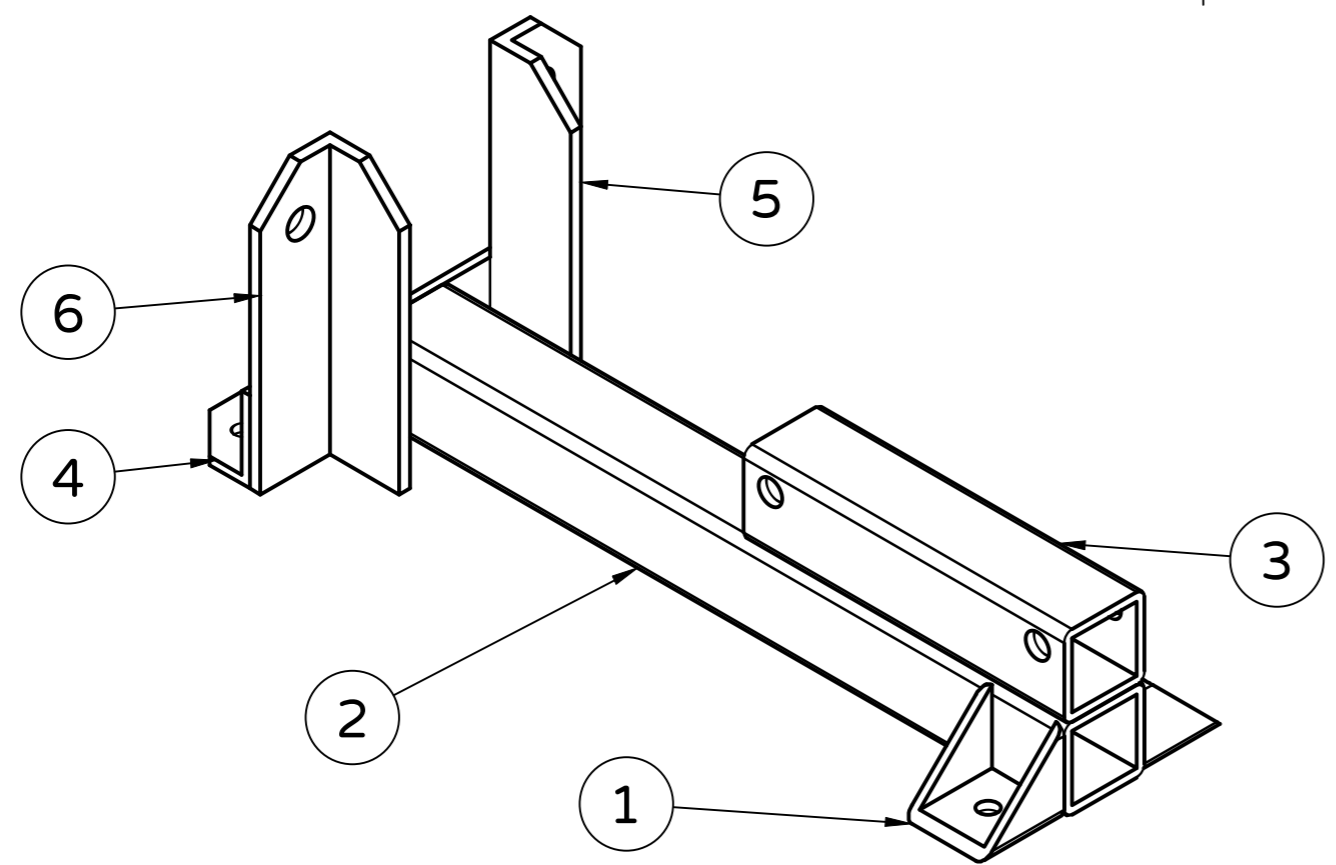
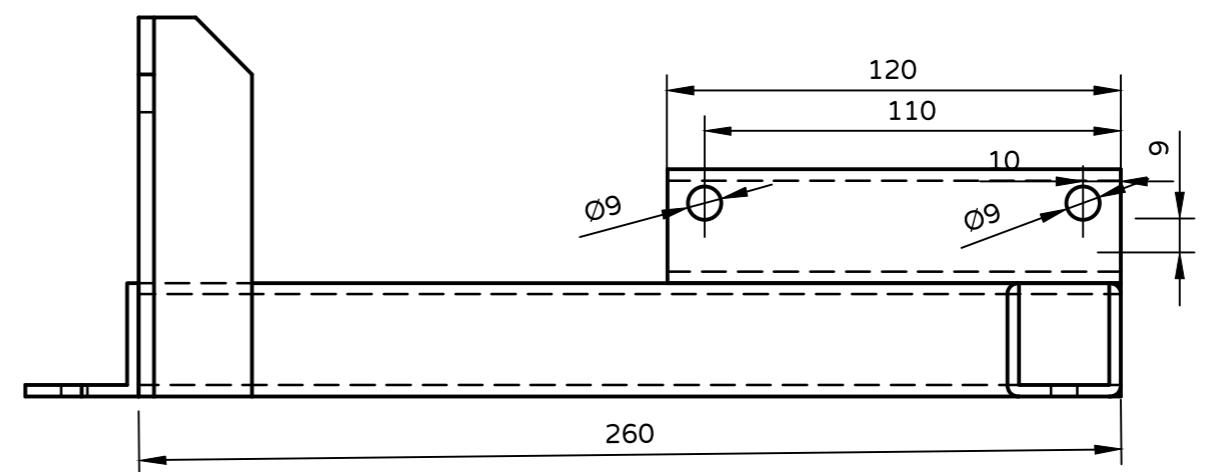
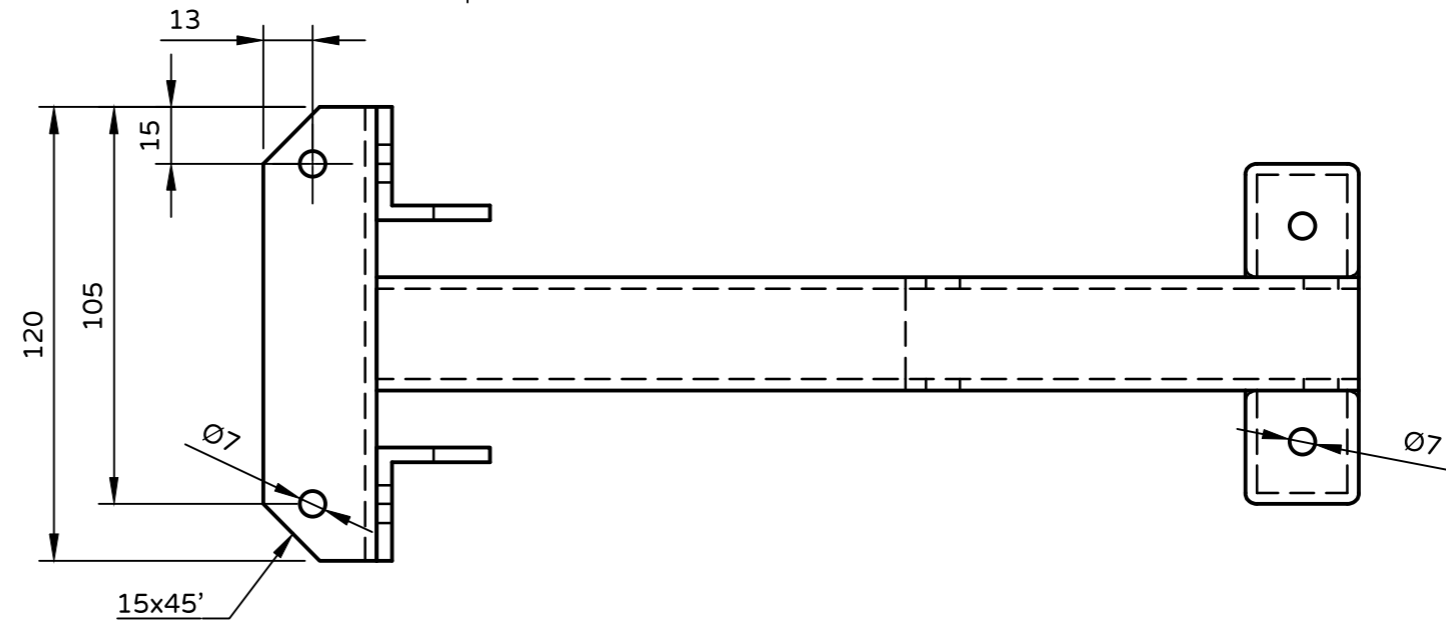
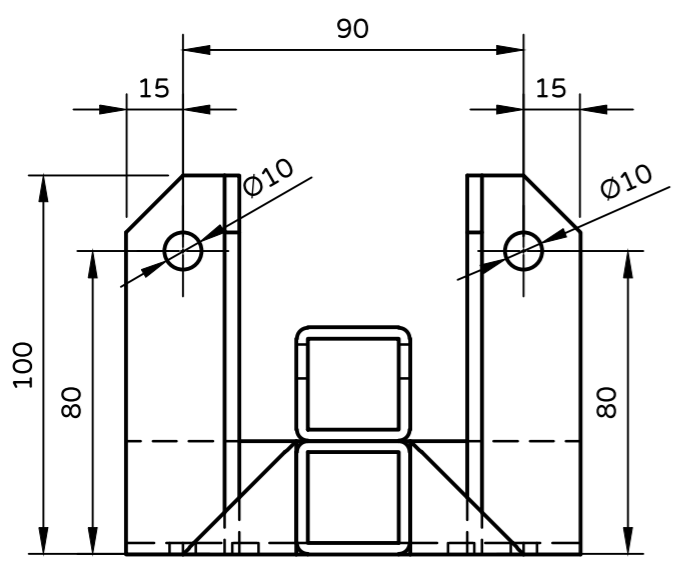
B

C

D

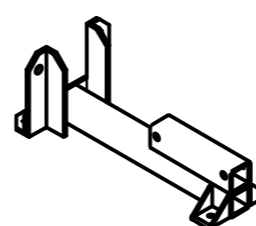
E

F

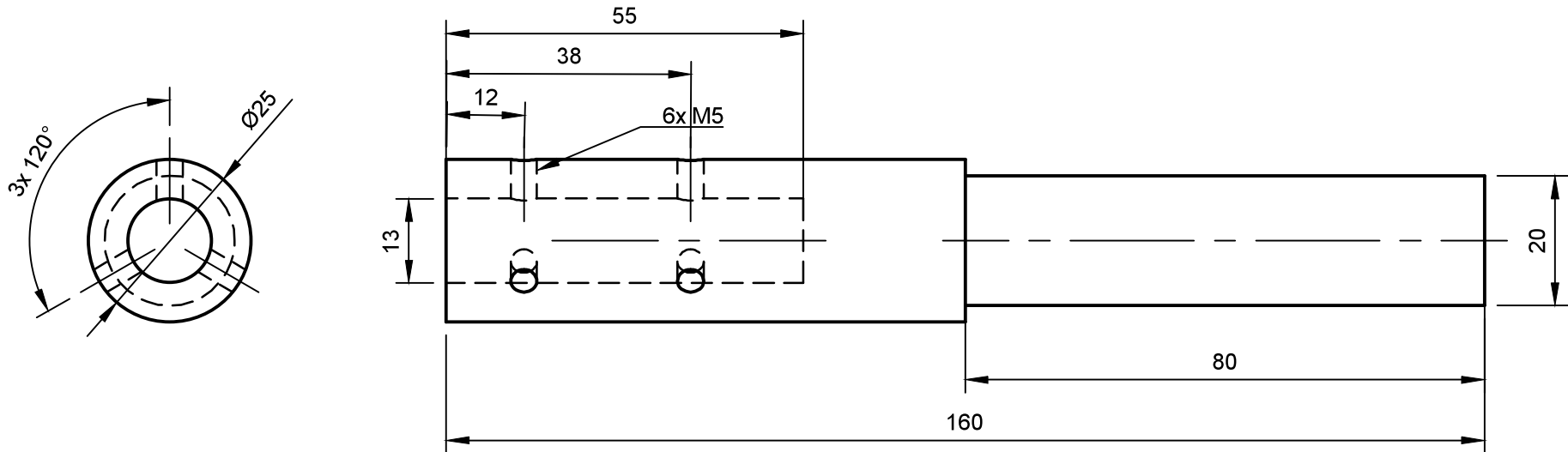


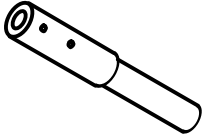
6	1	Angle 30x3 (2)	L=100	Steel
5	1	Angle 30x3 (1)	L=100	Steel
4	1	Angle 30x3	L=120	Steel
3	1	Tube 30x30x3	L=120	Steel
2	1	Tube 30x30x3 (1)	L=260	Steel
1	2	Tube 30x30x3 (2)		Steel
Item	Qty	Part Number	Description	Material

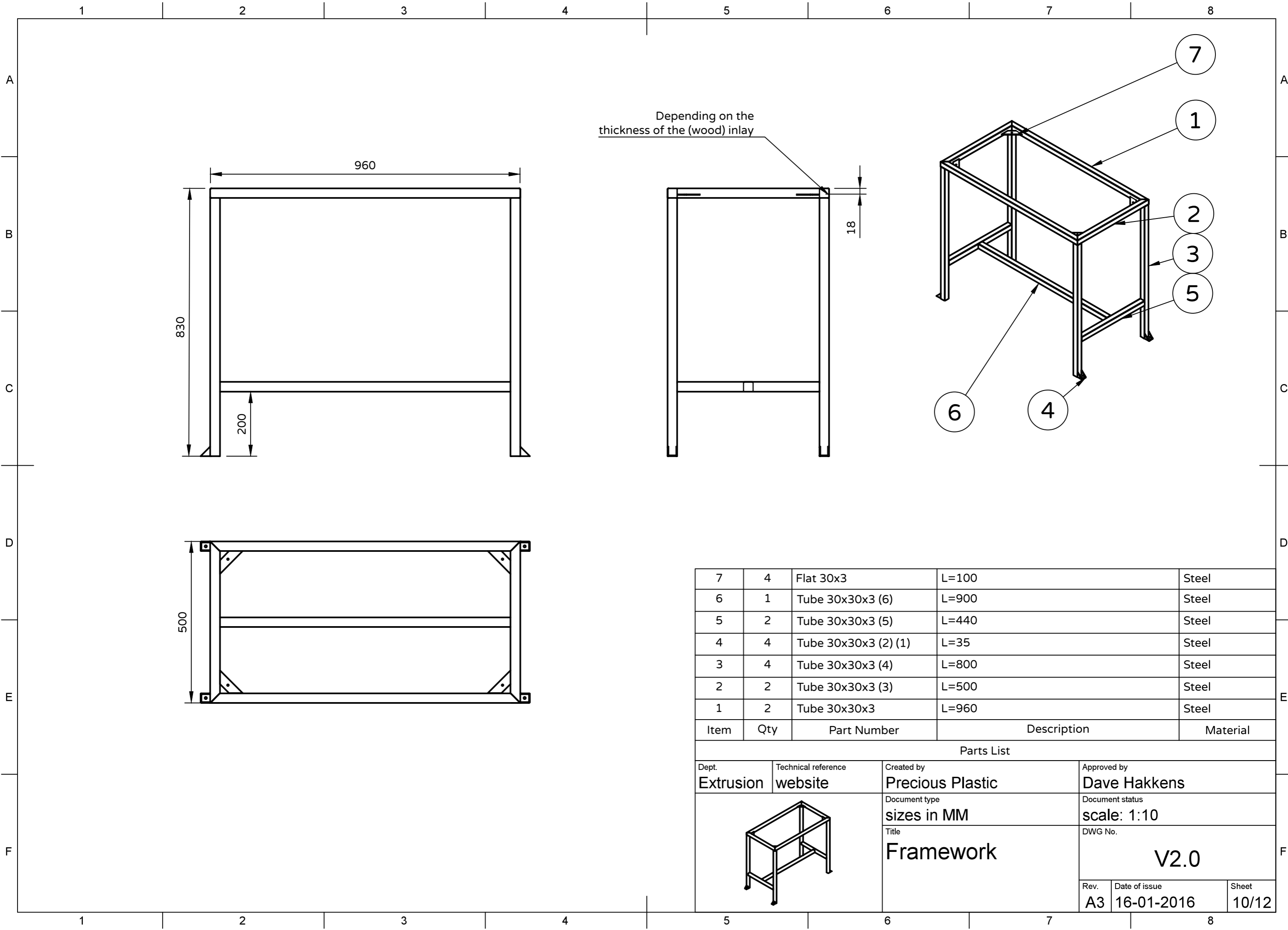
Parts List

Dept. Extrusion	Technical reference website	Created by Precious Plastic	Approved by Dave Hakkens
		Document type sizes in MM	Document status scale 1:2
		Title Barrel Holder	DWG No. V2.0
Rev. A3	Date of issue 16-01-2016	Sheet 8/12	

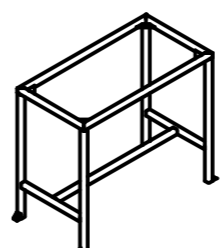
1 2 3 4 5 6 7 8

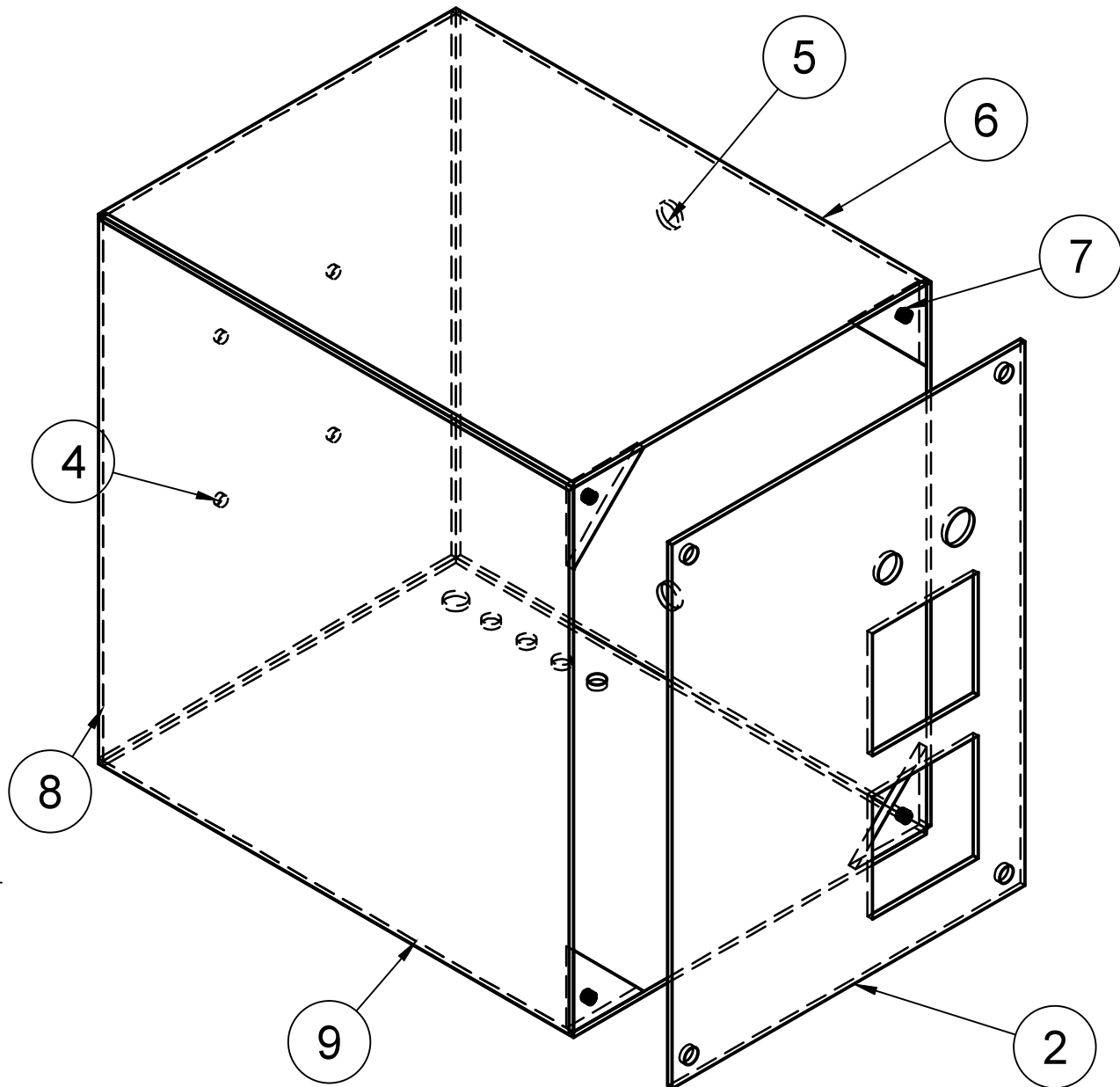


1	1	Round 25	L=160	Steel
Item	Qty	Part Number	Description	Material
Parts List				
Dept. Extrusion	Technical reference website	Created by Precious Plastic	Approved by Dave Hakkens	
		Document type sizes in MM	Document status scale: 1:1	
		Title Barrel holder bearing shaft	DWG No. V2.0	
		Rev. A4	Date of issue 20-01-2016	Sheet 9/12



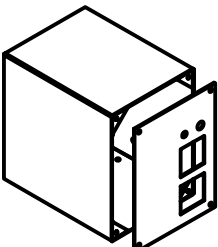
7	4	Flat 30x3	L=100	Steel
6	1	Tube 30x30x3 (6)	L=900	Steel
5	2	Tube 30x30x3 (5)	L=440	Steel
4	4	Tube 30x30x3 (2) (1)	L=35	Steel
3	4	Tube 30x30x3 (4)	L=800	Steel
2	2	Tube 30x30x3 (3)	L=500	Steel
1	2	Tube 30x30x3	L=960	Steel
Item	Qty	Part Number	Description	Material

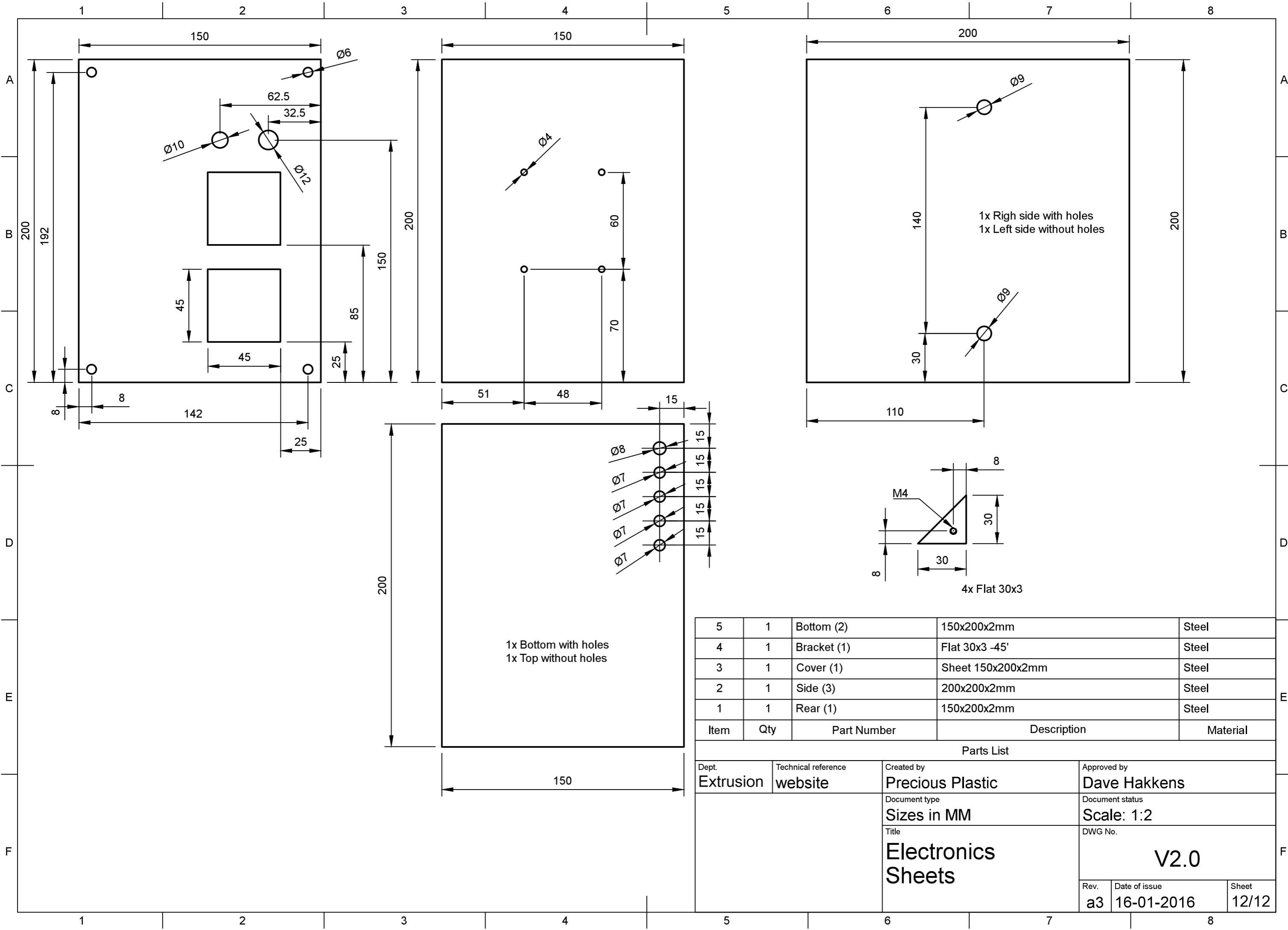
Parts List			
Dept. Extrusion	Technical reference website	Created by Precious Plastic	Approved by Dave Hakkens
		Document type sizes in MM	Document status scale: 1:10
		Title Framework	DWG No. V2.0
Rev. A3	Date of issue 16-01-2016	Sheet 10/12	



9	1	Bottom	150x200x2mm	Steel
8	1	Side (2)	200x200x2mm	Steel
7	4	Bracket	Flat 30x3 -45'	Steel
6	1	Top	150x200x2mm	Steel
5	1	Side	200x200x2mm	Steel
4	1	Rear	150x200x2mm	Steel
2	1	Cover	Sheet 150x200x2mm	Steel
Item	Qty	Part Number	Description	Material

Parts List

Dept. Extrusion	Technical reference website	Created by Precious Plastic	Approved by Dave Hakkens
	Document type sizes in MM	Document status scale 1:2	DWG No.
	Title Electronics metal box	V2.0	
	Rev. A4	Date of issue 16-01-2016	Sheet 11/12



Parts List				
Item	Qty	Part Number	Description	Material
5	1	Bottom (2)	150x200x2mm	Steel
4	1	Bracket (1)	Flat 30x3 -45'	Steel
3	1	Cover (1)	Sheet 150x200x2mm	Steel
2	1	Side (3)	200x200x2mm	Steel
1	1	Rear (1)	150x200x2mm	Steel

Dept. Extrusion	Technical reference website	Created by Precious Plastic	Approved by Dave Hakkens
		Document type Sizes in MM	Document status Scale: 1:2
		Title Electronics Sheets	DWG No. V2.0
Rev. a3	Date of issue 16-01-2016	Sheet 12/12	

