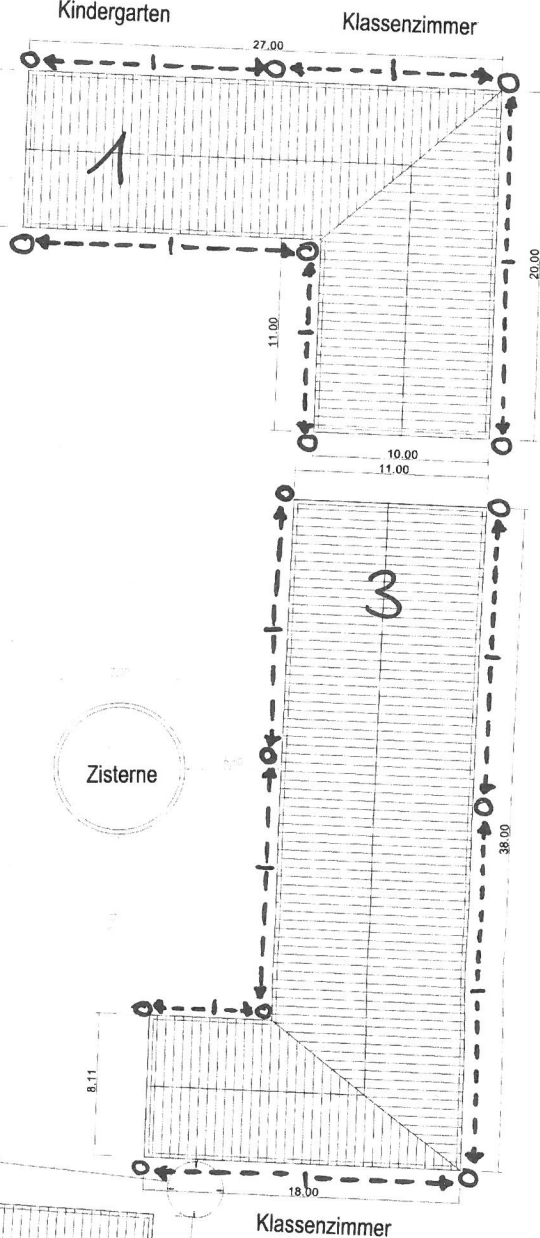
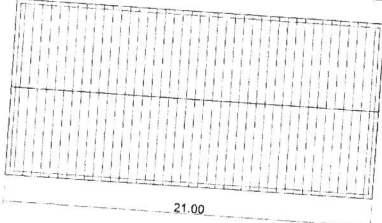
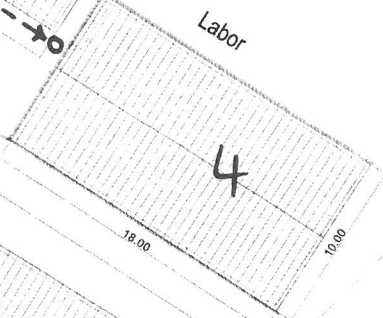
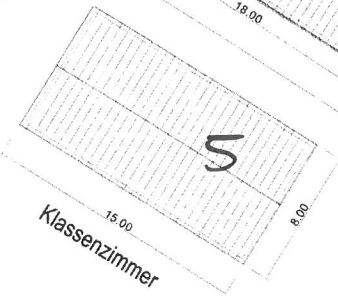
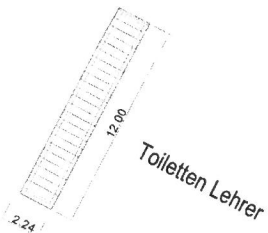


FALLROHRE MINDESTENS (max. 20m Distanz)
DOWNPIPES AT THE MINIMUM (max. 20m distance)



at least 9
downpipes
due to
geometry of
the building
*mindestens
9 Fallrohre
(Gebäude-
geometrie)*



at least 7
downpipes
due to
geometry of
the building

*mindestens
7 Fallrohre
(Gebäude-
geometrie)*

*mindestens
8 Fallrohre
(Gebäude-
geometrie)*

at least 8
downpipes
due to
geometry of
the building

LEGENDE / KEY

- o - Fallrohr / downpipe
- > - Neigung der Dachrinne / slope of rain gutter

