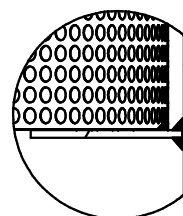
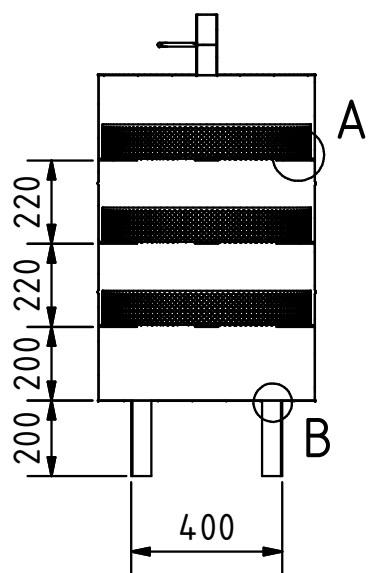


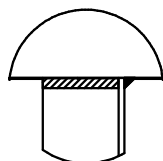
A (1 : 5)



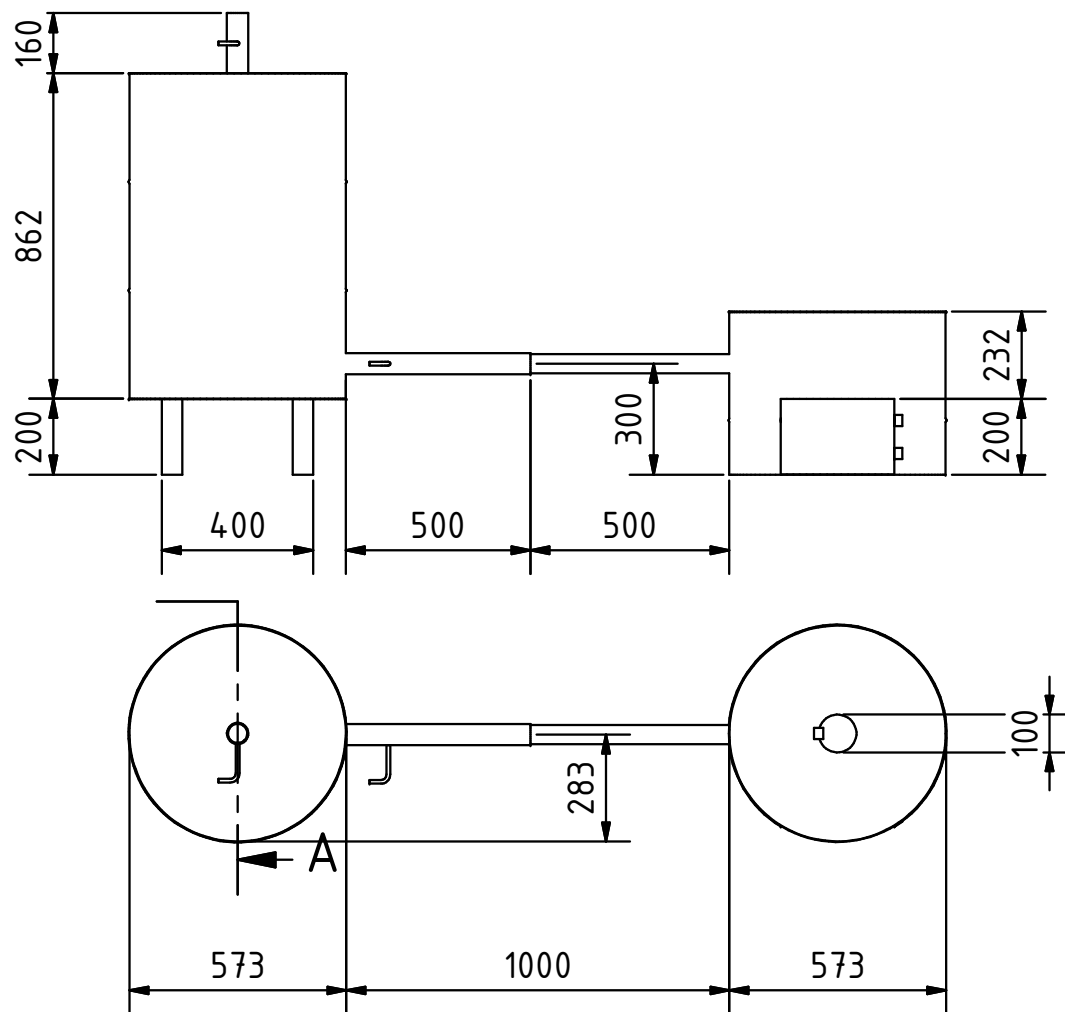
A-A (1 : 20)



A (1 : 5)



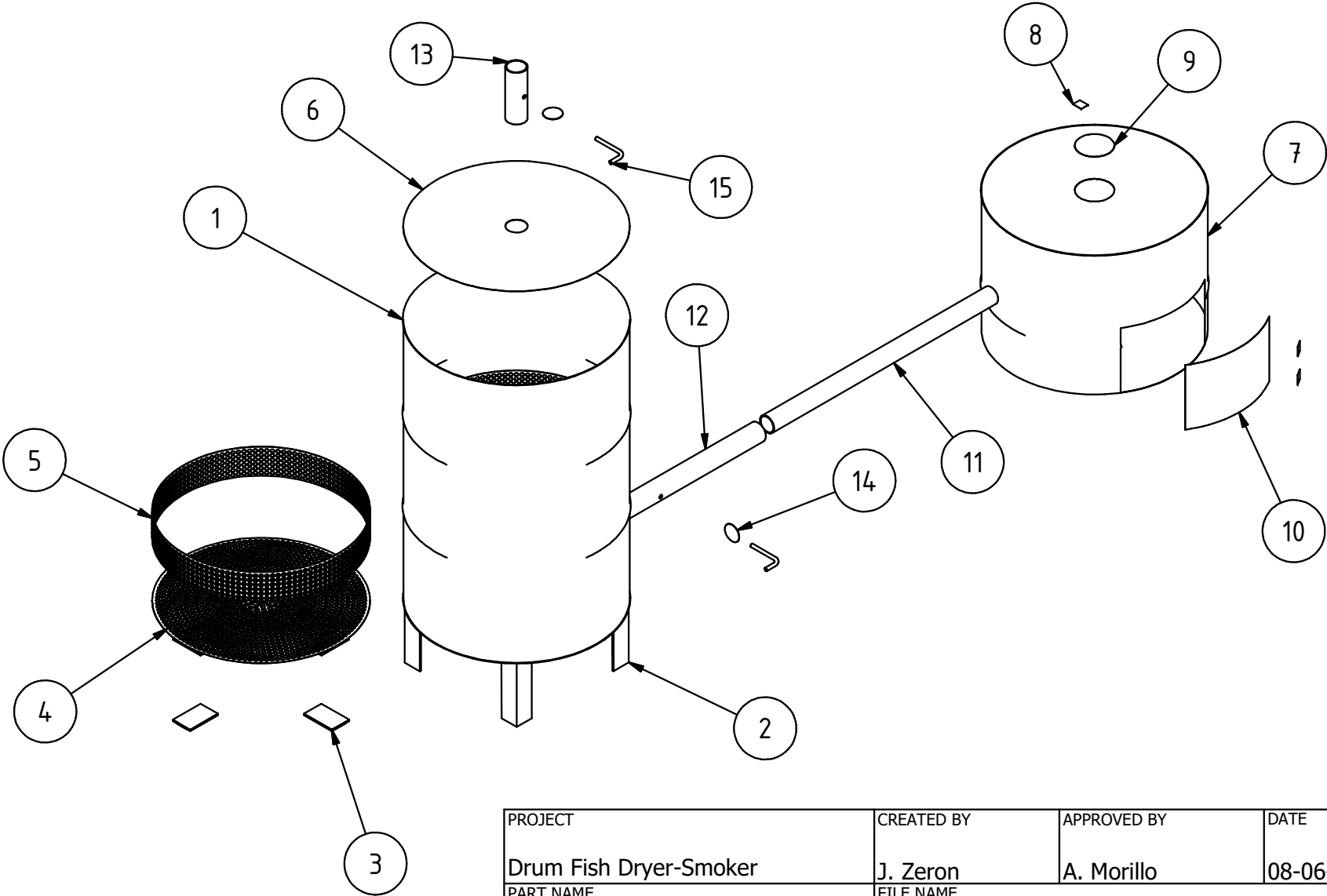
ELEVATION (1 : 20)




Note: all units are in mm

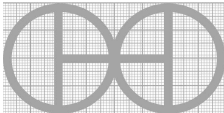
PROJECT	CREATED BY	APPROVED BY	DATE	VERSION
Drum Fish Dryer-Smoker	J. Zeron	A. Morillo	08-06-2021	1.0
PART NAME	FILE NAME	PART CODE		
3d views	ilo_dfds_dum-fish-dryer-smoker.iam	A1		
DEVELOPED BY	REDESIGNED BY	DOC. TYPE	MATERIAL	QUANTITY
		ASSEMBLY		1
INTERNATIONAL LABOUR OFFICE	OHO e.V.	LICENCE	SCALE	SHEET
		CC-BY-SA 4.0	1:20	1 / 17

EXPLOSION (1 : 15)

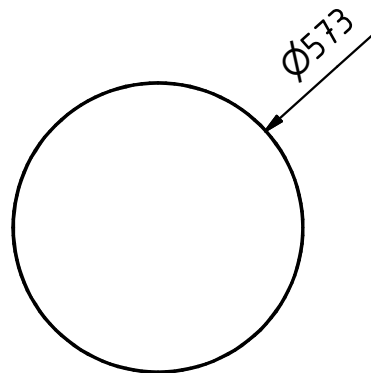
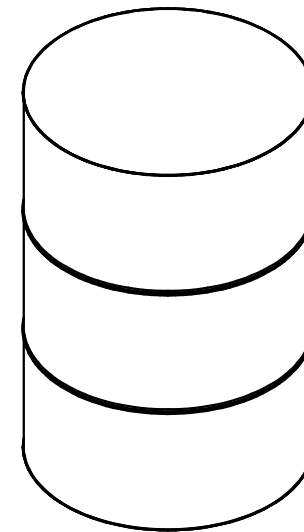
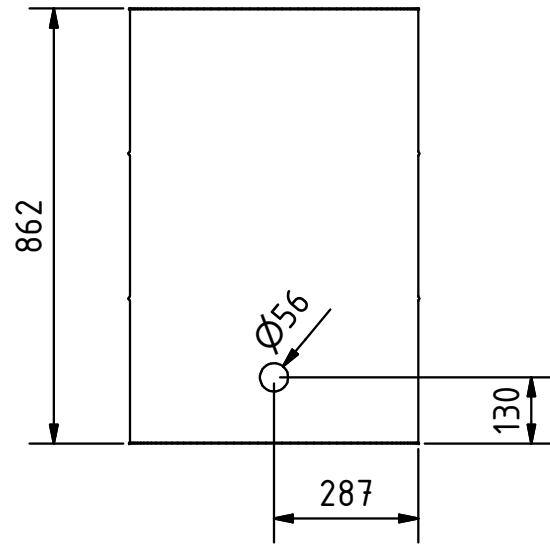


PROJECT		CREATED BY		APPROVED BY	DATE	VERSION
Drum Fish Dryer-Smoker		J. Zeron		A. Morillo	08-06-2021	1.0
PART NAME		FILE NAME				PART CODE
Exploded 3D View		ilo_dfds_dum-fish-dryer-smoker.ipn				A2
DEVELOPED BY		REDESIGNED BY		DOC. TYPE	MATERIAL	QUANTITY
INTERNATIONAL LABOUR OFFICE		 OHO e.V.		ASSEMBLY		1
				LICENCE	SCALE	SHEET
				CC-BY-SA 4.0	1:15	2 / 17

PART LIST							
POS	POS.OLD	QTY	PART NAME	FILE NAME	PART TYPE	SPECIFICATIONS	SHEET
A1	-	-	3D Views	manual-fuel-briquette-press.iam	ASSEMBLY	-	1
A2	-	-	Explode 3D View	ilo_dfds_dum-fish-dryer-smoker.ipn	ASSEMBLY	-	2
B1	-	-	Part List	ilo_dfds_dum-fish-dryer-smoker.csv	-	-	3
1	-	1	Smoker drum	Smoker drum.ipt	Production	Rolled steel	4
2	-	4	Foot	Foot.ipt	Production	Carbon steel angle 50x50x4 mm grade A42 L=20 cm	5
3	-	12	Tray base	Tray base.ipt	Production	Carbon steel platen 2" PS-25	6
4	-	3	Tray A	Tray A.ipt	Production	Perfored metal, thinckness 1-2 mm	7
5	-	3	Tray B	Tray B.ipt	Production	Perfored metal, thinckness 1-2 mm	8
6	-	1	Lid	Lid.ipt	Production	Metal drum scrap	9
7	-	1	Fire drum	Fire drum.ipt	Production	Metal drum scrap	10
8	-	3	Hinge	-	Buy	Brass 1", riveted	-
9	-	1	Upper nozzle	Upper nozzle.ipt	Production	Metal drum scrap	11
10	-	1	Side entrance	Side entrance.ipt	Production	Metal drum scrap	12
11	-	1	Tube A	Tube A.ipt	Production	2" Black iron L=80cm	13
12	-	1	Tube B	Tube B.ipt	Production	2 1/4" Black iron L=50cm	14
13	-	1	Tube C	Tube C.ipt	Production	2 1/4" Black iron L=16cm	15
14	-	2	Nozzle	Nozzle.ipt	Production	Sheet metal	16
15	-	2	Bar	Bar.ipt	Production	Flat bar 3/8"	17

PROJECT		CREATED BY	APPROVED BY	DATE	VERSION
Drum Fish Dryer-Smoker		J. Zeron	A. Morillo	08-06-2021	1.0
PART NAME		FILE NAME			PART CODE
PART LIST		ilo_dfds_dum-fish-dryer-smoker.csv			B1
DEVELOPED BY		REDESIGNED BY	DOC. TYPE	MATERIAL	QUANTITY
			PART LIST		
			LICENCE	SCALE	SHEET
INTERNATIONAL LABOUR OFFICE		OHO e.V.	CC-BY-SA 4.0		3 /17

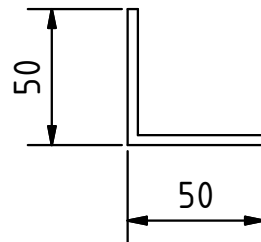
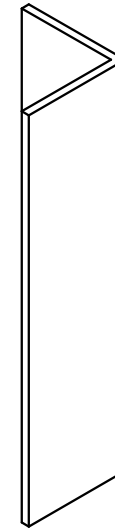
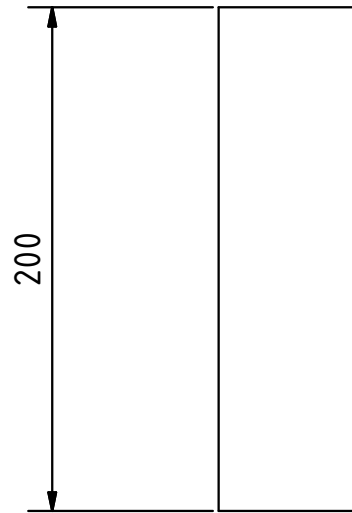
ELEVATION (1 : 15)



Note: all units are in mm

PROJECT	CREATED BY	APPROVED BY	DATE	VERSION
Drum Fish Dryer-Smoker	J. Zeron	A. Morillo	08-06-2021	1.0
PART NAME	FILE NAME	PART CODE		
Smoker Drum	Smoker Drum.ipt	1		
DEVELOPED BY	REDESIGNED BY	DOC. TYPE	MATERIAL	QUANTITY
INTERNATIONAL LABOUR OFFICE		PART	Rolled steel	1
		LICENCE	SCALE	SHEET
	OHO e.V.	CC-BY-SA 4.0	1:13	4 / 17

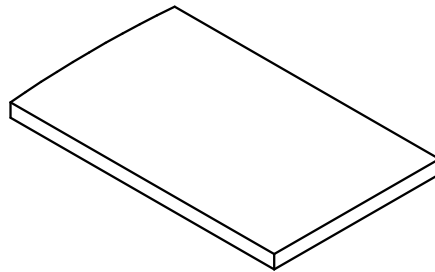
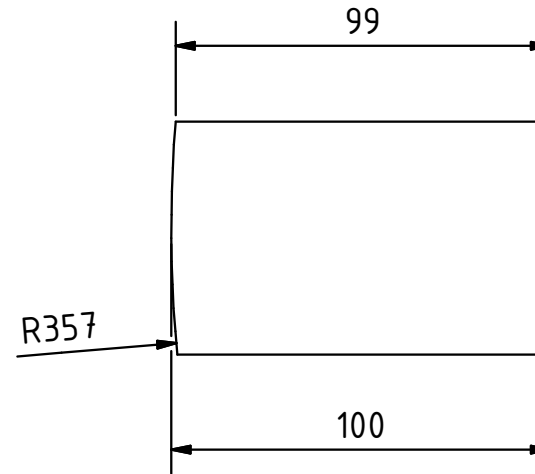
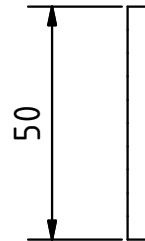
ELEVATION (1 : 3)



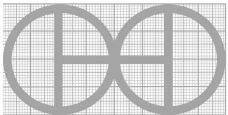
Note: all units are in mm

PROJECT	CREATED BY	APPROVED BY	DATE	VERSION
Drum Fish Dryer-Smoker	J. Zeron	A. Morillo	08-06-2021	1.0
PART NAME	FILE NAME	PART CODE		
Foot	Foot.ipt	2		
DEVELOPED BY	REDESIGNED BY	DOC. TYPE	MATERIAL	QUANTITY
INTERNATIONAL LABOUR OFFICE		PART	Carbon Steel	4
		LICENCE	SCALE	SHEET
	OHO e.V.	CC-BY-SA 4.0	1:3	5 /17

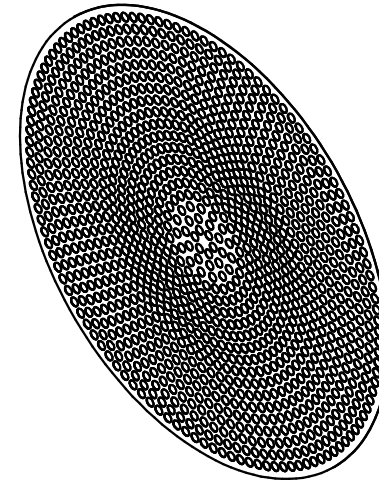
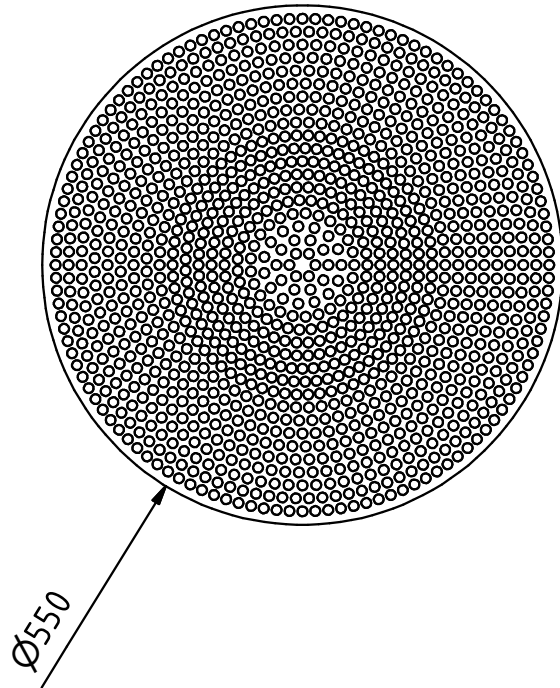
PLAN (1 : 2)



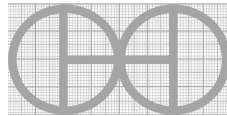
Note: all units are in mm

PROJECT		CREATED BY	APPROVED BY	DATE	VERSION
Drum Fish Dryer-Smoker		J. Zeron	A. Morillo	08-06-2021	1.0
PART NAME		FILE NAME			PART CODE
Tray Base		Tray Base.ipt			3
DEVELOPED BY	REDESIGNED BY		DOC. TYPE	MATERIAL	QUANTITY
INTERNATIONAL LABOUR OFFICE	 OHO e.V.		PART	Carbon Steel	12
			LICENCE	SCALE	SHEET
			CC-BY-SA 4.0	1:2	6 /17

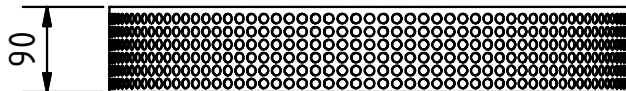
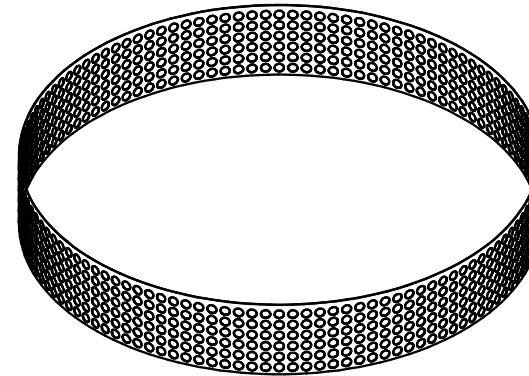
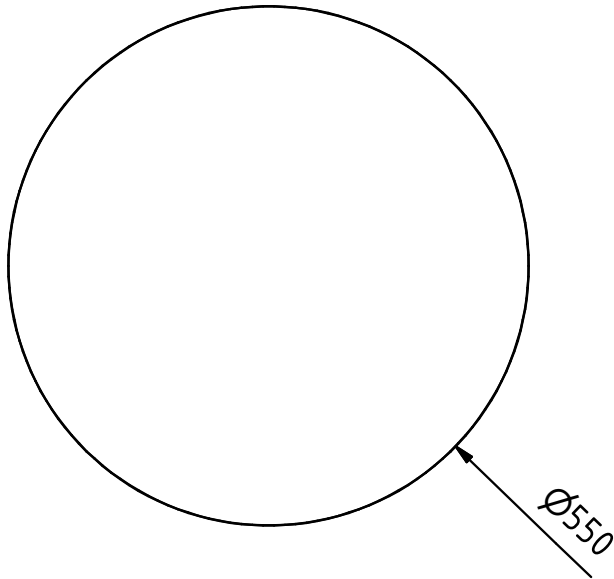
PLAN (1 : 8)



Note: all units are in mm

PROJECT		CREATED BY	APPROVED BY	DATE	VERSION
Drum Fish Dryer-Smoker		J. Zeron	A. Morillo	08-06-2021	1.0
PART NAME		FILE NAME			PART CODE
Tray A		Tray A.ipt			4
DEVELOPED BY	REDESIGNED BY		DOC. TYPE	MATERIAL	QUANTITY
INTERNATIONAL LABOUR OFFICE			PART	Perford metal	3
			LICENCE	SCALE	SHEET
	OHO e.V.		CC-BY-SA 4.0	1:8	7 /17

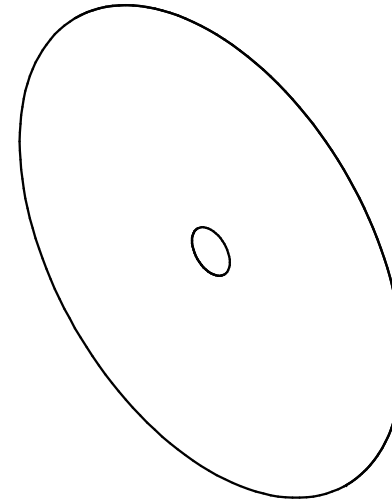
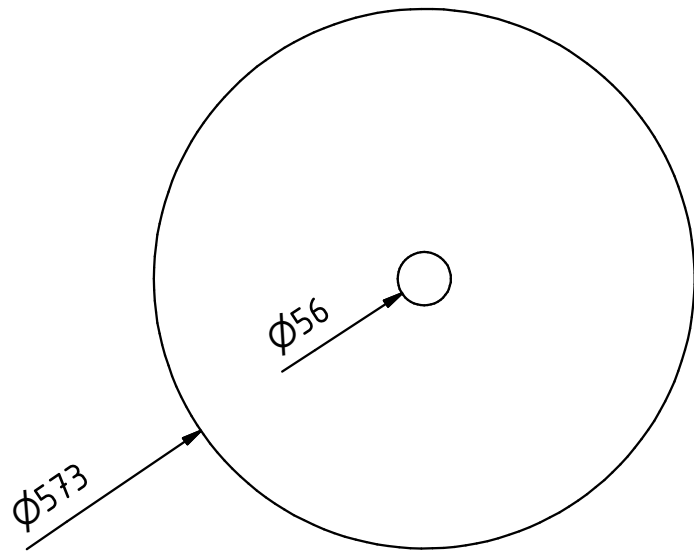
PLAN (1 : 8)



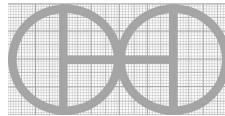
Note: all units are in mm

PROJECT		CREATED BY		APPROVED BY	DATE	VERSION
Drum Fish Dryer-Smoker		J. Zeron		A. Morillo	08-06-2021	1.0
PART NAME		FILE NAME				PART CODE
Tray B		Tray B.ipt				5
DEVELOPED BY		REDESIGNED BY		DOC. TYPE	MATERIAL	QUANTITY
INTERNATIONAL LABOUR OFFICE				PART	Perforated metal	3
				LICENCE	SCALE	SHEET
		OHO e.V.		CC-BY-SA 4.0	1:8	8 / 17

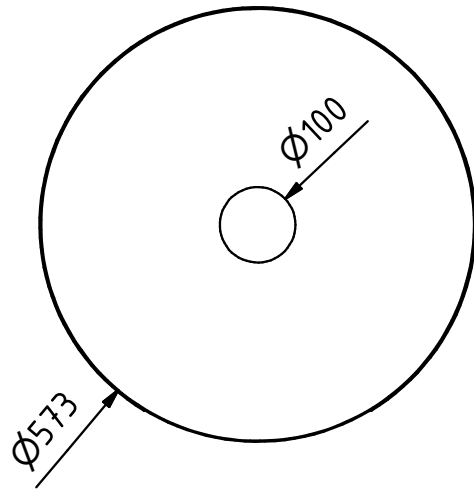
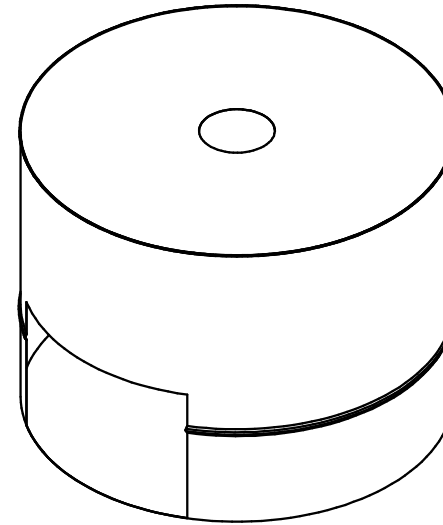
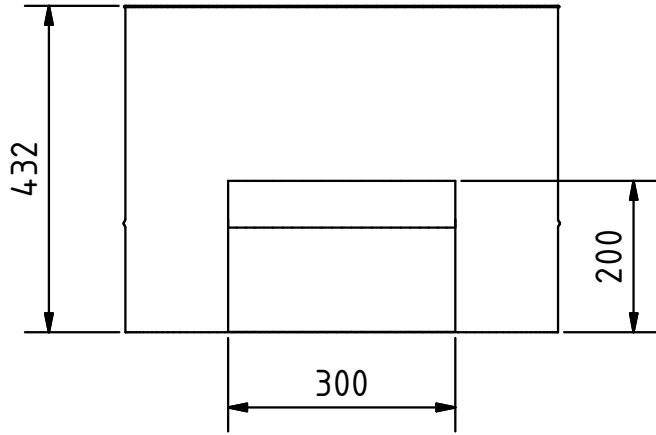
PLAN (1 : 8)



Note: all units are in mm

PROJECT		CREATED BY		APPROVED BY	DATE	VERSION
Drum Fish Dryer-Smoker		J. Zeron		A. Morillo	08-06-2021	1.0
PART NAME		FILE NAME				PART CODE
Lid		Lid.ipt				6
DEVELOPED BY		REDESIGNED BY		DOC. TYPE	MATERIAL	QUANTITY
INTERNATIONAL LABOUR OFFICE				PART	Metal Drum Scrap	1
				LICENCE		SHEET
		OHO e.V.		CC-BY-SA 4.0	1:8	9 / 17

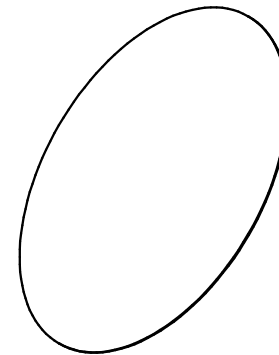
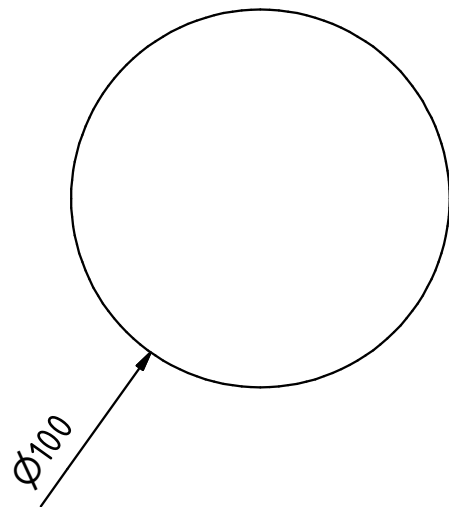
ELEVATION (1 : 10)



Note: all units are in mm

PROJECT	CREATED BY	APPROVED BY	DATE	VERSION
Drum Fish Dryer-Smoker	J. Zeron	A. Morillo	08-06-2021	1.0
PART NAME	FILE NAME	PART CODE		
Fire Drum	Fire Drum.ipt	7		
DEVELOPED BY	REDESIGNED BY	DOC. TYPE	MATERIAL	QUANTITY
INTERNATIONAL LABOUR OFFICE		PART	Metal Drum Scrap	1
		LICENCE	SCALE	SHEET
	OHO e.V.	CC-BY-SA 4.0	1:10	10 /17

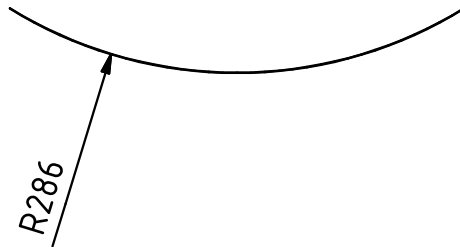
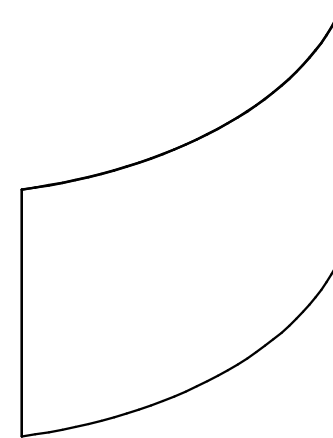
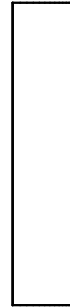
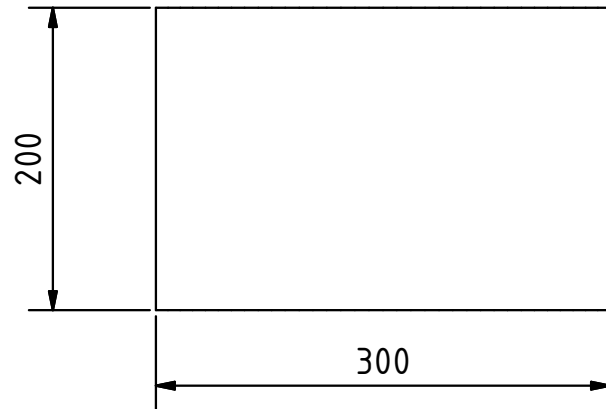
PLAN (1 : 2)



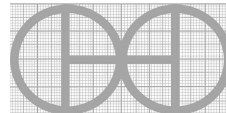
Note: all units are in mm

PROJECT		CREATED BY	APPROVED BY	DATE	VERSION
Drum Fish Dryer-Smoker		J. Zeron	A. Morillo	08-06-2021	1.0
PART NAME		FILE NAME			PART CODE
Upper Nozzle		Upper Nozzle.ipt			9
DEVELOPED BY		REDESIGNED BY		DOC. TYPE	MATERIAL
INTERNATIONAL LABOUR OFFICE				PART	Metal Drum Scrap
				LICENCE	SCALE
		OHO e.V.		CC-BY-SA 4.0	11 / 17

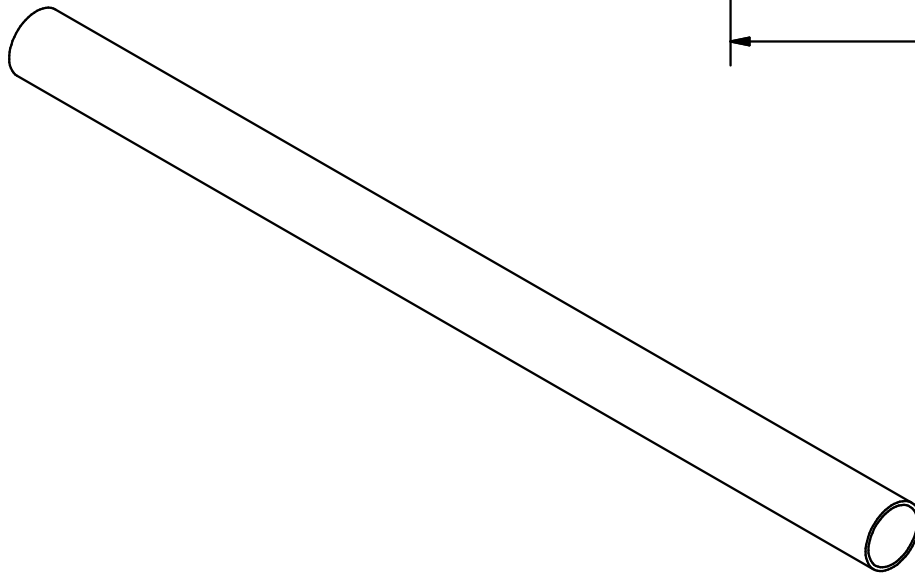
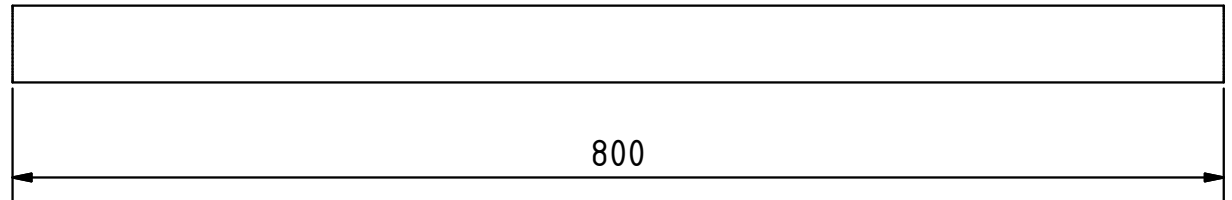
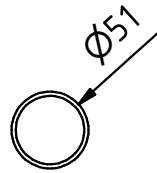
ELEVATION (1 : 5)



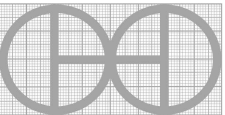
Note: all units are in mm

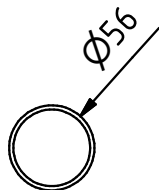
PROJECT		CREATED BY	APPROVED BY	DATE	VERSION
Drum Fish Dryer-Smoker		J. Zeron	A. Morillo	08-06-2021	1.0
PART NAME		FILE NAME			PART CODE
Side Entrance		Side Entrance.ipt			10
DEVELOPED BY	REDESIGNED BY		DOC. TYPE	MATERIAL	QUANTITY
INTERNATIONAL LABOUR OFFICE	 OHO e.V.		PART	Metal Drum Scrap	1
			LICENCE	SCALE	SHEET
			CC-BY-SA 4.0	1:5	12 /17

ELEVATION (1 : 5)

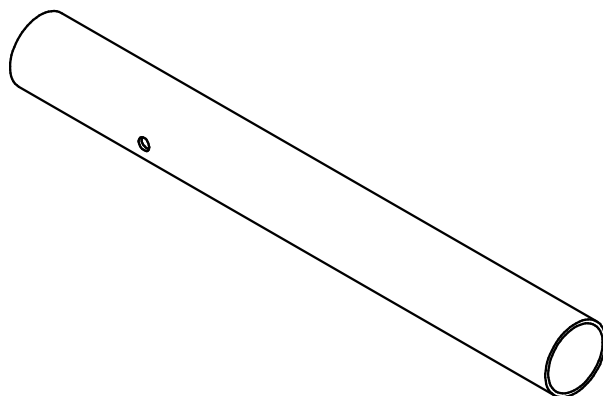
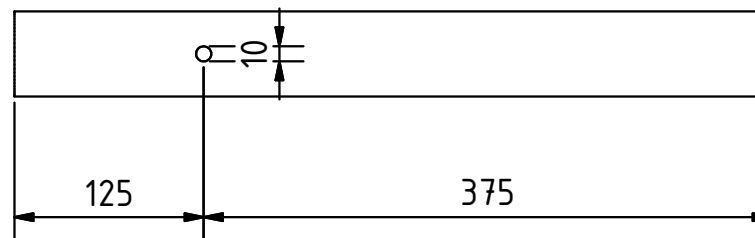


Note: all units are in mm

PROJECT		CREATED BY		APPROVED BY		DATE		VERSION	
Drum Fish Dryer-Smoker		J. Zeron		A. Morillo		08-06-2021		1.0	
PART NAME		FILE NAME						PART CODE	
Tube A		Tube A.ipt						11	
DEVELOPED BY		REDESIGNED BY		DOC. TYPE		MATERIAL		QUANTITY	
INTERNATIONAL LABOUR OFFICE				PART		Black Iron		1	
				LICENCE		SCALE		SHEET	
				CC-BY-SA 4.0		1:5		13 /17	
		OHO e.V.							



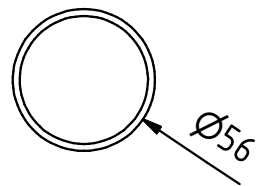
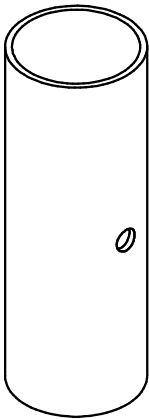
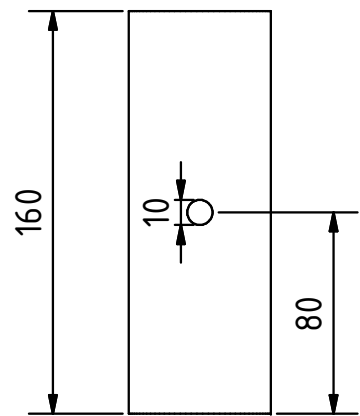
ELEVATION (1 : 5)



Note: all units are in mm

PROJECT	CREATED BY	APPROVED BY	DATE	VERSION
Drum Fish Dryer-Smoker	J. Zeron	A. Morillo	08-06-2021	1.0
PART NAME	FILE NAME	PART CODE		
Tube B	Tube B.ipt	12		
DEVELOPED BY	REDESIGNED BY	DOC. TYPE	MATERIAL	QUANTITY
INTERNATIONAL LABOUR OFFICE		PART	Black Iron	1
		LICENCE	SCALE	SHEET
	OHO e.V.	CC-BY-SA 4.0	1:5	14 /17

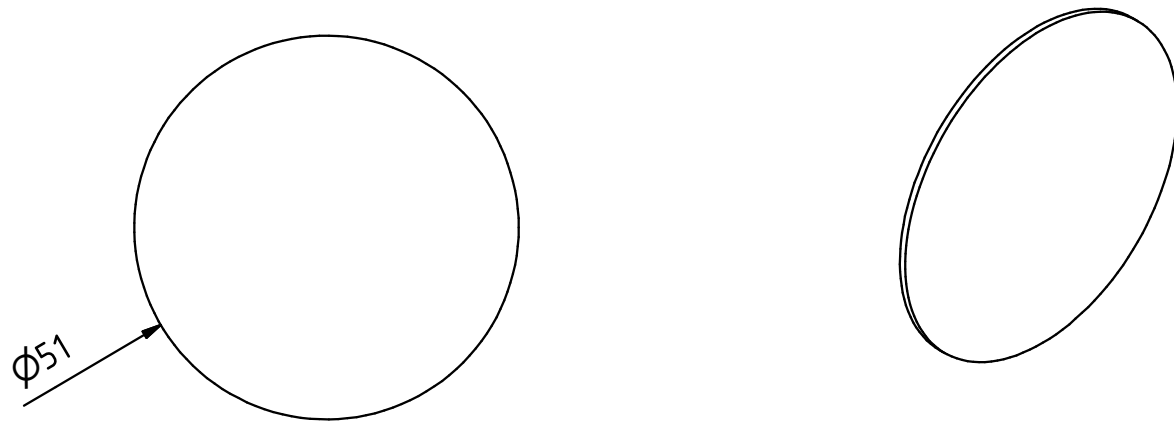
ELEVATION (1 : 3)



Note: all units are in mm

PROJECT		CREATED BY		APPROVED BY	DATE	VERSION
Drum Fish Dryer-Smoker		J. Zeron		A. Morillo	08-06-2021	1.0
PART NAME		FILE NAME				PART CODE
Exhaust Tube		Exhaust Tube.ipt				13
DEVELOPED BY		REDESIGNED BY		DOC. TYPE	MATERIAL	QUANTITY
INTERNATIONAL LABOUR OFFICE				PART	Black Iron	1
				LICENCE	SCALE	SHEET
		OHO e.V.		CC-BY-SA 4.0	1:3	15 /17

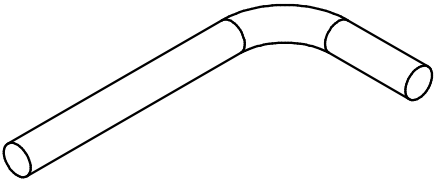
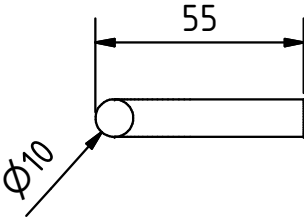
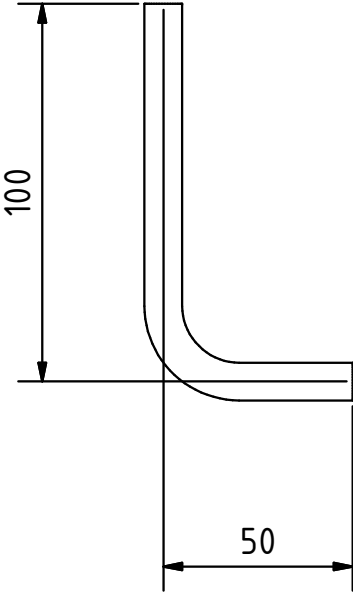
PLAN (1 : 1)



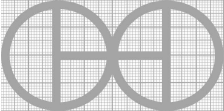
Note: all units are in mm

PROJECT	CREATED BY	APPROVED BY	DATE	VERSION
Drum Fish Dryer-Smoker	J. Zeron	A. Morillo	08-06-2021	1.0
PART NAME	FILE NAME			PART CODE
Nozzle	Nozzle.ipt			14
DEVELOPED BY	REDESIGNED BY	DOC. TYPE	MATERIAL	QUANTITY
INTERNATIONAL LABOUR OFFICE		PART	Sheet metal	2
		LICENCE	SCALE	SHEET
	OHO e.V.	CC-BY-SA 4.0	1:1	16 /17

PLAN (1 : 2)



Note: all units are in mm

PROJECT		CREATED BY		APPROVED BY	DATE	VERSION
Drum Fish Dryer-Smoker		J. Zeron		A. Morillo	08-06-2021	1.0
PART NAME		FILE NAME				PART CODE
Bar		Bar.ipt				15
DEVELOPED BY		REDESIGNED BY		DOC. TYPE	MATERIAL	QUANTITY
INTERNATIONAL LABOUR OFFICE				PART	Flat bar	2
				LICENCE	SCALE	SHEET
		OHO e.V.		CC-BY-SA 4.0	1:2	17 /17